

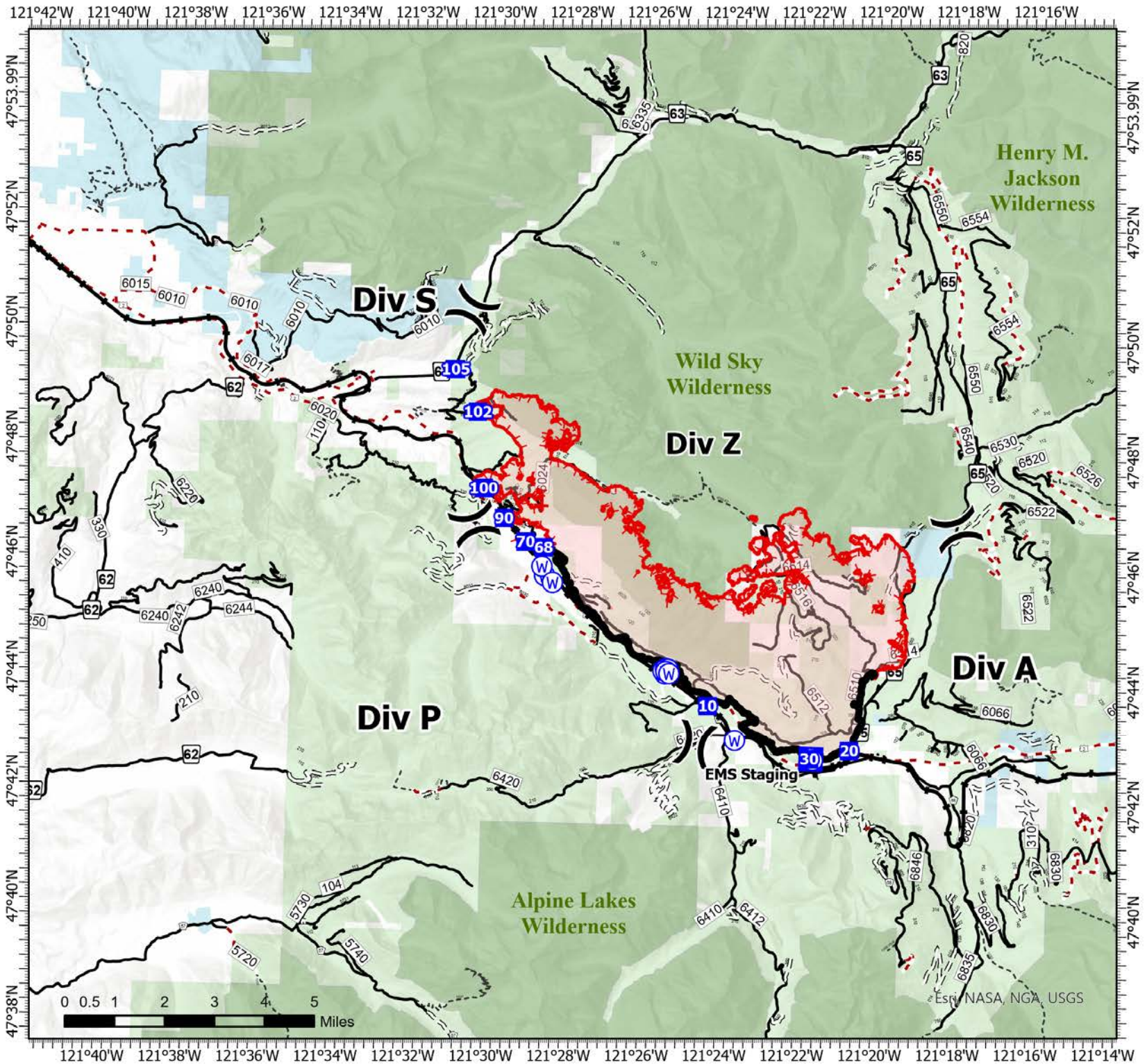
IAP

Bolt Creek

WA-NWS-000150

10/21/2022

14,820 acres at 10/19/2022 @1837



- (X) Division Break
- ⊕ Medical
- Drop Point
- ⊙ Water Source
- ▬ Contained
- ▬ Uncontained
- Bureau of Land Management (BLM)
- State
- US Forest Service (USFS)
- Private
- Undetermined
- ⚡ Railroads
- ▬ Open Roads
- ▬▬ Closed Roads
- ▬▬ Decommissioned Roads
- ▬▬ Decommissioned Roads
- ⋯ Trail
- Wilderness

SE WASHINGTON
 ALL HAZARDS
TYPE 3
 INTER-AGENCY TEAM



Map updated:
 10/20/2022 1819

