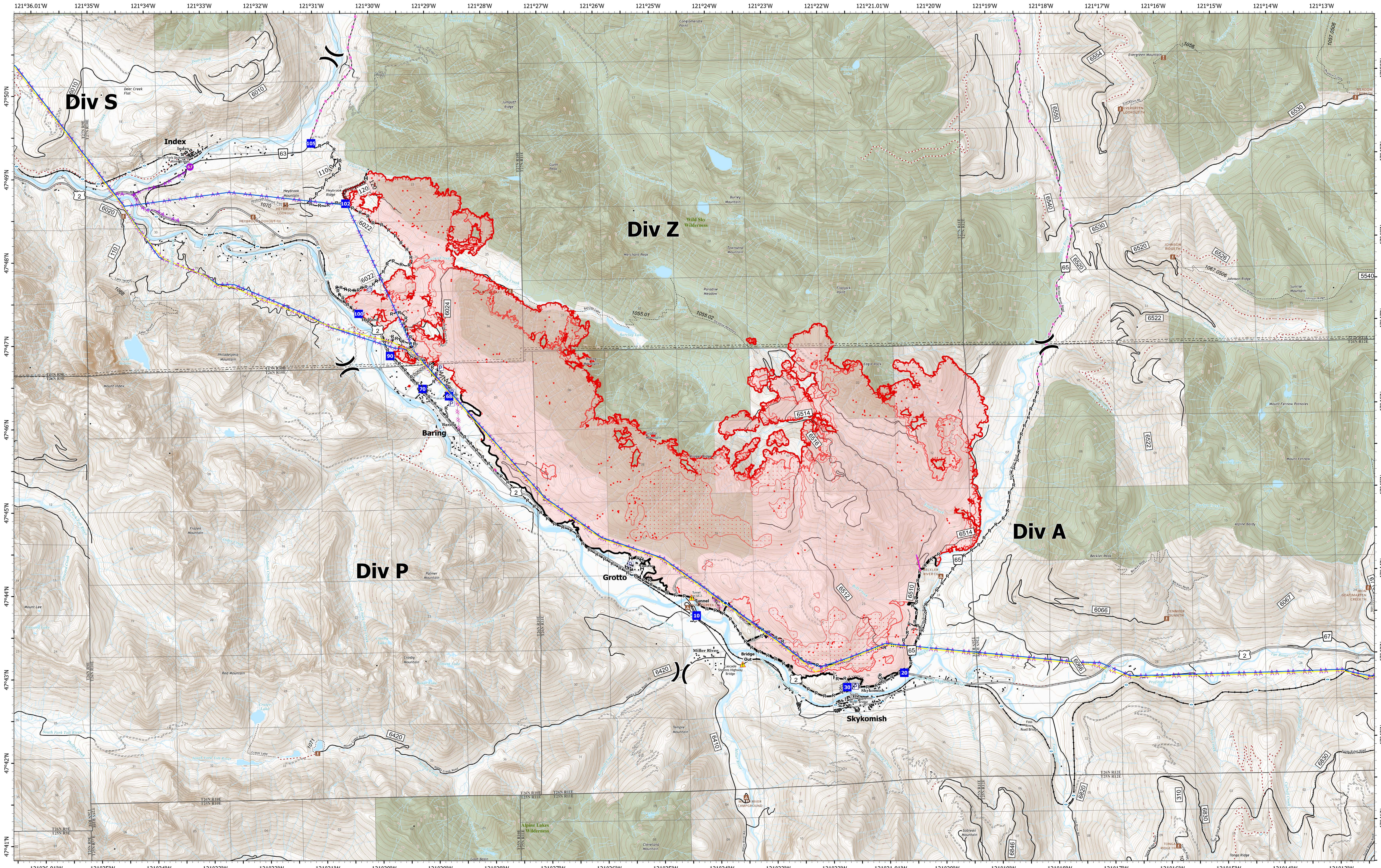


Operations



Bolt Creek
WA-NWS-000150
10/21/2022

14,820 acres at 10/19/2022 @1837

10/20/2022 1854

- | |
|---|
| <ul style="list-style-type: none"> ● IR Isolated Heat Source ● Possible IR Heat Source ▭ IR Heat Perimeter ▭ IR Intense Heat ▭ IR Scattered Heat ▭ Other Property ⊠ Pump ⊠ Water Tank ⊠ Division Break ● Helispot ● Drop Point ▲ Hazard ▲ 345kv High Voltage ▲ 345kv High Voltage ⊠ Completed Burnout ⊠ Completed Dozer Line ⊠ Completed Fuel Break ⊠ Completed Hand Line — Completed Mixed Construction Line — Completed Plow Line — Completed Road as Line — Completed Dozer Line — Planned Dozer Line — Planned Road as Line — Access or Improved Road — Other — Aerial Hazard — Retardant Drop — Contained — Uncontained — Campground — Lookout/Cabin — Trailhead — Railroads — Major Highways — Forest Service Open Roads — Forest Service Closed Roads — Forest Service Decommissioned Roads — Bridges — Railroads — Wilderness — Bureau of Indian Affairs (BIA) — Bureau of Land Management (BLM) — Bureau of Reclamation (BOR) — Department of Defense (DOD) — Local Government — National Park Service (NPS) — Other Federal — State — US Fish and Wildlife Service (USFWS) — US Forest Service (USFS) — Private |
|---|

