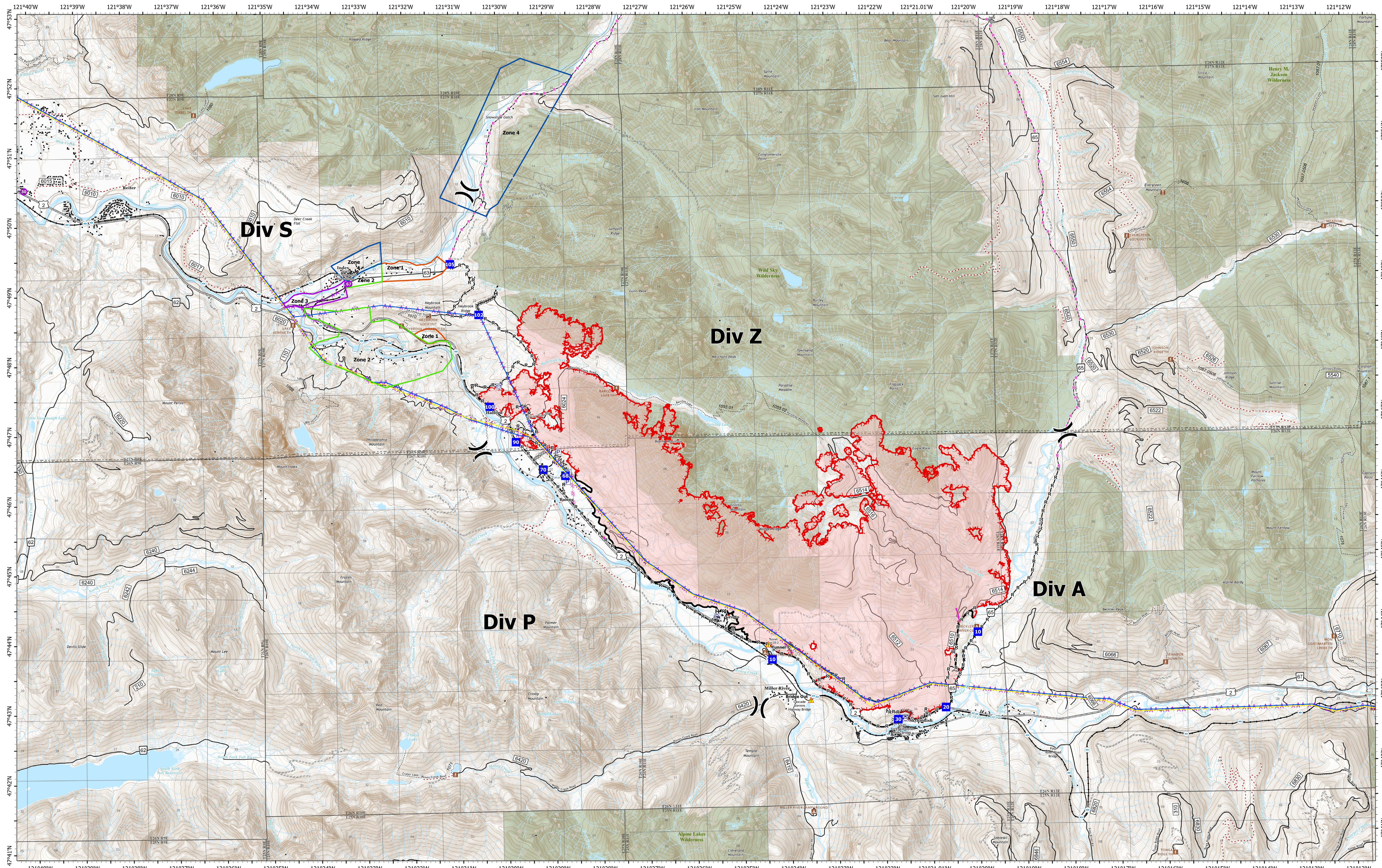


Structure Protection Plan



Bolt Creek
WA-NWS-000150
10/15/2022

13,958 acres at 10/13/2022 @1958

10/14/2022 2002

- | | | | |
|--|--|---|--|
| <ul style="list-style-type: none"> ▬ Structure Protection Zone 1 ▬ Structure Protection Zone 2 ▬ Structure Protection Zone 3 ▬ Structure Protection Zone 4 ⊠ Pump ⊠ Water Tank X Division Break ● Helispot ▲ Drop Point ▲ Hazard — 345kv High Voltage — 345kv High Voltage — Completed Burnout — Completed Dozer Line — Completed Dozer Line | <ul style="list-style-type: none"> — Completed Fuel Break — Completed Hand Line — Completed Mixed Construction Line — Trailhead — Completed Plow Line — Completed Road as Line — Planned Dozer Line — Planned Road as Line — Other — Aerial Hazard — Retardant Drop — Contained — Uncontained — Bridges — Campground | <ul style="list-style-type: none"> ⊠ Day Use/Picnic ⊠ Lookout/Cabin — Trailhead — Railroads — Major Highways — Forest Service Open Roads — Forest Service Closed Roads — Forest Service Decommissioned Roads — Bridges — Railroads — county — Wilderness — Bureau of Indian Affairs (BIA) — Bureau of Land Management (BLM) | <ul style="list-style-type: none"> — Bureau of Reclamation (BOR) — Department of Defense (DOD) — Local Government — National Park Service (NPS) — Other Federal — State — US Fish and Wildlife Service (USFWS) — US Forest Service (USFS) — Private |
|--|--|---|--|

