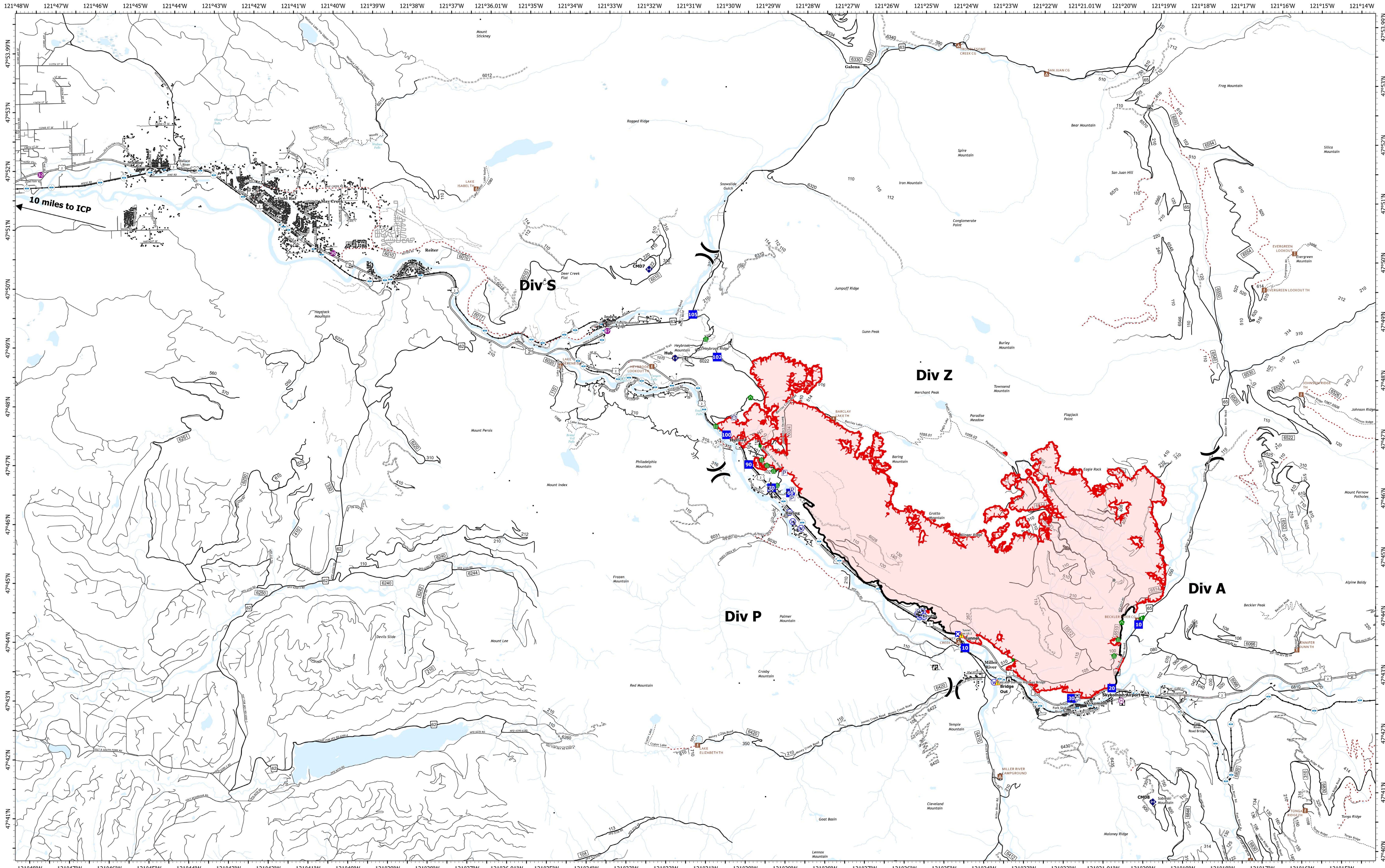


Transportation

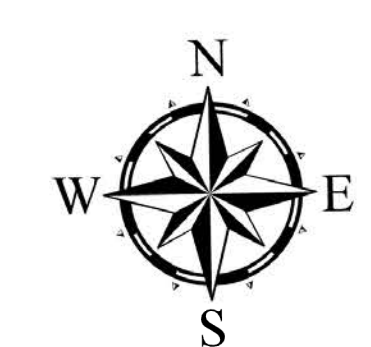


Bolt Creek
WA-NWS-000150
10/14/2022

13,826 acres at 10/12/2022 @2000

10/13/2022 2203

- | | | | | | | |
|----------------|--------------|-------------------|---------------|--------------|----------------------|----------------------|
| Pump | Drop Point | Stream Crossing | Tunnel | 4WD | Bridges | Decommissioned Roads |
| Water Tank | Closure | Road Repair | Water Source | Trail | Railroads | Trail |
| Helispot | Lookout | Resource Location | Campground | Open Roads | Runway | Major Highways |
| Other | Repair Point | Contained | LOOKOUT/CABIN | Closed Roads | Decommissioned Roads | |
| Division Break | Fire Station | Culvert | Secondary Hwy | TRAILHEAD | | |
| Medical | Bridge | Repeater | Local Road | | | |



SE WASHINGTON
ALL HAZARDS
TYPE 3
 INTER-AGENCY TEAM

