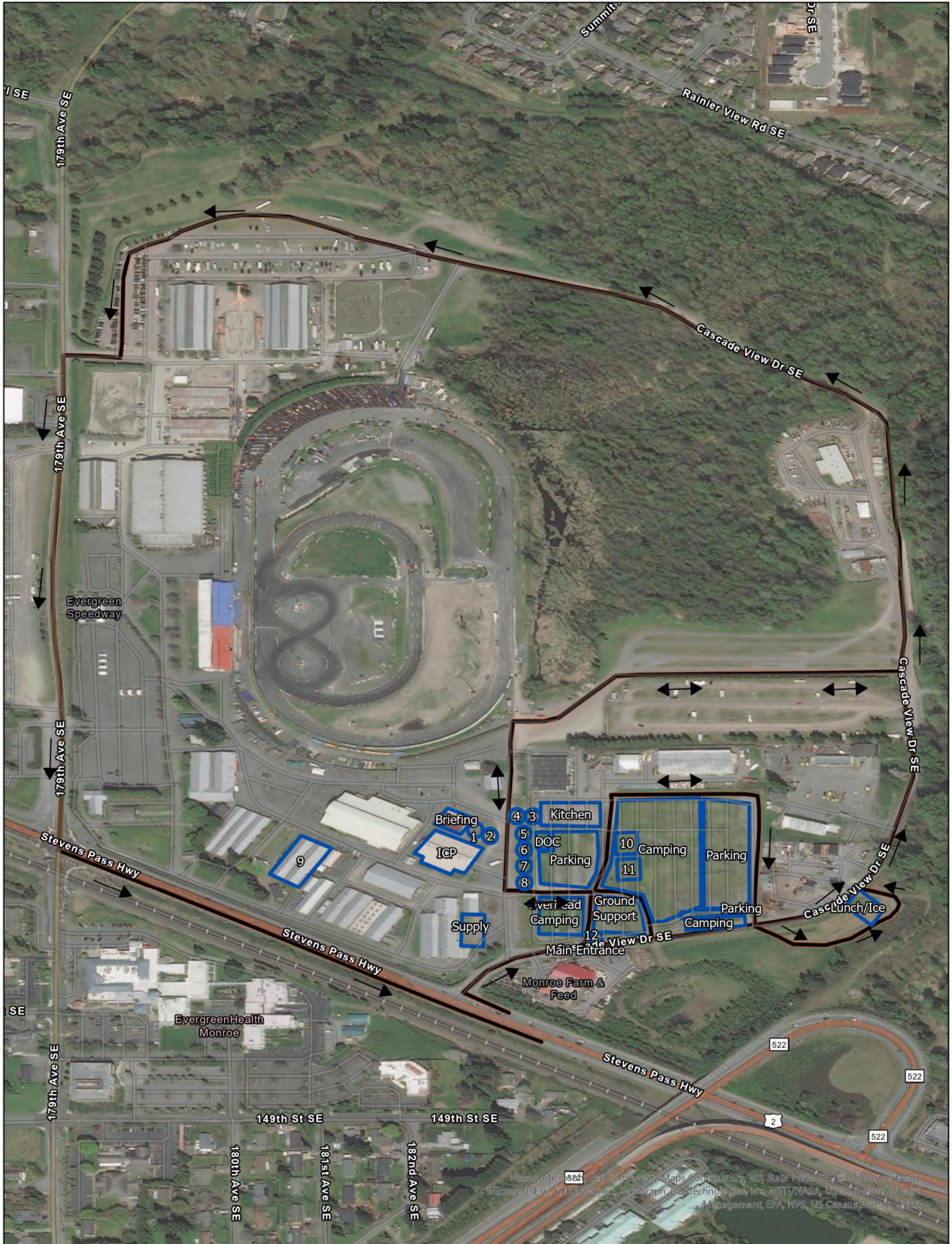


Base Camp Locations



Bolt Creek WA-NWS-000150

09/15/2022

Layer

- | | |
|--------------------|------------------|
| 1 - Communications | 7 - Facilities |
| 2 - Communications | 8 - Camp Crew |
| 3 - Medical | 9 - Day Sleeping |
| 4 - Medical | 10 - Laundry |
| 5 - Ops | 11 - Showers |
| 6 - Safety | 12 - Security |

