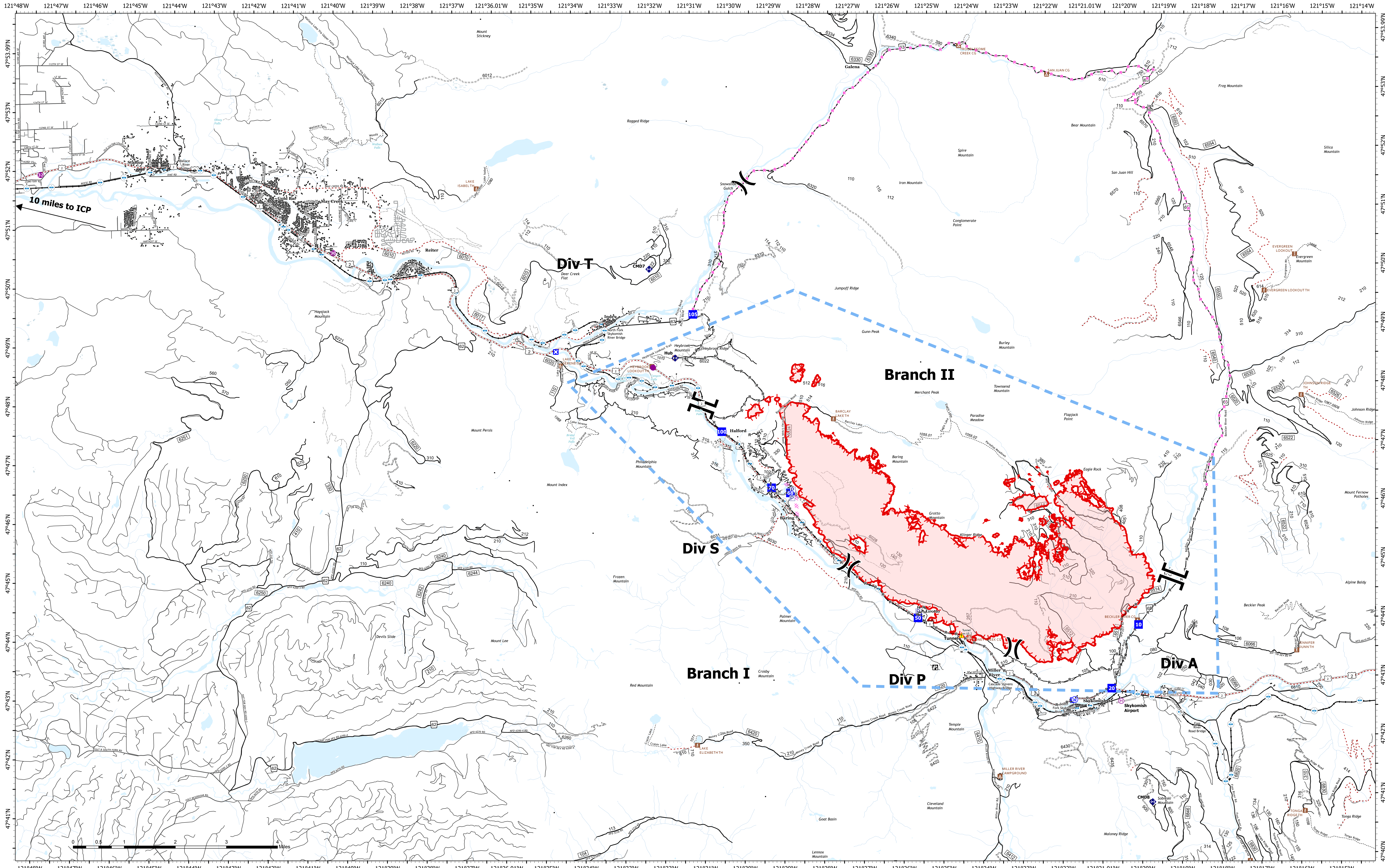


Transportation



Bolt Creek
WA-NWS-000150
09/17/2022

9,440 acres at 09/12/2022 @2041

9/16/2022 2034

- | | | | | | | |
|----------------|-------------------|------------------------|------------------------------|---------------|----------------------|--------|
| Pump | Closure | Completed Dozer Line | Other | Trail | Railroads | Runway |
| Helispot | Lookout | Completed Fuel Break | Temporary Flight Restriction | Campground | Open Roads | |
| Helibase | Repeater | Completed Hand Line | Uncontained | LOOKOUT/CABIN | Closed Roads | |
| Division Break | Tunnel | Completed Road as Line | Secondary Hwy | TRAILHEAD | Decommissioned Roads | |
| Branch Break | Water Source | Planned Dozer Line | Local Road | Bridges | Decommissioned Roads | |
| Drop Point | Completed Burnout | Planned Road as Line | 4WD | Trail | | |

