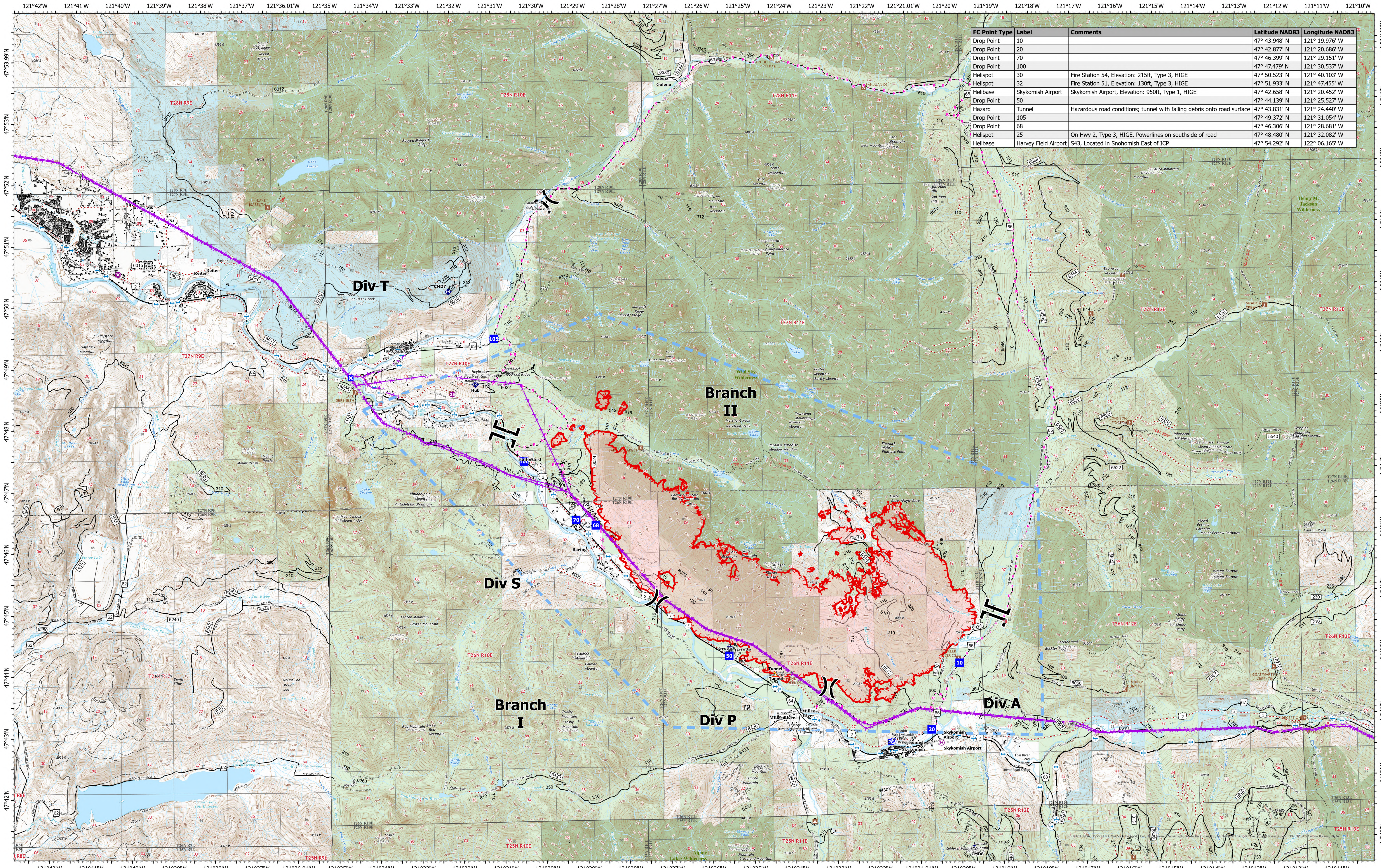


Communications



FC Point Type	Label	Comments	Latitude NAD83	Longitude NAD83
Drop Point	10		47° 43.948' N	121° 19.976' W
Drop Point	20		47° 42.877' N	121° 20.686' W
Drop Point	70		47° 46.399' N	121° 29.151' W
Drop Point	100		47° 47.479' N	121° 30.537' W
Helispot	30	Fire Station 54, Elevation: 215ft, Type 3, HIGE	47° 50.523' N	121° 40.103' W
Helispot	32	Fire Station 51, Elevation: 130ft, Type 3, HIGE	47° 51.933' N	121° 47.455' W
Helibase	Skykomish Airport	Skykomish Airport, Elevation: 950ft, Type 1, HIGE	47° 42.658' N	121° 20.452' W
Drop Point	50		47° 44.139' N	121° 25.527' W
Hazard	Tunnel	Hazardous road conditions; tunnel with falling debris onto road surface	47° 43.831' N	121° 24.440' W
Drop Point	105		47° 49.372' N	121° 31.054' W
Drop Point	68		47° 46.306' N	121° 28.681' W
Helispot	25	On Hwy 2, Type 3, HIGE, Powerlines on southside of road	47° 48.480' N	121° 32.082' W
Helibase	Harvey Field Airport	S43, Located in Snohomish East of ICP	47° 54.292' N	122° 06.165' W

Bolt Creek
WA-NWS-000150
09/16/2022

9,440 acres at 09/12/2022 @2041
 9/15/2022 2129

- P Pump
 - Helispot
 - H Helibase
 - X Division Break
 - Drop Point
 - Closure
 - ◆ Lookout
 - ♦ Repeater
 - ▲ Hazard
 - Water Source
 - ⊗ Completed Dozer Line
- M Completed Fuel Break
 - Completed Hand Line
 - R Completed Road as Line
 - Planned Dozer Line
 - Planned Road as Line
 - Other
 - Aerial Hazard
 - Temporary Flight Restriction
 - Uncountained
 - Campground
 - Day Use/Picnic
 - Lookout/Cabin
- Trailhead
 - Railroads
 - Forest Service Open Roads
 - Forest Service Closed Roads
 - Forest Service Decommissioned Roads
 - Decommissioned Roads
 - Trail
 - county
 - Wilderness
 - Bureau of Land Management (BLM)
 - State
 - US Forest Service (USFS)
 - Private

