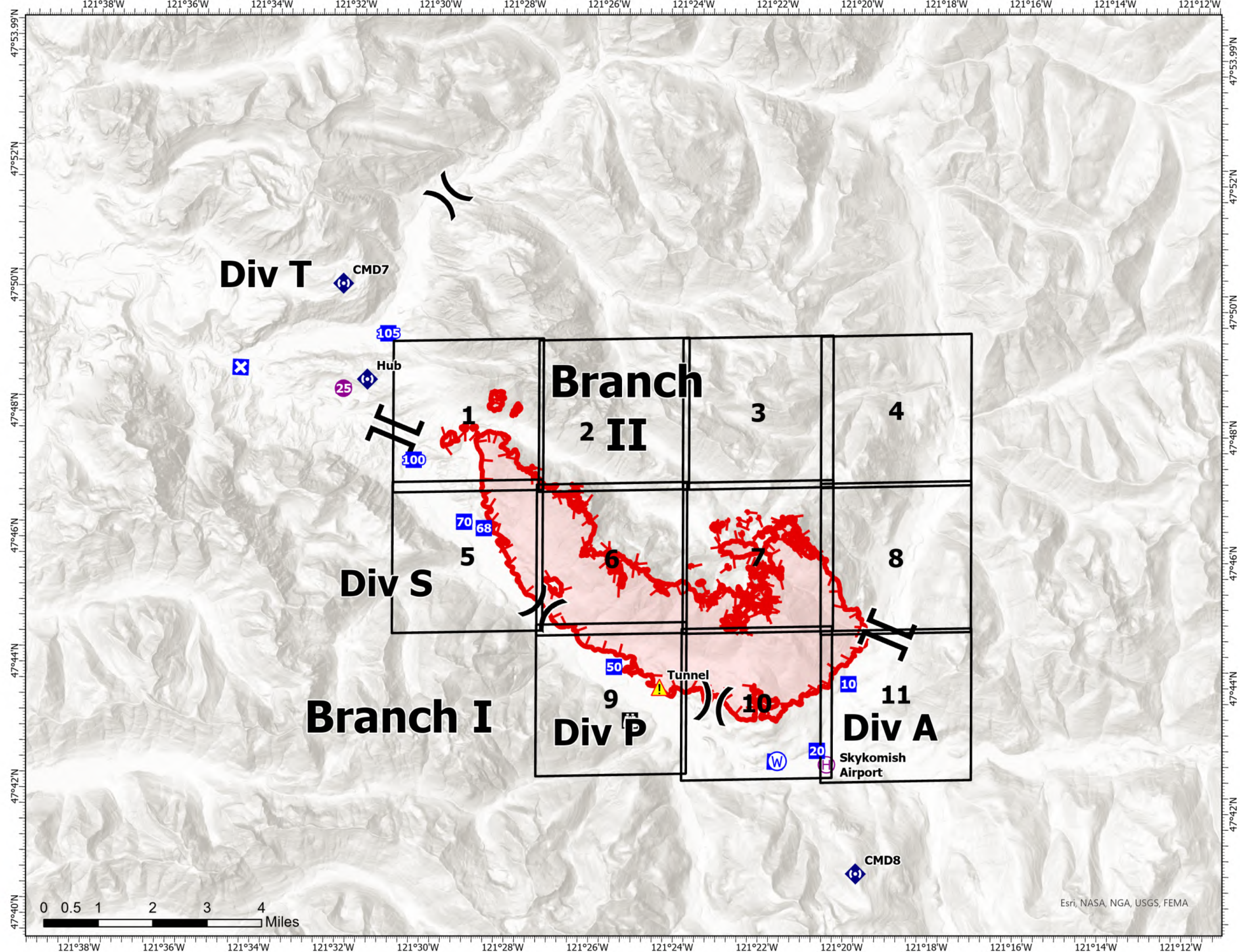


IAP
Bolt Creek
WA-NWS-000150
09/17/2022

9,440 acres at 09/12/2022 @2041

- Helispot
- H Helibase
-) Division Break
- | Branch Break
- 100 Drop Point
- X Closure
- ⚠ Lookout
- Ⓜ Repeater
- ⚠ Tunnel
- W Water Source
- Uncontained



Map updated:
9/16/2022 2040



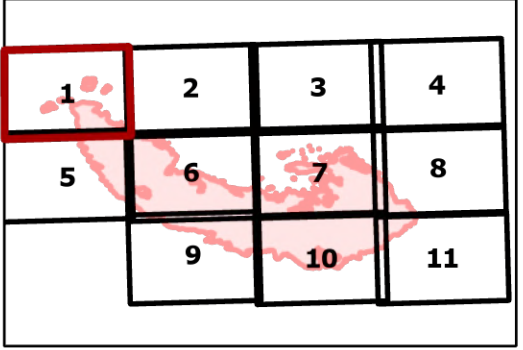
IAP

Bolt Creek

WA-NWS-000150

09/17/2022

9,440 acres at 09/12/2022 @2041

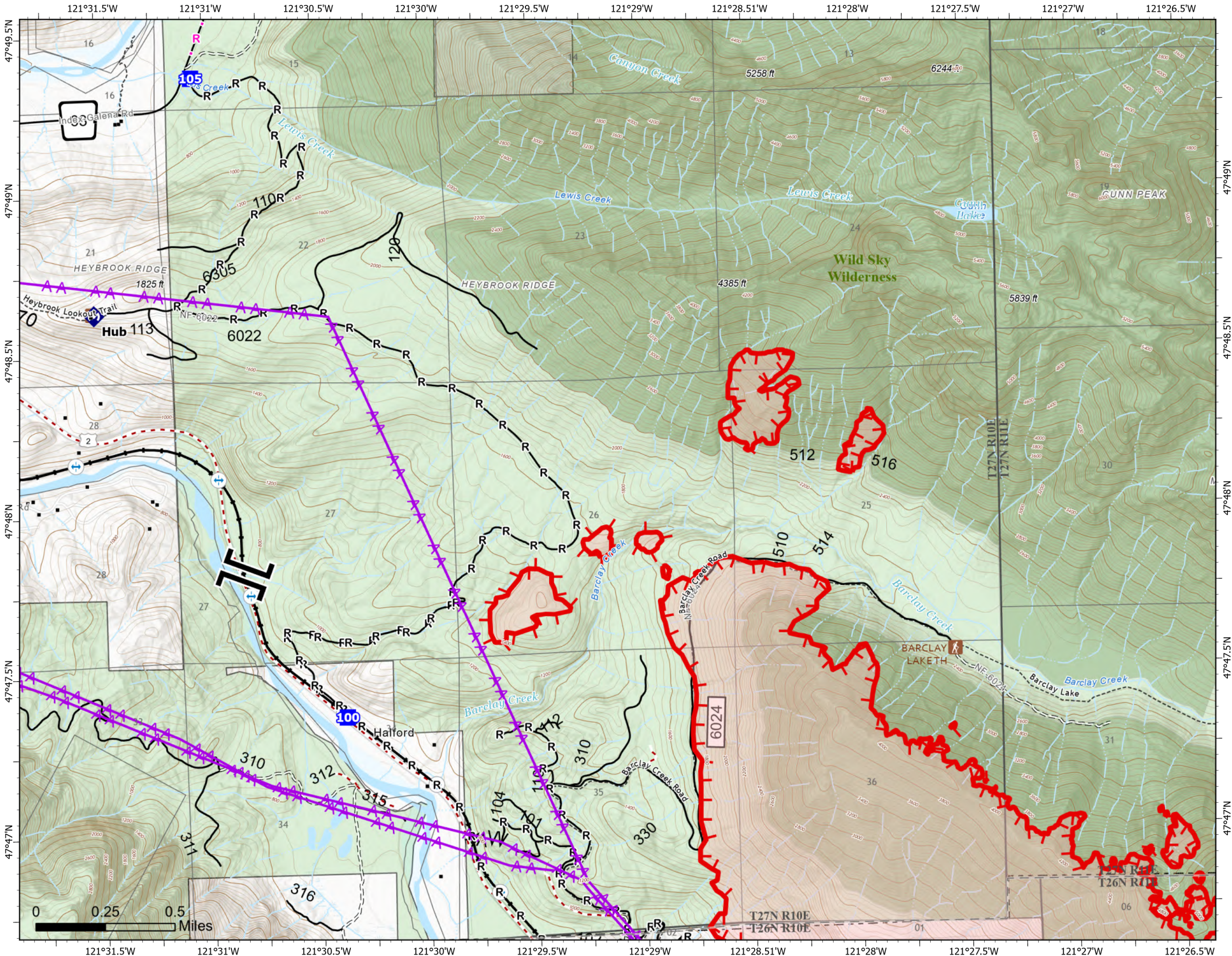


Page 1 of 11

- Branch Break
- Drop Point
- Repeater
- structures
- Completed Dozer Line
- Completed Fuel Break
- Completed Road as Line
- Planned Road as Line
- Aerial Hazard
- Uncontained
- Trail
- US Forest Service (USFS)
- Private
- Undetermined
- LOOKOUT/CABIN
- TRAILHEAD
- Bridges
- Railroads
- Open Roads
- Closed Roads
- Decommissioned Roads
- Decommissioned Roads
- Trail
- county
- Wilderness



Map updated:
9/16/2022 2053



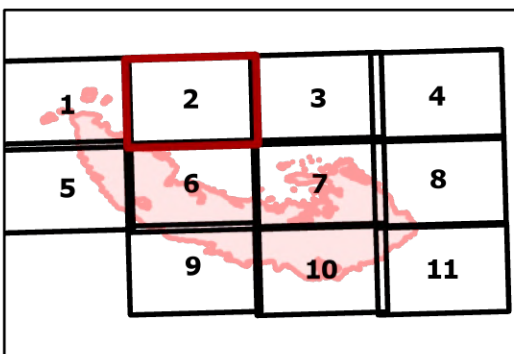
IAP

Bolt Creek











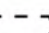

WA-NWS-000150

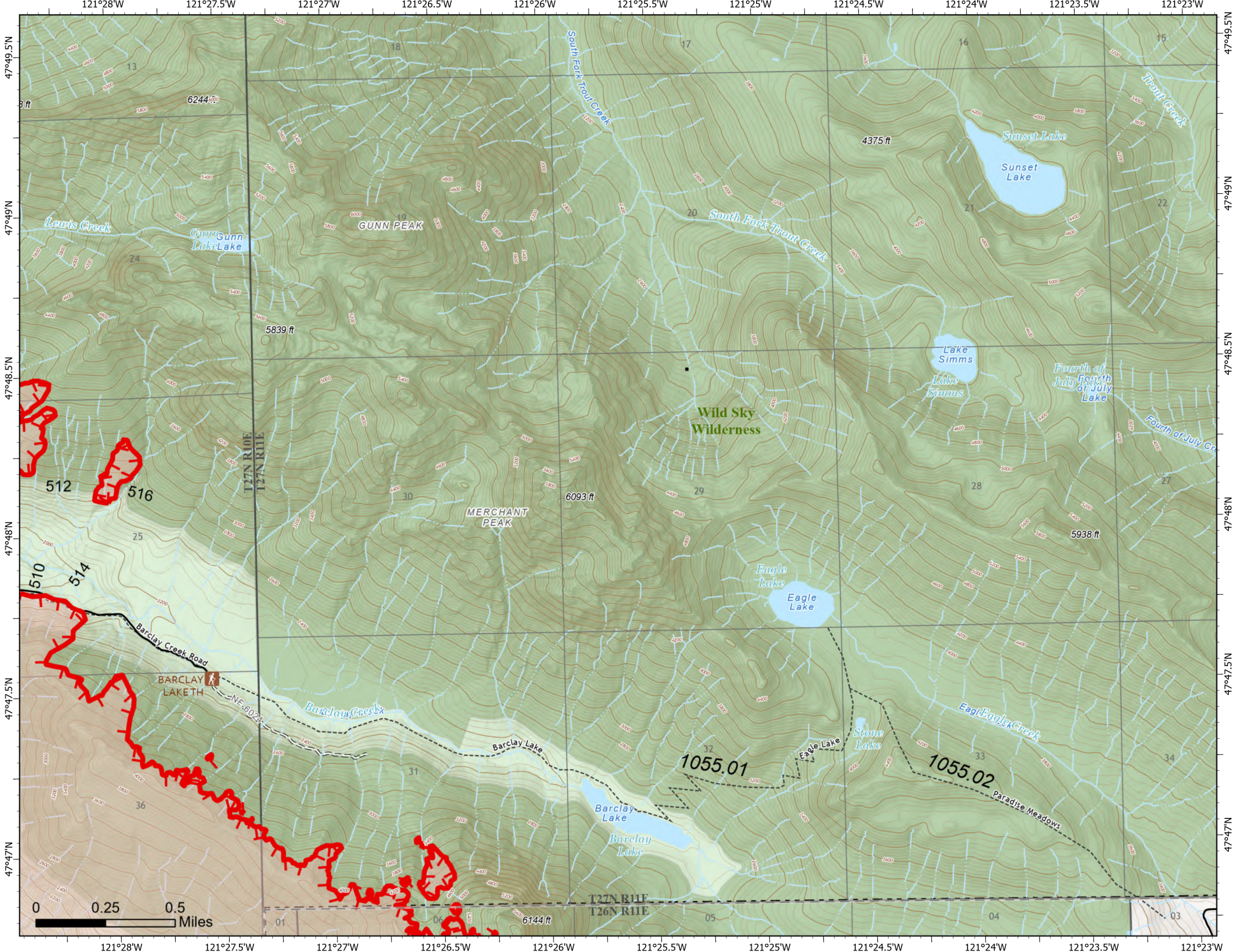
09/17/2022

9,440 acres at 09/12/2022 @2041



Page 2 of 11

-  structures
-  Label Point
-  Uncontained
-  Trail
-  US Forest Service (USFS)
-  Private
-  TRAILHEAD
-  Open Roads
-  Closed Roads
-  Trail
-  county
-  Wilderness



Map updated:
9/16/2022 2053



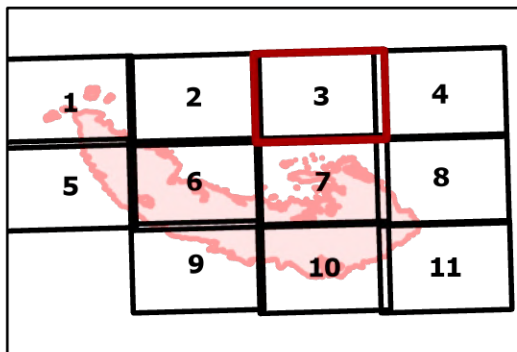
IAP

Bolt Creek



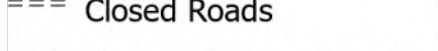
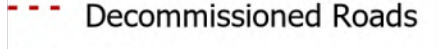
WA-NWS-000150

09/17/2022

9,440 acres at 09/12/2022 @2041

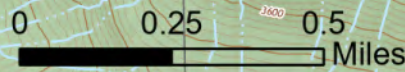


Page 3 of 11

-  Trail
-  US Forest Service (USFS)
-  Private
-  Open Roads
-  Closed Roads
-  Decommissioned Roads
-  Trail
-  county
-  Wilderness



Map updated:
9/16/2022 2054



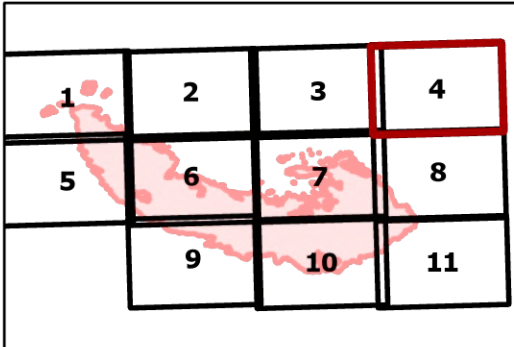
IAP

Bolt Creek

WA-NWS-000150

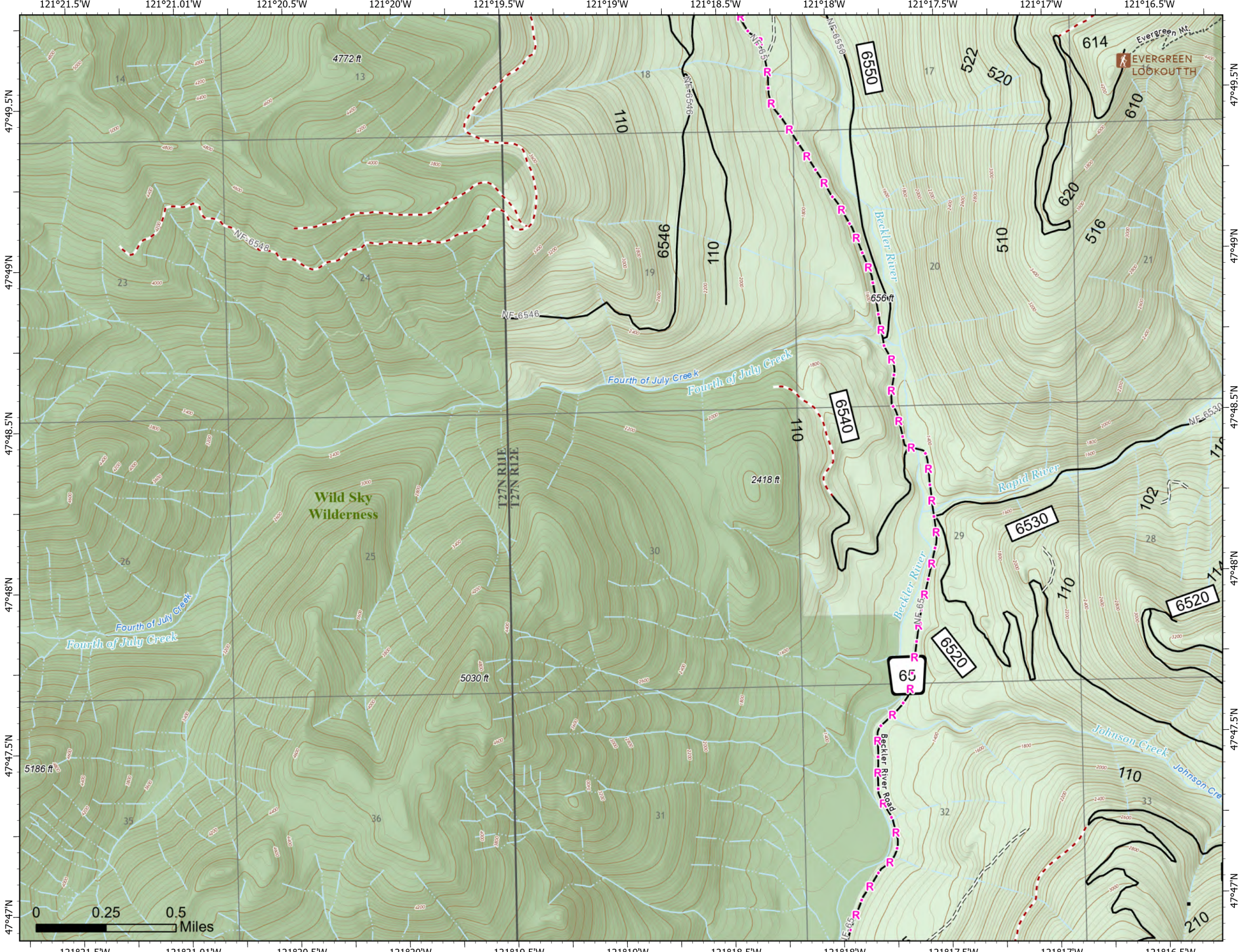
09/17/2022

9,440 acres at 09/12/2022 @2041

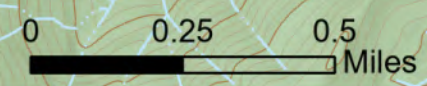


Page 4 of 11

- structures
- Planned Road as Line
- Trail
- US Forest Service (USFS)
- TRAILHEAD
- Open Roads
- Closed Roads
- Decommissioned Roads
- Trail
- county
- Wilderness



Map updated:
9/16/2022 2054



IAP

Bolt Creek

WA-NWS-000150

09/17/2022

9,440 acres at 09/12/2022 @2041

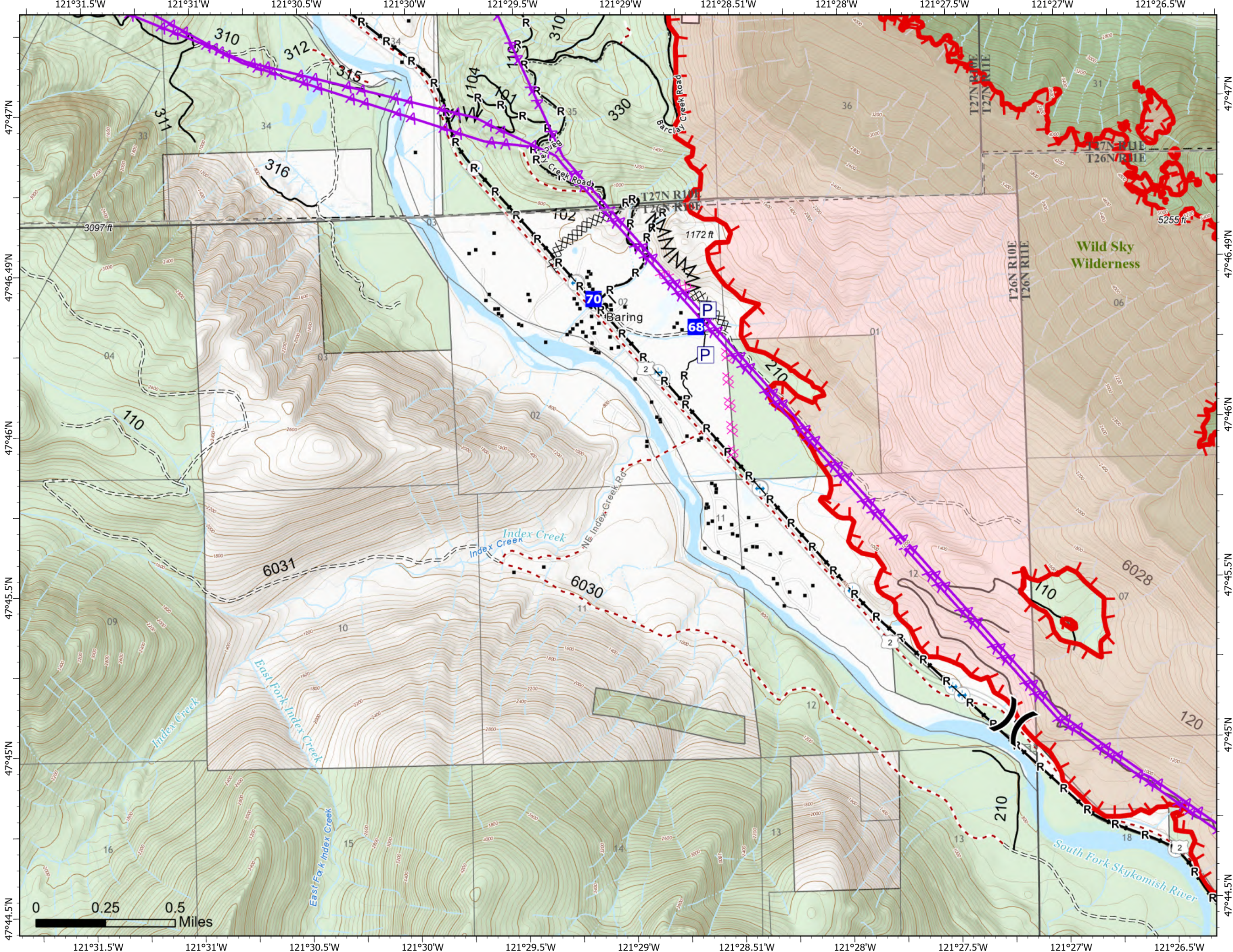
1	2	3	4
5	6	7	8
9	10		11

Page 5 of 11

- (X) Division Break
- Drop Point
- structures
- Label Point
- P Pump
- Completed Burnout
- ⊗ Completed Dozer Line
- M Completed Fuel Break
- R Completed Road as Line
- Planned Dozer Line
- ▲ Aerial Hazard
- Uncontained
- - - Trail
- US Forest Service (USFS)
- Private
- ⊕ Bridges
- Railroads
- Open Roads
- - - Closed Roads
- - - Decommissioned Roads
- - - Decommissioned Roads
- - - Trail
- - - county
- Wilderness



Map updated:
9/16/2022 2054



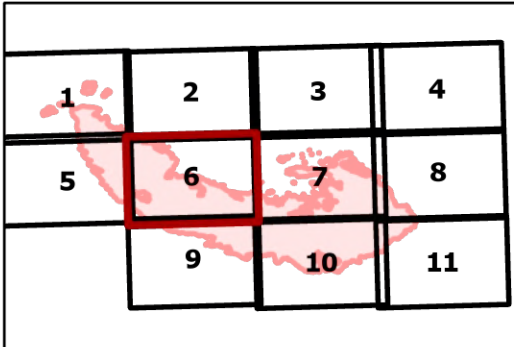
IAP

Bolt Creek

WA-NWS-000150

09/17/2022

9,440 acres at 09/12/2022 @2041

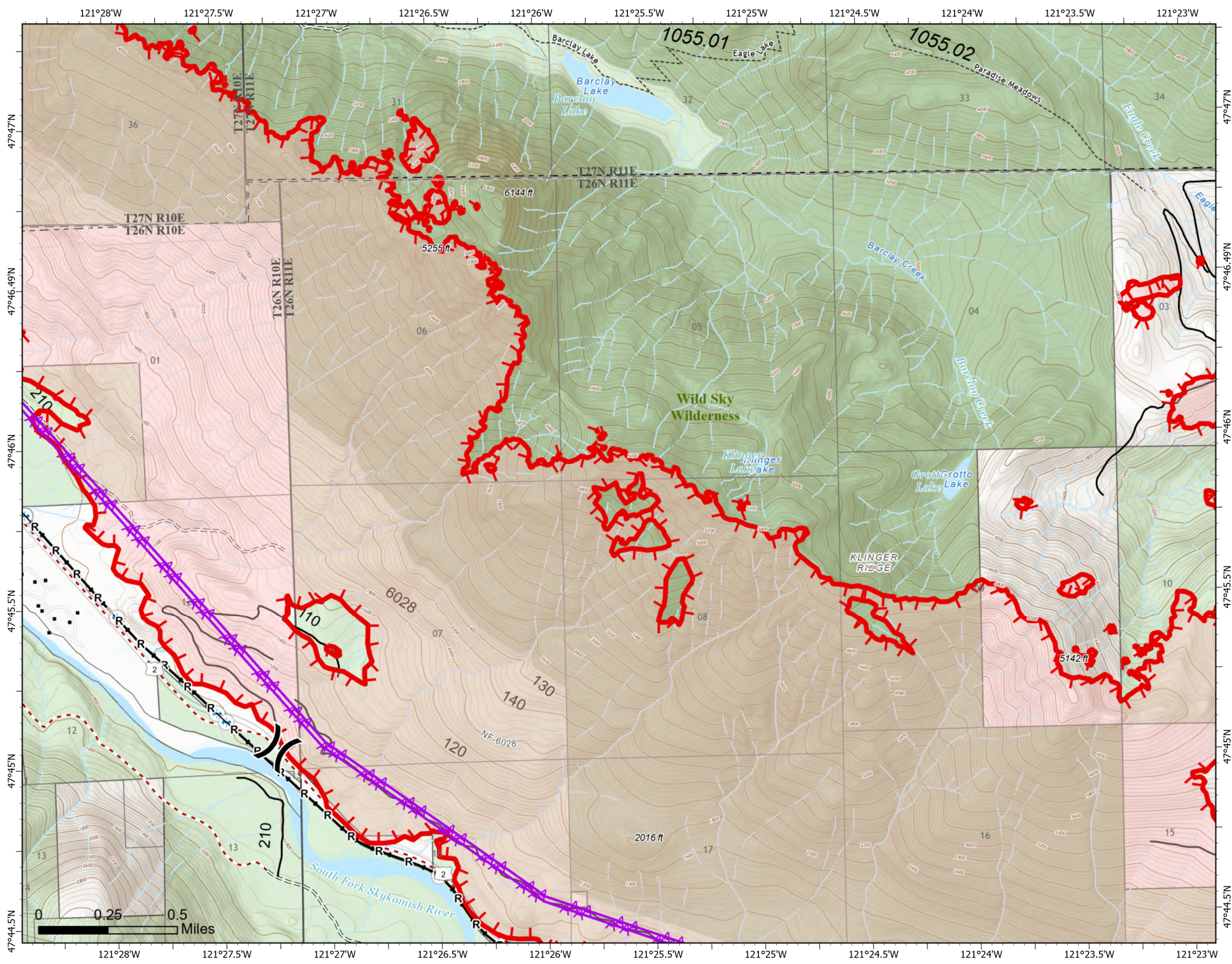


Page 6 of 11

- (X) Division Break
- structures
- R— Completed Road as Line
- ⚡ Aerial Hazard
- ▬ Uncontained
- - - Trail
- US Forest Service (USFS)
- Private
- ⚙ Bridges
- ⚓ Railroads
- Open Roads
- - - Closed Roads
- - - Decommissioned Roads
- - - Trail
- - - county
- Wilderness



Map updated:
9/16/2022 2055



IAP

Bolt Creek






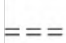

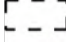


WA-NWS-000150

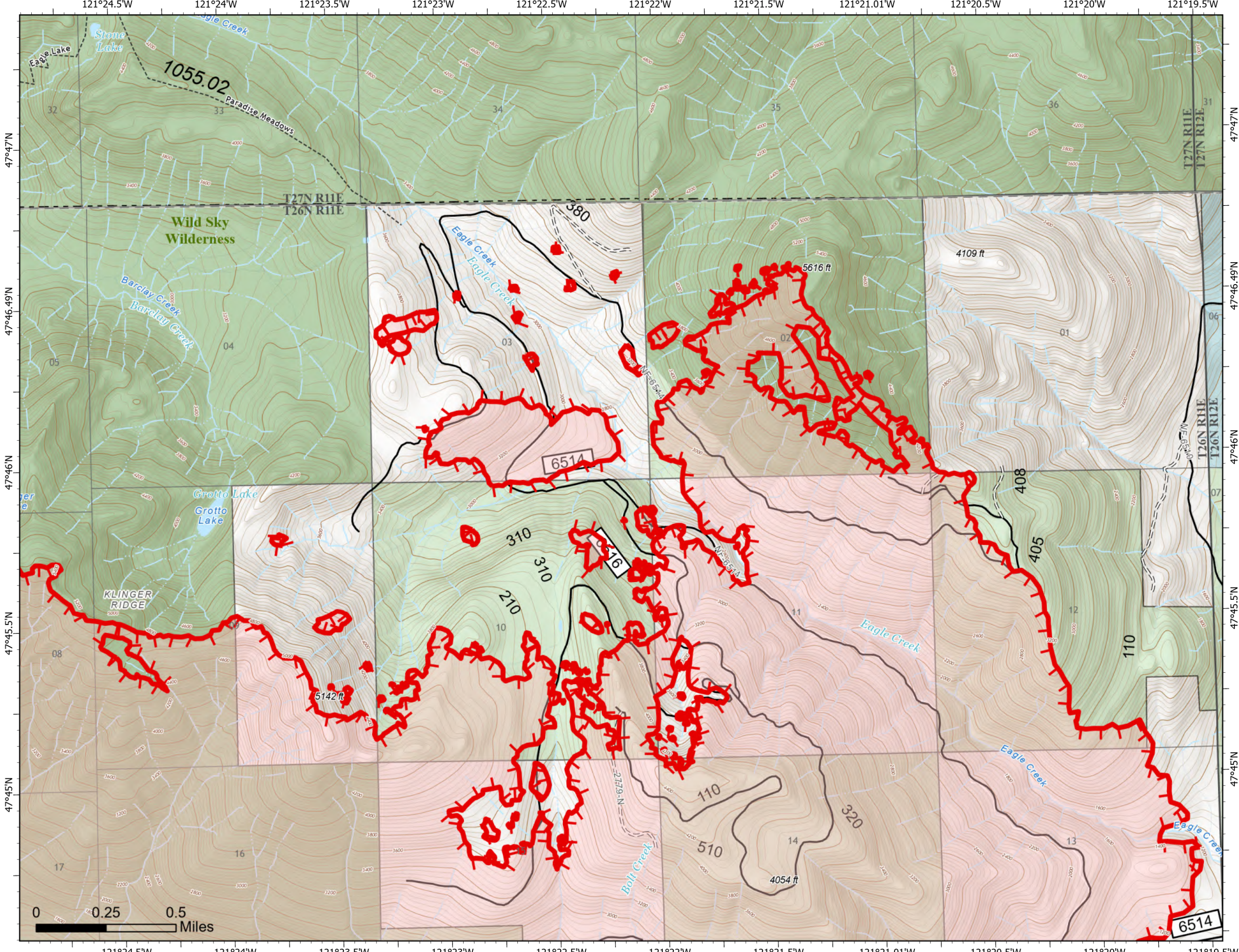
09/17/2022

9,440 acres at 09/12/2022 @2041

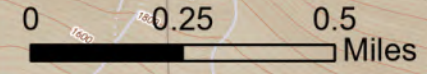
1	2	3	4
5	6	7	8
9	10	11	

Page 7 of 11

-  Uncontained
-  Trail
-  State
-  US Forest Service (USFS)
-  Private
-  Open Roads
-  Closed Roads
-  Trail
-  county
-  Wilderness



Map updated: 9/16/2022 2055



IAP

Bolt Creek

WA-NWS-000150

09/17/2022

9,440 acres at 09/12/2022 @2041

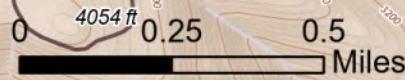
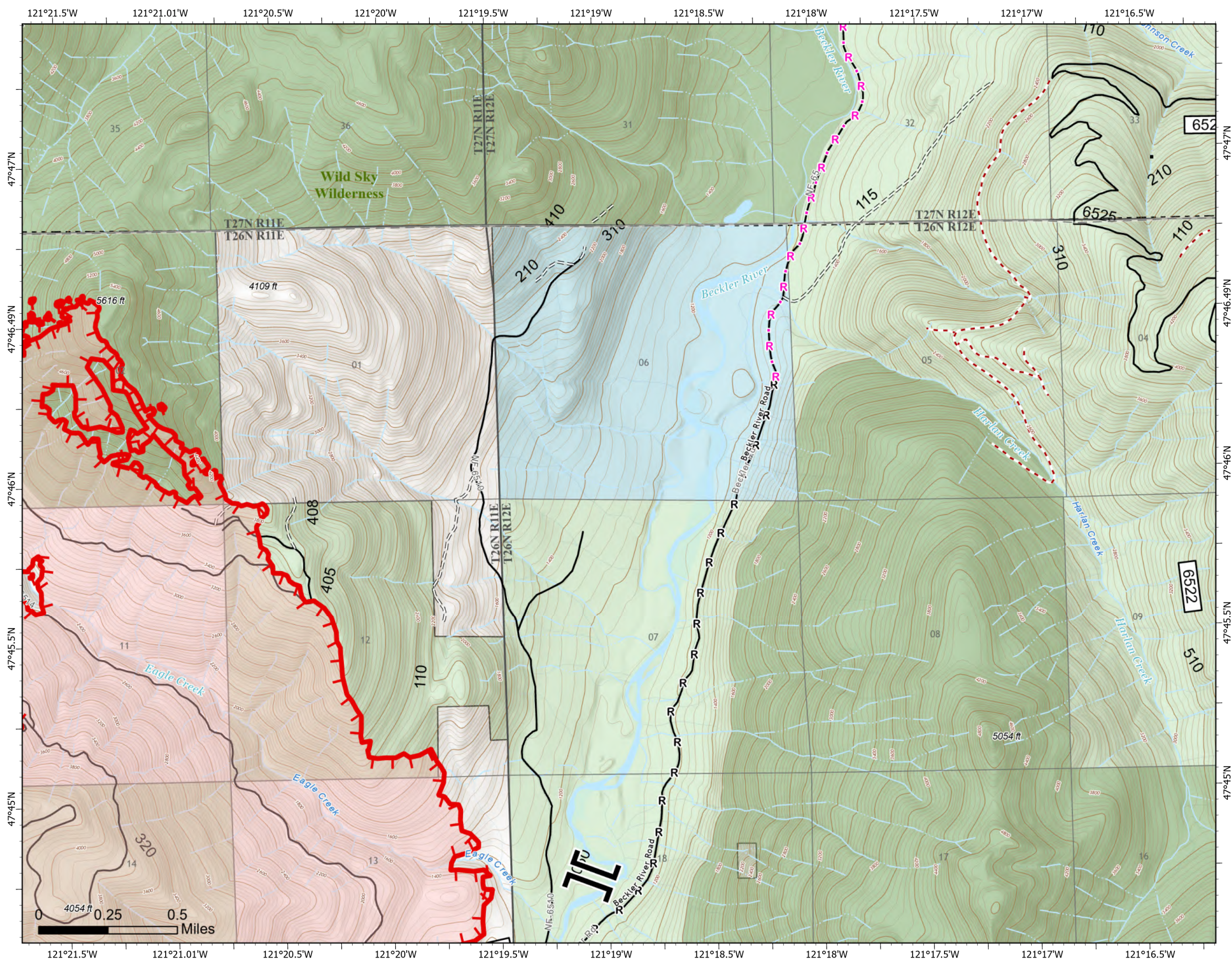
1	2	3	4
5	6	7	8
9	10	11	

Page 8 of 11

- Branch Break
- structures
- Completed Road as Line
- Planned Road as Line
- Uncontained
- Trail
- State
- US Forest Service (USFS)
- Private
- Open Roads
- Closed Roads
- Decommissioned Roads
- Trail
- county
- Wilderness



Map updated:
9/16/2022 2055



IAP

Bolt Creek

WA-NWS-000150

09/17/2022

9,440 acres at 09/12/2022 @2041

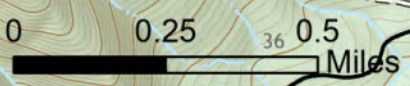
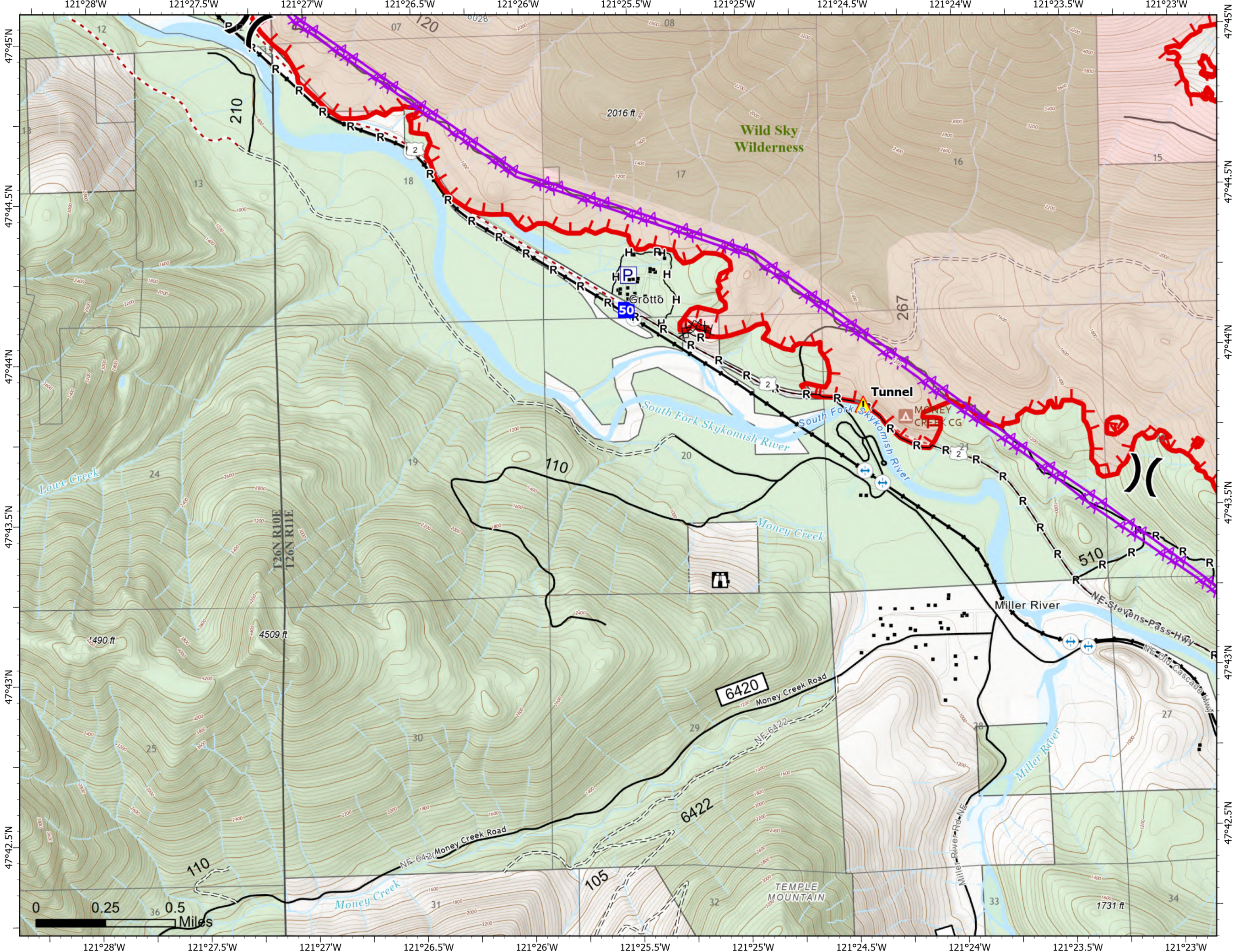
1	2	3	4
5	6	7	8
9	10	11	

Page 9 of 11

- (X) Division Break
- Drop Point
- Ⓜ Lookout
- ▲ Tunnel
- structures
- Label Point
- Ⓟ Pump
- ⊗ Completed Dozer Line
- H Completed Hand Line
- R Completed Road as Line
- Other
- ▲ Aerial Hazard
- Uncontained
- Trail
- US Forest Service (USFS)
- Private
- ▲ Campground
- Ⓡ Bridges
- Ⓡ Railroads
- Open Roads
- Closed Roads
- Decommissioned Roads
- Trail
- county
- Wilderness



Map updated:
9/16/2022 2056



IAP

Bolt Creek

WA-NWS-000150

09/17/2022

9,440 acres at 09/12/2022 @2041

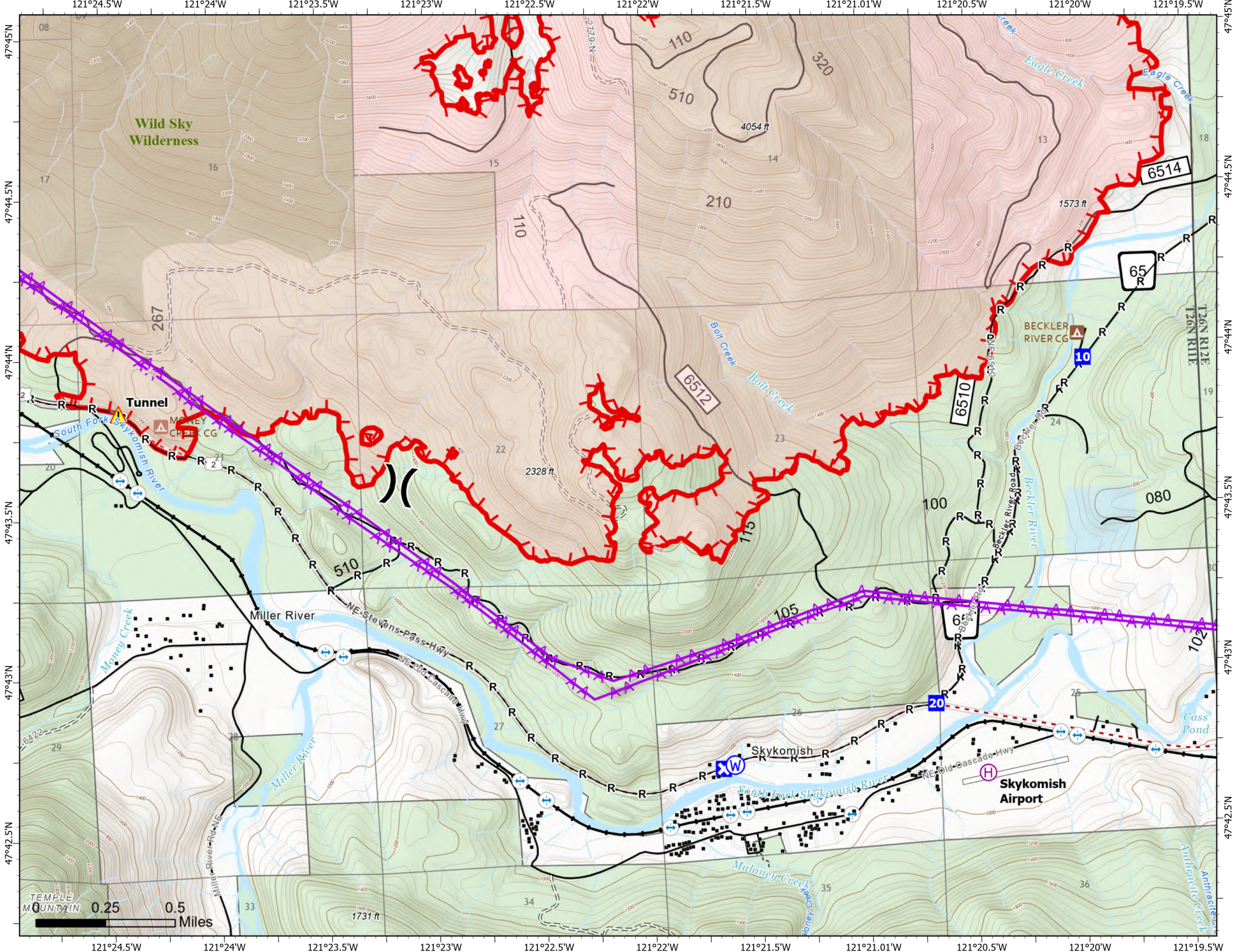
1	2	3	4
5	6	7	8
9	10	11	

Page 10 of 11

- Helibase
- Division Break
- Drop Point
- Closure
- Tunnel
- Water Source
- structures
- Completed Road as Line
- Other
- Aerial Hazard
- Uncontained
- Trail
- Runway
- State
- US Forest Service (USFS)
- Private
- Campground
- Bridges
- Railroads
- Open Roads
- Closed Roads
- Decommissioned Roads
- Trail
- Runway
- county
- Wilderness



Map updated:
9/16/2022 2056



IAP

Bolt Creek

WA-NWS-000150

09/17/2022

9,440 acres at 09/12/2022 @2041

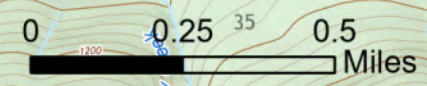
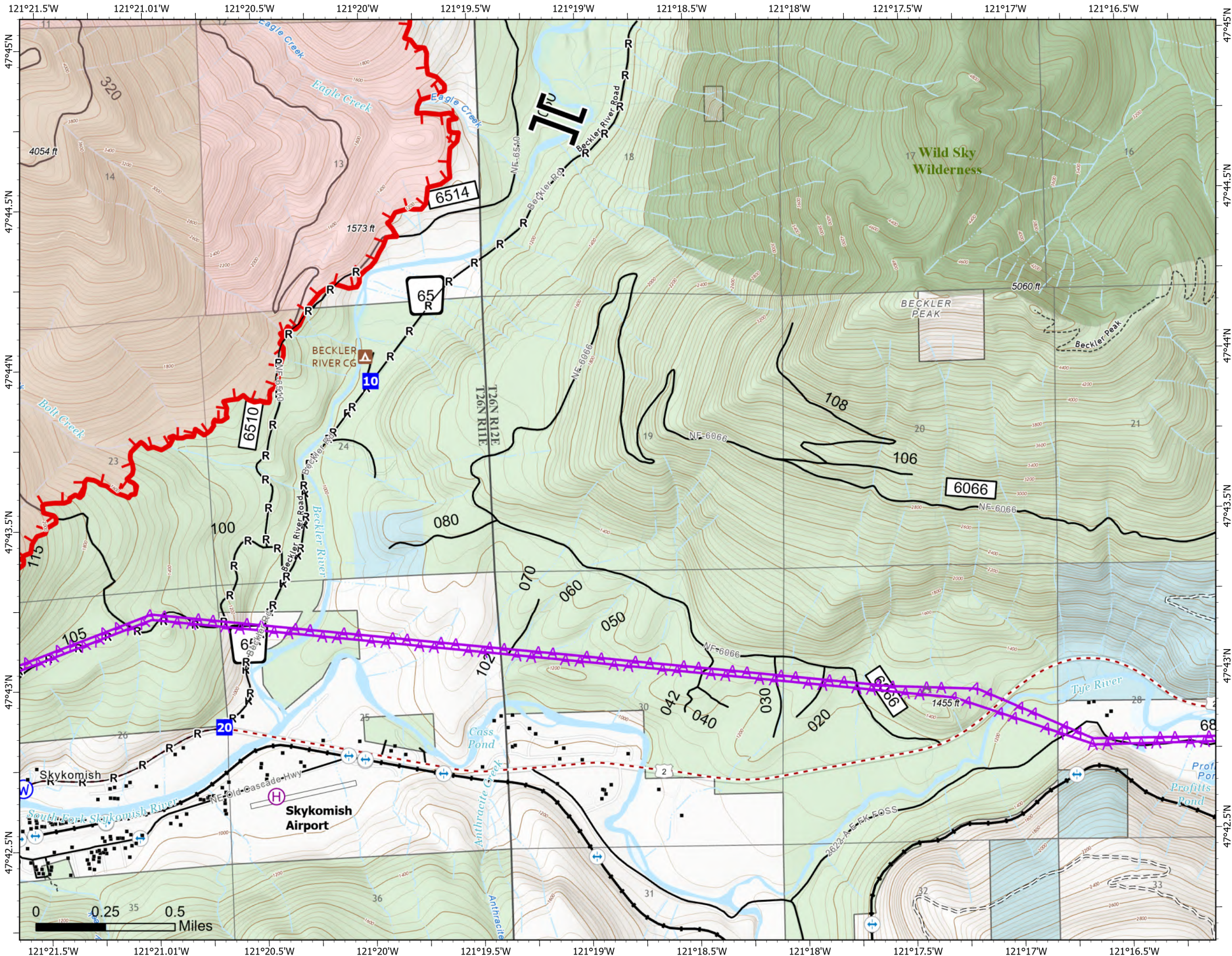
1	2	3	4
5	6	7	8
9	10	11	

Page 11 of 11

- Helibase
- Branch Break
- Drop Point
- Closure
- Water Source
- structures
- Label Point
- Completed Road as Line
- Aerial Hazard
- Uncontained
- Trail
- Runway
- State
- US Forest Service (USFS)
- Private
- Campground
- Bridges
- Railroads
- Open Roads
- Closed Roads
- Decommissioned Roads
- Trail
- Runway
- county
- Wilderness



Map updated:
9/16/2022 2056



Transportation

Bolt Creek

WA-NWS-000150

09/17/2022

9,440 acres at 09/12/2022 @2041

- Helispot
- ⊕ Helibase
-) Division Break
- | Branch Break
- Drop Point
- ⊠ Closure
- ⊞ Lookout
- ⬢ Repeater
- ▲ Tunnel
- ⊕ Water Source
- Completed Burnout
- X Completed Dozer Line
- M Completed Fuel Break
- H Completed Hand Line
- R Completed Road as Line
- Planned Dozer Line
- R Planned Road as Line
- Other
- ▭ Temporary Flight Restriction
- Secondary Hwy
- Local Road
- 4WD
- - - Trail
- Runway
- ⊕ Bridges
- Railroads
- Open Roads
- = Closed Roads
- - - Decommissioned Roads
- - - Decommissioned Roads

