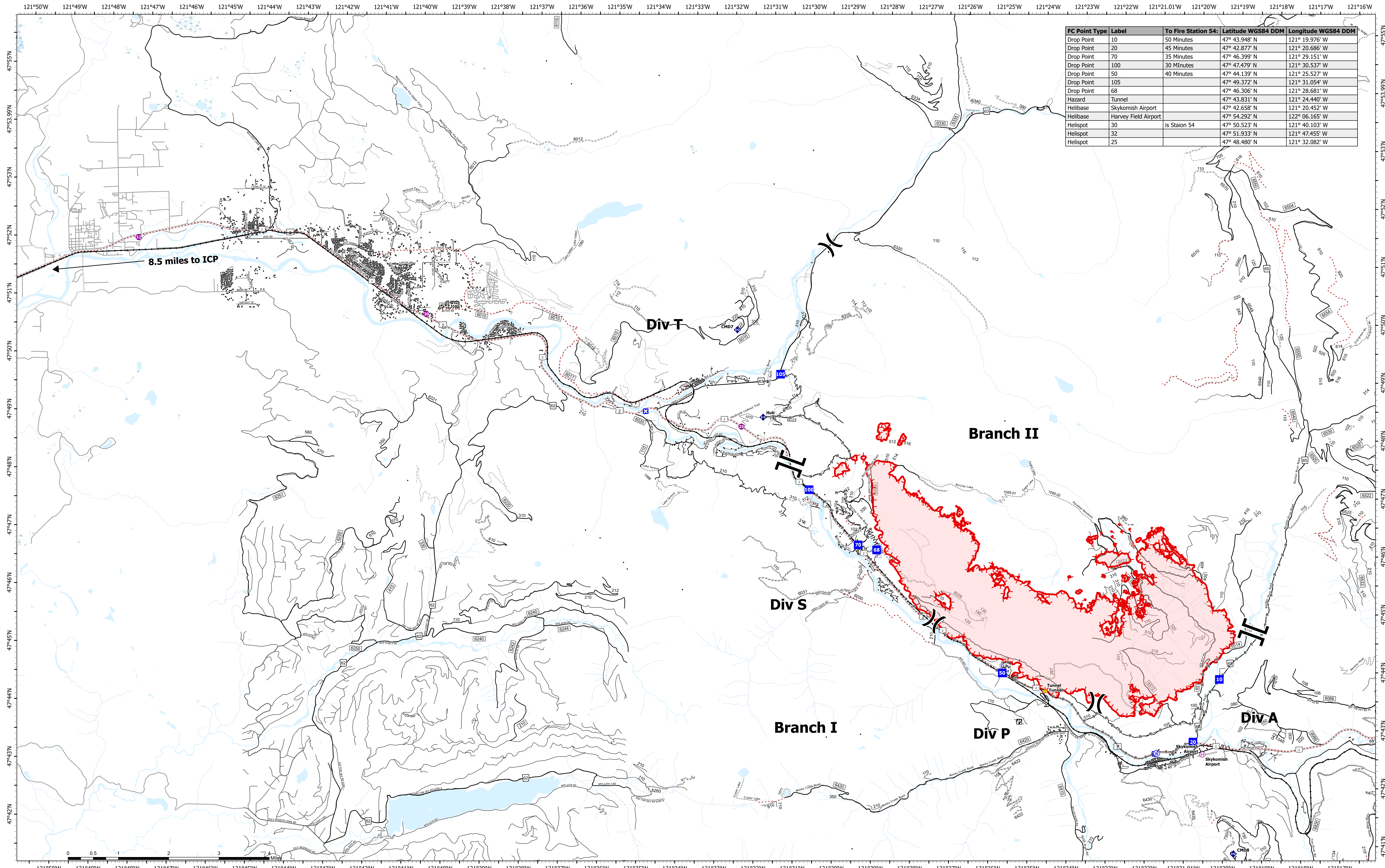


Medical Transportation



Bolt Creek
WA-NWS-000150
09/17/2022

9,440 acres at 09/12/2022 @2041
 Map Updated:
 9/16/2022 2042

- Pump
- Drop Point
- Water Source
- Completed Road as Line
- Open Roads
- Helispot
- Closure
- Completed Burnout
- Other
- Closed Roads
- Helibase
- Lookout
- Completed Dozer Line
- Uncontained
- Decommissioned Roads
- Repeater
- Completed Fuel Break
- Trail
- Division Break
- Hazard
- Completed Hand Line
- Railroads

