

Pilots

Bolt Creek

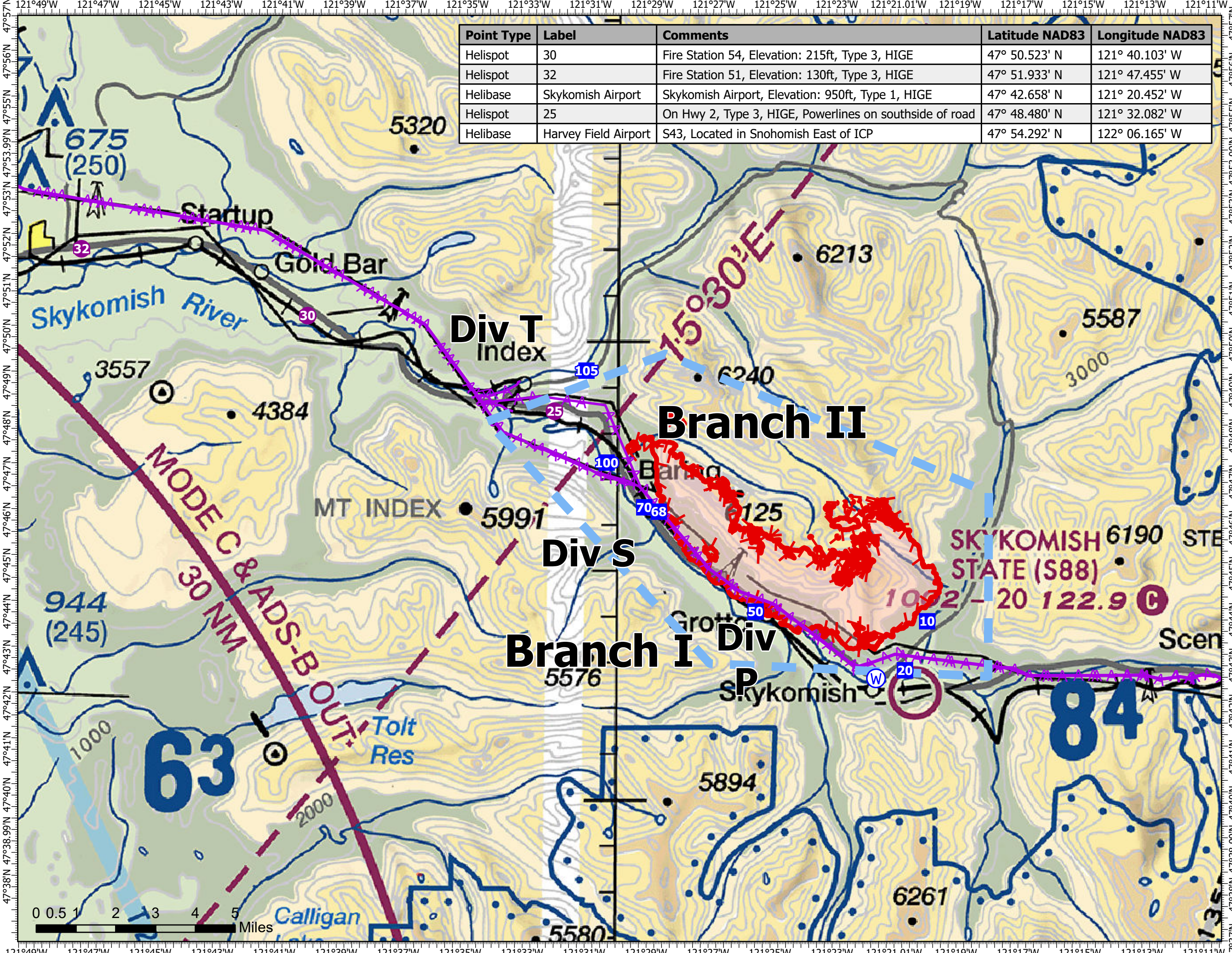
WA-NWS-000150

09/17/2022

9,440 acres at 09/12/2022 @2041

- Helispot
- Drop Point
- ⊙ Water Source
- ▲▲ Aerial Hazard
- ▬ Temporary Flight Restriction
- ▬ Uncontained

Point Type	Label	Comments	Latitude NAD83	Longitude NAD83
Helispot	30	Fire Station 54, Elevation: 215ft, Type 3, HIGE	47° 50.523' N	121° 40.103' W
Helispot	32	Fire Station 51, Elevation: 130ft, Type 3, HIGE	47° 51.933' N	121° 47.455' W
Helibase	Skykomish Airport	Skykomish Airport, Elevation: 950ft, Type 1, HIGE	47° 42.658' N	121° 20.452' W
Helispot	25	On Hwy 2, Type 3, HIGE, Powerlines on southside of road	47° 48.480' N	121° 32.082' W
Helibase	Harvey Field Airport	S43, Located in Snohomish East of ICP	47° 54.292' N	122° 06.165' W



R. Armstrong
9/16/2022 2032

