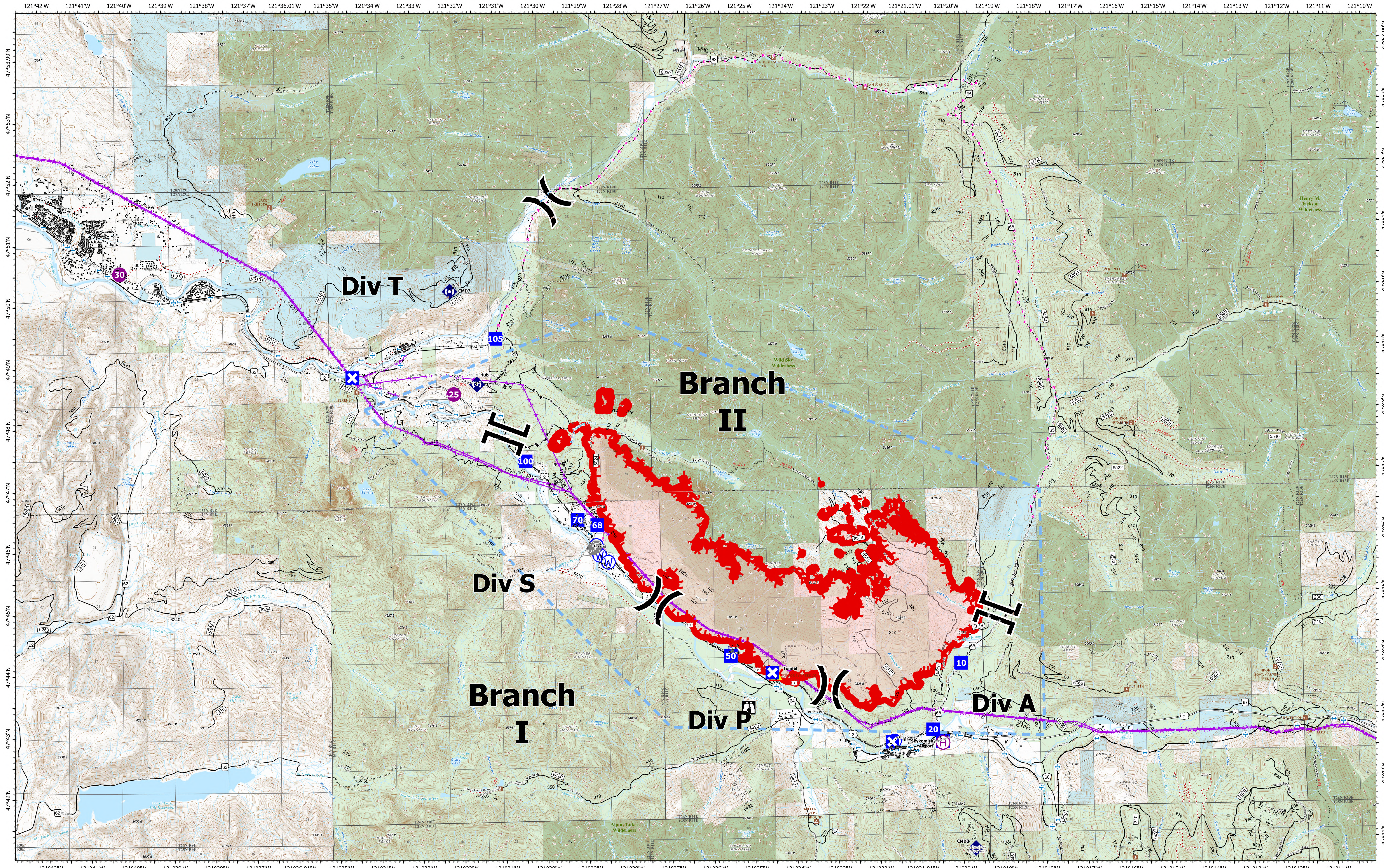


Briefing



Bolt Creek
WA-NWS-000150
09/19/2022

10,220 acres at 09/16/2022 @2022

9/18/2022 2054

- | | | | | | |
|----------------|--------------|--------------|---------------------------|-------------------------------------|---------------------------------|
| Pump | Drop Point | Tunnel | Day Use/Picnic | Forest Service Decommissioned Roads | US Forest Service (USFS) |
| Water Tank | Closure | Water Source | Lookout/Cabin | Trail | Private |
| Helispot | Lookout | Uncontained | Trailhead | county | Major Highways |
| Helibase | Fire Station | Bridges | Railroads | Wilderness | Bureau of Land Management (BLM) |
| Division Break | Bridge | Campground | Forest Service Open Roads | Forest Service Closed Roads | State |
| Branch Break | Repeater | | | | |

