

# Transportation

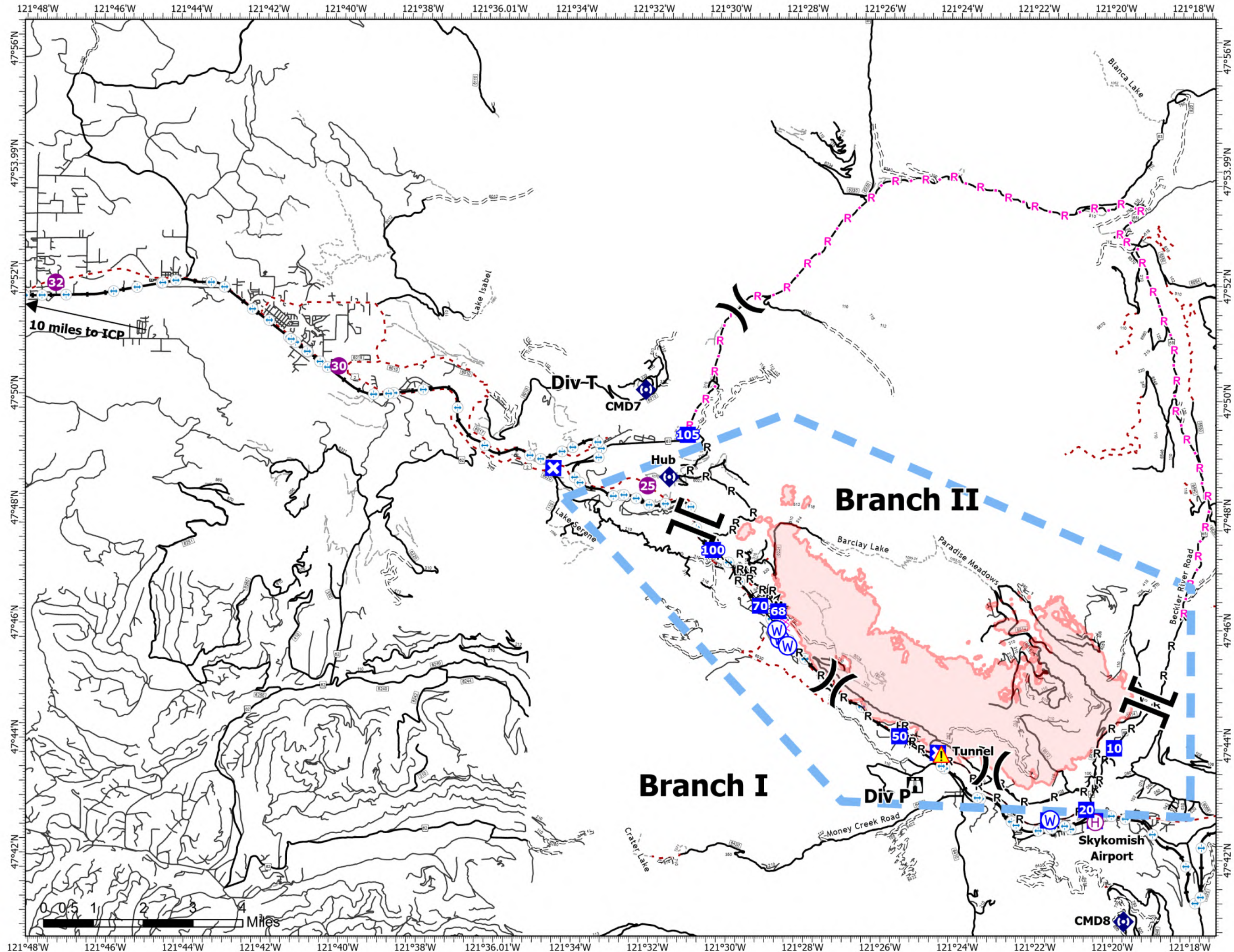
## Bolt Creek

### WA-NWS-000150

#### 09/19/2022

10,220 acres at 09/16/2022 @2022

- Helispot
- ⊕ Helibase
- X Division Break
- || Branch Break
- Drop Point
- ⊠ Closure
- ⊞ Lookout
- ⊙ Fire Station
- ⊕ Bridge
- ◆ Repeater
- ▲ Tunnel
- ⊕ Water Source
- Completed Burnout
- ⊞ Completed Dozer Line
- M Completed Fuel Break
- H Completed Hand Line
- M Completed Mixed Construction Line
- R Completed Road as Line
- Planned Dozer Line
- R Planned Road as Line
- Other
- Temporary Flight Restriction
- Secondary Hwy
- Local Road
- 4WD
- - - Trail
- Runway
- ⊕ Bridges
- Railroads
- Open Roads
- = Closed Roads
- - - Decommissioned Roads
- - - Decommissioned Roads



Map Updated  
9/18/2022 2101

