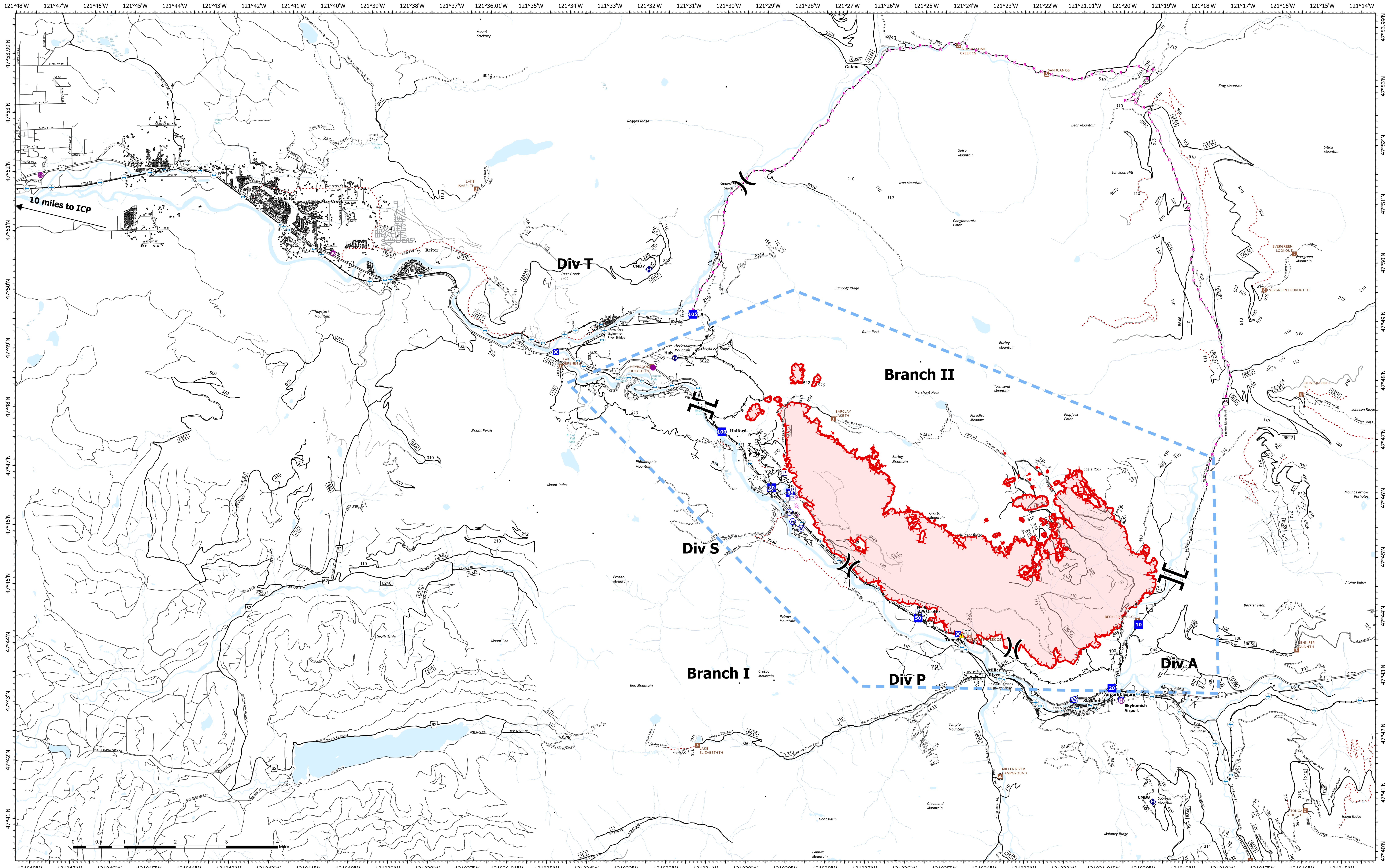


Transportation



Bolt Creek
WA-NWS-000150
09/19/2022

10,220 acres at 09/16/2022 @2022

9/18/2022 2049

- | | | | | | |
|----------------|--------------|-----------------------------------|------------------------------|---------------|----------------------|
| Pump | Closure | Completed Burnout | Planned Road as Line | Trail | Closed Roads |
| Water Tank | Lookout | Completed Dozer Line | Other | Campground | Decommissioned Roads |
| Helispot | Fire Station | Completed Fuel Break | Temporary Flight Restriction | LOOKOUT/CABIN | Decommissioned Roads |
| Helibase | Bridge | Completed Hand Line | Uncontained | TRAILHEAD | Trail |
| Division Break | Repeater | Completed Mixed Construction Line | Secondary Hwy | Bridges | Runway |
| Branch Break | Tunnel | Completed Road as Line | Local Road | Railroads | Major Highways |
| Drop Point | Water Source | Planned Dozer Line | 4WD | Open Roads | |

