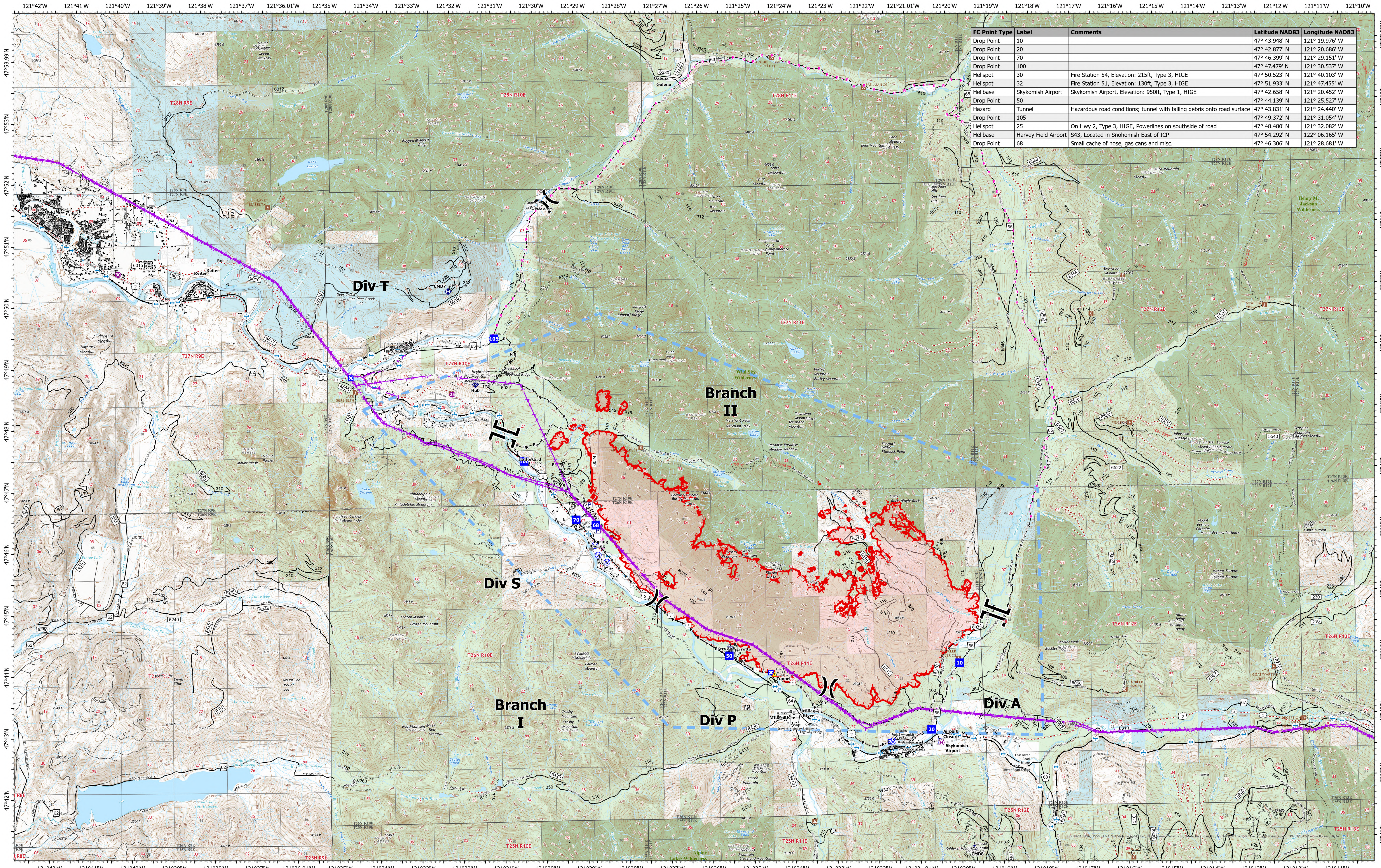


Communications



FC Point Type	Label	Comments	Latitude NAD83	Longitude NAD83
Drop Point	10		47° 43.948' N	121° 19.976' W
Drop Point	20		47° 42.877' N	121° 20.686' W
Drop Point	70		47° 46.399' N	121° 29.151' W
Drop Point	100		47° 47.479' N	121° 30.537' W
Helispot	30	Fire Station 54, Elevation: 215ft, Type 3, HIGE	47° 50.523' N	121° 40.103' W
Helispot	32	Fire Station 51, Elevation: 130ft, Type 3, HIGE	47° 51.933' N	121° 47.455' W
Helibase	Skykomish Airport	Skykomish Airport, Elevation: 950ft, Type 1, HIGE	47° 42.658' N	121° 20.452' W
Drop Point	50		47° 44.139' N	121° 25.527' W
Hazard	Tunnel	Hazardous road conditions; tunnel with falling debris onto road surface	47° 43.831' N	121° 24.440' W
Drop Point	105		47° 49.372' N	121° 31.054' W
Helispot	25	On Hwy 2, Type 3, HIGE, Powerlines on southside of road	47° 48.480' N	121° 32.082' W
Helibase	Harvey Field Airport	S43, Located in Snohomish East of ICP	47° 54.292' N	122° 06.165' W
Drop Point	68	Small cache of hose, gas cans and misc.	47° 46.306' N	121° 28.681' W

Bolt Creek
WA-NWS-000150
09/19/2022

10,220 acres at 09/16/2022 @2022

9/18/2022 2056

- Pump
- Drop Point
- Hazard
- Completed Mixed Construction Line
- Temporary Flight Restriction
- Bridges
- Decommissioned Roads
- US Forest Service (USFS)
- Water Tank
- Closure
- Water Source
- Completed Road as Line
- Railroads
- Private
- Helispot
- Lookout
- Completed Burnout
- Planned Dozer Line
- Uncontained
- Forest Service Open Roads
- Trail
- Helibase
- Fire Station
- Completed Dozer Line
- Planned Road as Line
- Day Use/Picnic
- Forest Service Closed Roads
- Wilderness
- Division Break
- Bridge
- Completed Fuel Break
- Other
- Lookout/Cabin
- Forest Service Decommissioned Roads
- Bureau of Land Management (BLM)
- Branch Break
- Repeater
- Completed Hand Line
- Aerial Hazard
- Trailhead
- State

