

IAP

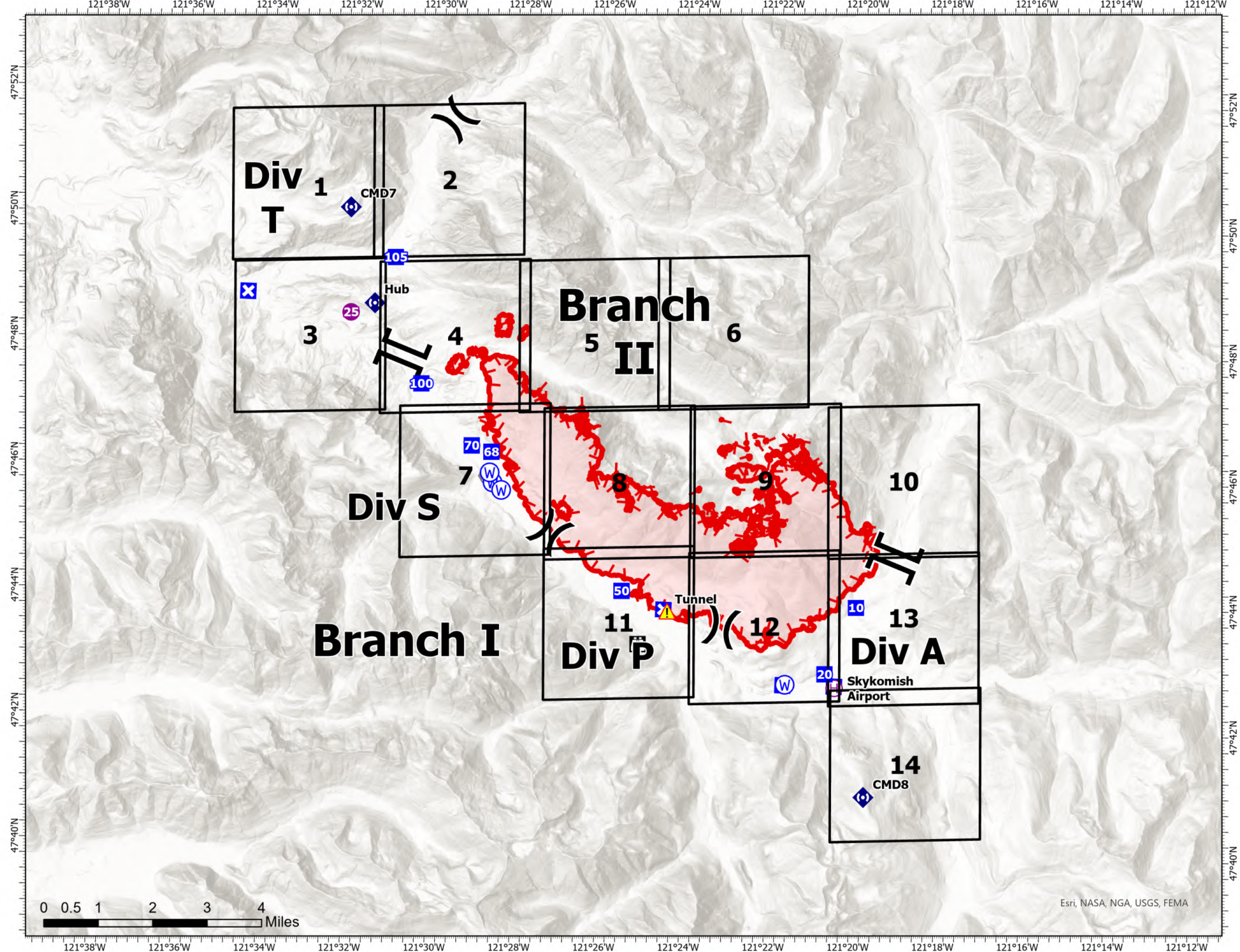
Bolt Creek

WA-NWS-000150

09/19/2022

10,220 acres at 09/16/2022 @2022

- Helispot
- ⊕ Helibase
- ⌘ Division Break
- ⌚ Branch Break
- Drop Point
- ⊗ Closure
- 🏠 Lookout
- 🚒 Fire Station
- 🌉 Bridge
- ⬢ Repeater
- ⚠ Tunnel
- Ⓜ Water Source
- ▬ Uncontained



Map updated:
9/18/2022 2027



Esri, NASA, NGA, USGS, FEMA

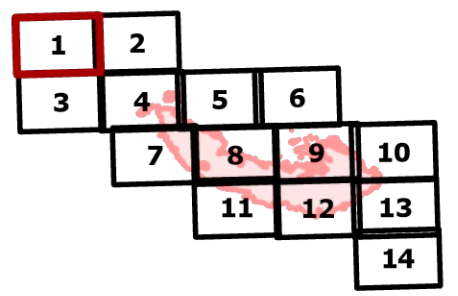
IAP

Bolt Creek

WA-NWS-000150

09/19/2022

10,220 acres at 09/16/2022 @2022

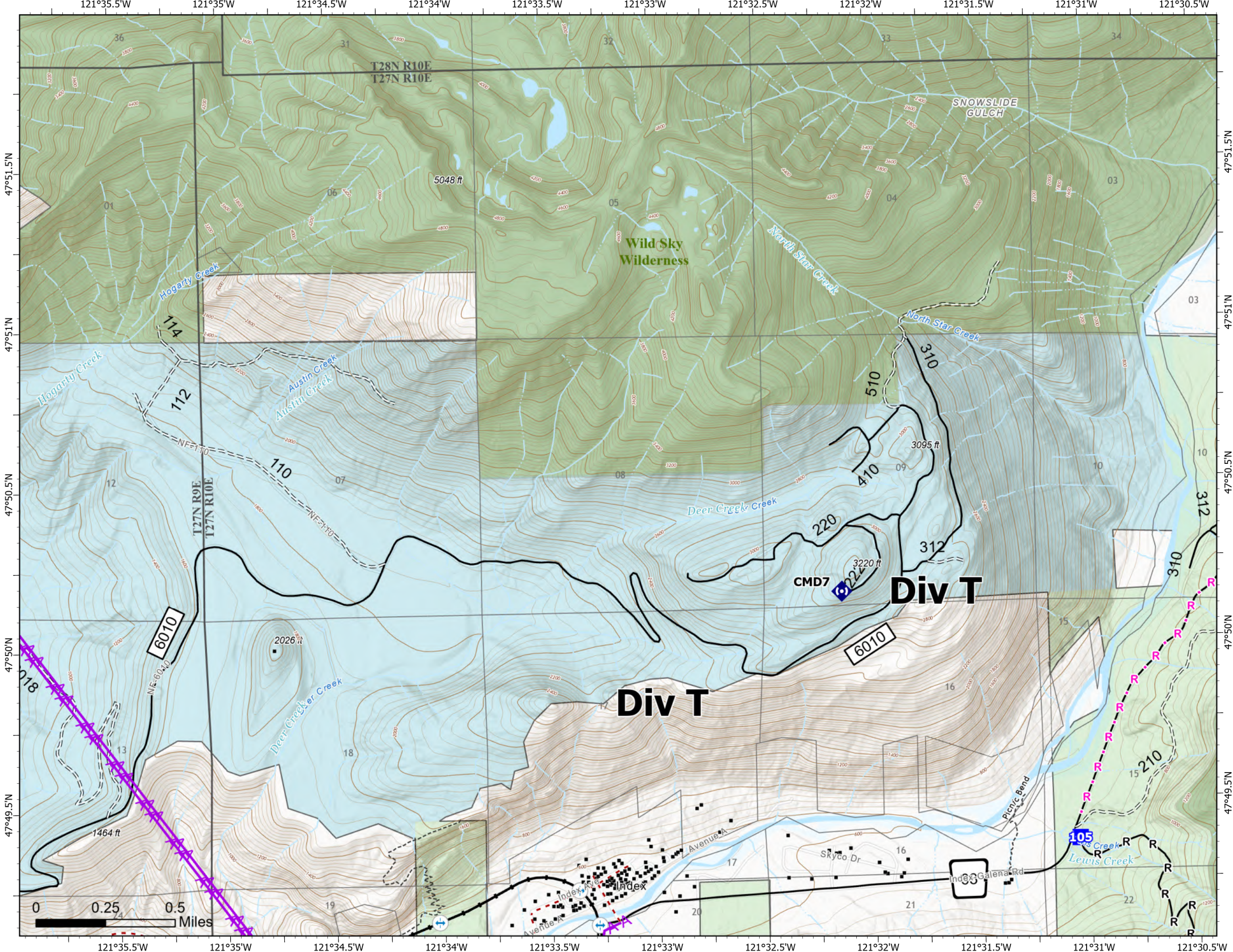


Page 1 of 14

- Drop Point
- Repeater
- structures
- Completed Road as Line
- Planned Road as Line
- Aerial Hazard
- Trail
- State
- US Forest Service (USFS)
- Private
- Undetermined
- Bridges
- Railroads
- Open Roads
- Closed Roads
- Decommissioned Roads
- Trail
- county
- Wilderness



Map updated:
9/18/2022 2032



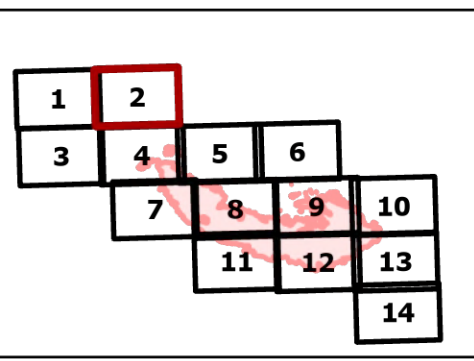
IAP

Bolt Creek

WA-NWS-000150

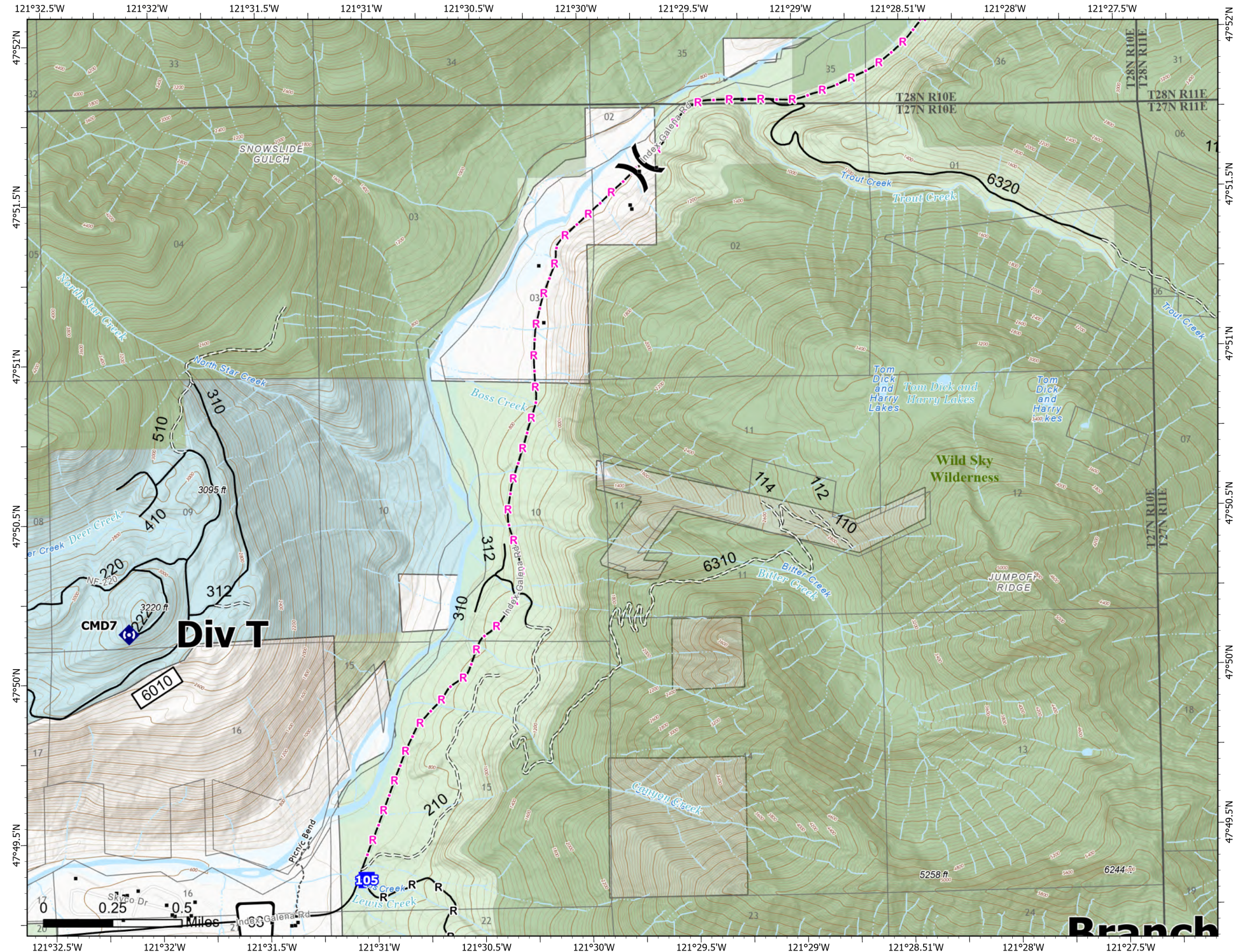
09/19/2022

10,220 acres at 09/16/2022 @2022

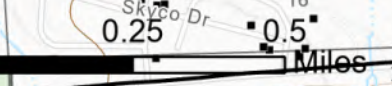


Page 2 of 14

- (X) Division Break
- Drop Point
- Ⓜ Repeater
- structures
- R — Completed Road as Line
- R · — Planned Road as Line
- - - Trail
- State
- US Forest Service (USFS)
- Private
- Undetermined
- Open Roads
- Closed Roads
- Trail
- county
- Wilderness



Map updated:
9/18/2022 2033



Branch

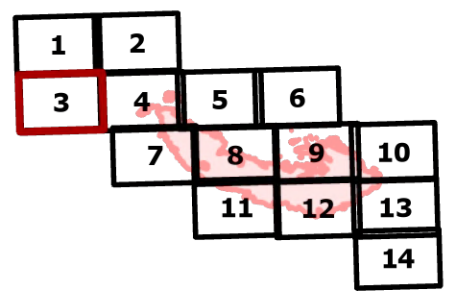
IAP

Bolt Creek

WA-NWS-000150

09/19/2022

10,220 acres at 09/16/2022 @2022

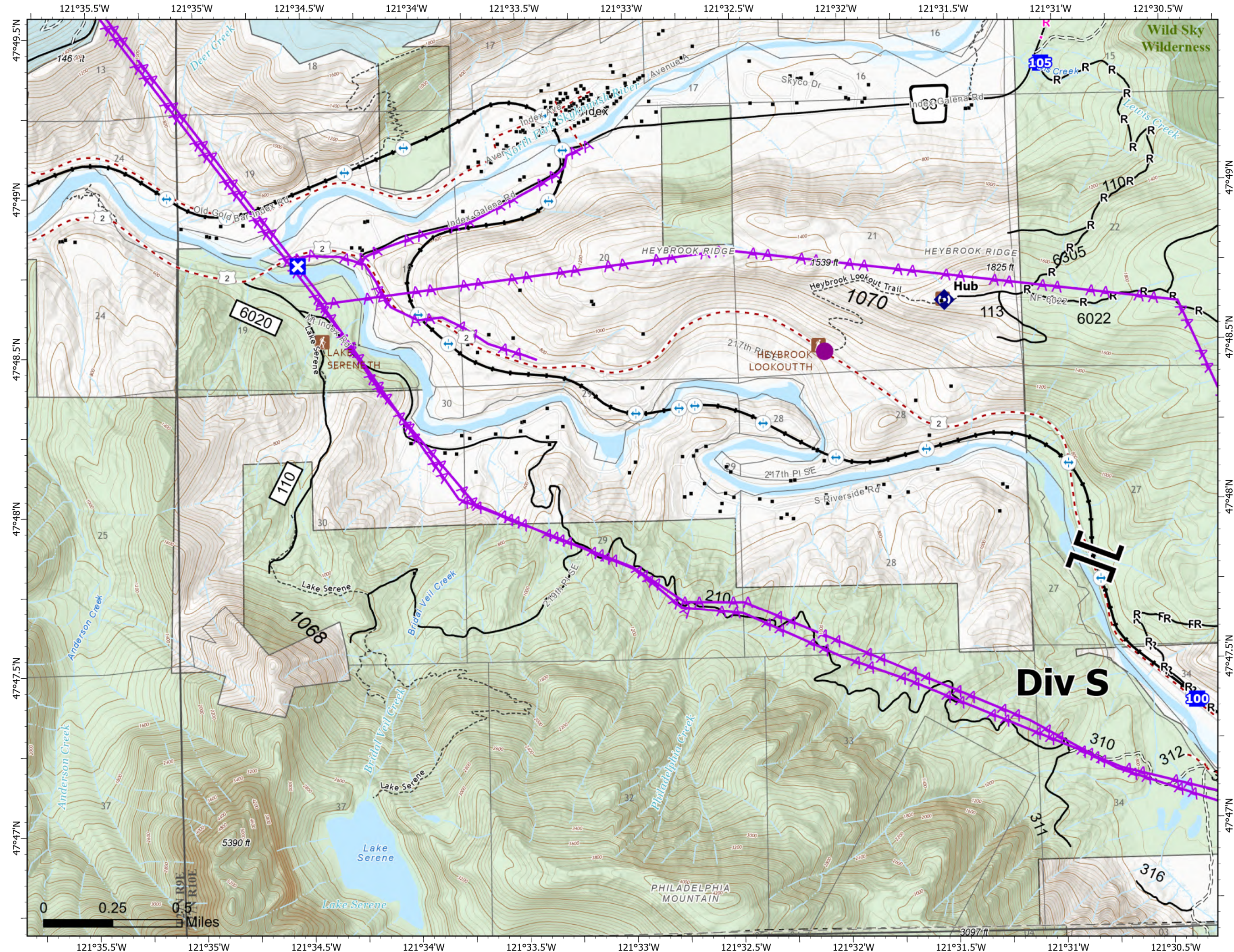


Page 3 of 14

- Helispot
- Branch Break
- Drop Point
- Closure
- Repeater
- structures
- Completed Road as Line
- Planned Road as Line
- Aerial Hazard
- Trail
- State
- US Forest Service (USFS)
- Private
- Undetermined
- LOOKOUT/CABIN
- TRAILHEAD
- Bridges
- Railroads
- Open Roads
- Closed Roads
- Decommissioned Roads
- Trail
- county
- Wilderness



Map updated:
9/18/2022 2033



0 0.25 0.5 Miles

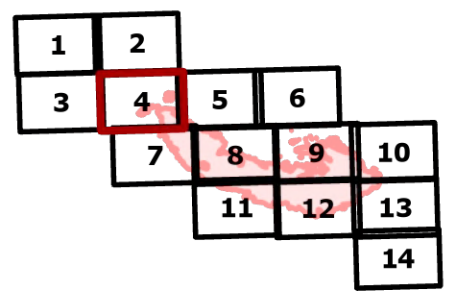
IAP

Bolt Creek

WA-NWS-000150

09/19/2022

10,220 acres at 09/16/2022 @2022

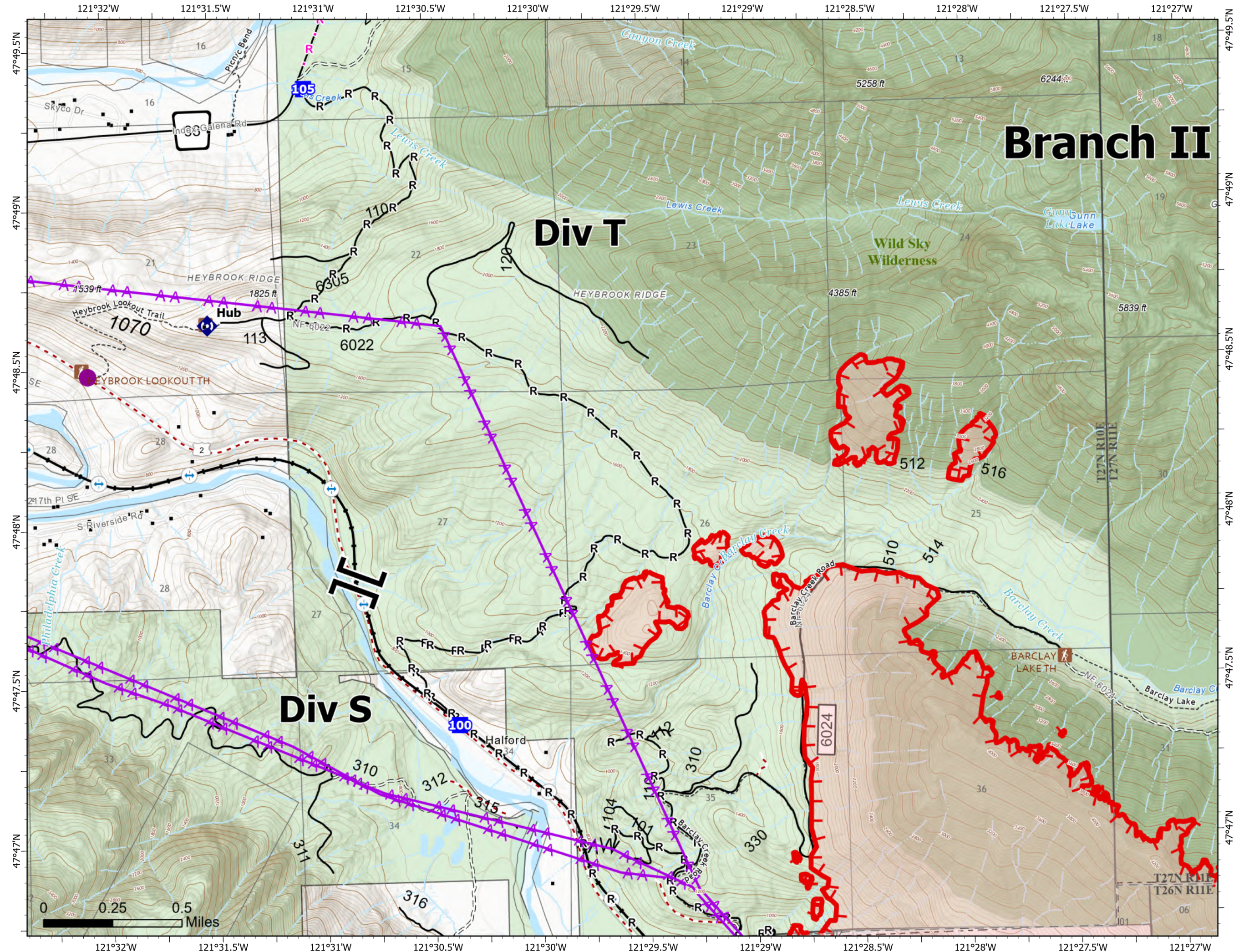


Page 4 of 14

- Helispot
- Branch Break
- Drop Point
- Repeater
- structures
- Completed Dozer Line
- Completed Fuel Break
- Completed Road as Line
- Planned Road as Line
- Aerial Hazard
- Uncontained
- Trail
- US Forest Service (USFS)
- Private
- Undetermined
- LOOKOUT/CABIN
- TRAILHEAD
- Bridges
- Railroads
- Open Roads
- Closed Roads
- Decommissioned Roads
- Trail
- county
- Wilderness



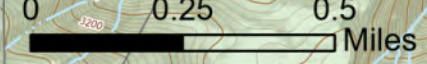
Map updated:
9/18/2022 2033



Branch II

Div T

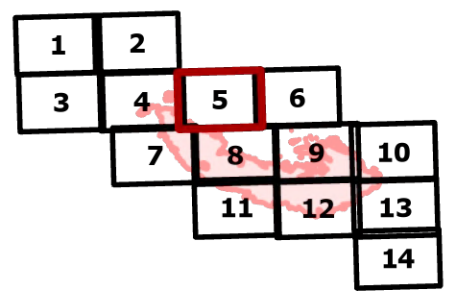
Div S



T27N R10E
T27N R11E
T26N R11E

IAP
Bolt Creek
WA-NWS-000150
09/19/2022

10,220 acres at 09/16/2022 @2022

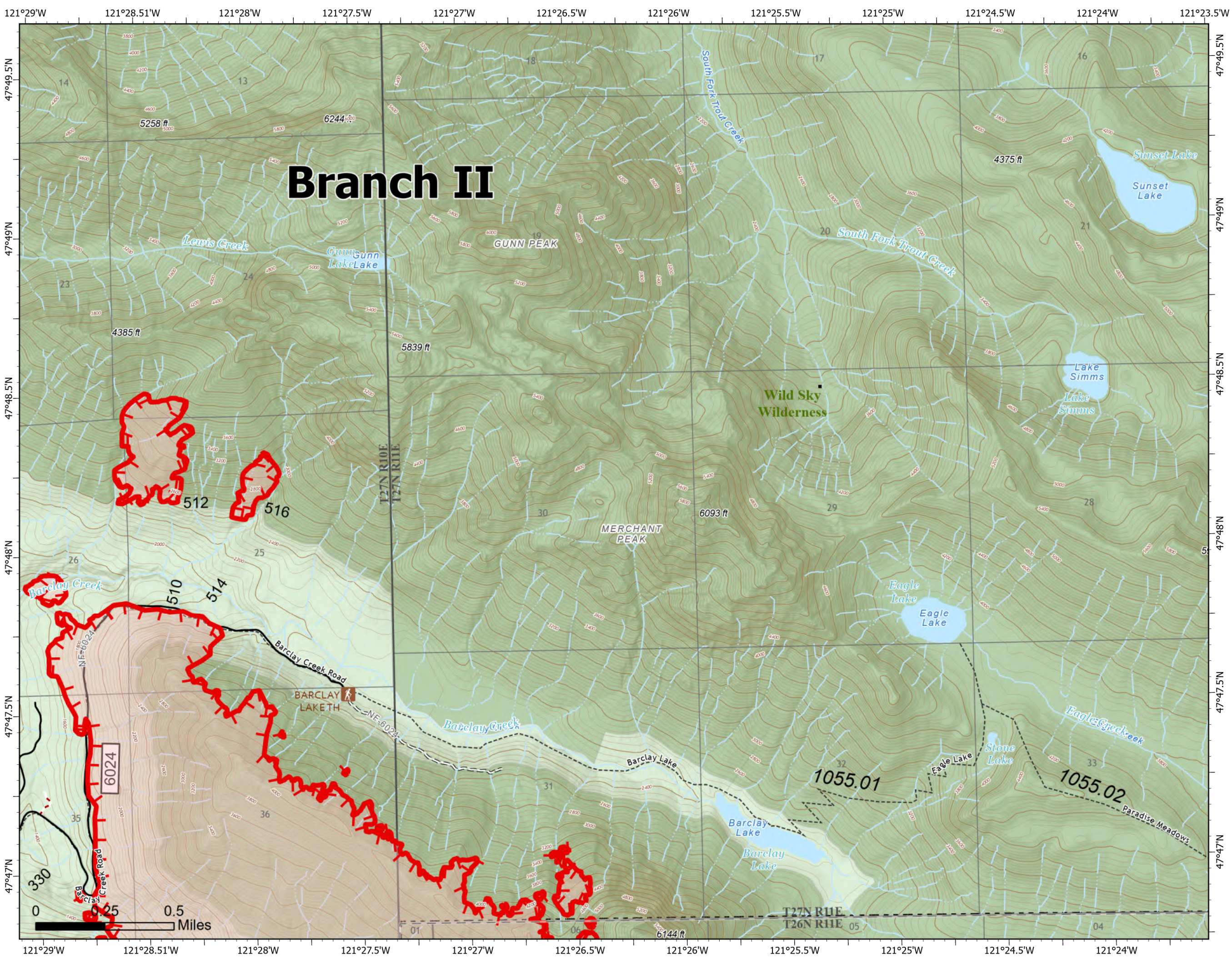


Page 5 of 14

- structures
- Uncontained
- Trail
- US Forest Service (USFS)
- TRAILHEAD
- Open Roads
- Closed Roads
- Decommissioned Roads
- Trail
- county
- Wilderness



Map updated:
9/18/2022 2034



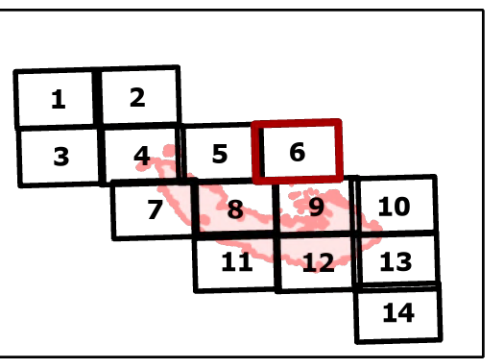
IAP

Bolt Creek






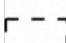


WA-NWS-000150

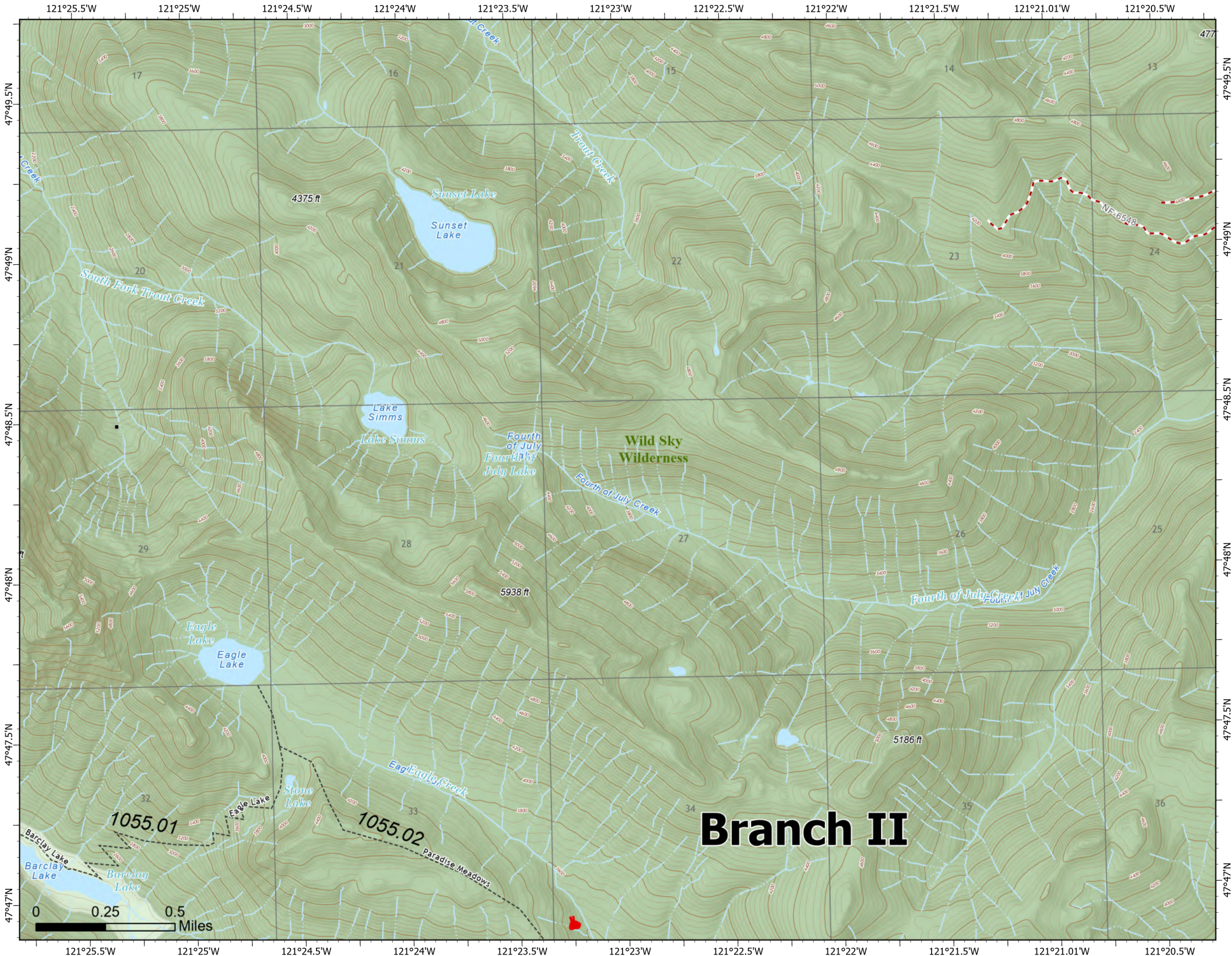
09/19/2022

10,220 acres at 09/16/2022 @2022



Page 6 of 14

-  structures
-  Uncontained
-  Trail
-  US Forest Service (USFS)
-  Decommissioned Roads
-  Trail
-  county
-  Wilderness



Branch II



Map updated:
9/18/2022 2034



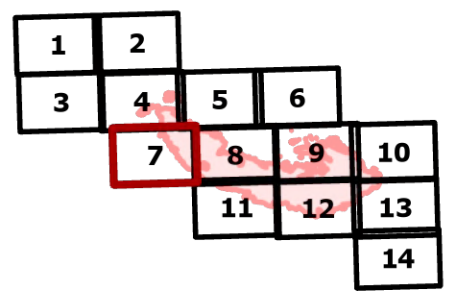
IAP

Bolt Creek

WA-NWS-000150

09/19/2022

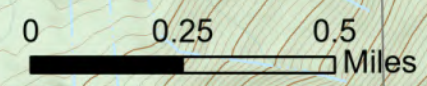
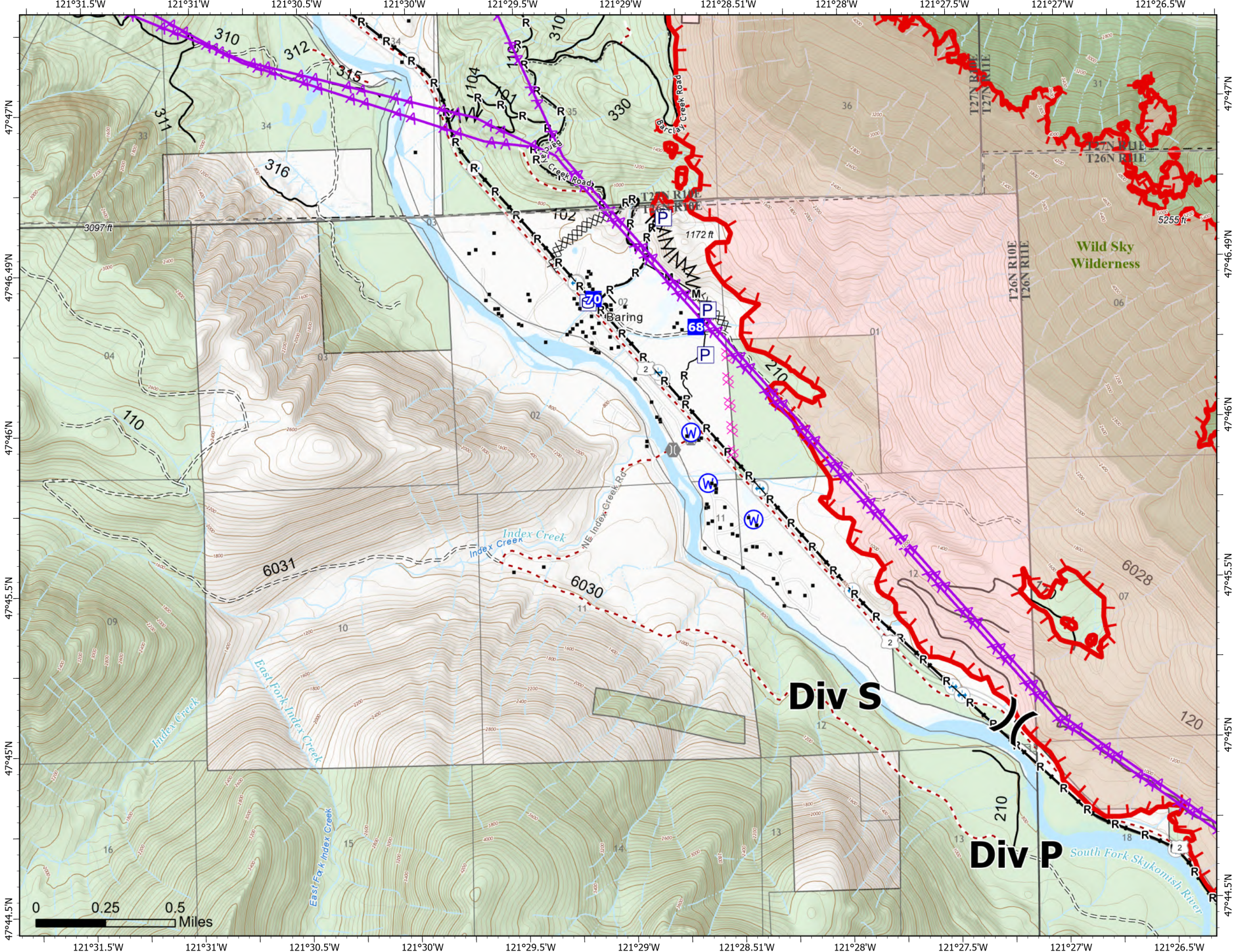
10,220 acres at 09/16/2022 @2022



- (X) Division Break
- Drop Point
- Fire Station
- ⊕ Bridge
- ⊕ Water Source
- structures
- ⊕ Pump
- ⊕ Water Tank
- Completed Burnout
- XX Completed Dozer Line
- Completed Fuel Break
- M— Completed Mixed Construction Line
- R— Completed Road as Line
- Planned Dozer Line
- Aerial Hazard
- Uncontained
- Trail
- US Forest Service (USFS)
- Private
- ⊕ Bridges
- ⊕ Railroads
- Open Roads
- Closed Roads
- Decommissioned Roads
- Decommissioned Roads
- Trail
- county
- Wilderness



Map updated:
9/18/2022 2034



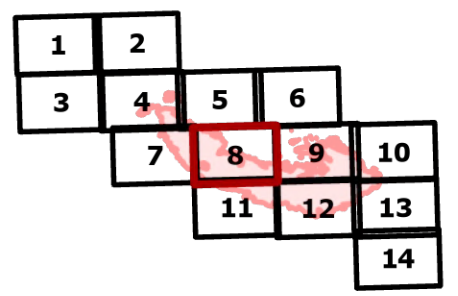
IAP

Bolt Creek

WA-NWS-000150

09/19/2022

10,220 acres at 09/16/2022 @2022

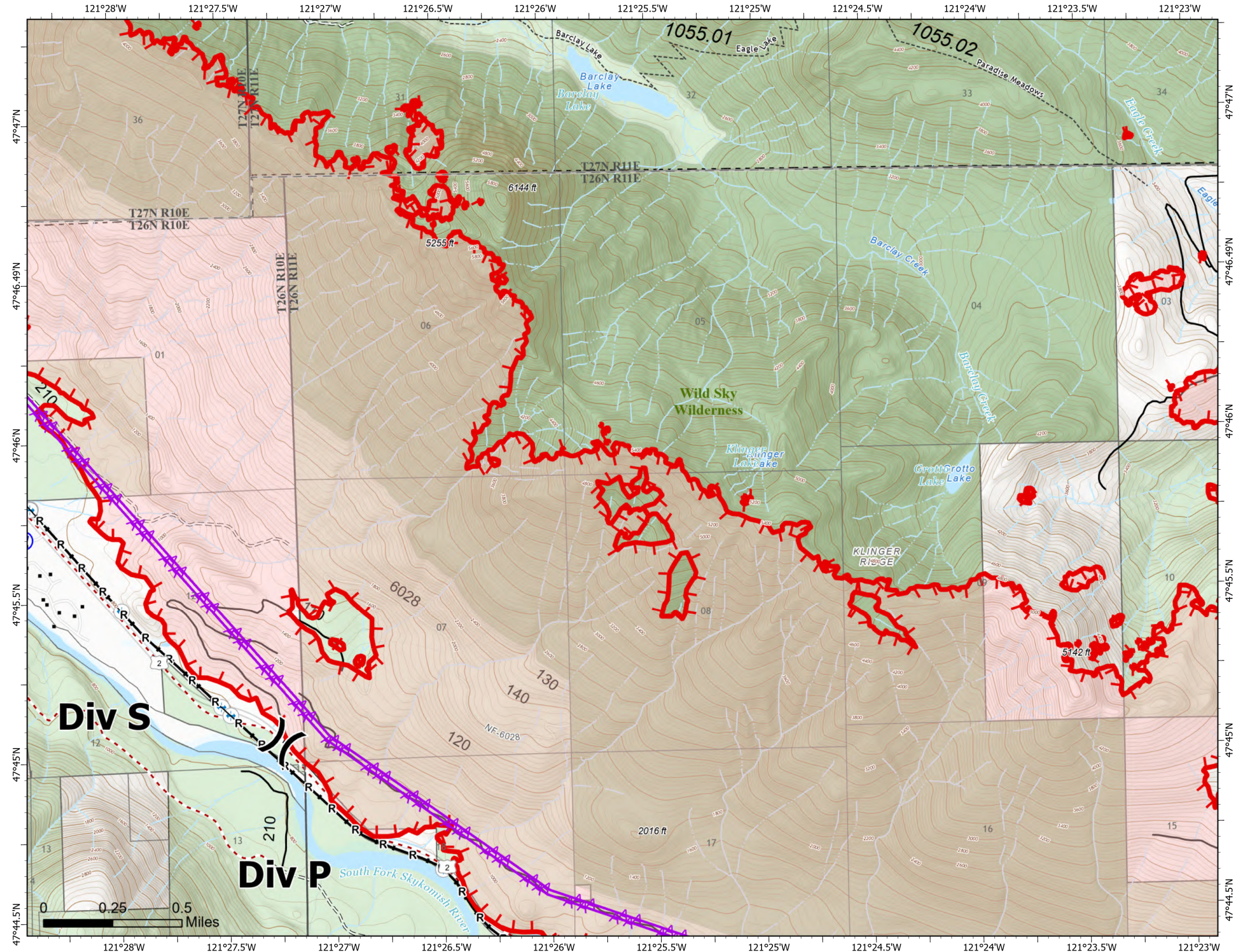


Page 8 of 14

- (X) Division Break
- (W) Water Source
- structures
- R— Completed Road as Line
- ⚡ Aerial Hazard
- ▭ Uncontained
- Trail
- US Forest Service (USFS)
- Private
- ⤴ Bridges
- ⚓ Railroads
- Open Roads
- == Closed Roads
- - - Decommissioned Roads
- Trail
- - - county
- Wilderness

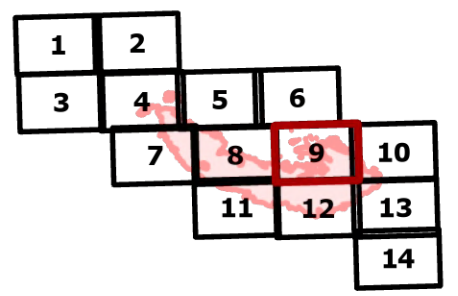


Map updated:
9/18/2022 2035



IAP
Bolt Creek
WA-NWS-000150
09/19/2022

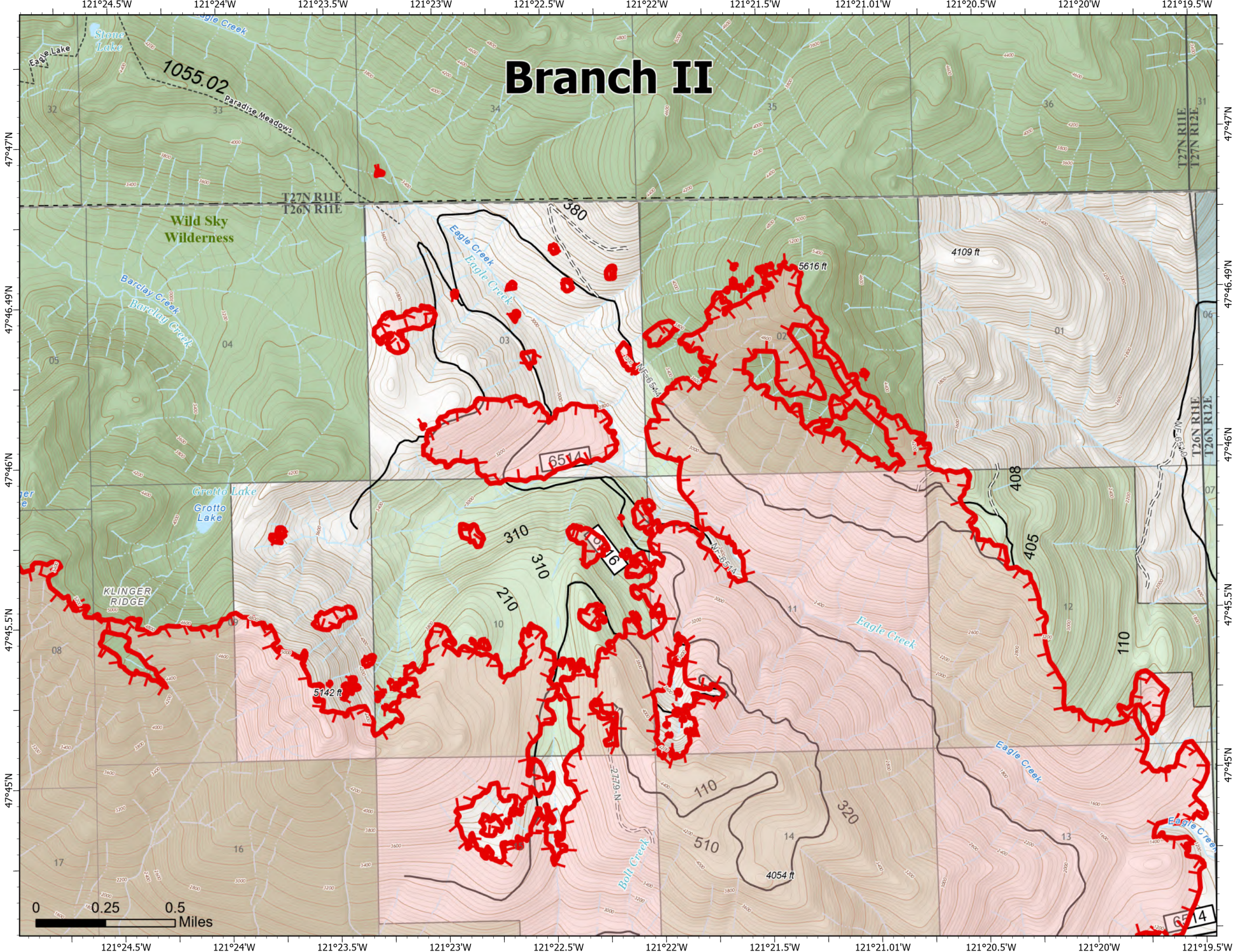
10,220 acres at 09/16/2022 @2022



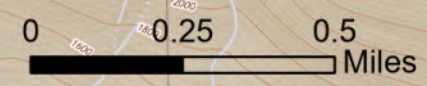
Page 9 of 14

- Uncontained
- Trail
- State
- US Forest Service (USFS)
- Private
- Open Roads
- Closed Roads
- Trail
- county
- Wilderness

Branch II



Map updated:
9/18/2022 2035



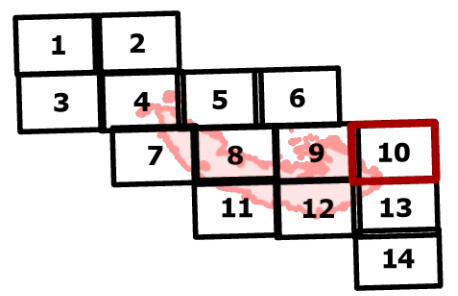
IAP

Bolt Creek

WA-NWS-000150

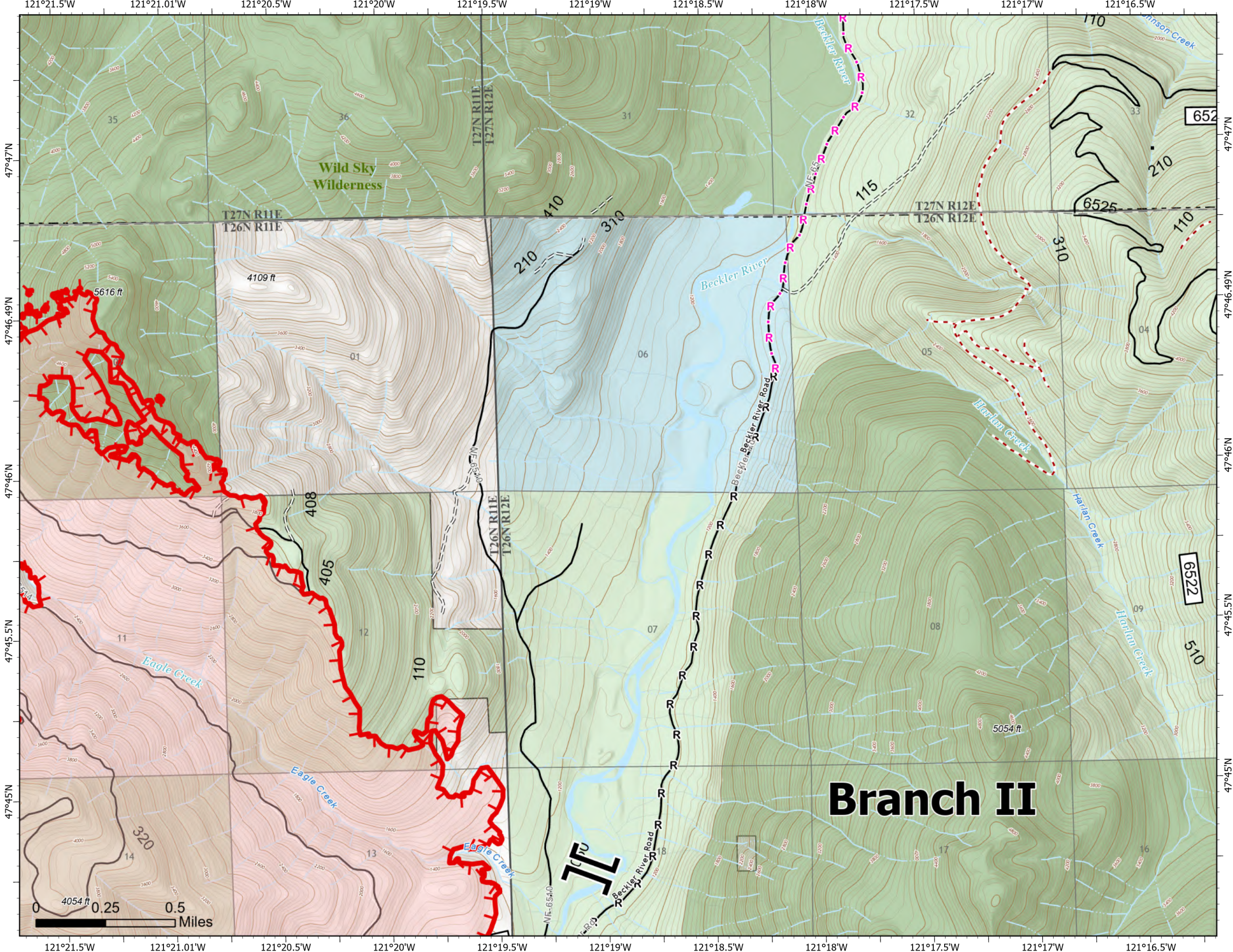
09/19/2022

10,220 acres at 09/16/2022 @2022



Page 10 of 14

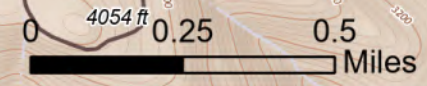
- Branch Break
- structures
- Completed Road as Line
- Planned Road as Line
- Uncontained
- Trail
- State
- US Forest Service (USFS)
- Private
- Open Roads
- Closed Roads
- Decommissioned Roads
- Trail
- county
- Wilderness



Branch II



Map updated:
9/18/2022 2035



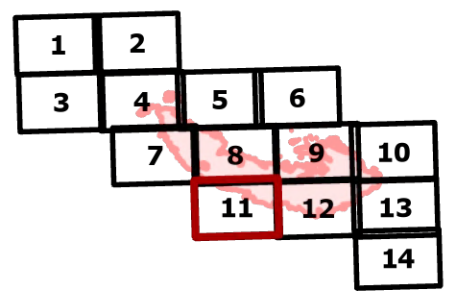
IAP

Bolt Creek

WA-NWS-000150

09/19/2022

10,220 acres at 09/16/2022 @2022

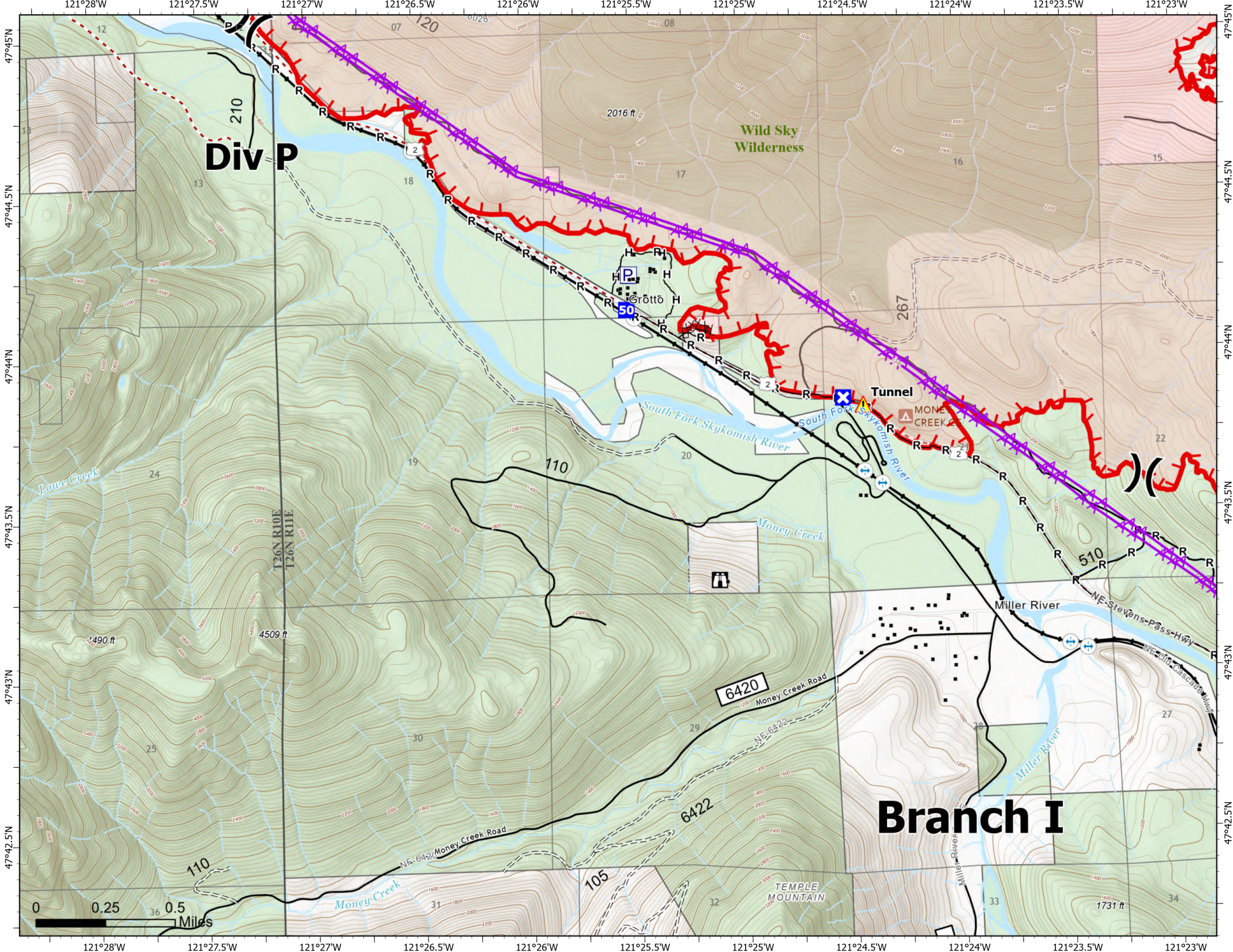


Page 11 of 14

- (X) Division Break
- Drop Point
- ⊠ Closure
- ⊠ Lookout
- ⚠ Tunnel
- structures
- Ⓟ Pump
- ⊗ Completed Dozer Line
- H Completed Hand Line
- R Completed Road as Line
- Other
- ⚡ Aerial Hazard
- ⚠ Uncontained
- Trail
- US Forest Service (USFS)
- Private
- Ⓜ Campground
- Ⓡ Bridges
- ⚓ Railroads
- Open Roads
- Closed Roads
- Decommissioned Roads
- Trail
- county
- Wilderness



Map updated:
9/18/2022 2036



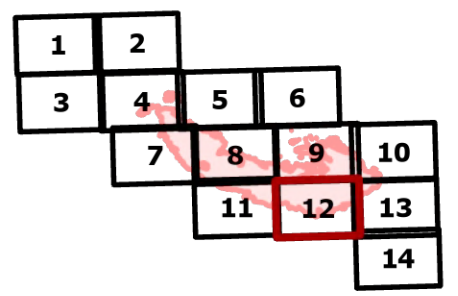
IAP

Bolt Creek

WA-NWS-000150

09/19/2022

10,220 acres at 09/16/2022 @2022

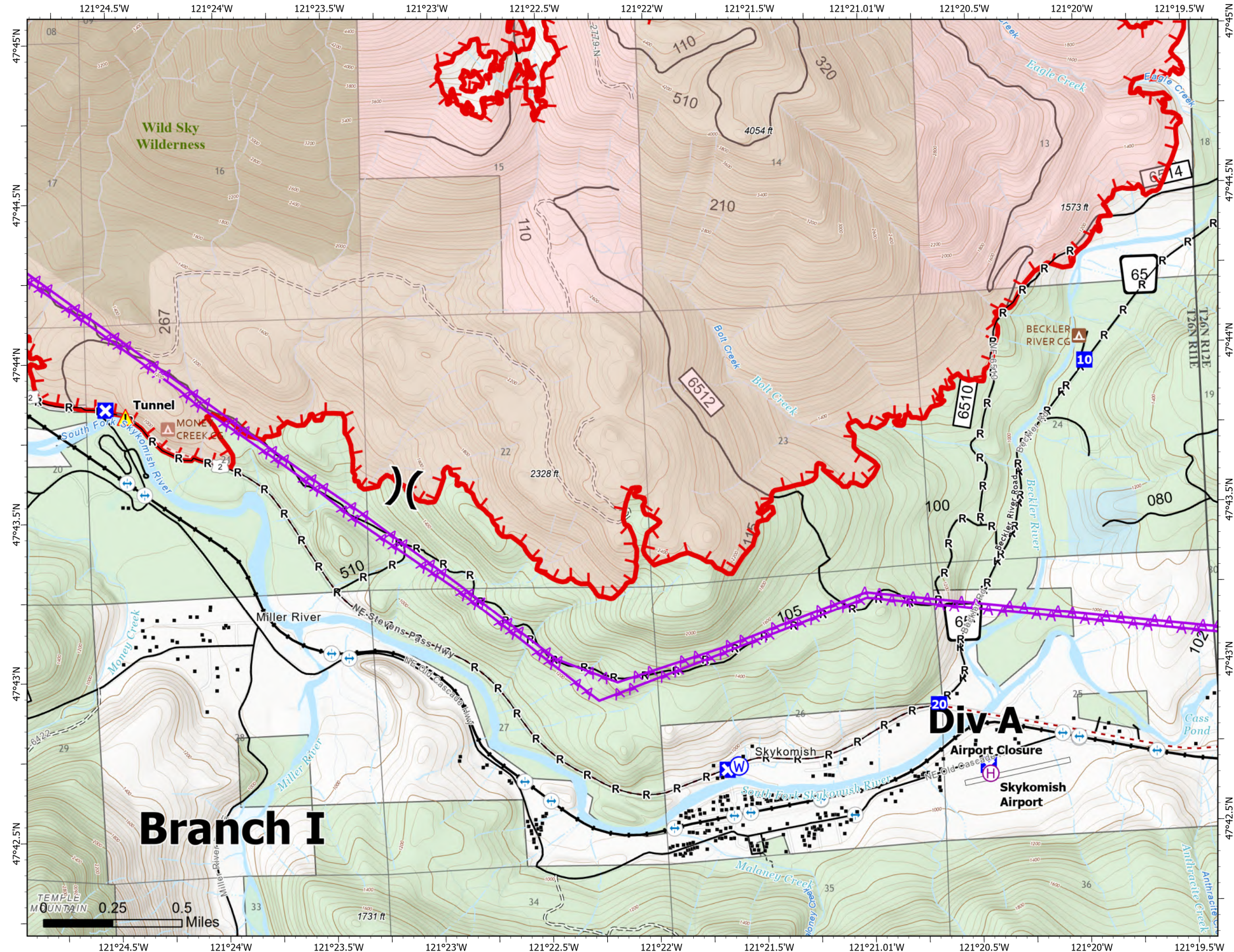


Page 12 of 14

- Helibase
- Division Break
- Drop Point
- Closure
- Tunnel
- Water Source
- structures
- Completed Road as Line
- Other
- Aerial Hazard
- Uncontained
- Trail
- Runway
- State
- US Forest Service (USFS)
- Private
- Campground
- Bridges
- Railroads
- Open Roads
- Closed Roads
- Decommissioned Roads
- Trail
- Runway
- county
- Wilderness



Map updated:
9/18/2022 2036



Branch I



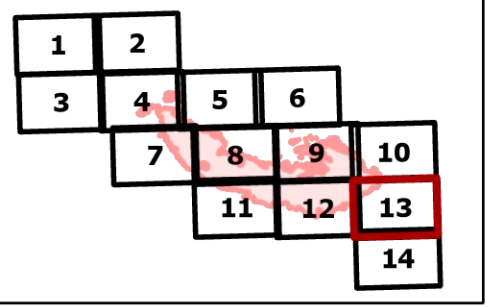
IAP

Bolt Creek

WA-NWS-000150

09/19/2022

10,220 acres at 09/16/2022 @2022

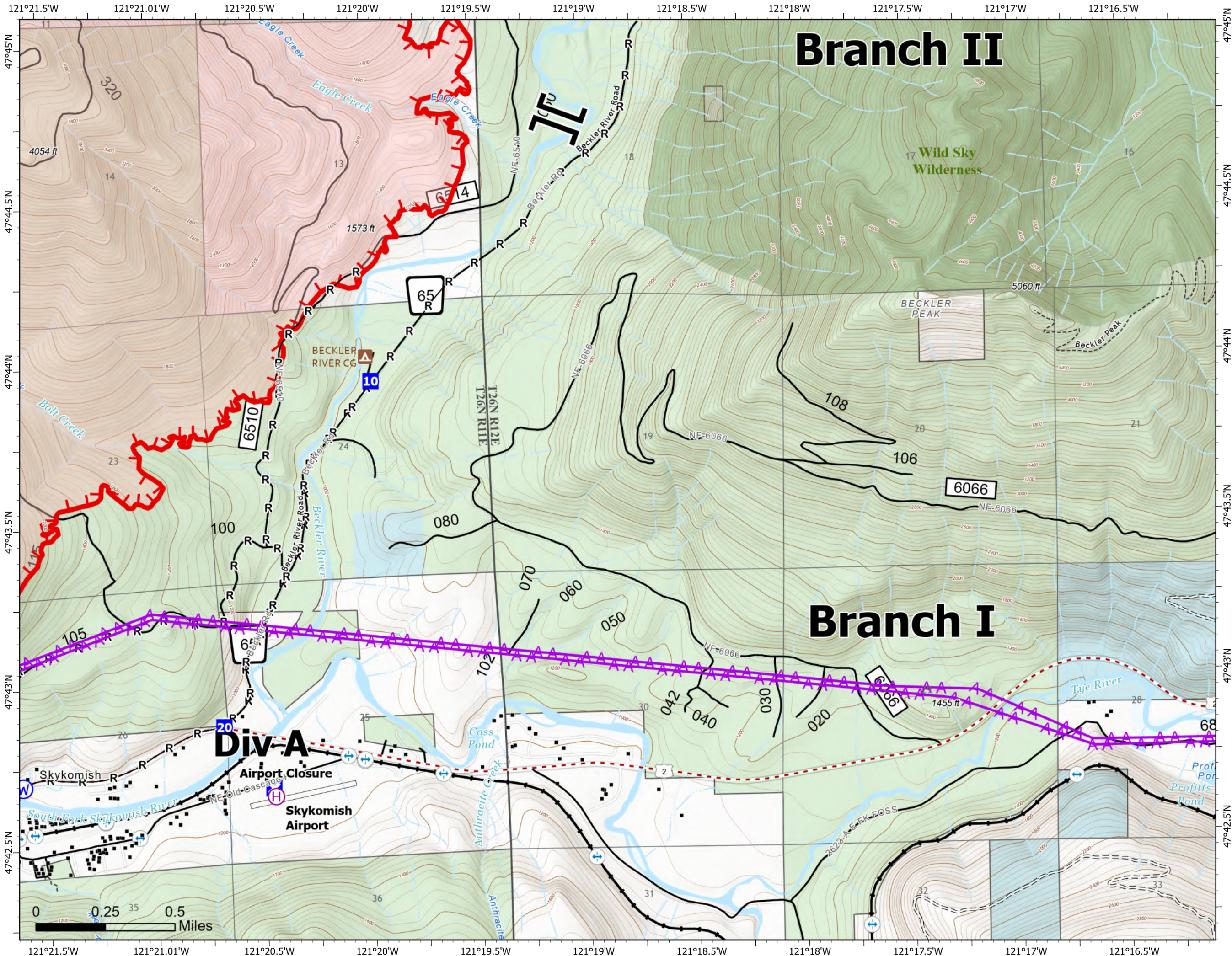


Page 13 of 14

- Helibase
- Branch Break
- Drop Point
- Closure
- Water Source
- structures
- Completed Road as Line
- Aerial Hazard
- Uncontained
- Trail
- Runway
- State
- US Forest Service (USFS)
- Private
- Campground
- Bridges
- Railroads
- Open Roads
- Closed Roads
- Decommissioned Roads
- Trail
- Runway
- county
- Wilderness



Map updated:
9/18/2022 2036



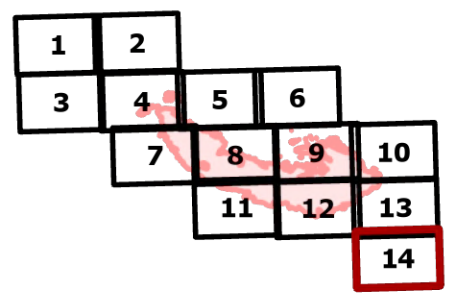
IAP

Bolt Creek

WA-NWS-000150

09/19/2022

10,220 acres at 09/16/2022 @2022

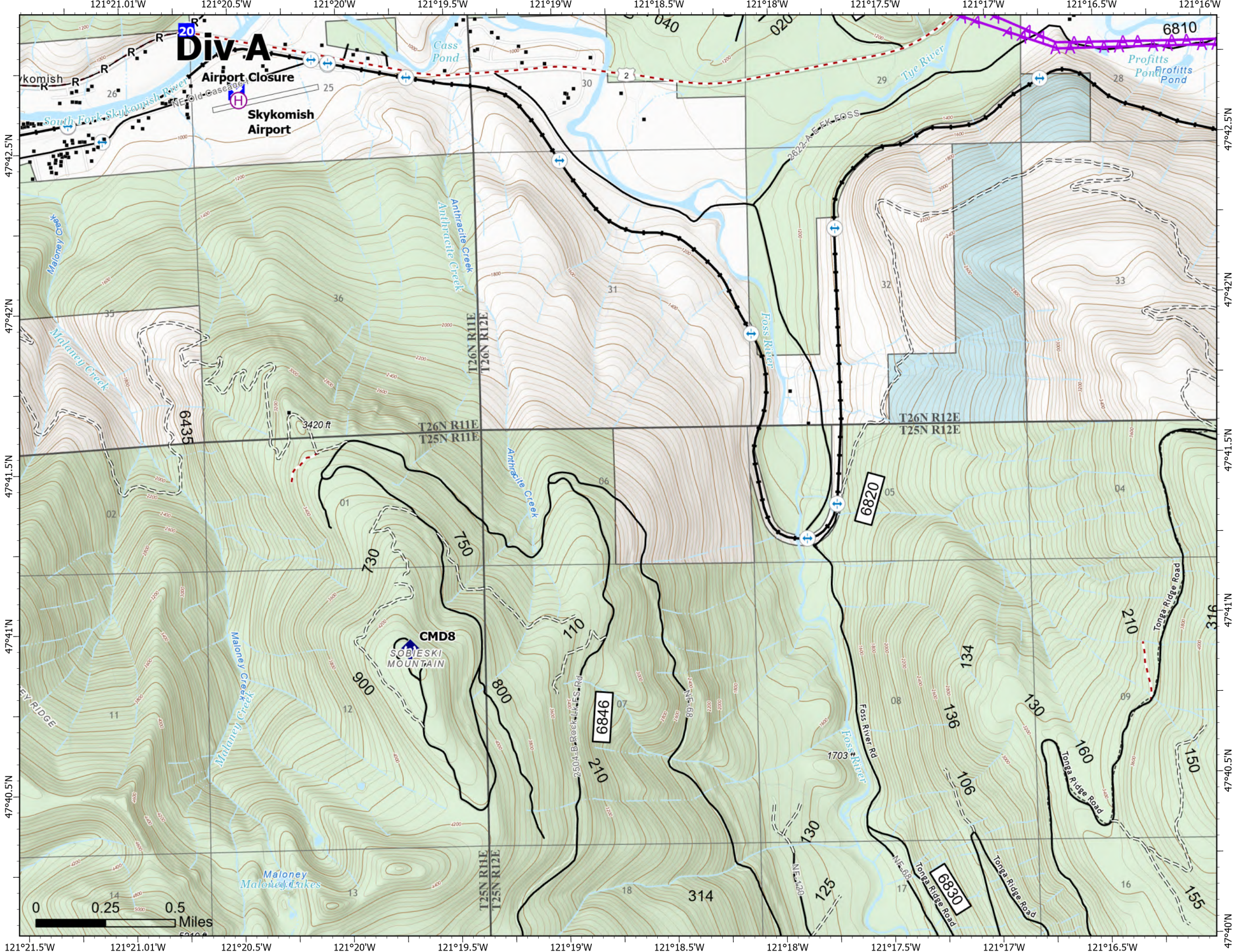


Page 14 of 14

- Helibase
- Drop Point
- Closure
- Repeater
- structures
- Completed Road as Line
- Aerial Hazard
- Trail
- Runway
- State
- US Forest Service (USFS)
- Private
- Bridges
- Railroads
- Open Roads
- Closed Roads
- Decommissioned Roads
- Decommissioned Roads
- Trail
- Runway
- county



Map updated:
9/18/2022 2037



Transportation

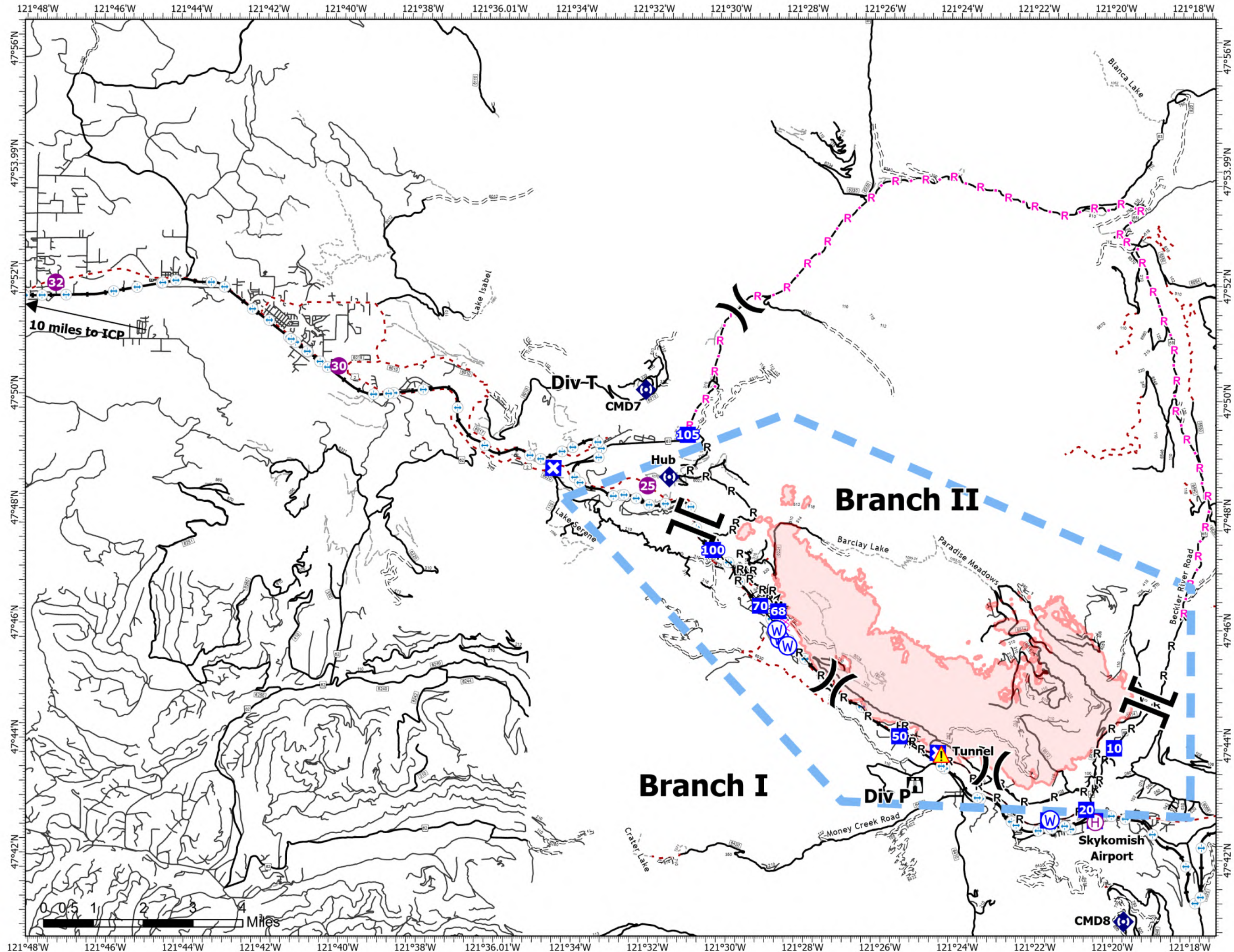
Bolt Creek

WA-NWS-000150

09/19/2022

10,220 acres at 09/16/2022 @2022

- Helispot
- ⊕ Helibase
- X Division Break
- || Branch Break
- Drop Point
- ⊠ Closure
- ⊞ Lookout
- ⊙ Fire Station
- ⊕ Bridge
- ◆ Repeater
- ▲ Tunnel
- ⊕ Water Source
- Completed Burnout
- X Completed Dozer Line
- M Completed Fuel Break
- H Completed Hand Line
- M Completed Mixed Construction Line
- R Completed Road as Line
- Planned Dozer Line
- R Planned Road as Line
- Other
- Temporary Flight Restriction
- Secondary Hwy
- Local Road
- 4WD
- - - Trail
- Runway
- ⊕ Bridges
- Railroads
- Open Roads
- = Closed Roads
- - - Decommissioned Roads
- - - Decommissioned Roads





Map Updated
9/18/2022 2101



