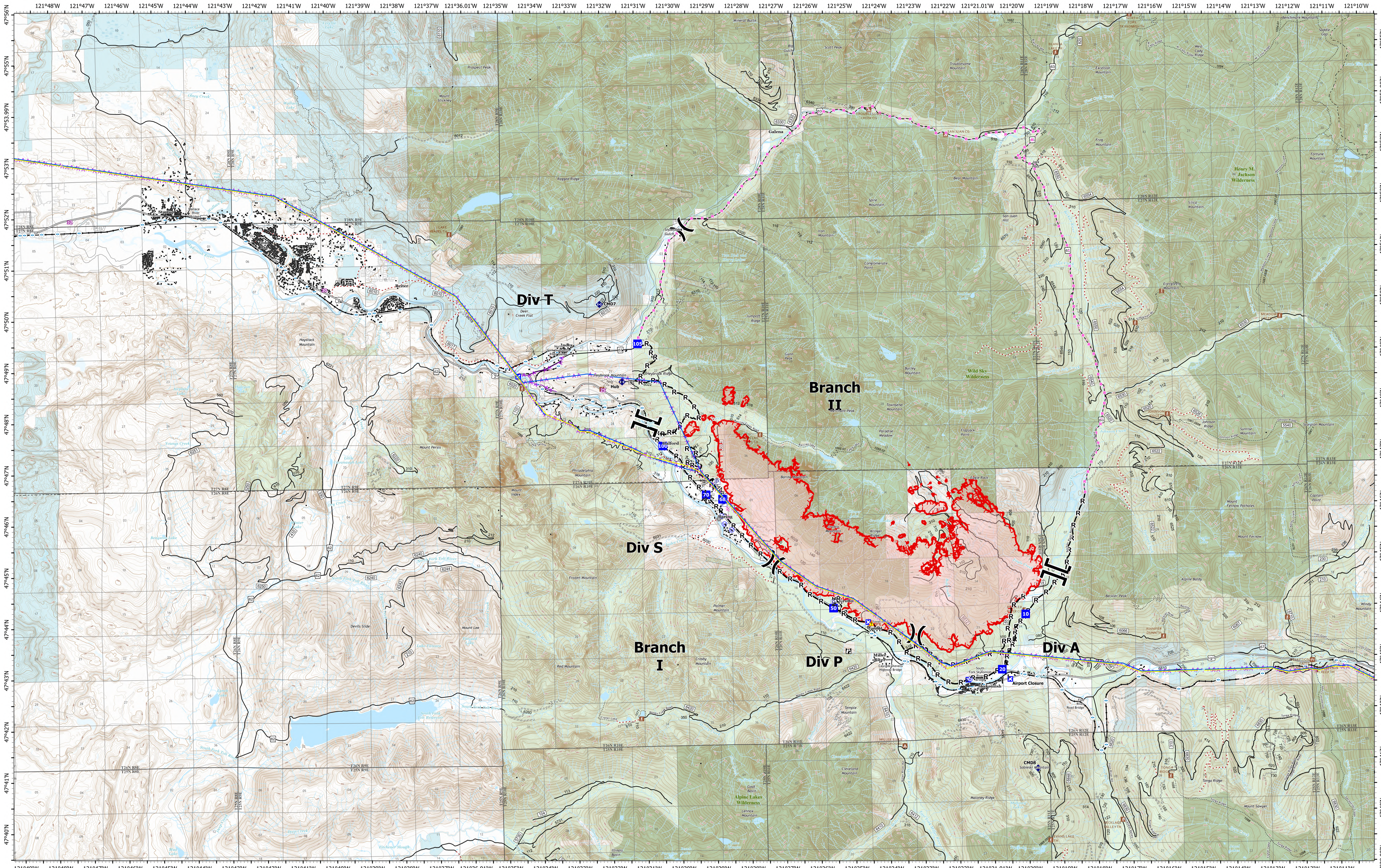


# Operations



**Bolt Creek**  
**WA-NWS-000150**  
**09/19/2022**

10,220 acres at 09/16/2022 @2022

9/18/2022 2123

- |   |   |   |
|---|---|---|
| <ul style="list-style-type: none"> <li> Pump</li> <li> Water Tank</li> <li> Division Break</li> <li> Branch Break</li> <li> Drop Point</li> <li> Closure</li> <li> Lookout</li> <li> Fire Station</li> <li> Bridge</li> <li> Repeater</li> <li> Hazard</li> <li> Water Source</li> <li> 345kv High Voltage</li> <li> 345kv High Voltage</li> <li> Completed Burnout</li> <li> Completed Dozer Line</li> <li> Completed Fuel Break</li> <li> Completed Hand Line</li> <li> Completed Mixed Construction Line</li> <li> Completed Road as Line</li> <li> Planned Dozer Line</li> <li> Planned Road as Line</li> <li> Other</li> <li> Aerial Hazard</li> </ul> | <ul style="list-style-type: none"> <li> Uncontained</li> <li> Bridges</li> <li> Campground</li> <li> Day Use/Picnic</li> <li> Lookout/Cabin</li> <li> Trailhead</li> <li> Railroads</li> <li> Major Highways</li> <li> Forest Service Open Roads</li> <li> Forest Service Closed Roads</li> <li> Forest Service Decommissioned Roads</li> <li> Bridges</li> <li> Railroads</li> <li> Trail</li> <li> County</li> <li> Wilderness</li> </ul> | <ul style="list-style-type: none"> <li> Bureau of Land Management (BLM)</li> <li> State</li> <li> US Forest Service (USFS)</li> <li> Private</li> </ul> |
|---|---|---|

