

# IAP

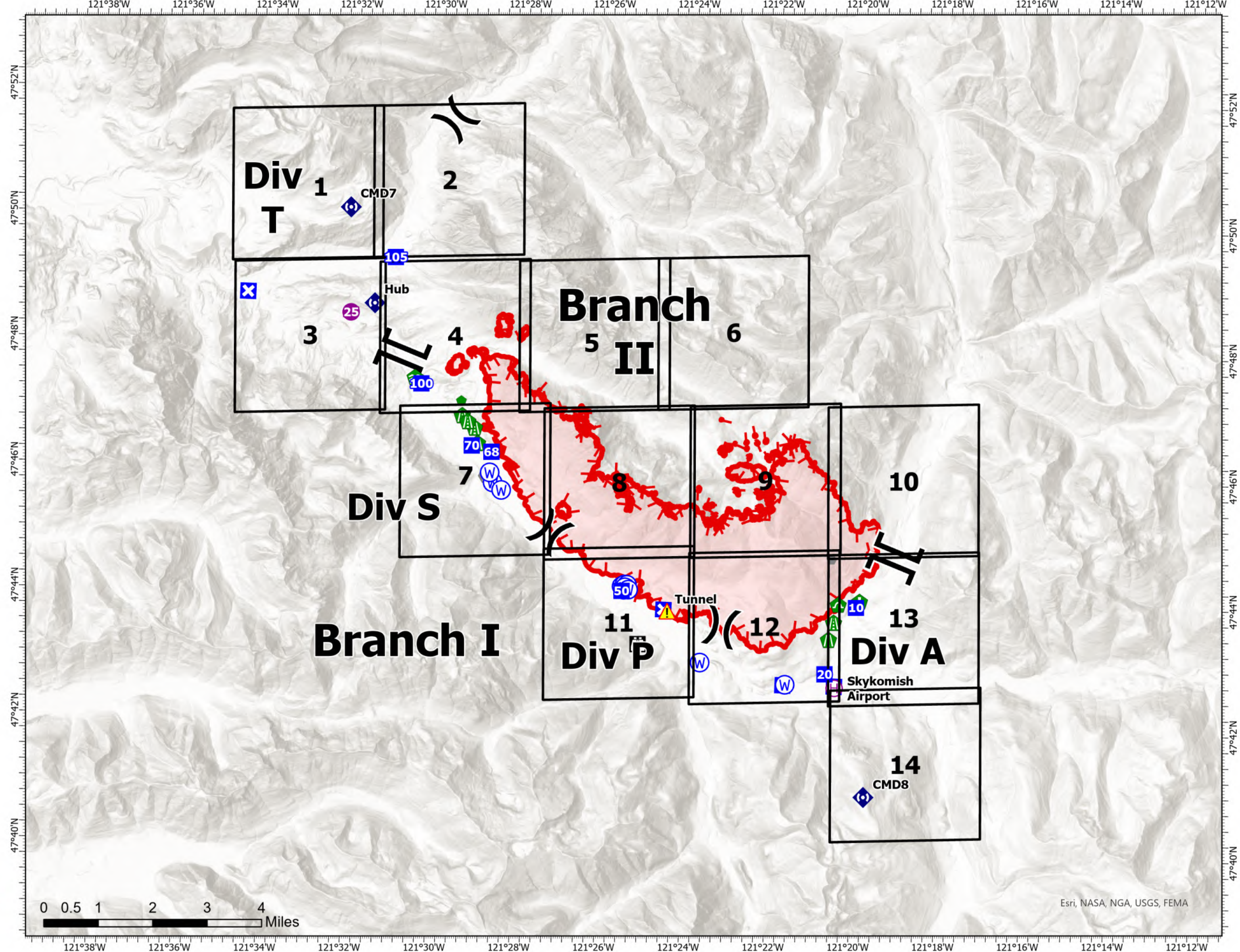
## Bolt Creek

### WA-NWS-000150

#### 09/20/2022

10,095 acres at 09/19/2022 @1700

- Helispot
- H Helibase
- ) Division Break
- | Branch Break
- Drop Point
- X Closure
- ⌂ Lookout
- Other
- 🚒 Fire Station
- ⚖ Bridge
- 🌿 Stream Crossing
- 🛠 Road Repair
- 📍 Resource Location
- 🔧 Repair Point
- 🏠 Culvert
- 📶 Repeater
- ⚠ Tunnel
- W Water Source
- ┃ Uncontained



Map updated:  
9/19/2022 2130



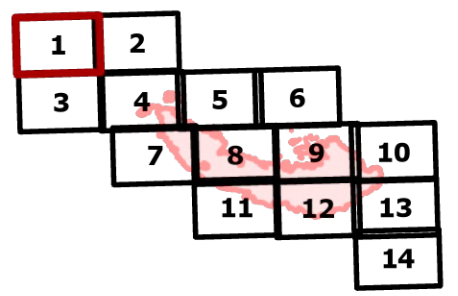
# IAP

## Bolt Creek

### WA-NWS-000150

#### 09/20/2022

10,095 acres at 09/19/2022 @1700

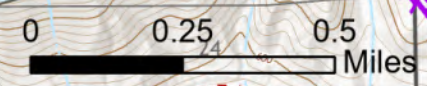
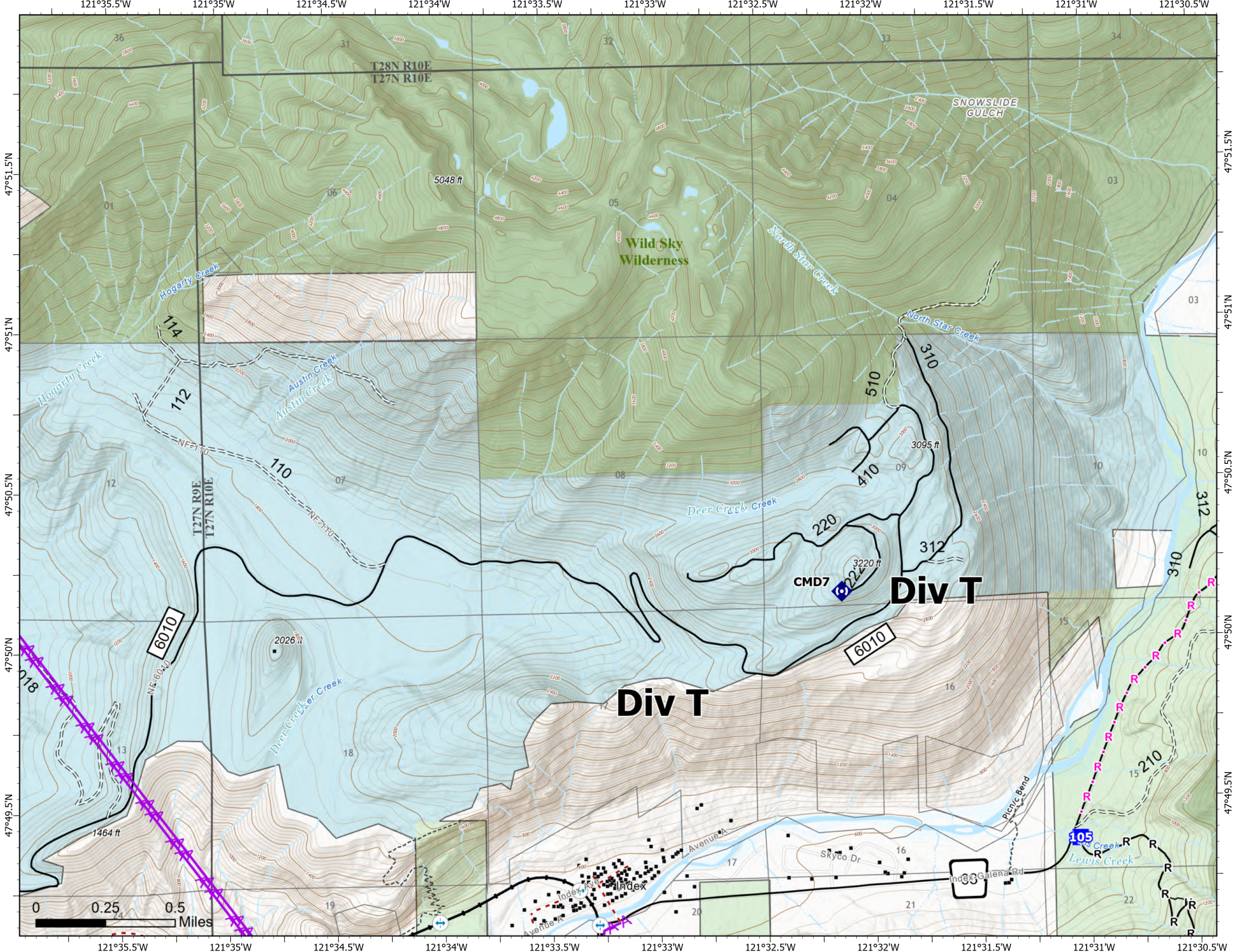


Page 1 of 14

- Drop Point
- Repeater
- structures
- Completed Hand Line
- Completed Road as Line
- Planned Road as Line
- Aerial Hazard
- Trail
- State
- US Forest Service (USFS)
- Private
- Undetermined
- Bridges
- Railroads
- Open Roads
- Closed Roads
- Decommissioned Roads
- Trail
- county
- Wilderness



Map updated:  
9/19/2022 2134



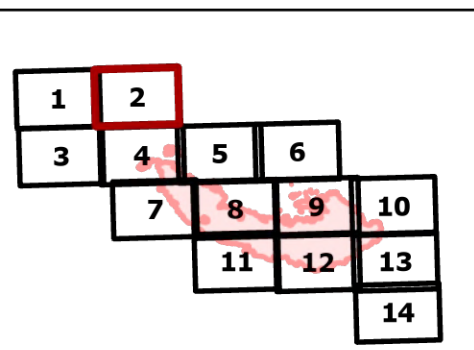
# IAP

## Bolt Creek

### WA-NWS-000150

#### 09/20/2022

10,095 acres at 09/19/2022 @1700

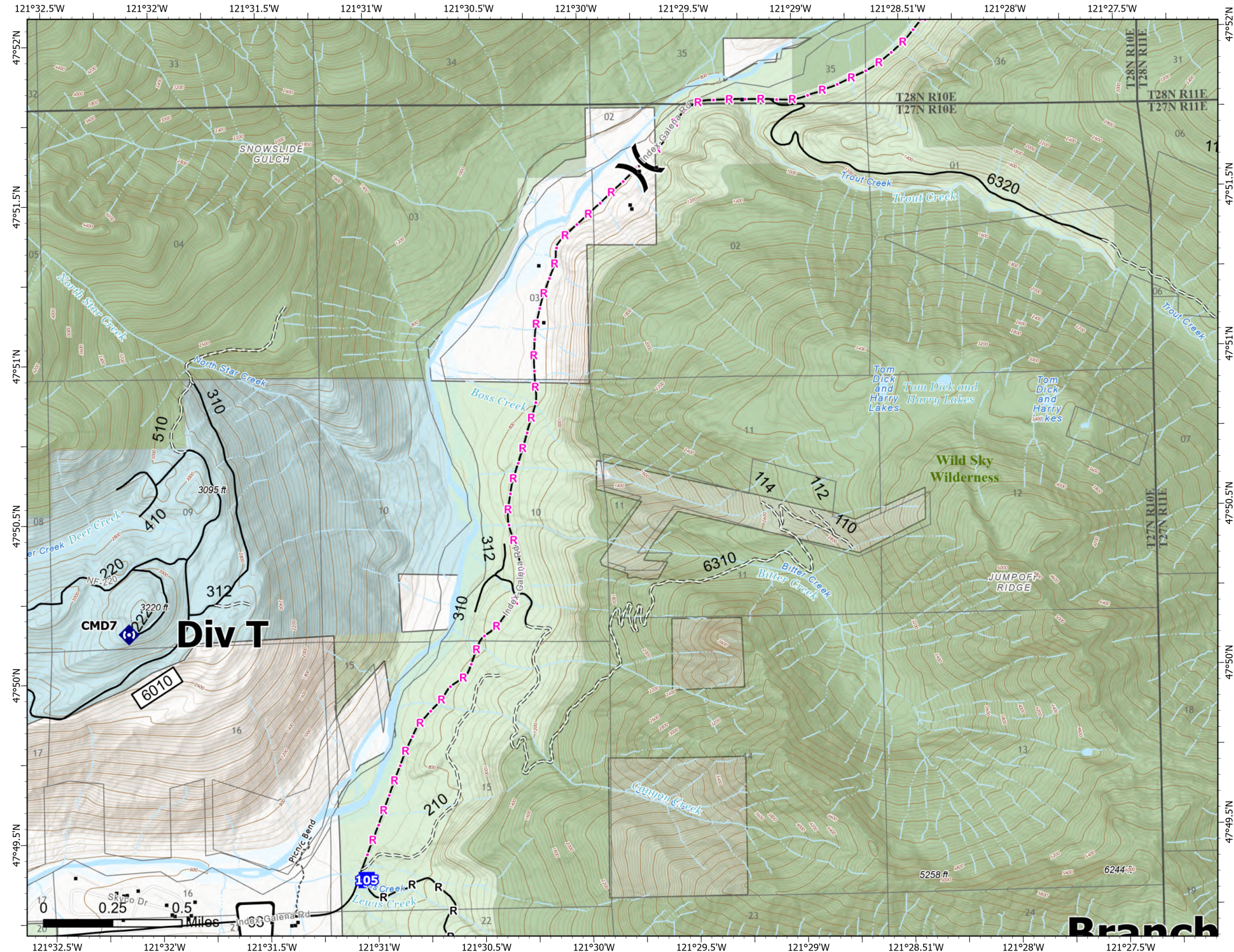


Page 2 of 14

- (X) Division Break
- Drop Point
- Ⓜ Repeater
- structures
- Completed Hand Line
- Completed Road as Line
- Planned Road as Line
- Trail
- State
- US Forest Service (USFS)
- Private
- Undetermined
- Open Roads
- Closed Roads
- Trail
- county
- Wilderness



Map updated:  
9/19/2022 2134



Branch

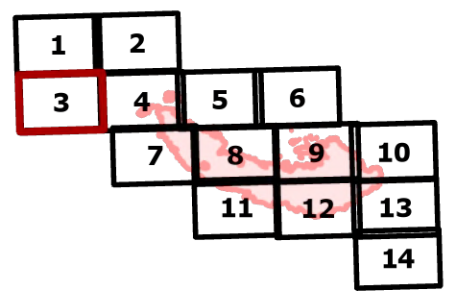
# IAP

## Bolt Creek

### WA-NWS-000150

#### 09/20/2022

10,095 acres at 09/19/2022 @1700

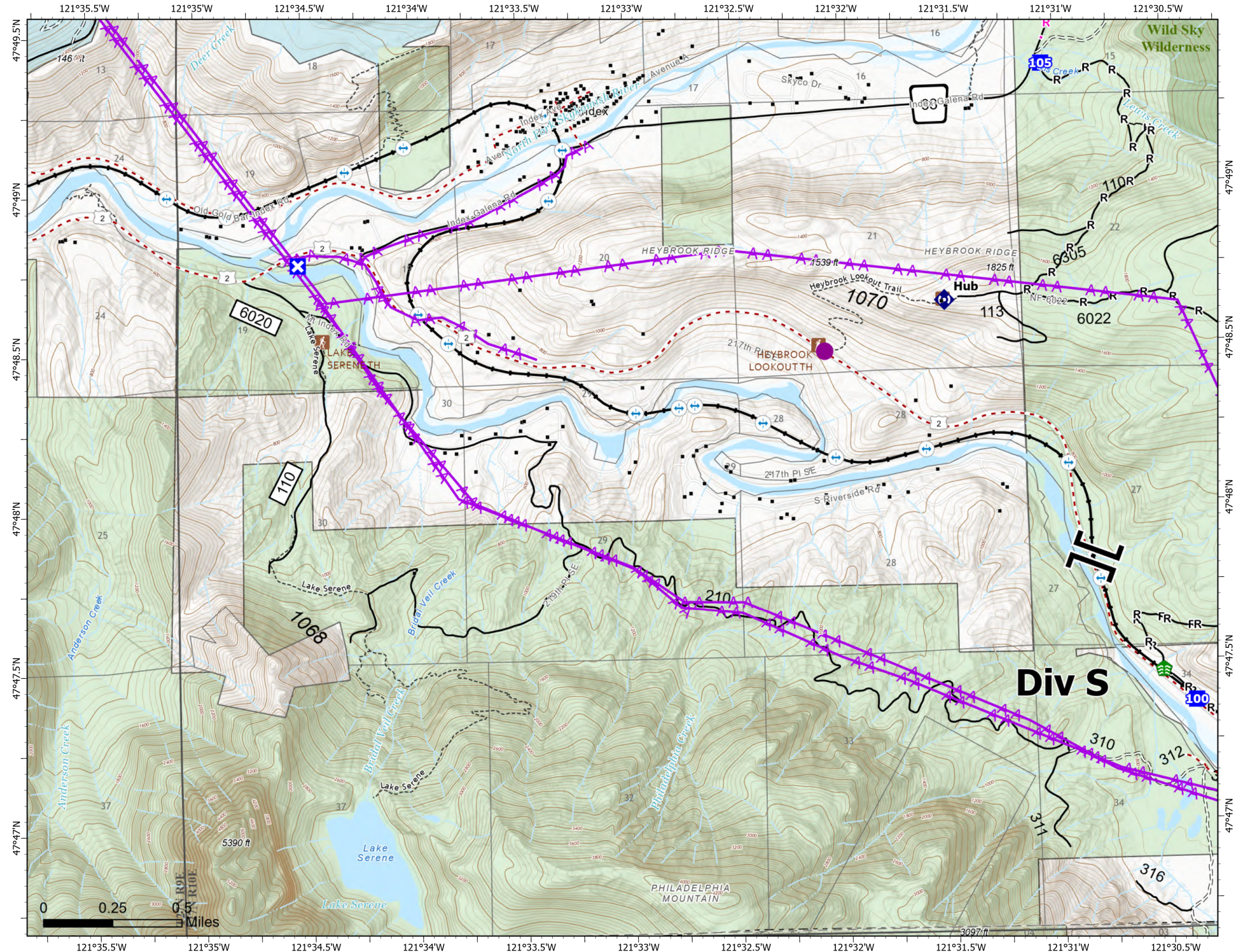


Page 3 of 14

- Helispot
- Branch Break
- Drop Point
- Closure
- Stream Crossing
- Repeater
- structures
- Completed Hand Line
- Completed Road as Line
- Planned Road as Line
- Aerial Hazard
- Trail
- State
- US Forest Service (USFS)
- Private
- Undetermined
- LOOKOUT/CABIN
- TRAILHEAD
- Bridges
- Railroads
- Open Roads
- Closed Roads
- Decommissioned Roads
- Trail
- county
- Wilderness



Map updated:  
9/19/2022 2134



**Div S**

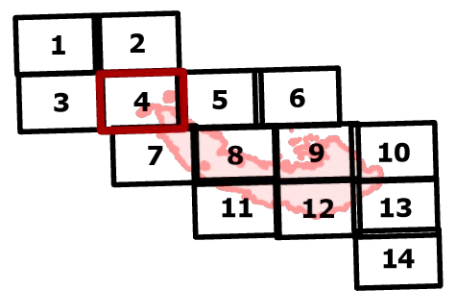
# IAP

## Bolt Creek

### WA-NWS-000150

#### 09/20/2022

10,095 acres at 09/19/2022 @1700

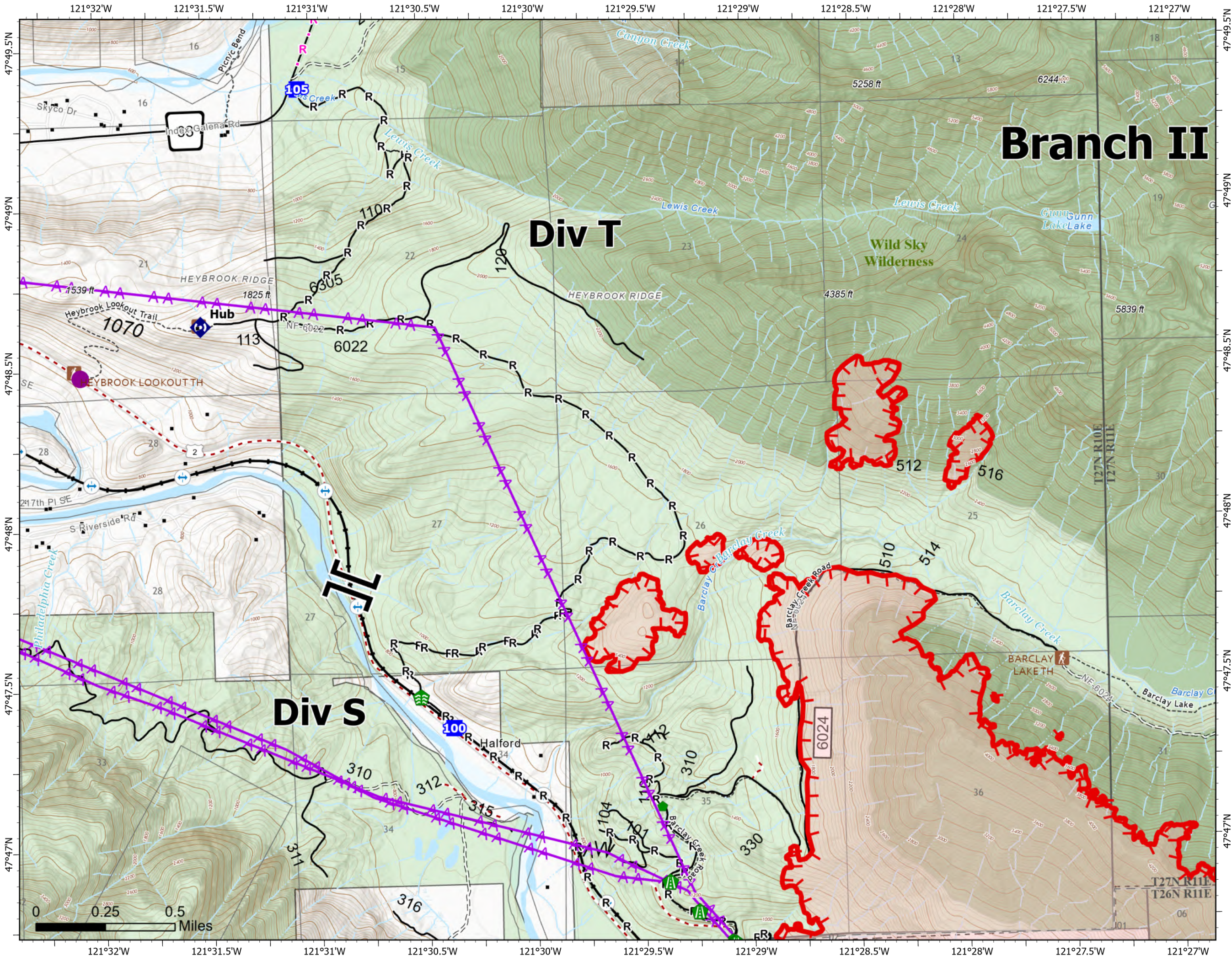


Page 4 of 14

- |                        |                          |
|------------------------|--------------------------|
| Helispot               | Trail                    |
| Branch Break           | US Forest Service (USFS) |
| Drop Point             | Private                  |
| Stream Crossing        | Undetermined             |
| Road Repair            | LOOKOUT/CABIN            |
| Repair Point           | TRAILHEAD                |
| Repeater               | Bridges                  |
| structures             | Railroads                |
| Completed Dozer Line   | Open Roads               |
| Completed Fuel Break   | Closed Roads             |
| Completed Hand Line    | Decommissioned Roads     |
| Completed Road as Line | Decommissioned Roads     |
| Planned Road as Line   | Trail                    |
| Aerial Hazard          | county                   |
| Uncontained            | Wilderness               |



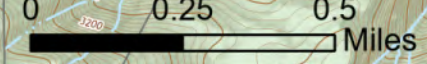
Map updated:  
9/19/2022 2135



# Branch II

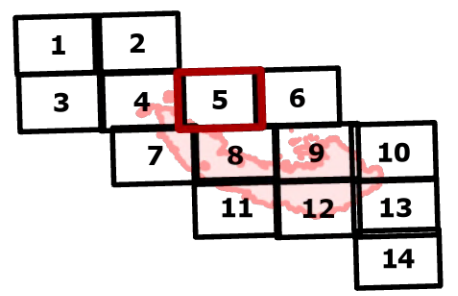
## Div T

## Div S



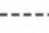
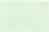


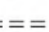


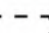



**IAP**  
**Bolt Creek**  
**WA-NWS-000150**  
**09/20/2022**

10,095 acres at 09/19/2022 @1700

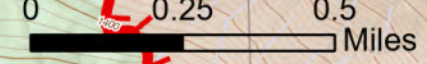
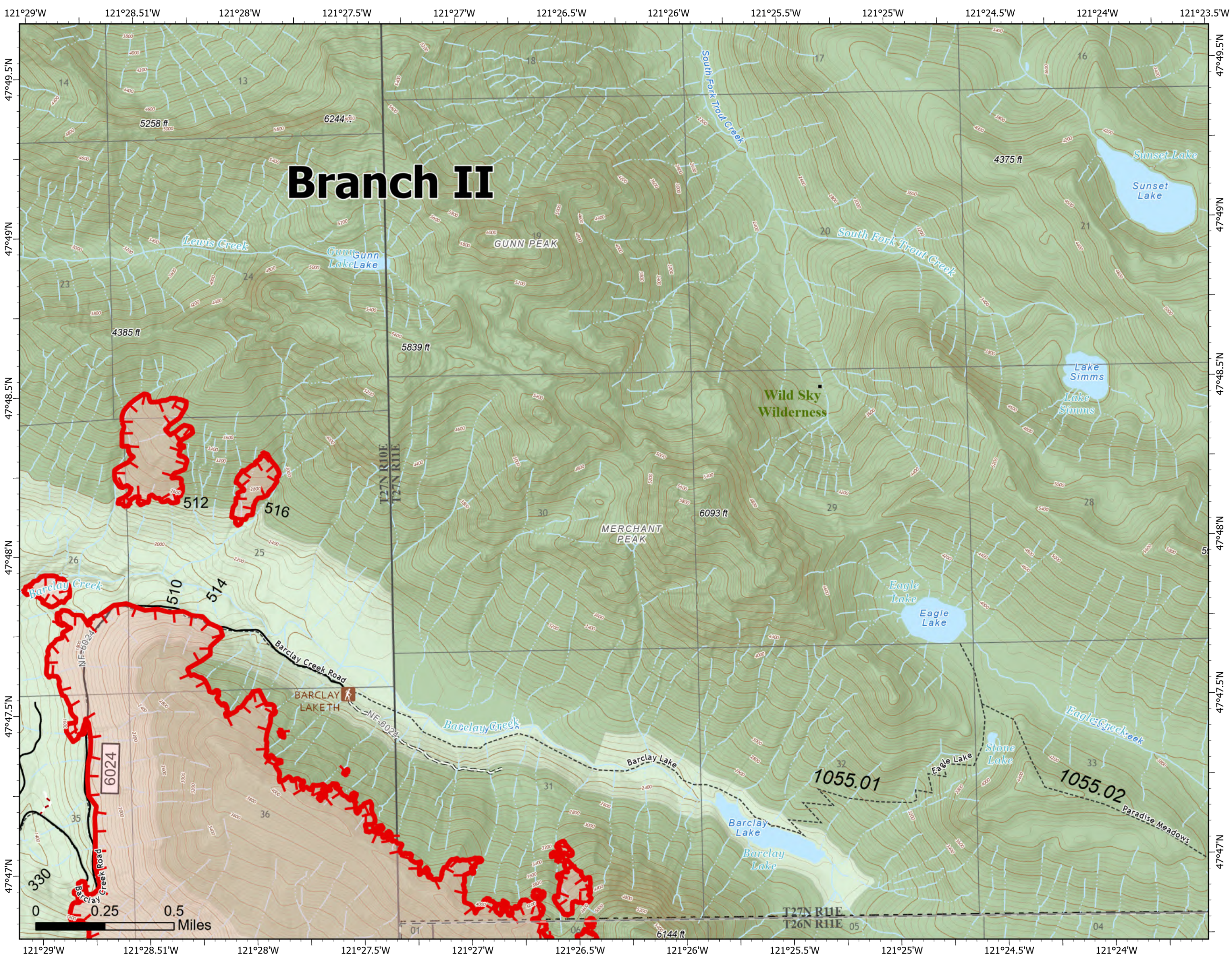


Page 5 of 14

-  structures
-  Uncontained
-  Trail
-  US Forest Service (USFS)
-  TRAILHEAD
-  Open Roads
-  Closed Roads
-  Decommissioned Roads
-  Trail
-  county
-  Wilderness



Map updated:  
9/19/2022 2135



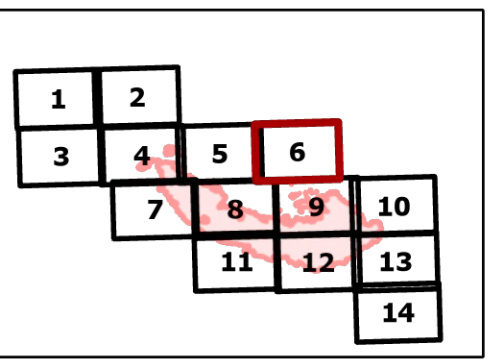
# IAP

## Bolt Creek






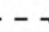


### WA-NWS-000150

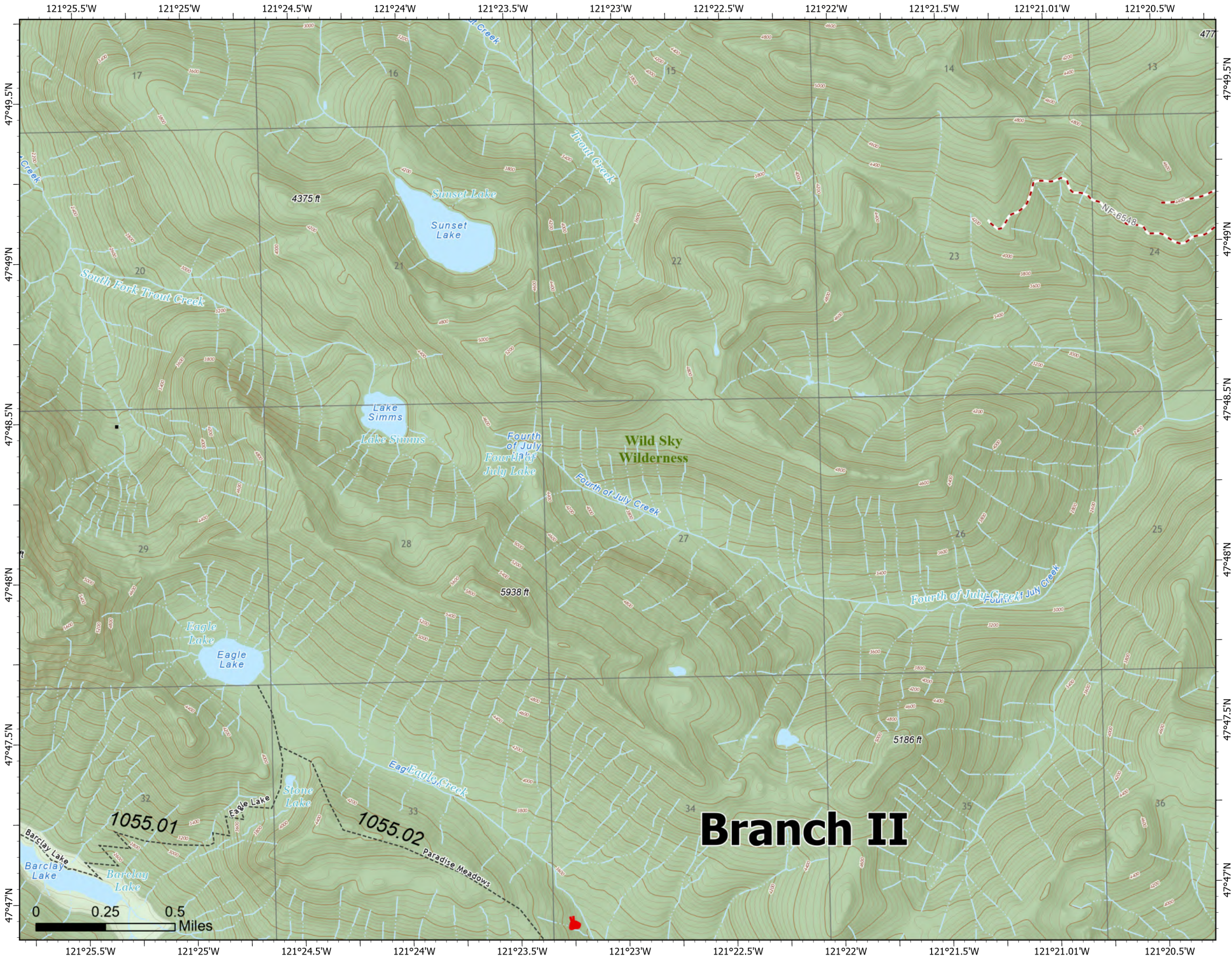
#### 09/20/2022

10,095 acres at 09/19/2022 @1700



Page 6 of 14

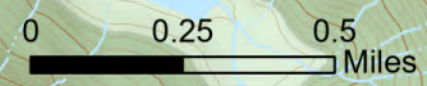
-  structures
-  Uncontained
-  Trail
-  US Forest Service (USFS)
-  Decommissioned Roads
-  Trail
-  county
-  Wilderness



# Branch II



Map updated:  
9/19/2022 2135



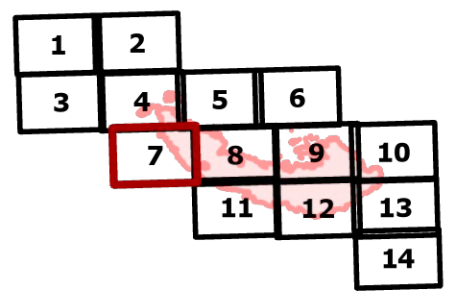
# IAP

## Bolt Creek

### WA-NWS-000150

#### 09/20/2022

10,095 acres at 09/19/2022 @1700

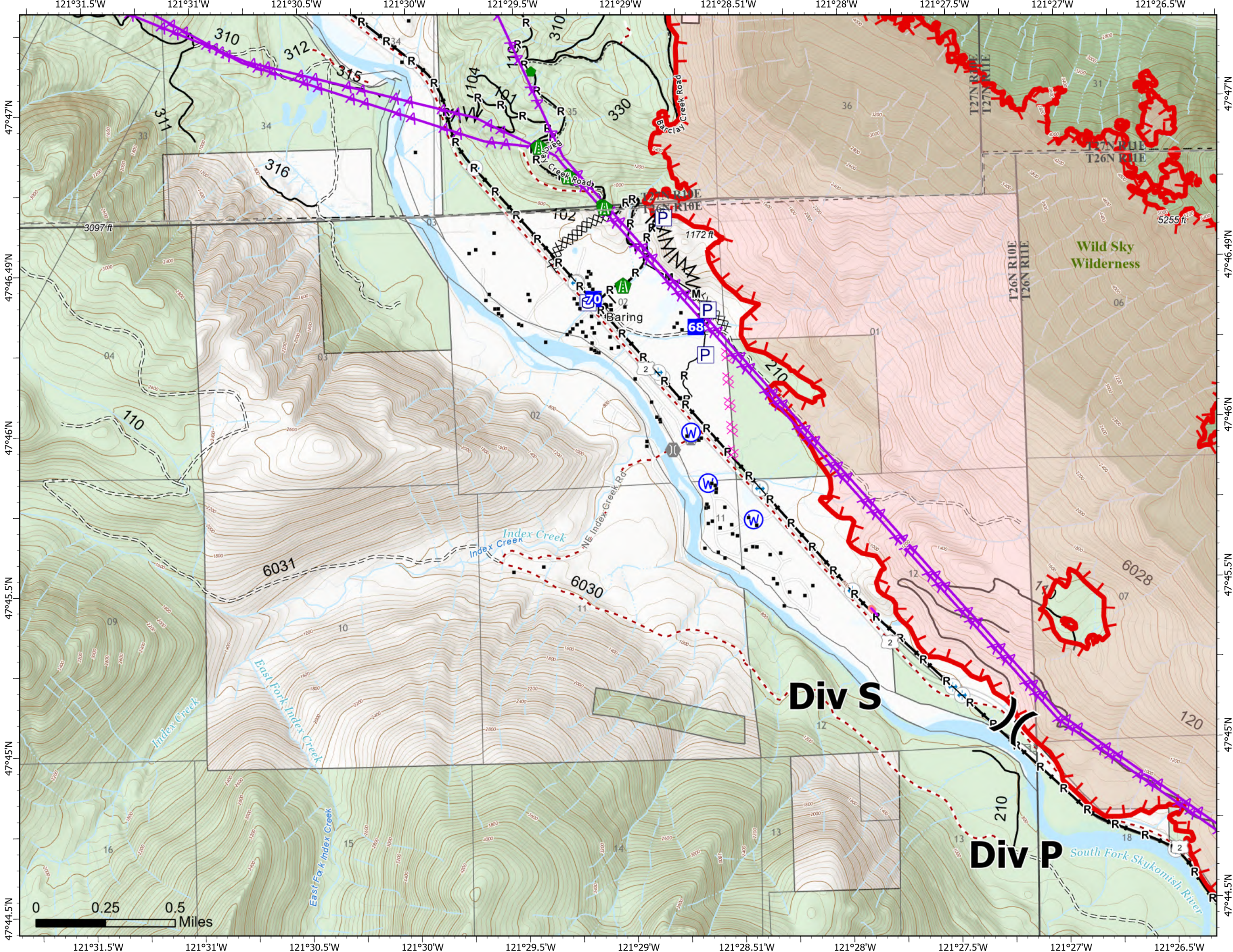


Page 7 of 14

- X Division Break
- Drop Point
- Fire Station
- ⌒ Bridge
- 🛠 Road Repair
- 🔧 Repair Point
- 🌊 Water Source
- structures
- ⊡ Pump
- ⊡ Water Tank
- Completed Burnout
- ⊗ Completed Dozer Line
- ⊗ Completed Fuel Break
- M Completed Mixed Construction Line
- R Completed Road as Line
- Planned Dozer Line
- Aerial Hazard
- 🔴 Retardant Drop
- 🔴 Uncontained
- ⋯ Trail
- 🌲 US Forest Service (USFS)
- 🏠 Private
- 🌉 Bridges
- 🚂 Railroads
- Open Roads
- Closed Roads
- Decommissioned Roads
- Decommissioned Roads
- ⋯ Trail
- 🗺 county
- 🌲 Wilderness



Map updated:  
9/19/2022 2136





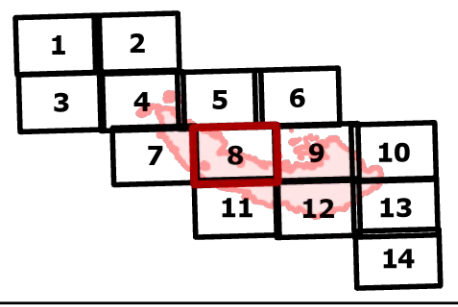
# IAP

## Bolt Creek

### WA-NWS-000150

#### 09/20/2022

10,095 acres at 09/19/2022 @1700

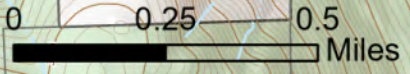
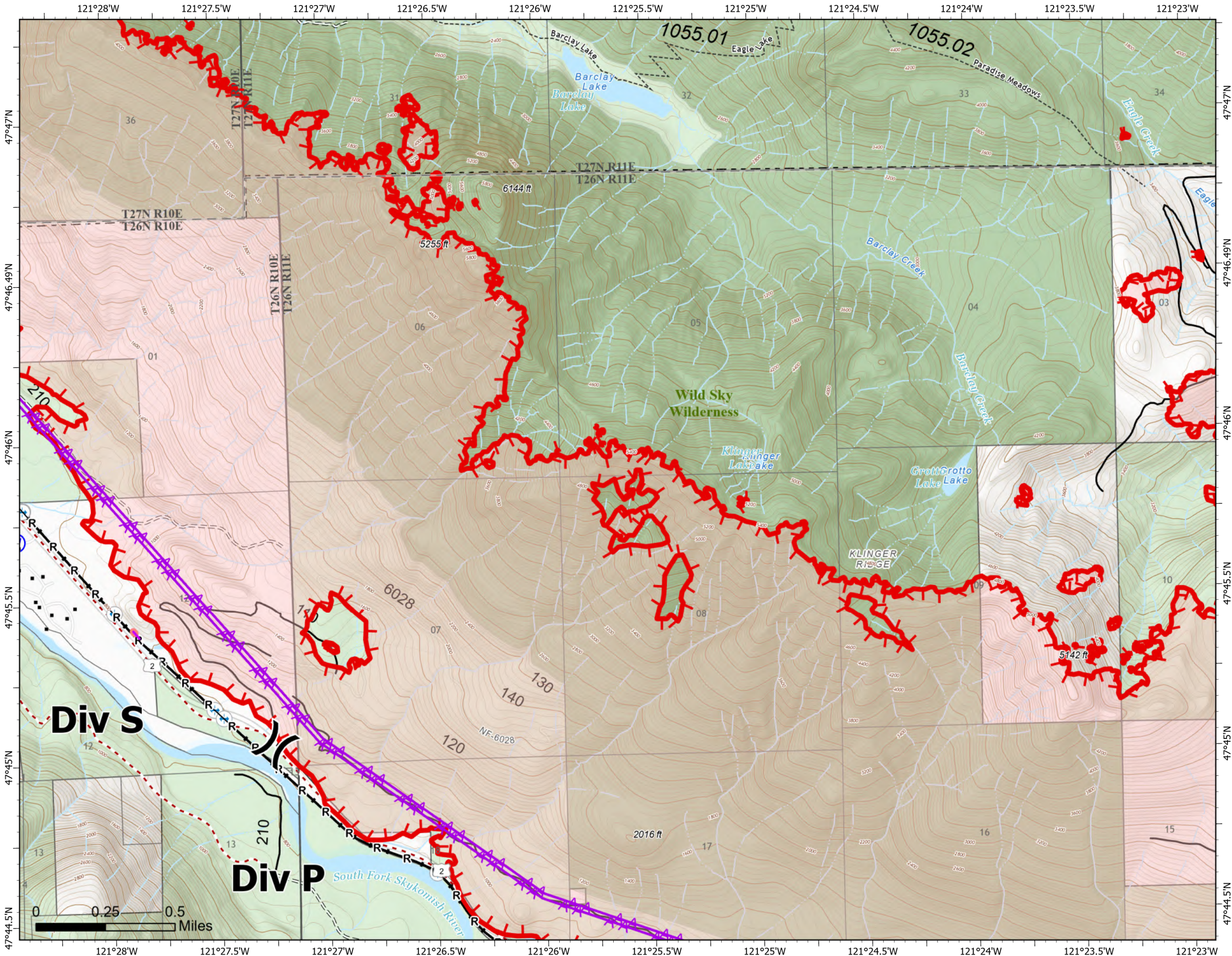


Page 8 of 14

- (X) Division Break
- (W) Water Source
- structures
- R— Completed Road as Line
- AA Aerial Hazard
- Retardant Drop
- Uncontained
- Trail
- US Forest Service (USFS)
- Private
- Bridges
- Railroads
- Open Roads
- Closed Roads
- Decommissioned Roads
- Trail
- county
- Wilderness

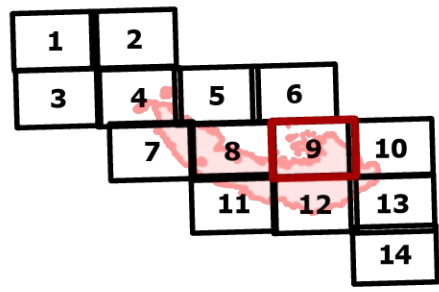


Map updated:  
9/19/2022 2136



**IAP**  
**Bolt Creek**  
**WA-NWS-000150**  
**09/20/2022**

10,095 acres at 09/19/2022 @1700

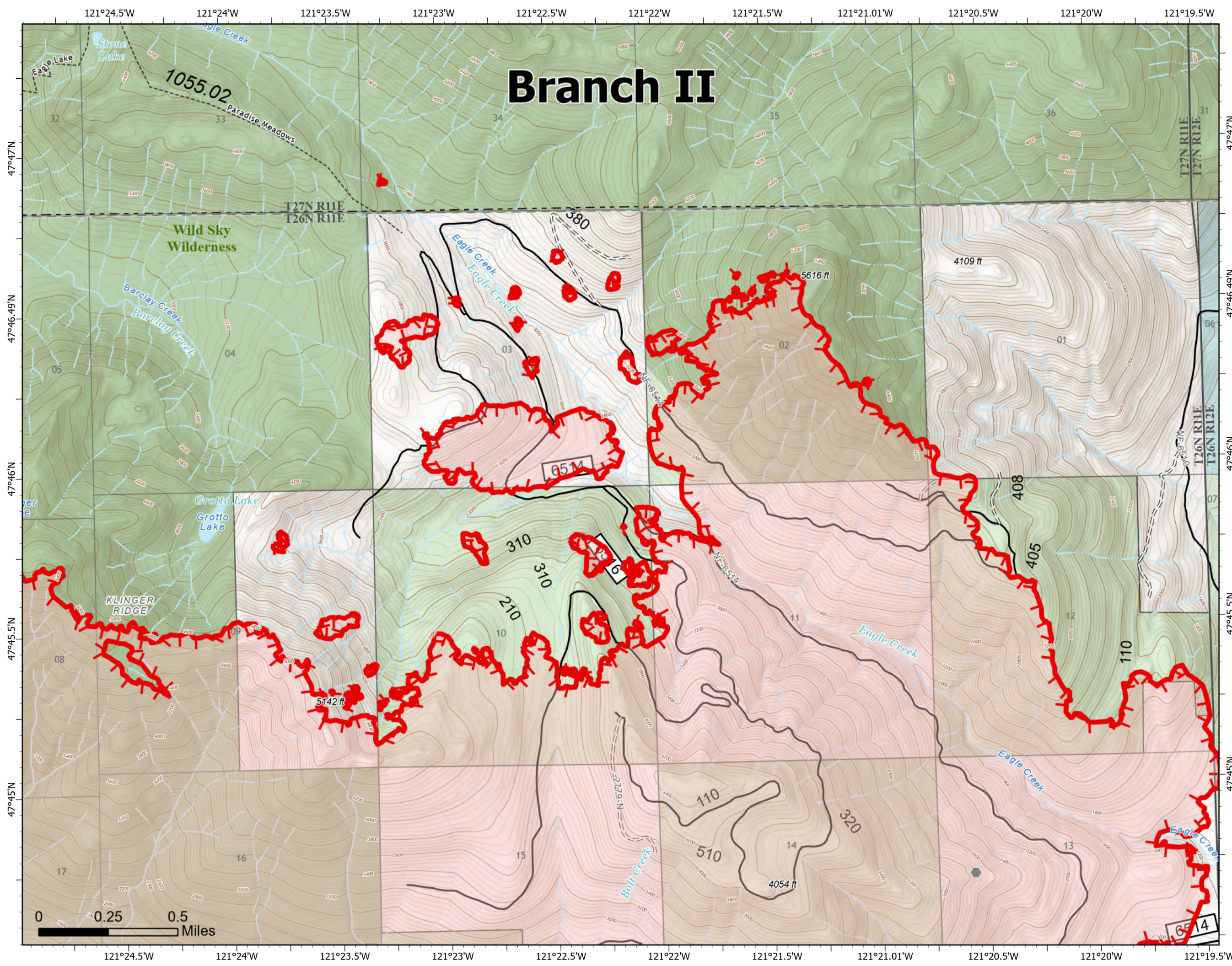


Page 9 of 14

- Other
- Uncontained
- Trail
- State
- US Forest Service (USFS)
- Private
- Open Roads
- Closed Roads
- Trail
- county
- Wilderness



Map updated:  
9/19/2022 2136



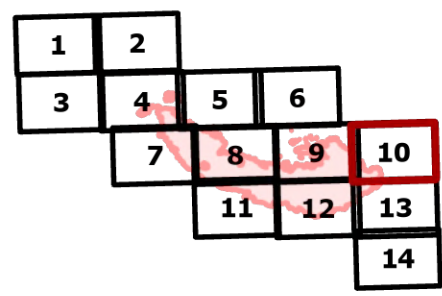
# IAP

## Bolt Creek

### WA-NWS-000150

#### 09/20/2022

10,095 acres at 09/19/2022 @1700

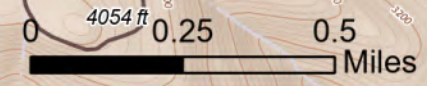
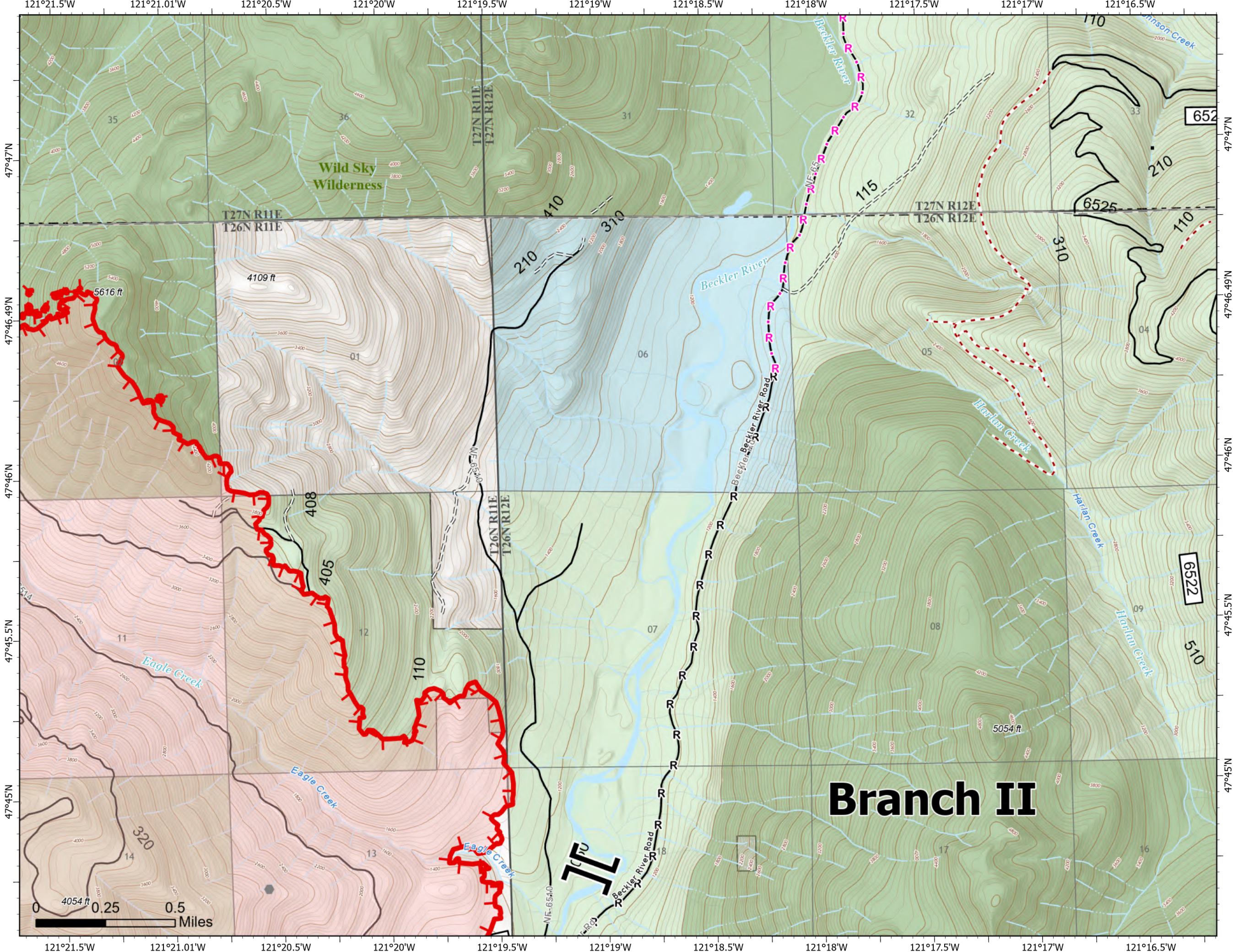


Page 10 of 14

- Branch Break
- Other
- structures
- Completed Road as Line
- Planned Road as Line
- Uncontained
- Trail
- State
- US Forest Service (USFS)
- Private
- Open Roads
- Closed Roads
- Decommissioned Roads
- Trail
- county
- Wilderness



Map updated:  
9/19/2022 2137



# Branch II

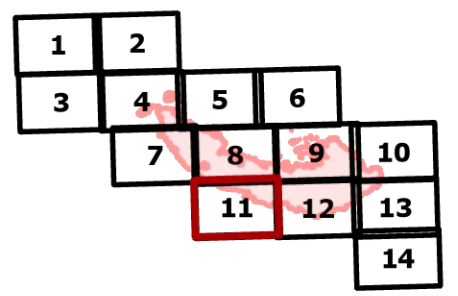
# IAP

## Bolt Creek

### WA-NWS-000150

#### 09/20/2022

10,095 acres at 09/19/2022 @1700

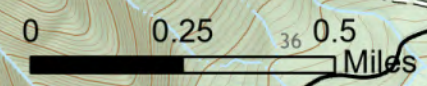
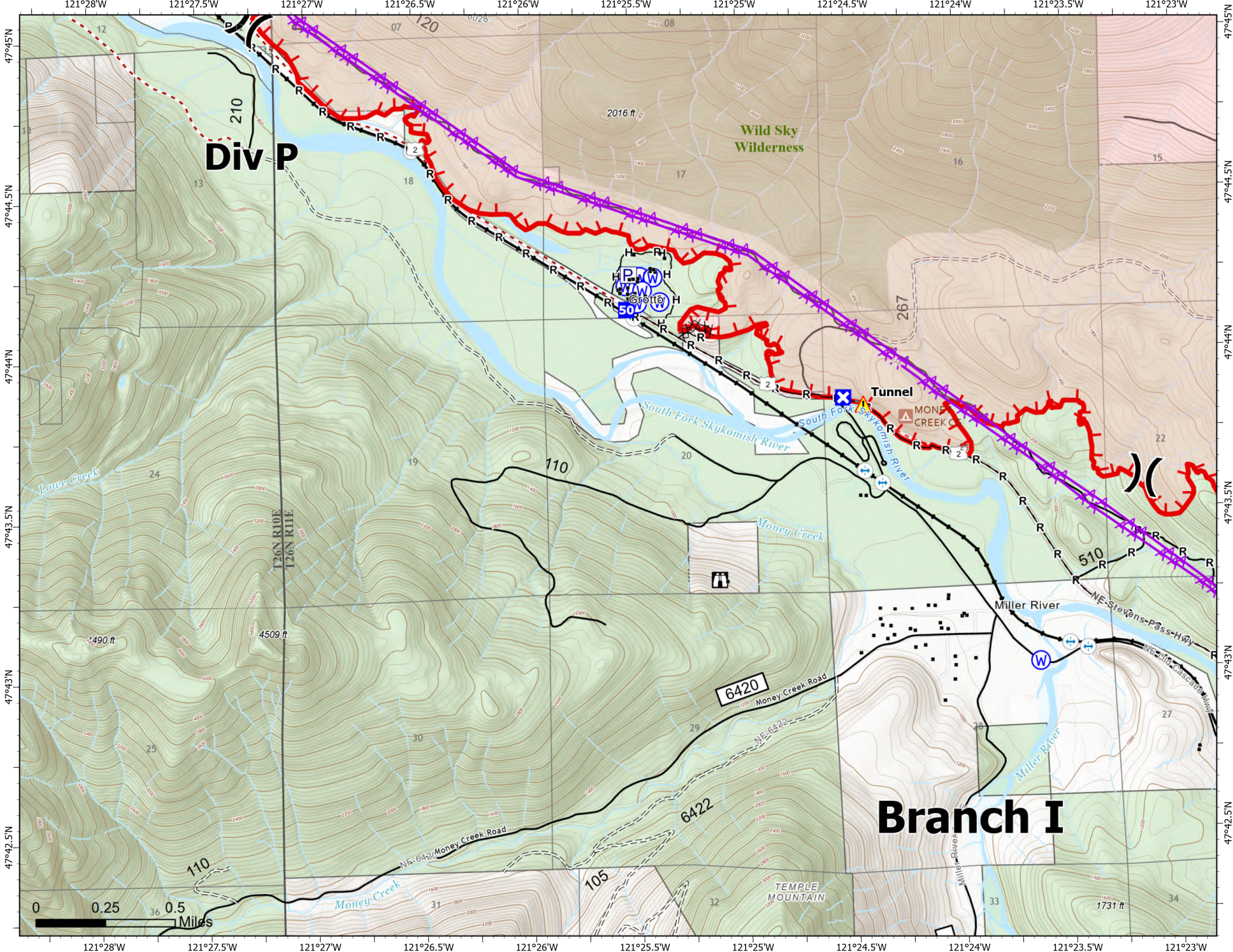


Page 11 of 14

- (X) Division Break
- Drop Point
- ⊠ Closure
- ⚠ Lookout
- ⚠ Tunnel
- Ⓜ Water Source
- structures
- Ⓜ Pump
- ⊗ Completed Dozer Line
- H— Completed Hand Line
- R— Completed Road as Line
- Other
- ⚡ Aerial Hazard
- ⚠ Uncontained
- Trail
- US Forest Service (USFS)
- Private
- Ⓜ Campground
- Ⓜ Bridges
- Ⓜ Railroads
- Open Roads
- == Closed Roads
- - - Decommissioned Roads
- Trail
- county
- Wilderness



Map updated:  
9/19/2022 2137



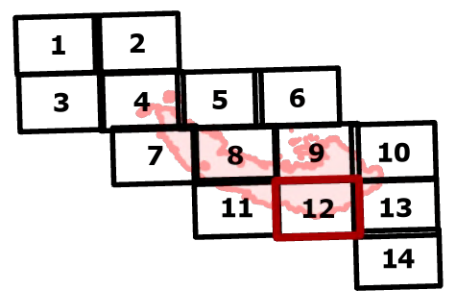
# IAP

## Bolt Creek

### WA-NWS-000150

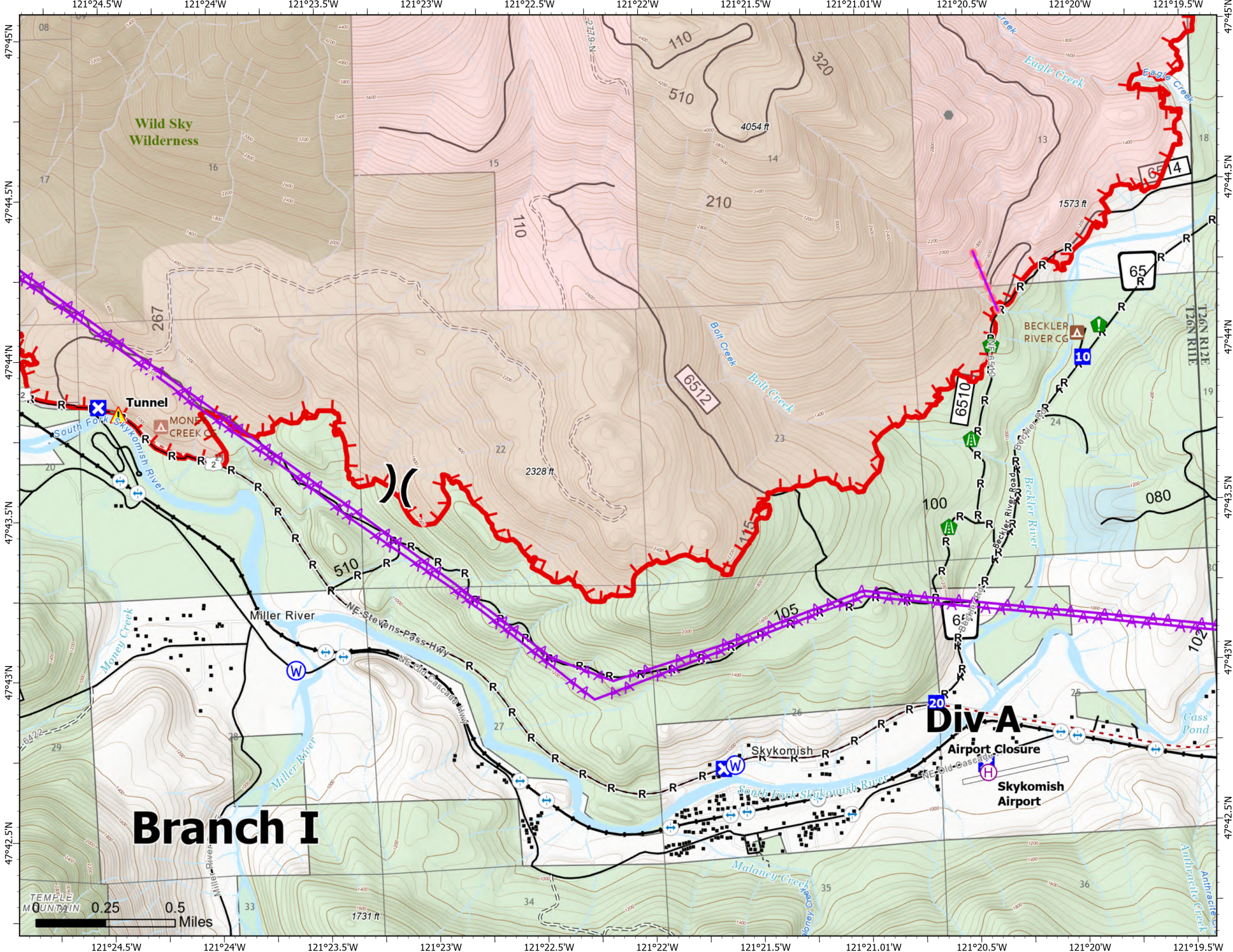
#### 09/20/2022

10,095 acres at 09/19/2022 @1700



Page 12 of 14

- |                          |                            |
|--------------------------|----------------------------|
| ⊕ Helibase               | --- Trail                  |
| ⊗ Division Break         | ▭ Runway                   |
| ■ Drop Point             | ▭ State                    |
| ⊠ Closure                | ▭ US Forest Service (USFS) |
| ● Other                  | ▭ Private                  |
| 🛠 Road Repair            | ⬆ Campground               |
| 🌳 Resource Location      | ⚖ Bridges                  |
| 🌳 Culvert                | 🚂 Railroads                |
| 🏠 Tunnel                 | — Open Roads               |
| 🌊 Water Source           | — Closed Roads             |
| 🏠 structures             | — Decommissioned Roads     |
| — Completed Road as Line | --- Trail                  |
| — Other                  | ▭ Runway                   |
| 🚀 Aerial Hazard          | ▭ county                   |
| 🚒 Retardant Drop         | ▭ Wilderness               |
| 🔴 Uncontained            |                            |

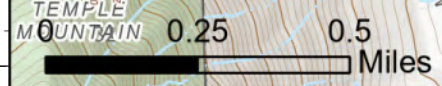


# Branch I

# Div-A



Map updated:  
9/19/2022 2137



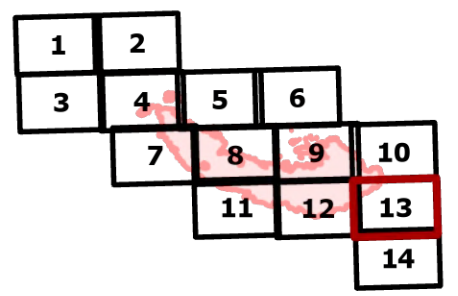
# IAP

## Bolt Creek

### WA-NWS-000150

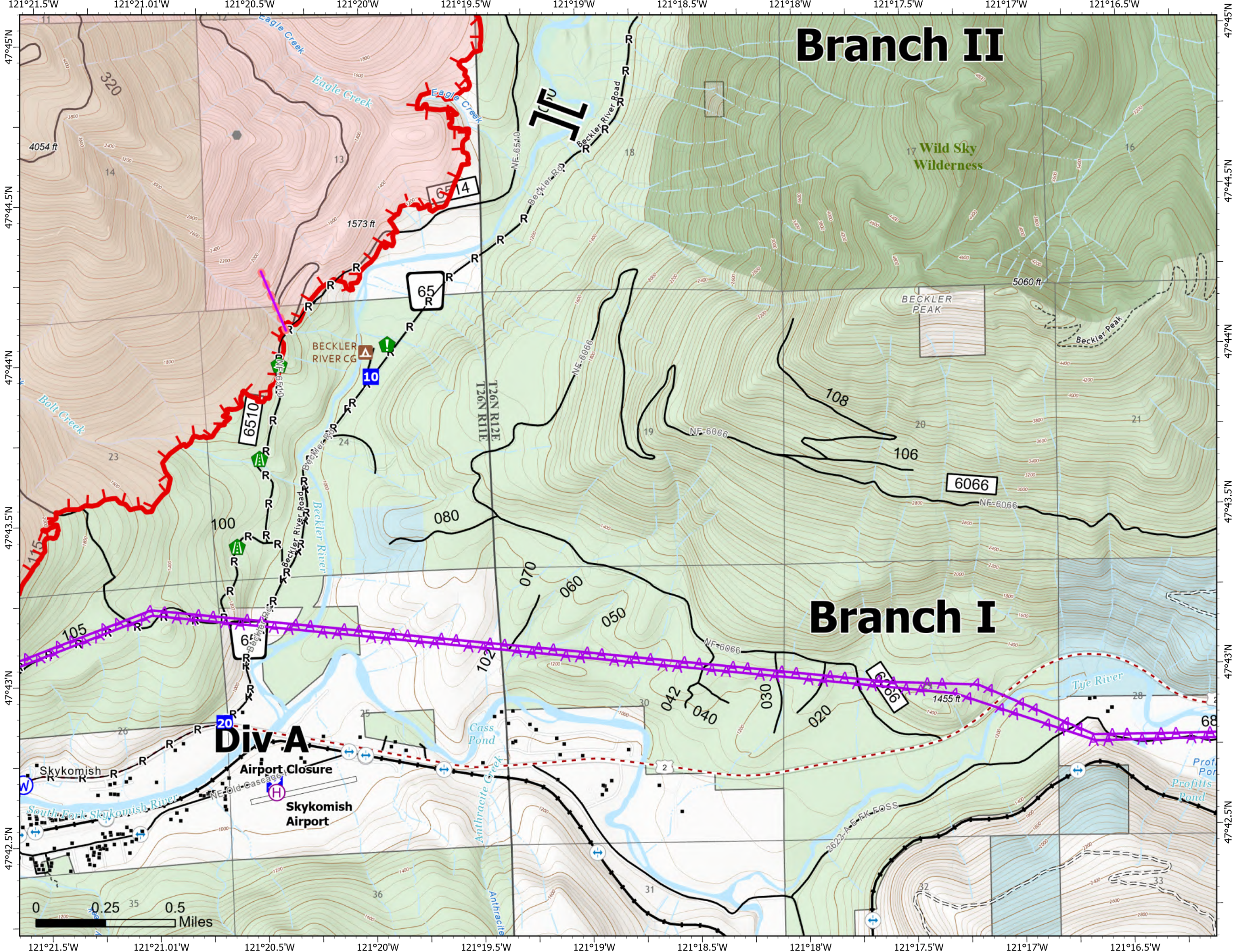
#### 09/20/2022

10,095 acres at 09/19/2022 @1700

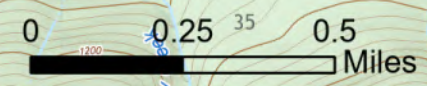


Page 13 of 14

- |                        |                          |
|------------------------|--------------------------|
| Helibase               | Runway                   |
| Branch Break           | State                    |
| Drop Point             | US Forest Service (USFS) |
| Closure                | Private                  |
| Other                  | Campground               |
| Road Repair            | Bridges                  |
| Resource Location      | Railroads                |
| Culvert                | Open Roads               |
| Water Source           | Closed Roads             |
| structures             | Decommissioned Roads     |
| Completed Road as Line | Trail                    |
| Aerial Hazard          | Runway                   |
| Retardant Drop         | county                   |
| Uncontained            | Wilderness               |
| Trail                  |                          |



Map updated:  
9/19/2022 2138



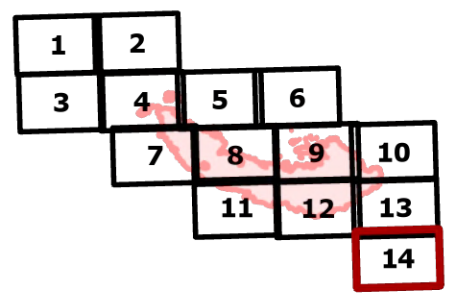
# IAP

## Bolt Creek

### WA-NWS-000150

#### 09/20/2022

10,095 acres at 09/19/2022 @1700

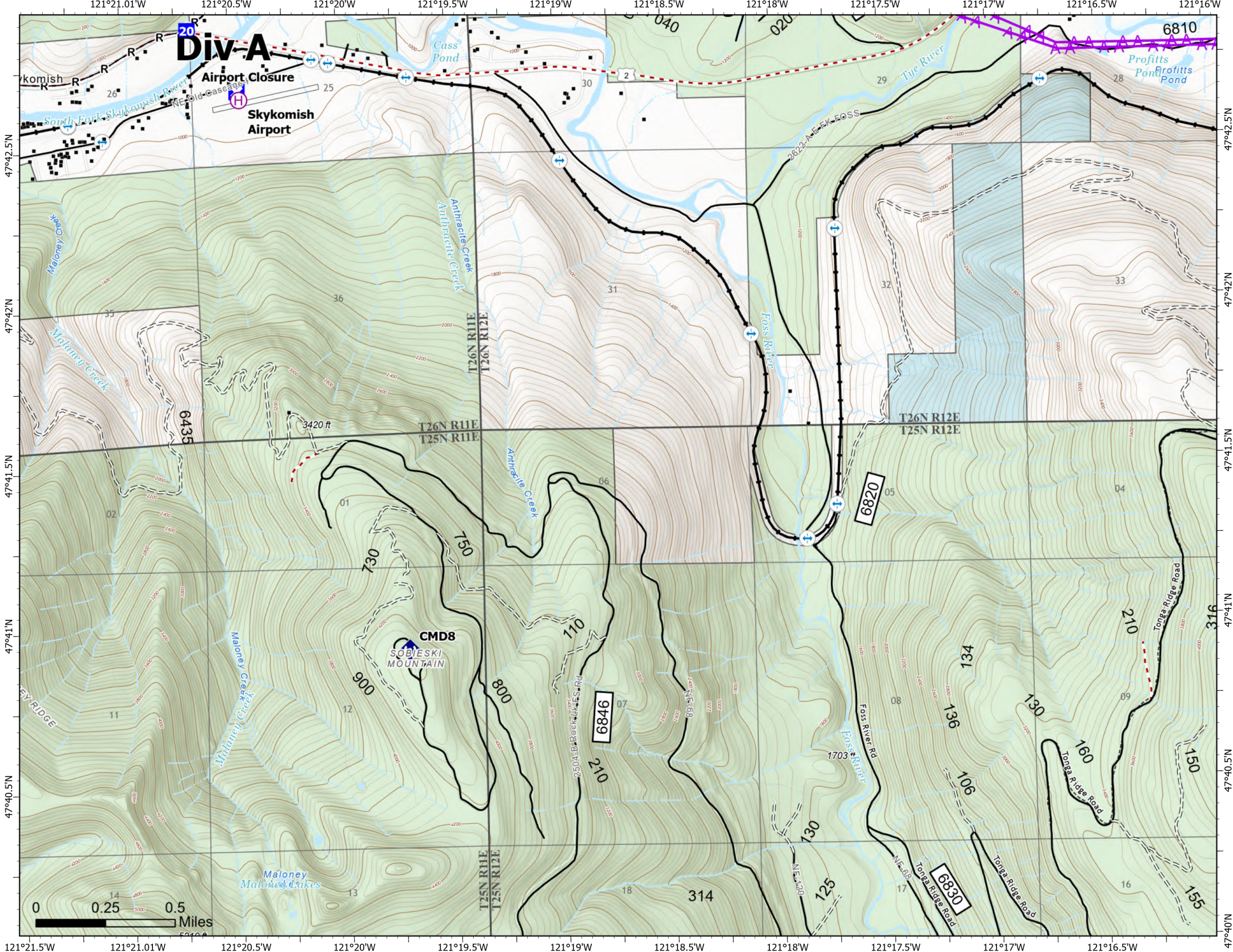


Page 14 of 14

- Helibase
- Drop Point
- Closure
- Repeater
- structures
- Completed Road as Line
- Aerial Hazard
- Trail
- Runway
- State
- US Forest Service (USFS)
- Private
- Bridges
- Railroads
- Open Roads
- Closed Roads
- Decommissioned Roads
- Decommissioned Roads
- Trail
- Runway
- county



Map updated:  
9/19/2022 2138



# Transportation

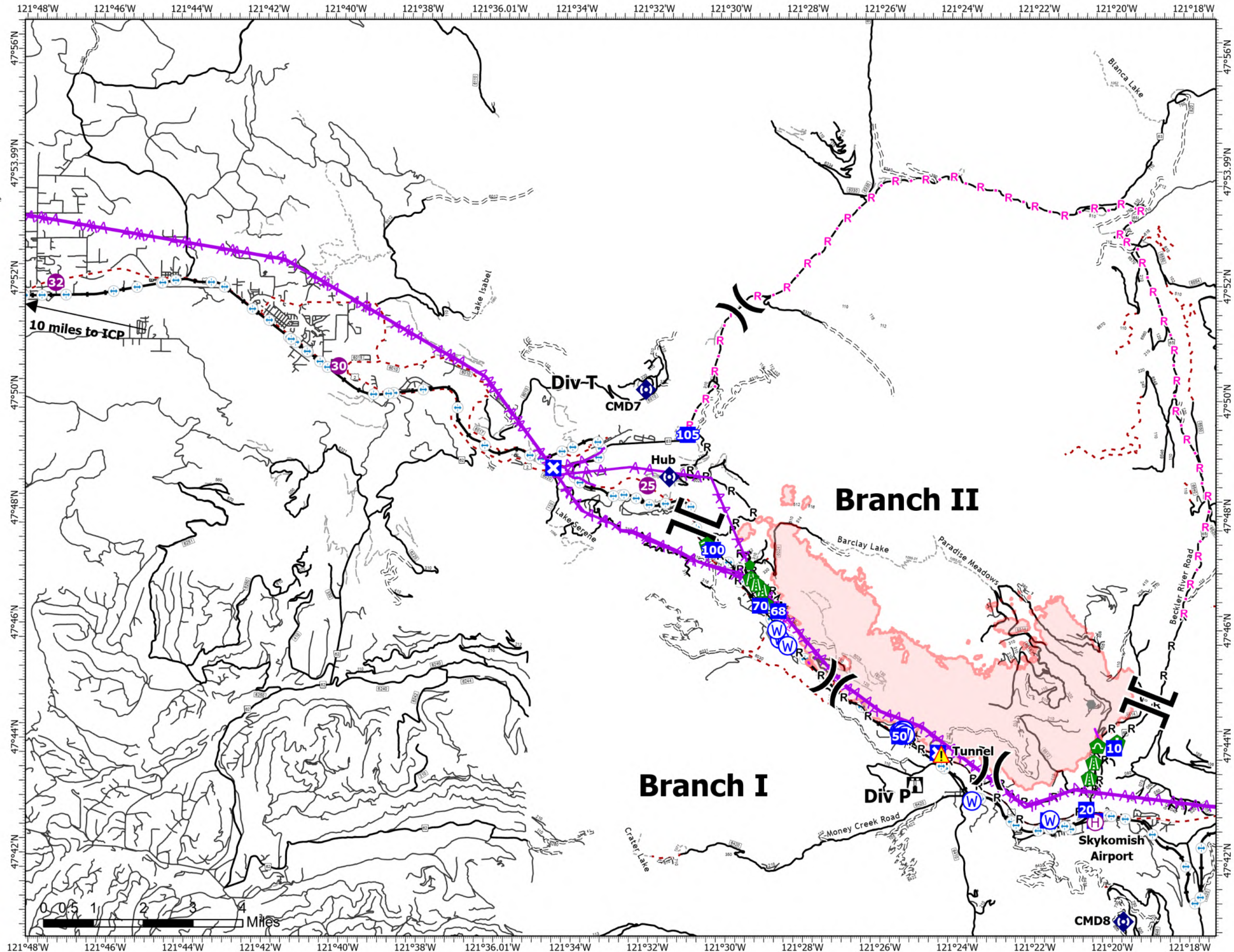
## Bolt Creek

### WA-NWS-000150

#### 09/19/2022

10,095 acres at 09/19/2022 @1700

- |                        |                                     |
|------------------------|-------------------------------------|
| ● Helispot             | ⚡ Completed Fuel Break              |
| ⊕ Helibase             | — Completed Hand Line               |
| ⌵ Division Break       | — Completed Mixed Construction Line |
| ⌵ Branch Break         | — Completed Road as Line            |
| ⊠ Drop Point           | — Planned Dozer Line                |
| ⊠ Closure              | — Planned Road as Line              |
| ⊠ Lookout              | — Other                             |
| ● Other                | — Aerial Hazard                     |
| ● Fire Station         | ● Retardant Drop                    |
| ● Bridge               | — Secondary Hwy                     |
| ● Stream Crossing      | — Local Road                        |
| ● Road Repair          | — 4WD                               |
| ● Resource Location    | — Trail                             |
| ● Repair Point         | □ Runway                            |
| ● Culvert              | ⚡ Bridges                           |
| ● Repeater             | ⚡ Railroads                         |
| ● Tunnel               | — Open Roads                        |
| ● Water Source         | — Closed Roads                      |
| — Completed Burnout    | — Decommissioned Roads              |
| — Completed Dozer Line | — Decommissioned Roads              |



Map Updated  
9/19/2022 2207

