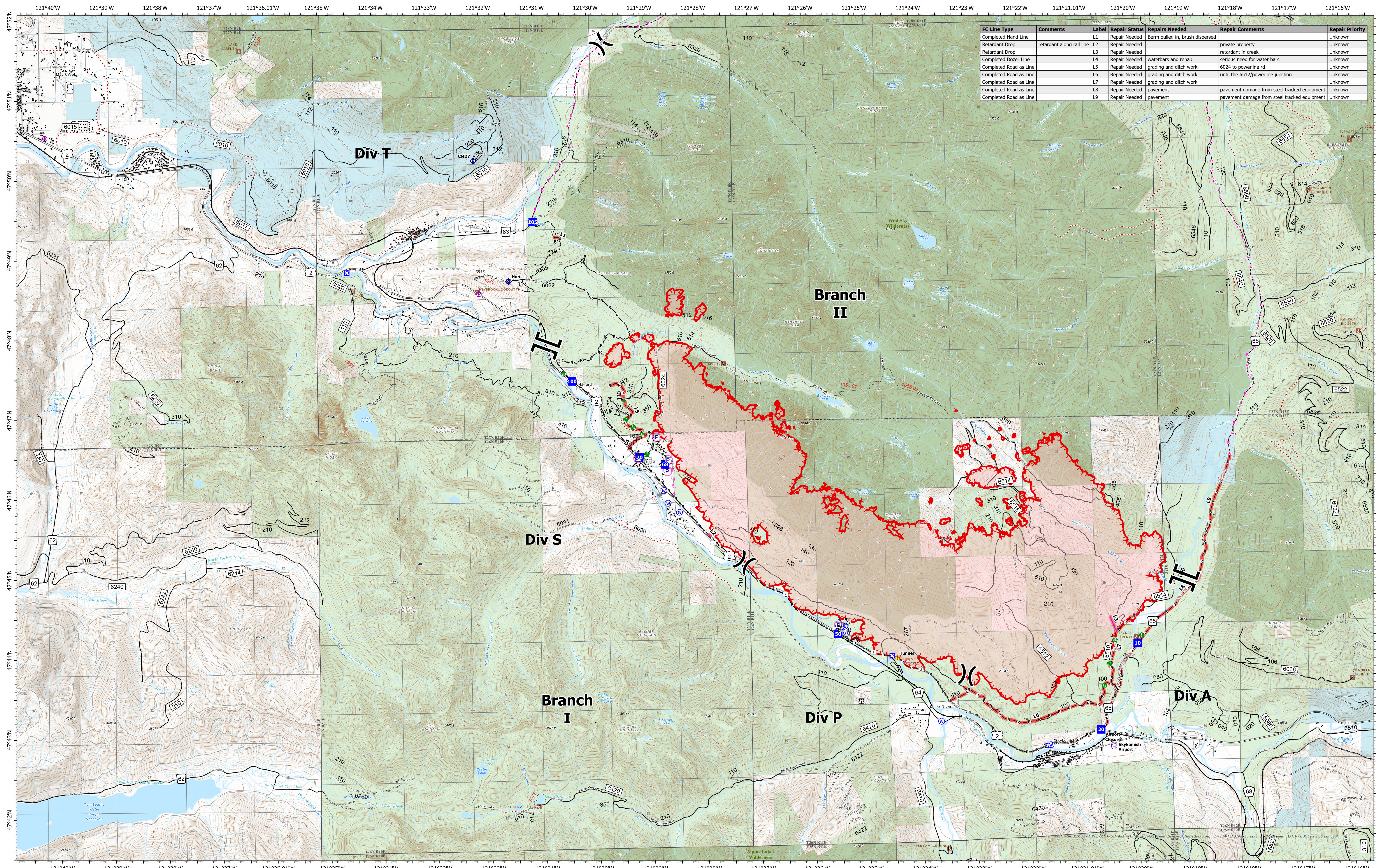


Line Repair



FC Line Type	Comments	Label	Repair Status	Repairs Needed	Repair Comments	Repair Priority
Completed Hand Line		L1	Repair Needed	Berm pulled in, brush dispersed		Unknown
Retardant Drop	retardant along rail line	L2	Repair Needed		private property	Unknown
Retardant Drop		L3	Repair Needed		retardant in creek	Unknown
Completed Dozer Line		L4	Repair Needed	waterbars and rehab	serious need for water bars	Unknown
Completed Road as Line		L5	Repair Needed	grading and ditch work	6024 to powerline rd	Unknown
Completed Road as Line		L6	Repair Needed	grading and ditch work	until the 6512/powerline junction	Unknown
Completed Road as Line		L7	Repair Needed	grading and ditch work		Unknown
Completed Road as Line		L8	Repair Needed	pavement	pavement damage from steel tracked equipment	Unknown
Completed Road as Line		L9	Repair Needed	pavement	pavement damage from steel tracked equipment	Unknown

Bolt Creek
WA-NWS-000150
09/20/2022

10,095 acres at 09/19/2022 @1700
 9/19/2022 2321

- In Use - Fire Management
- Repair Needed
- Pump
- Water Tank
- Helispot
- Helibase
- X Division Break
- X Branch Break
- Drop Point
- Closure
- Lookout
- Other
- Fire Station
- Bridge
- Stream Crossing
- Road Repair
- Resource Location
- Repair Point
- Culvert
- Repeater
- Hazard
- Water Source
- Completed Burnout
- Completed Dozer Line
- M Completed Fuel Break
- M Completed Hand Line
- M Completed Mixed Construction Line
- M Completed Road as Line
- M Planned Dozer Line
- M Planned Road as Line
- M Other
- M Retardant Drop
- Uncontained
- Campground
- Lookout/Cabin
- Trailhead
- Major Highways
- Open Roads
- Closed Roads
- Decommissioned Roads
- Trail
- county
- Wilderness
- Bureau of Land Management (BLM)
- State
- US Forest Service (USFS)
- Private

