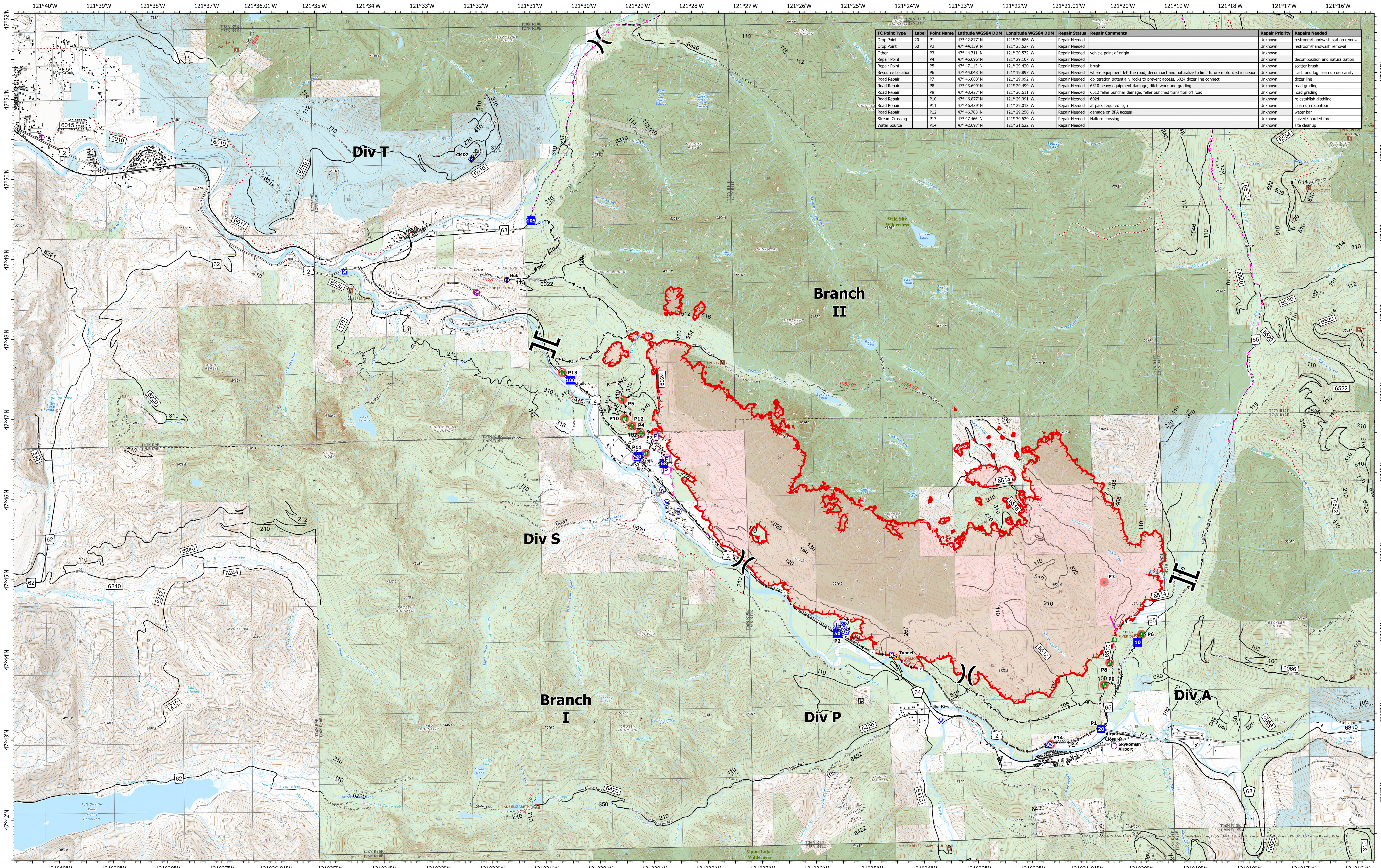


Point Repair



Bolt Creek
WA-NWS-000150
09/20/2022

10,095 acres at 09/19/2022 @1700

9/19/2022 2310

- Repair Needed
- Drop Point
- Resource Location
- M Completed Fuel Break
- Uncontained
- Closure
- Repair Point
- H Completed Hand Line
- Campground
- Lookout
- Culvert
- M Completed Mixed Construction Line
- Lookout/Cabin
- Pump
- Repeater
- M Completed Road as Line
- Trailhead
- Water Tank
- Hazard
- M Planned Dozer Line
- Railroads
- Helispot
- Water Source
- M Planned Road as Line
- Major Highways
- Helibase
- Stream Crossing
- M Other
- Open Roads
- Division Break
- Road Repair
- M Completed Burnout
- Closed Roads
- Branch Break
- Completed Dozer Line
- M Retardant Drop
- Decommissioned Roads
- Trail
- Wilderness
- M Bureau of Land Management (BLM)
- County
- State
- US Forest Service (USFS)
- M Private

