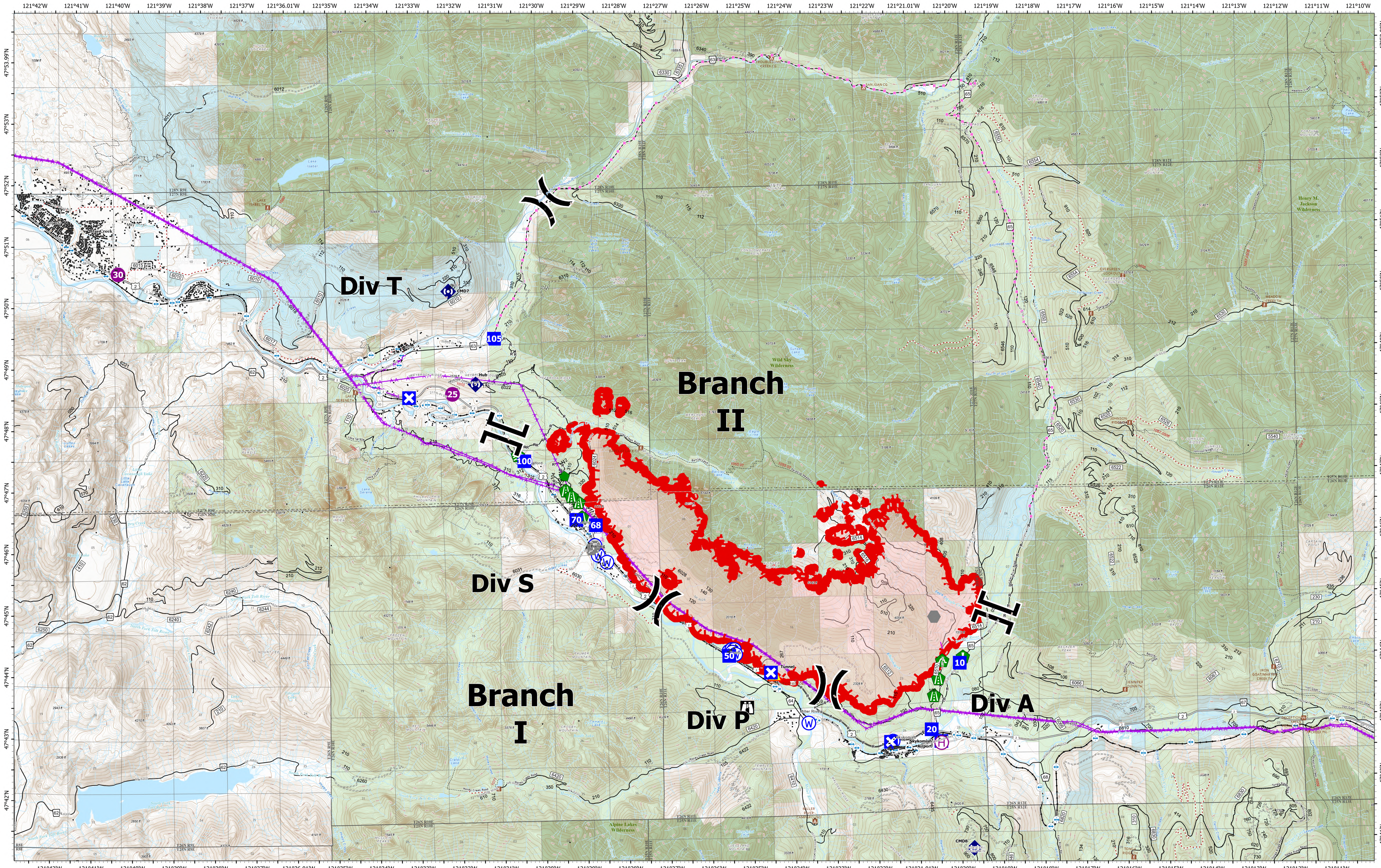


Briefing



Bolt Creek
WA-NWS-000150
09/21/2022

10,193 acres at 09/19/2022 @ 1952

9/20/2022 2109

- | | | | | | | |
|----------------|--------------|-------------------|-----------------------------|---------------------------|-------------------------------------|--------------------------|
| Pump | Drop Point | Stream Crossing | Tunnel | Day Use/Picnic | Forest Service Decommissioned Roads | US Forest Service (USFS) |
| Water Tank | Closure | Road Repair | Water Source | Lookout/Cabin | Trail | Private |
| Helispot | Lookout | Resource Location | Uncontained | Trailhead | county | Major Highways |
| Helibase | Fire Station | Repair Point | Bridges | Railroads | Wilderness | |
| Division Break | Bridge | Culvert | Campground | Forest Service Open Roads | Bureau of Land Management (BLM) | |
| Branch Break | Repeater | Other | Forest Service Closed Roads | State | | |

