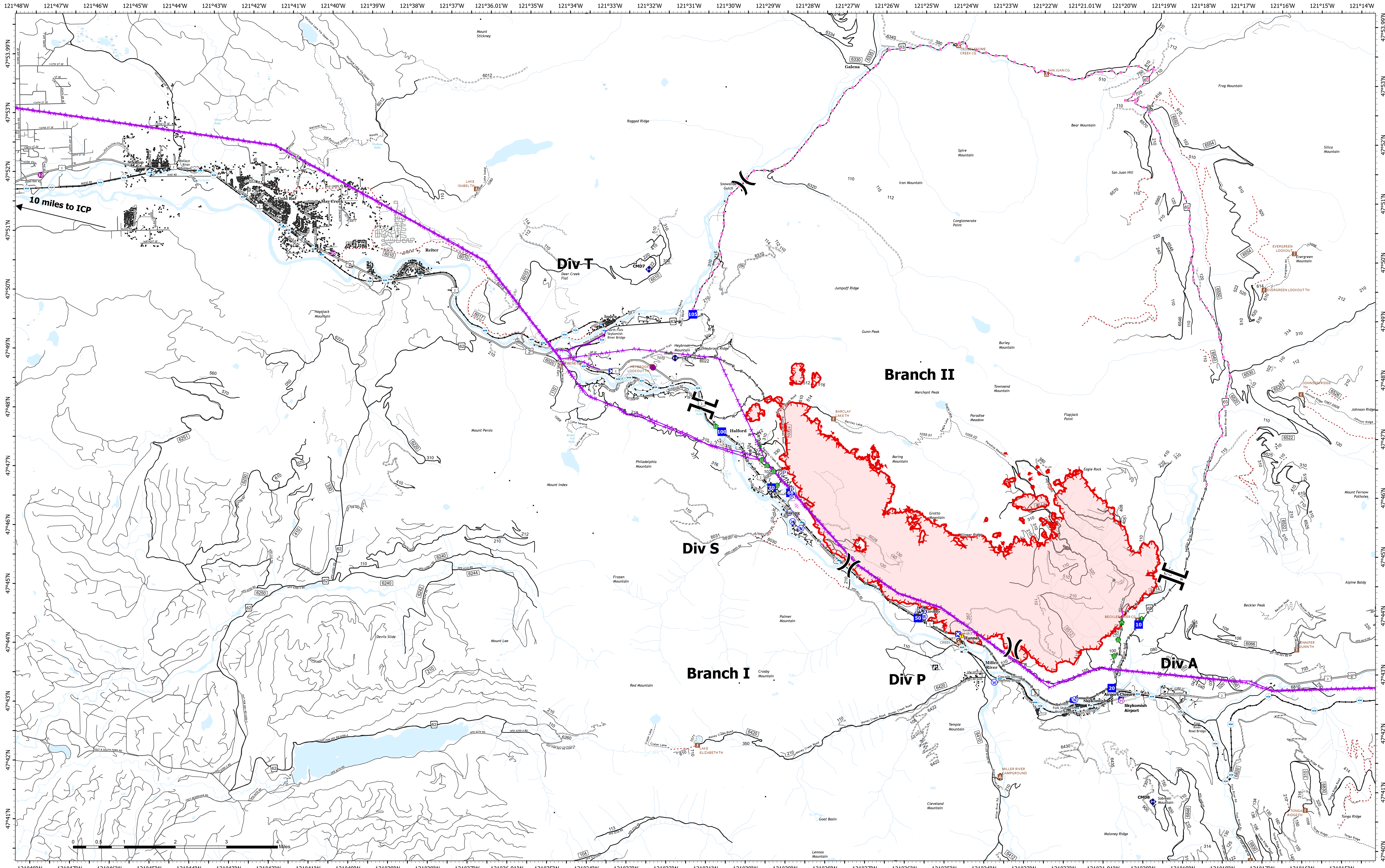


Transportation



Bolt Creek
WA-NWS-000150
09/21/2022

10,193 acres at 09/19/2022 @ 1952

9/20/2022 2044

Pump	Closure	Resource Location	Completed Dozer Line	Other	Trail	Closed Roads
Water Tank	Lookout	Repair Point	Completed Fuel Break	Aerial Hazard	Campground	Decommissioned Roads
Helibase	Other	Culvert	Completed Hand Line	Retardant Drop	LOOKOUT/CABIN	Decommissioned Roads
Fire Station	Repeater	Tunnel	Completed Mixed Construction Line	Uncontained	TRAILHEAD	Trail
Bridge	Water Source	Stream Crossing	Completed Road as Line	Secondary Hwy	Bridges	Runway
Division Break	Road Repair	Completed Burnout	Planned Dozer Line	Local Road	Railroads	Major Highways
Drop Point		Planned Road as Line		4WD	Open Roads	

