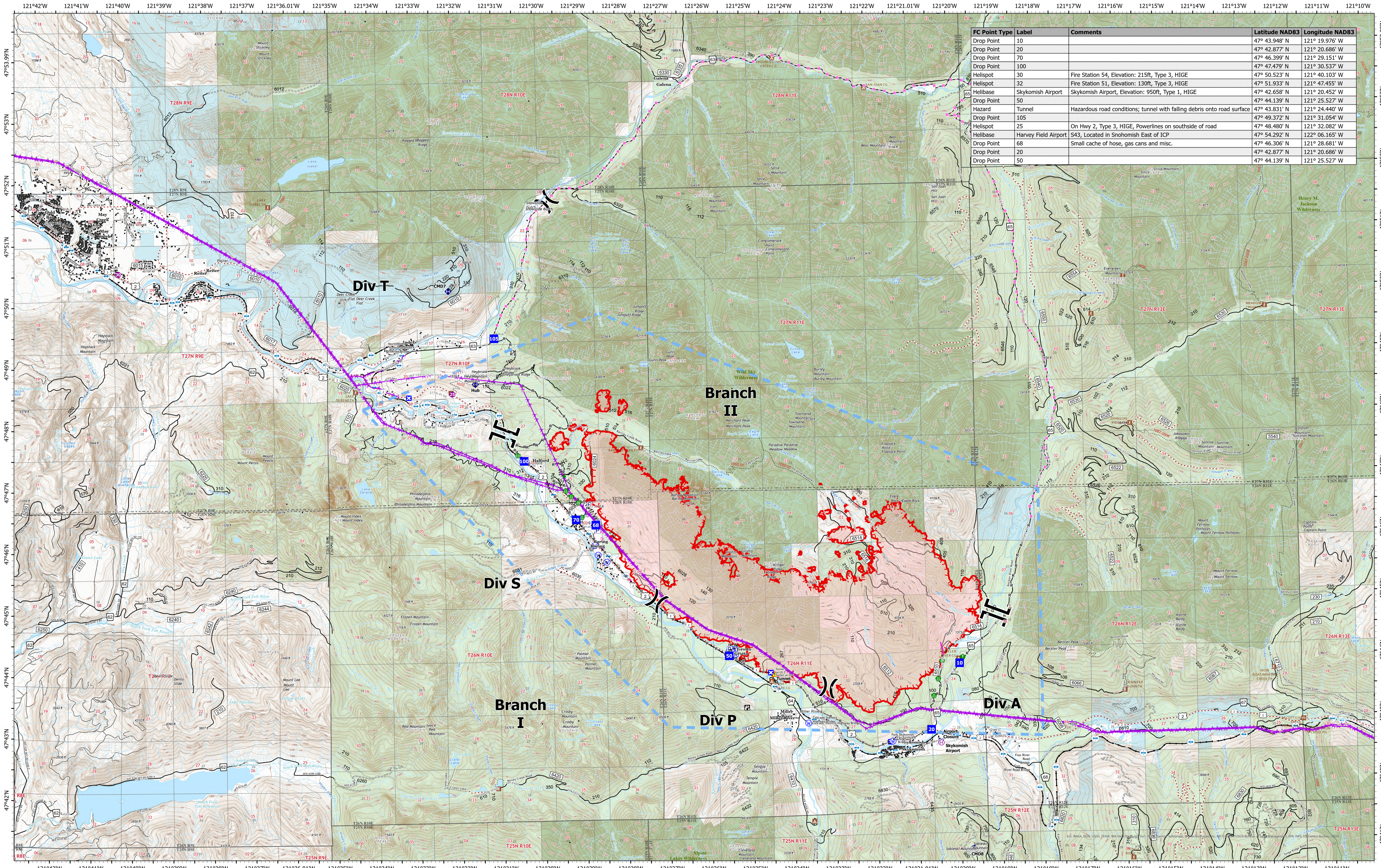


Communications



Bolt Creek
WA-NWS-000150
09/21/2022

10,193 acres at 09/19/2022 @ 1952

9/20/2022 2058

- P Pump
- W Water Tank
- H Helispot
- HB Helibase
- D Division Break
- B Branch Break
- DP Drop Point
- R Resource Location
- RP Repair Point
- C Culvert
- F Fire Station
- BR Bridge
- SC Stream Crossing
- RR Road Repair
- CL Completed Dozer Line
- CF Completed Fuel Break
- CH Completed Hand Line
- CM Completed Mixed Construction Line
- CR Completed Road as Line
- PL Planned Dozer Line
- PR Planned Road as Line
- O Other
- AH Aerial Hazard
- RD Retardant Drop
- TF Temporary Flight Restriction
- U Uncontained
- CA Campground
- DU Day Use/Picnic
- L Lookout/Cabin
- T Trailhead
- B Bridges
- R Railroads
- FO Forest Service Open Roads
- FC Forest Service Closed Roads
- FD Forest Service Decommissioned Roads
- DR Decommissioned Roads
- TR Trail
- CO county
- W Wilderness
- BLM Bureau of Land Management (BLM)
- S State
- US Forest Service (USFS)
- Private

