

IAP

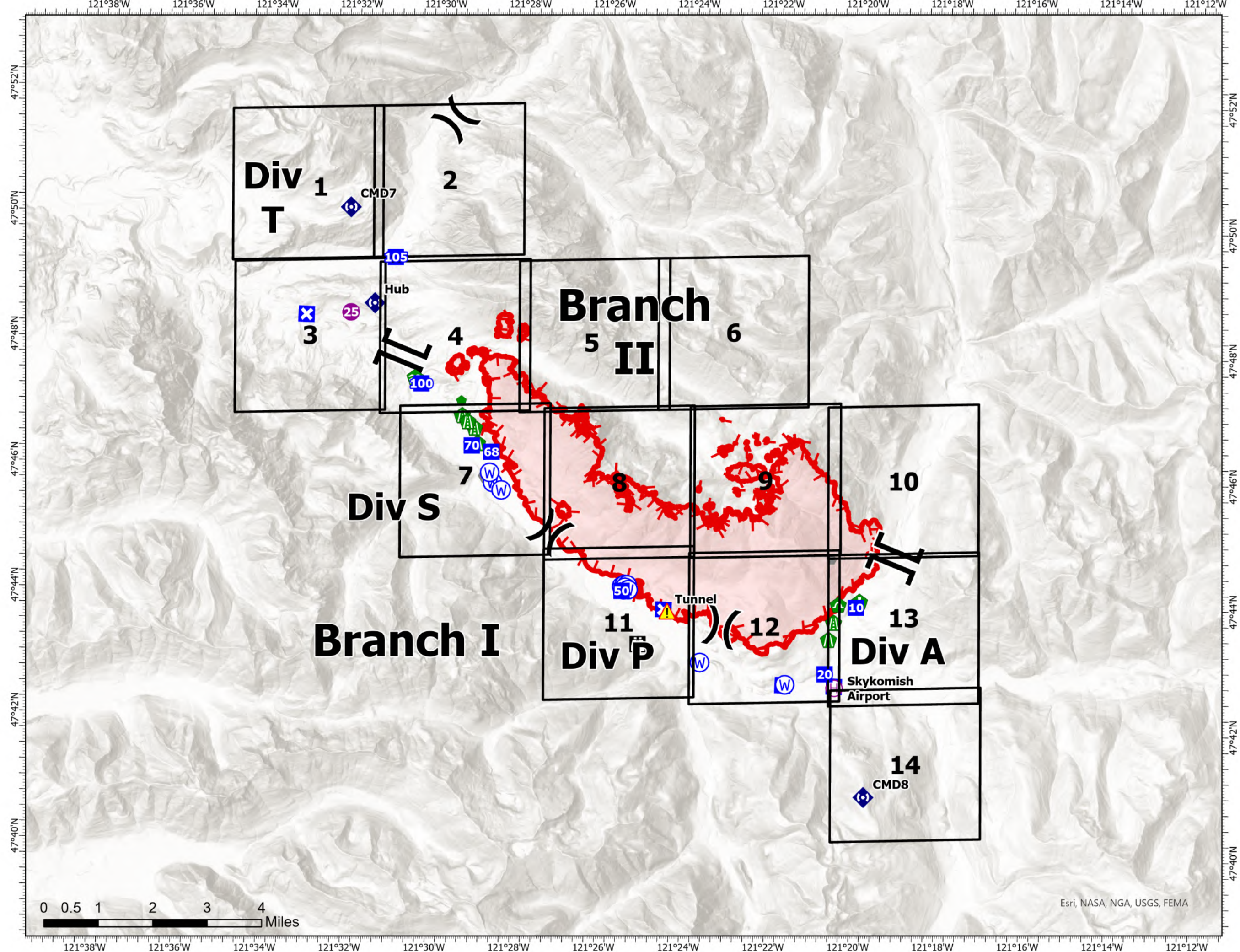
Bolt Creek

WA-NWS-000150

09/21/2022

10,193 acres at 09/19/2022 @1952

- Helispot
- ⊕ Helibase
- ⌋ Division Break
- ⌌ Branch Break
- Drop Point
- ⊗ Closure
- ⌚ Lookout
- Other
- ⚡ Fire Station
- ⌚ Bridge
- ⌚ Stream Crossing
- ⌚ Road Repair
- ⌚ Resource Location
- ⌚ Repair Point
- ⌚ Culvert
- ⌚ Repeater
- ⚠ Tunnel
- ⊕ Water Source
- Uncontained



Map updated:
9/20/2022 2049

Esri, NASA, NGA, USGS, FEMA

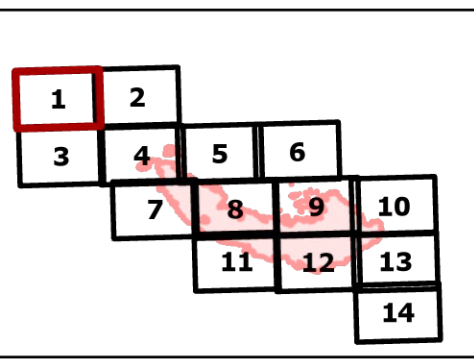
IAP

Bolt Creek

WA-NWS-000150

09/21/2022

10,193 acres at 09/19/2022 @1952

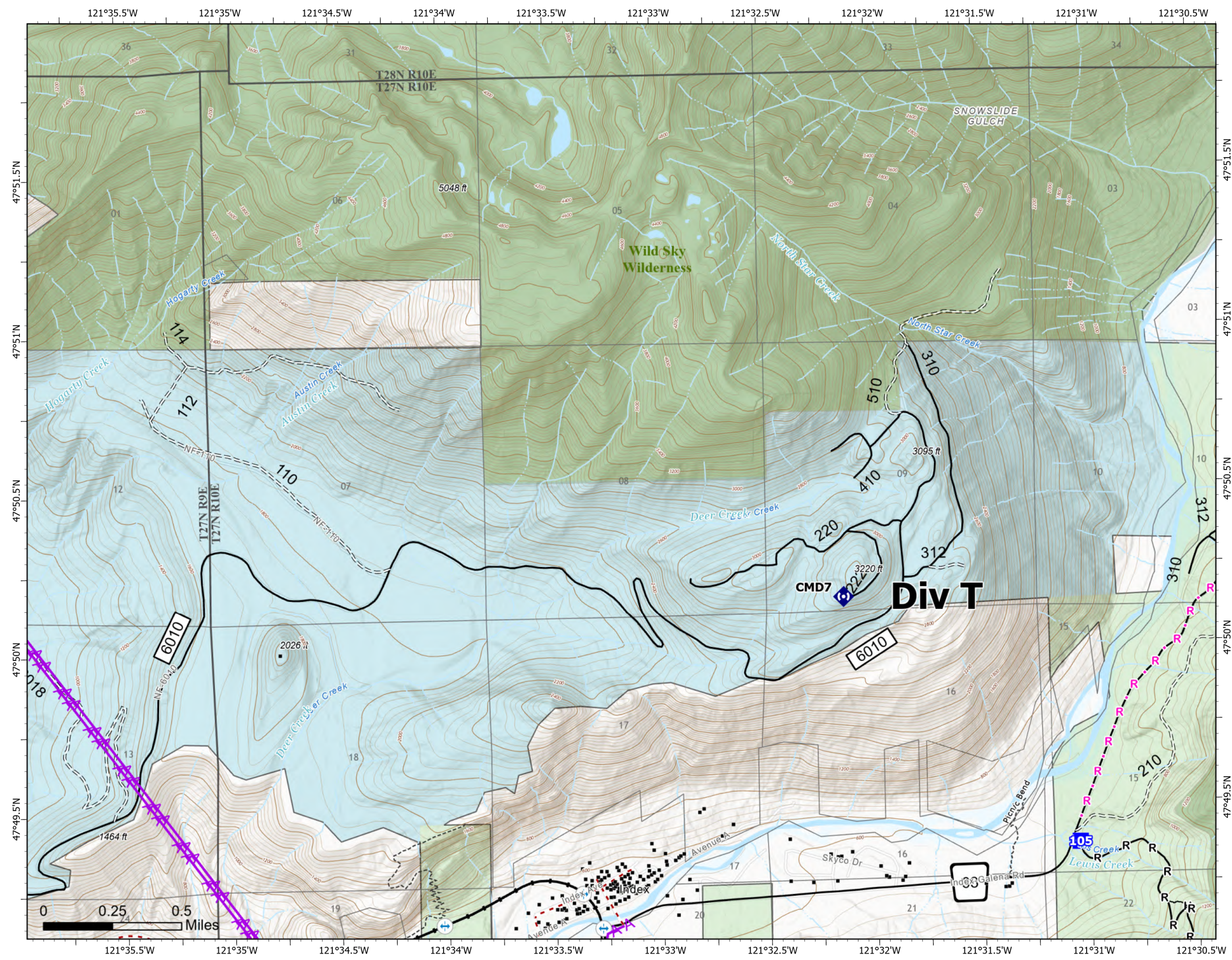


Page 1 of 14

- Drop Point
- Repeater
- structures
- Completed Hand Line
- Completed Road as Line
- Planned Road as Line
- Aerial Hazard
- Trail
- State
- US Forest Service (USFS)
- Private
- Undetermined
- Bridges
- Railroads
- Open Roads
- Closed Roads
- Decommissioned Roads
- Trail
- county
- Wilderness



Map updated:
9/20/2022 2055



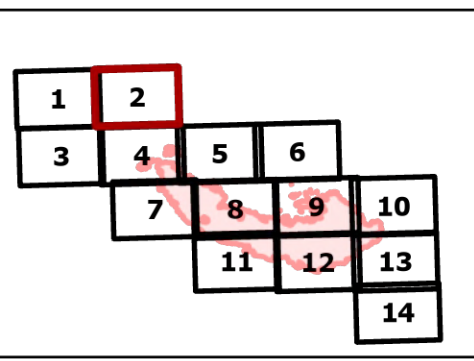
IAP

Bolt Creek

WA-NWS-000150

09/21/2022

10,193 acres at 09/19/2022 @1952

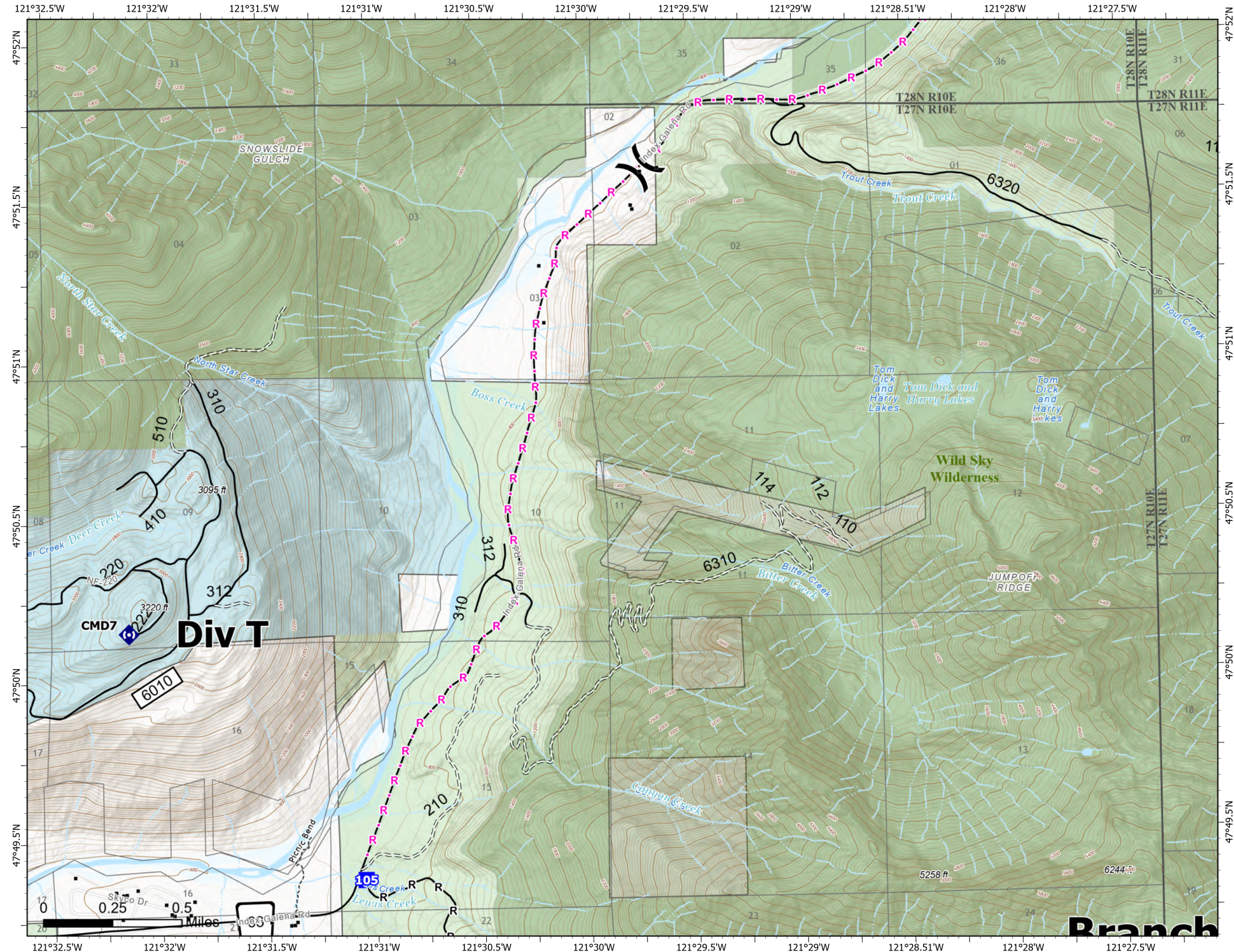


Page 2 of 14

- (X) Division Break
- Drop Point
- Ⓜ Repeater
- structures
- Completed Hand Line
- Completed Road as Line
- Planned Road as Line
- Trail
- State
- US Forest Service (USFS)
- Private
- Undetermined
- Open Roads
- Closed Roads
- Trail
- county
- Wilderness



Map updated:
9/20/2022 2055



Branch

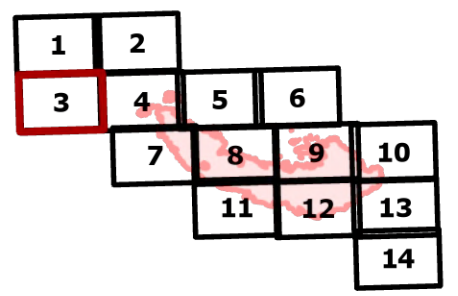
IAP

Bolt Creek

WA-NWS-000150

09/21/2022

10,193 acres at 09/19/2022 @1952

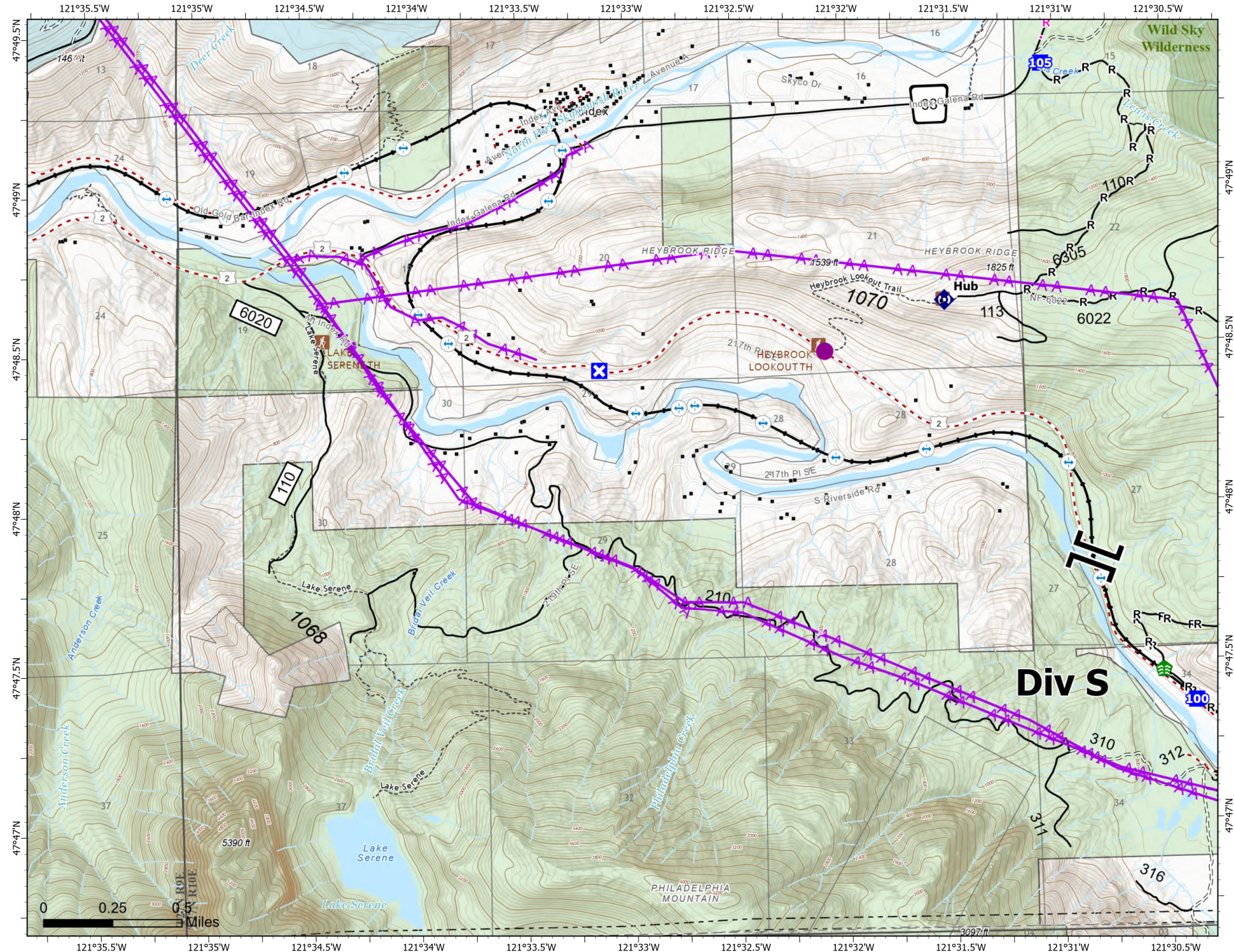


Page 3 of 14

- Helispot
- Branch Break
- Drop Point
- Closure
- Stream Crossing
- Repeater
- structures
- Completed Hand Line
- Completed Road as Line
- Planned Road as Line
- Aerial Hazard
- Trail
- State
- US Forest Service (USFS)
- Private
- Undetermined
- LOOKOUT/CABIN
- TRAILHEAD
- Bridges
- Railroads
- Open Roads
- Closed Roads
- Decommissioned Roads
- Trail
- county
- Wilderness



Map updated:
9/20/2022 2055



Div S

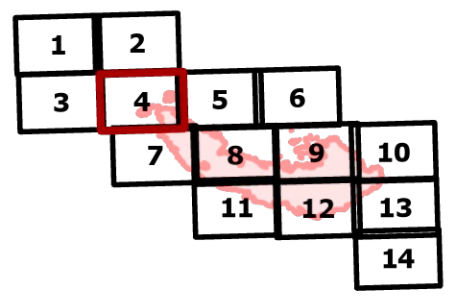
IAP

Bolt Creek

WA-NWS-000150

09/21/2022

10,193 acres at 09/19/2022 @1952

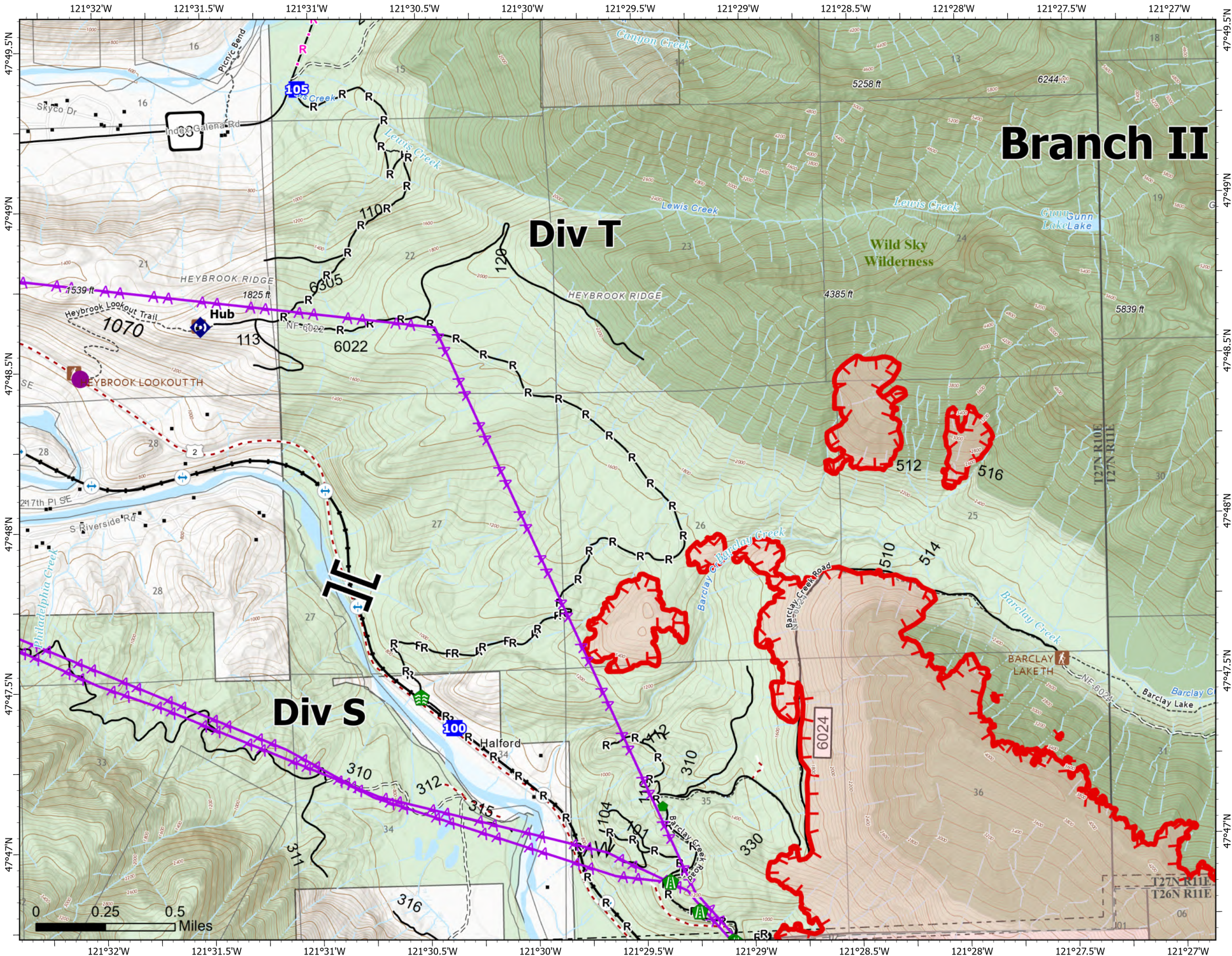


Page 4 of 14

- | | |
|------------------------|--------------------------|
| Helispot | Trail |
| Branch Break | US Forest Service (USFS) |
| Drop Point | Private |
| Stream Crossing | Undetermined |
| Road Repair | LOOKOUT/CABIN |
| Repair Point | TRAILHEAD |
| Repeater | Bridges |
| structures | Railroads |
| Completed Dozer Line | Open Roads |
| Completed Fuel Break | Closed Roads |
| Completed Hand Line | Decommissioned Roads |
| Completed Road as Line | Decommissioned Roads |
| Planned Road as Line | Trail |
| Aerial Hazard | county |
| Uncontained | Wilderness |



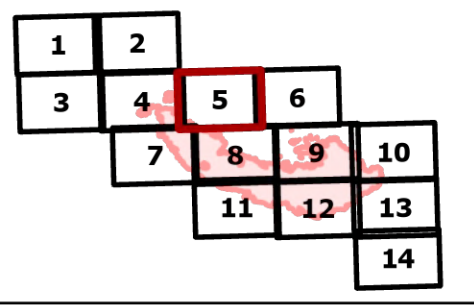
Map updated: 9/20/2022 2055



Branch II

IAP
Bolt Creek
WA-NWS-000150
09/21/2022

10,193 acres at 09/19/2022 @1952

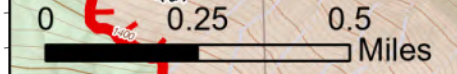
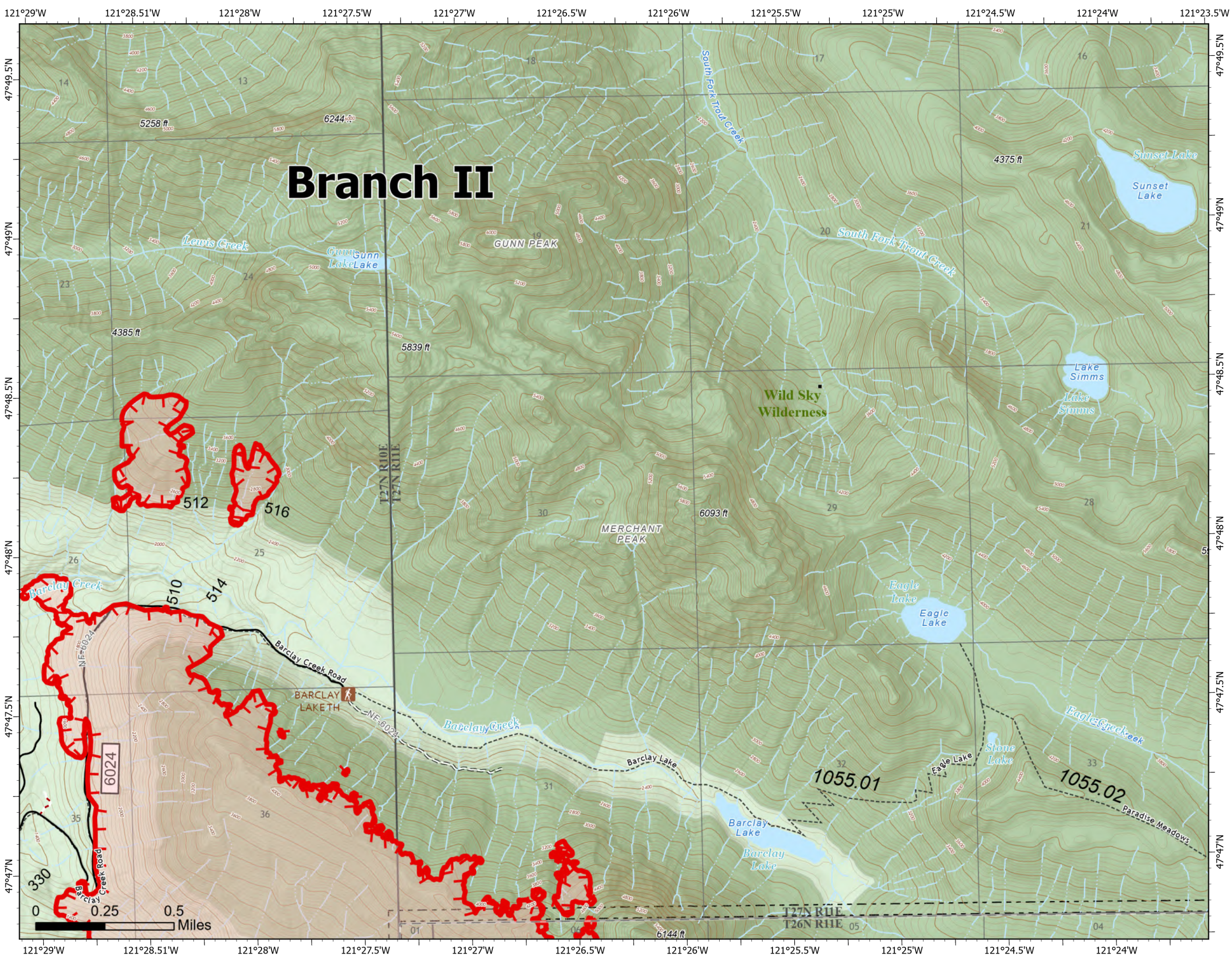


Page 5 of 14

- structures
- Uncontained
- Trail
- US Forest Service (USFS)
- TRAILHEAD
- Open Roads
- Closed Roads
- Decommissioned Roads
- Trail
- county
- Wilderness



Map updated:
9/20/2022 2056



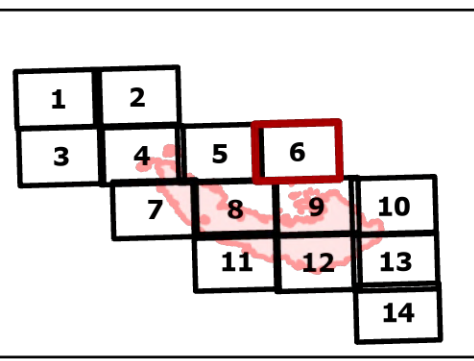
IAP

Bolt Creek






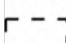


WA-NWS-000150

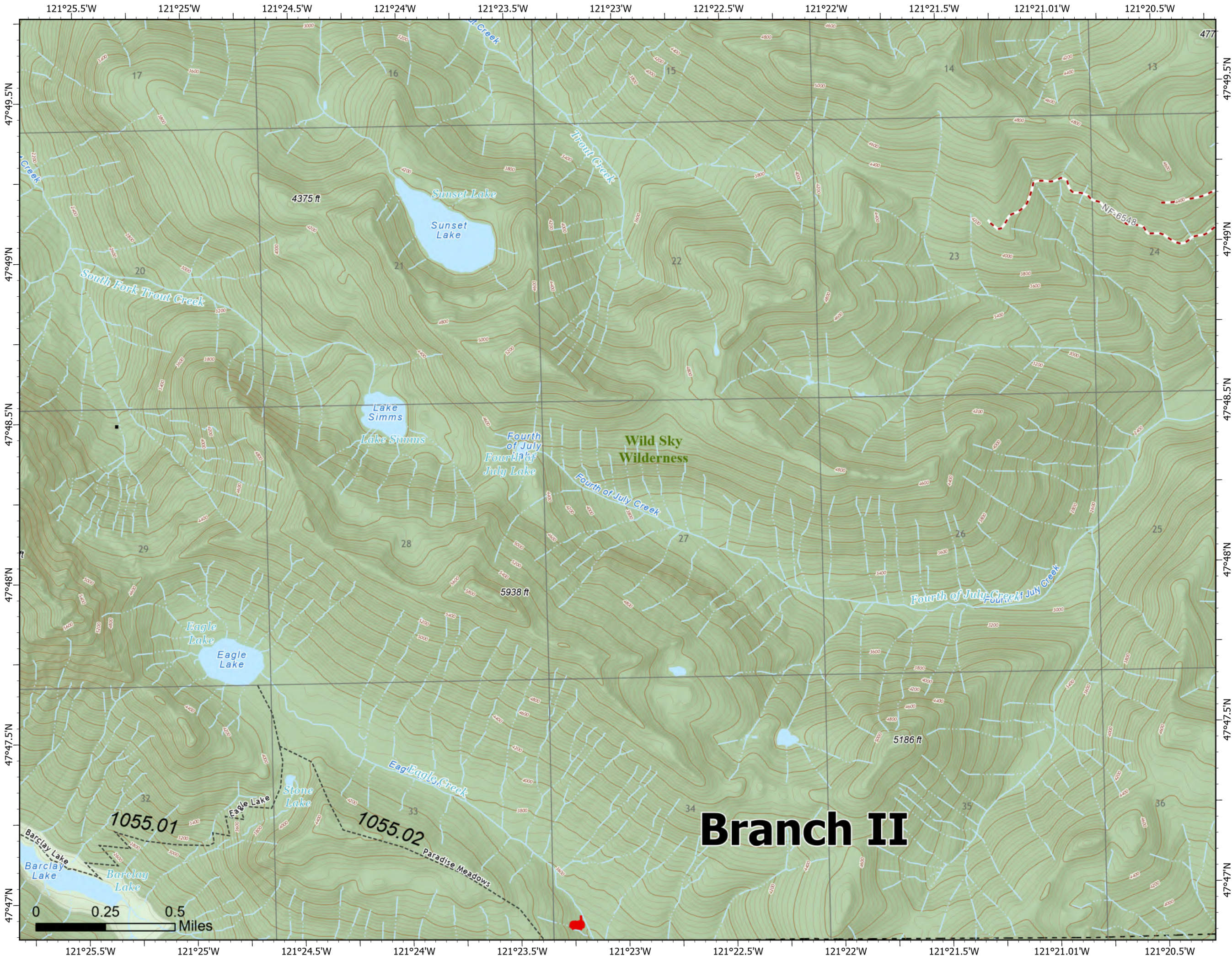
09/21/2022

10,193 acres at 09/19/2022 @1952



Page 6 of 14

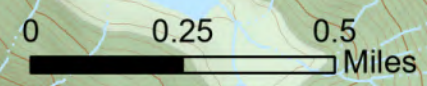
-  structures
-  Uncontained
-  Trail
-  US Forest Service (USFS)
-  Decommissioned Roads
-  Trail
-  county
-  Wilderness



Branch II



Map updated:
9/20/2022 2056



IAP

Bolt Creek

WA-NWS-000150

09/21/2022

10,193 acres at 09/19/2022 @1952

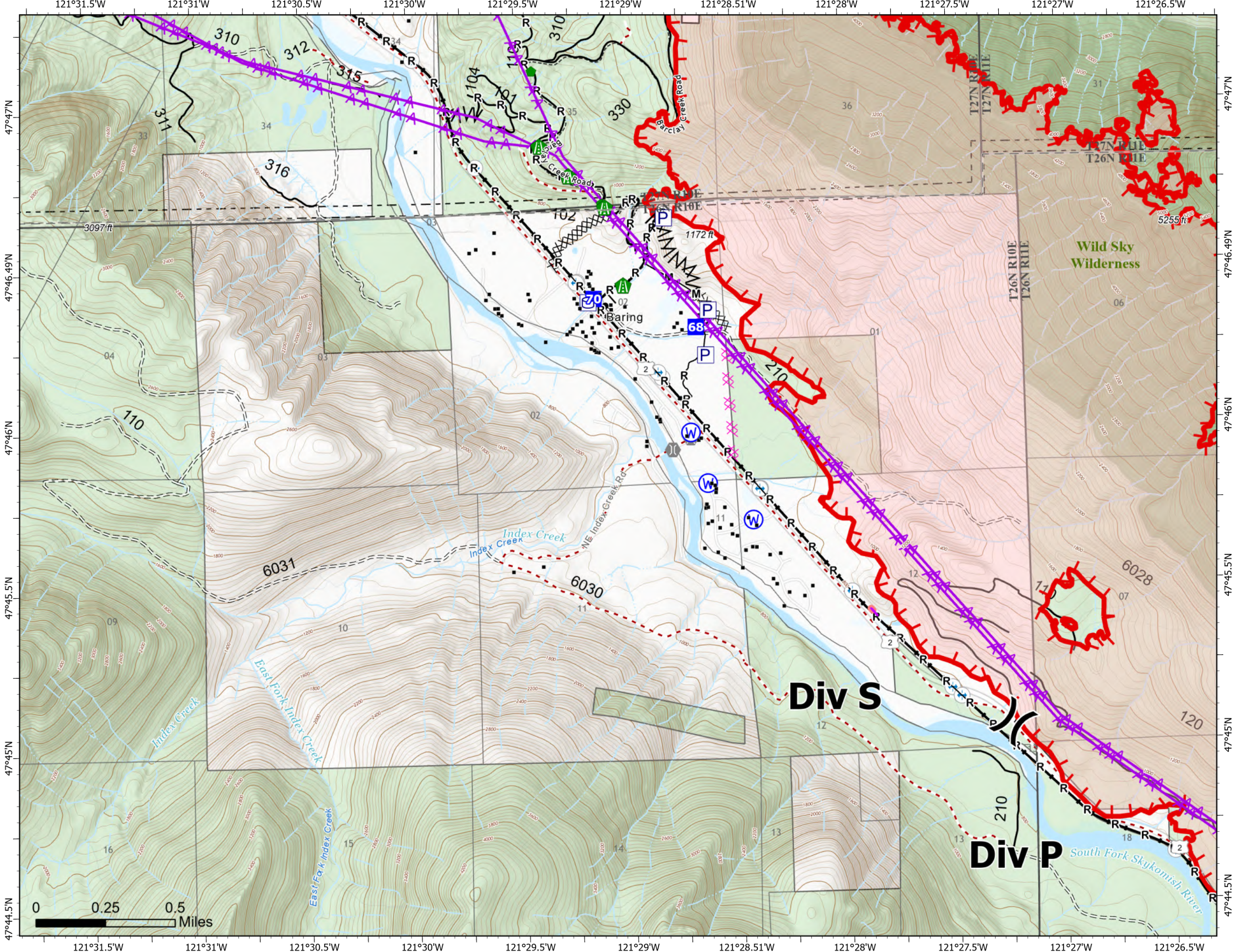
1	2				
3	4	5	6		
	7	8	9	10	
		11	12	13	
				14	

Page 7 of 14

- X Division Break
- Drop Point
- Fire Station
- ⌈ Bridge
- ⬢ Road Repair
- ⬢ Repair Point
- ⊙ Water Source
- structures
- ⊙ Pump
- ⊙ Water Tank
- Completed Burnout
- ⊗ Completed Dozer Line
- ⊗ Completed Fuel Break
- ⊗ Completed Mixed Construction Line
- Completed Road as Line
- Planned Dozer Line
- Aerial Hazard
- ⊙ Retardant Drop
- Uncontained
- Trail
- US Forest Service (USFS)
- Private
- ⊙ Bridges
- Railroads
- Open Roads
- Closed Roads
- Decommissioned Roads
- Decommissioned Roads
- Trail
- county
- Wilderness



Map updated:
9/20/2022 2056



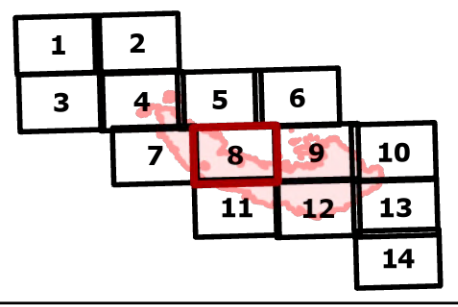
IAP

Bolt Creek

WA-NWS-000150

09/21/2022

10,193 acres at 09/19/2022 @1952

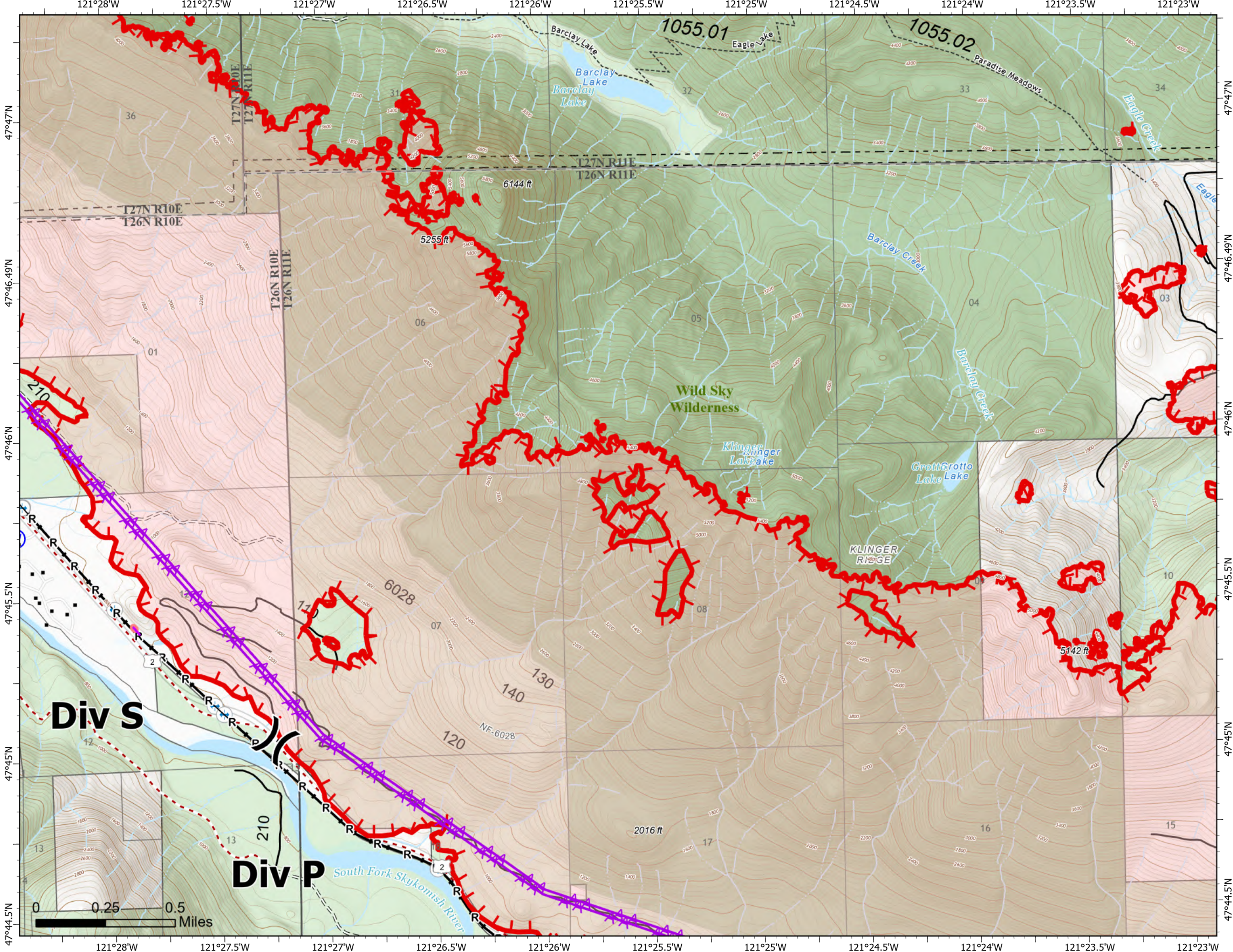


Page 8 of 14

- (X) Division Break
- (W) Water Source
- structures
- R— Completed Road as Line
- AA Aerial Hazard
- Retardant Drop
- Uncontained
- Trail
- US Forest Service (USFS)
- Private
- Bridges
- Railroads
- Open Roads
- Closed Roads
- Decommissioned Roads
- Trail
- county
- Wilderness

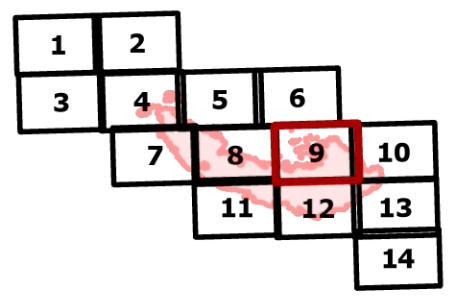


Map updated:
9/20/2022 2057



IAP
Bolt Creek
WA-NWS-000150
09/21/2022

10,193 acres at 09/19/2022 @1952

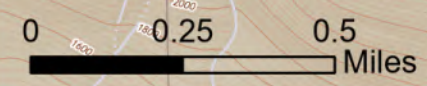
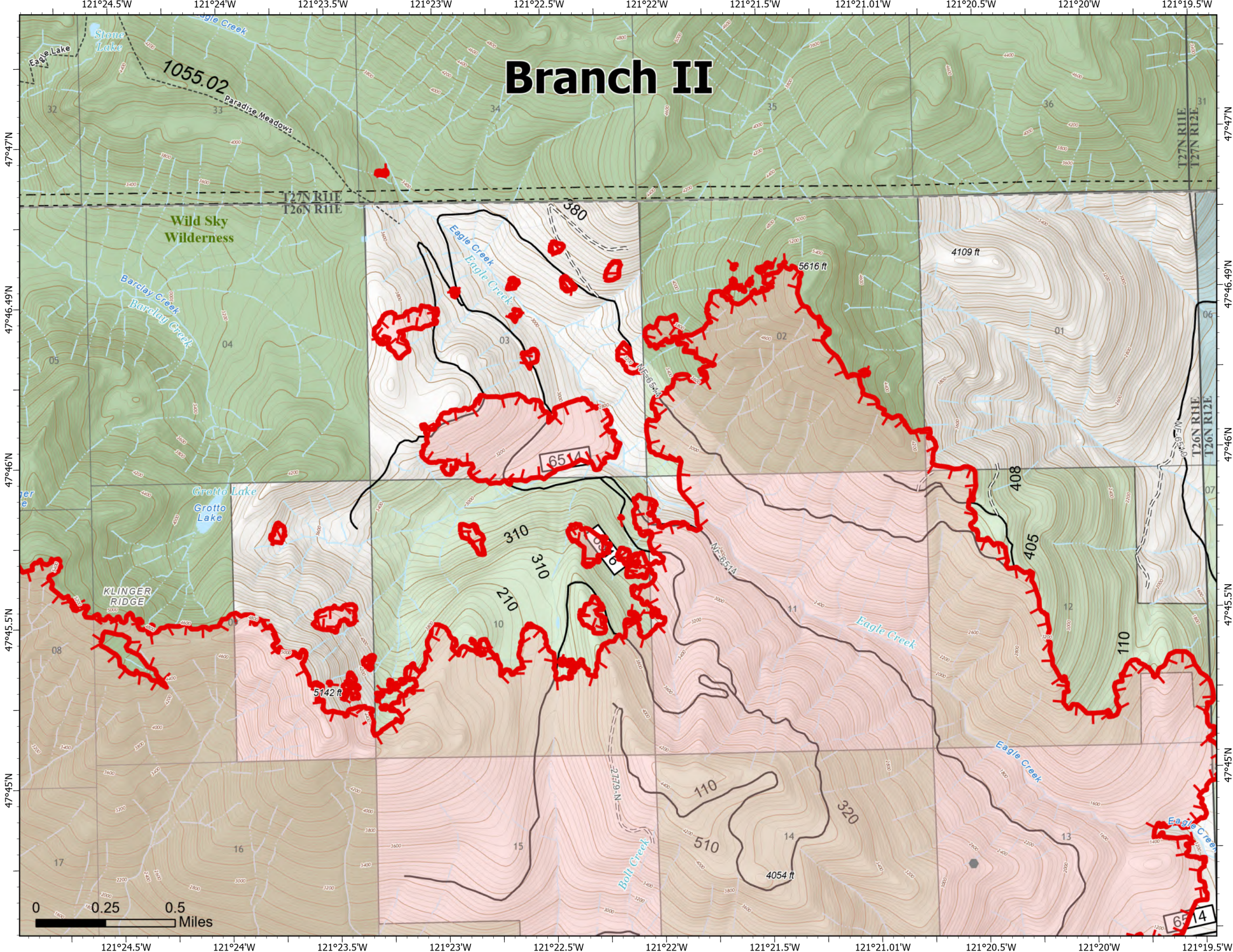


Page 9 of 14

- Other
- Uncontained
- Trail
- State
- US Forest Service (USFS)
- Private
- Open Roads
- Closed Roads
- Trail
- county
- Wilderness



Map updated:
9/20/2022 2057



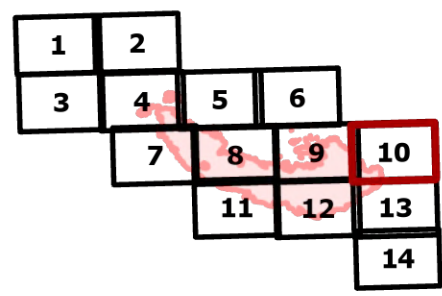
IAP

Bolt Creek

WA-NWS-000150

09/21/2022

10,193 acres at 09/19/2022 @1952

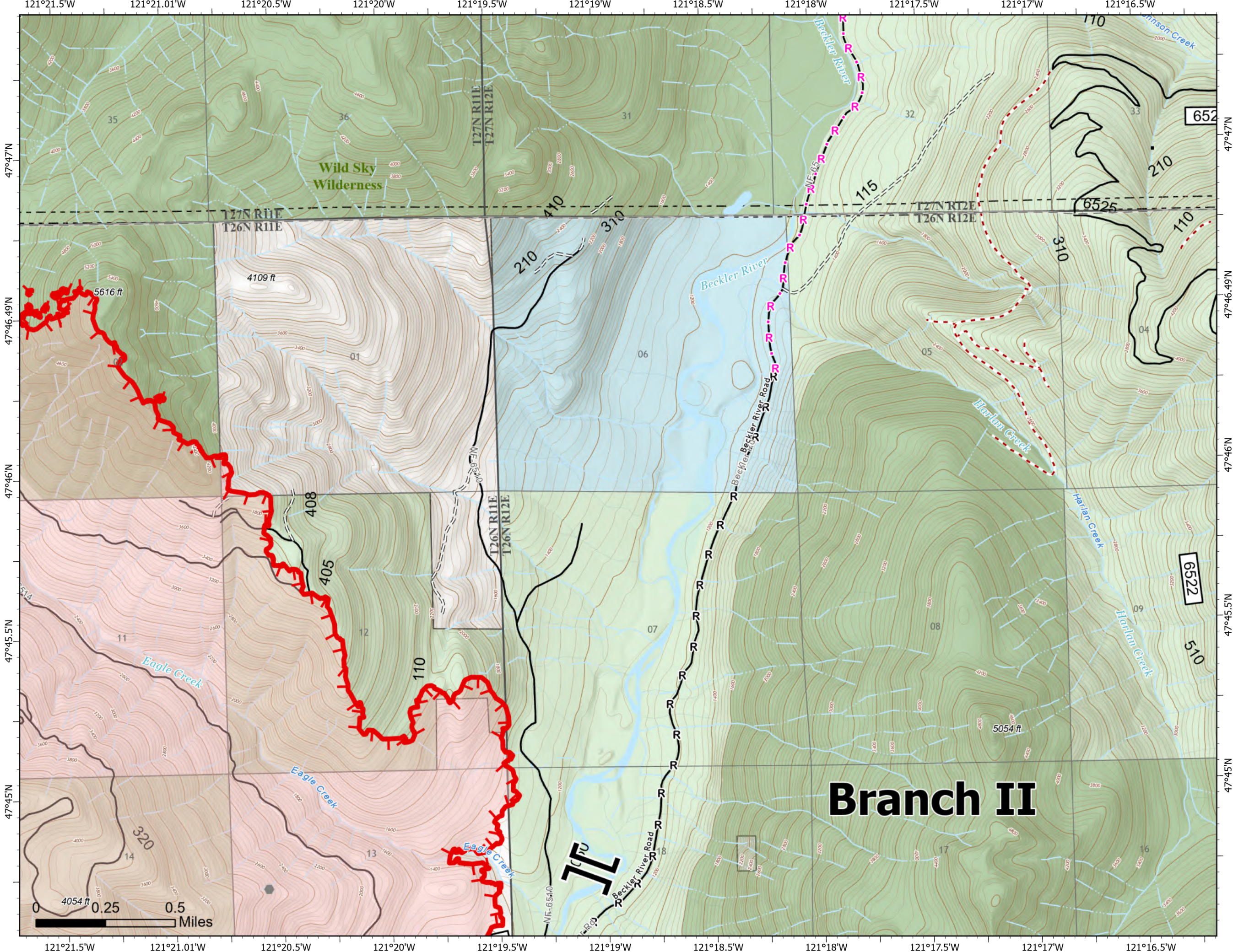


Page 10 of 14

- Branch Break
- Other
- structures
- Completed Road as Line
- Planned Road as Line
- Uncontained
- Trail
- State
- US Forest Service (USFS)
- Private
- Open Roads
- Closed Roads
- Decommissioned Roads
- Trail
- county
- Wilderness



Map updated:
9/20/2022 2058



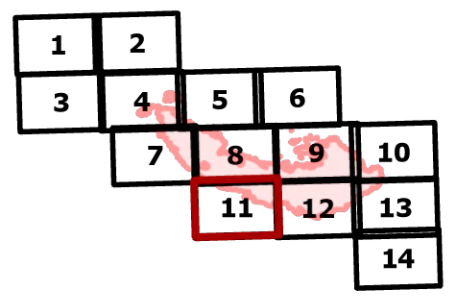
IAP

Bolt Creek

WA-NWS-000150

09/21/2022

10,193 acres at 09/19/2022 @1952

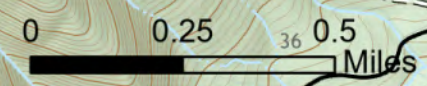
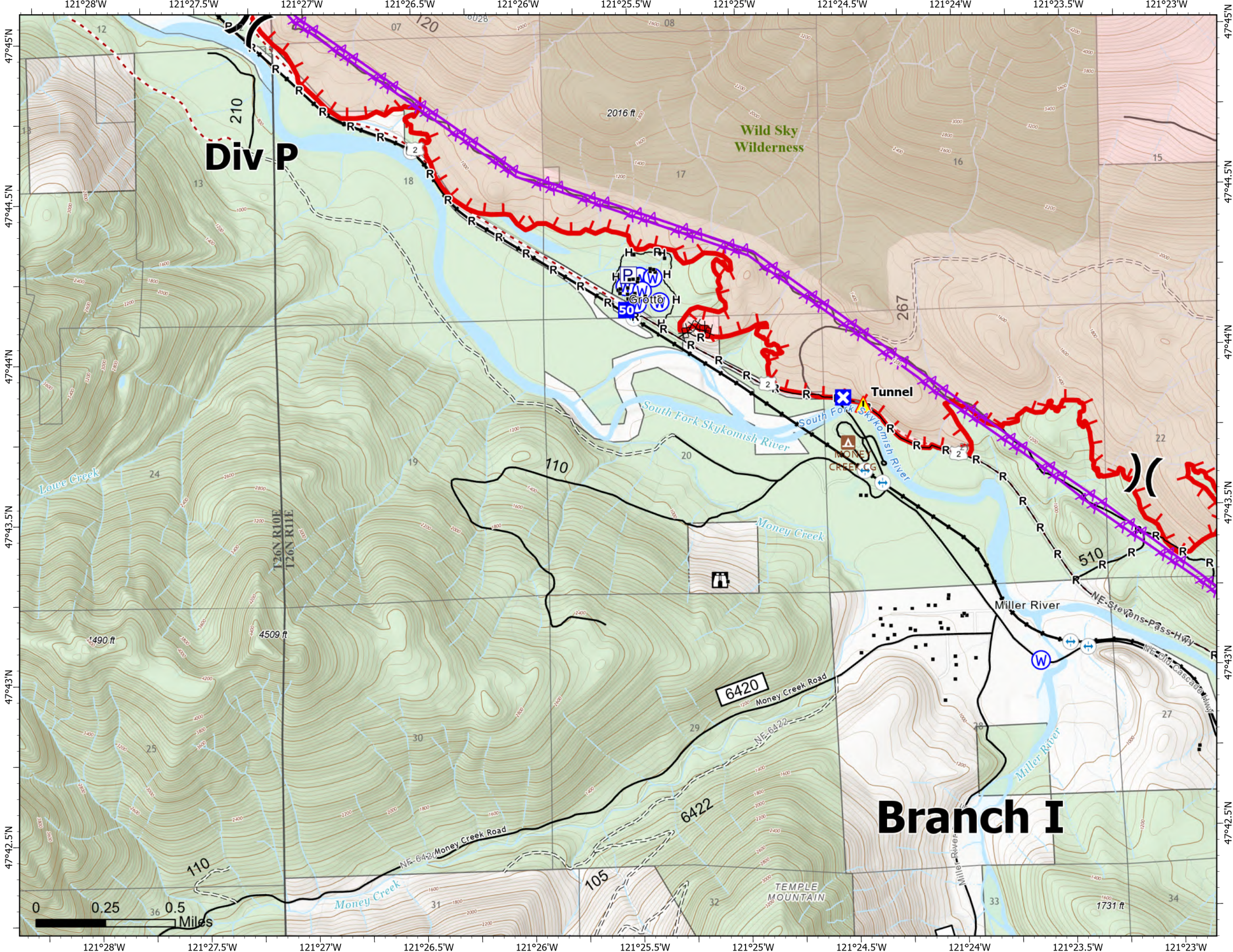


Page 11 of 14

- (X) Division Break
- Drop Point
- ⊠ Closure
- ⚠ Lookout
- ▲ Tunnel
- ⊙ Water Source
- structures
- ⊙ Pump
- ⊗ Completed Dozer Line
- H— Completed Hand Line
- R— Completed Road as Line
- Other
- ★ Aerial Hazard
- ┌─┐ Uncontained
- Trail
- US Forest Service (USFS)
- Private
- ▲ Campground
- ⊕ Bridges
- Railroads
- Open Roads
- == Closed Roads
- - - Decommissioned Roads
- Trail
- - - county
- Wilderness



Map updated:
9/20/2022 2058



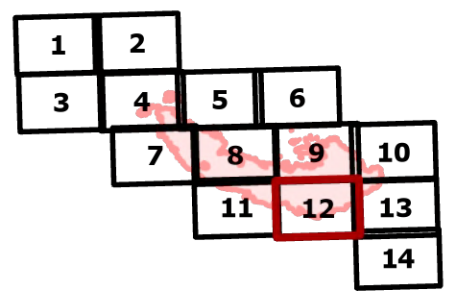
IAP

Bolt Creek

WA-NWS-000150

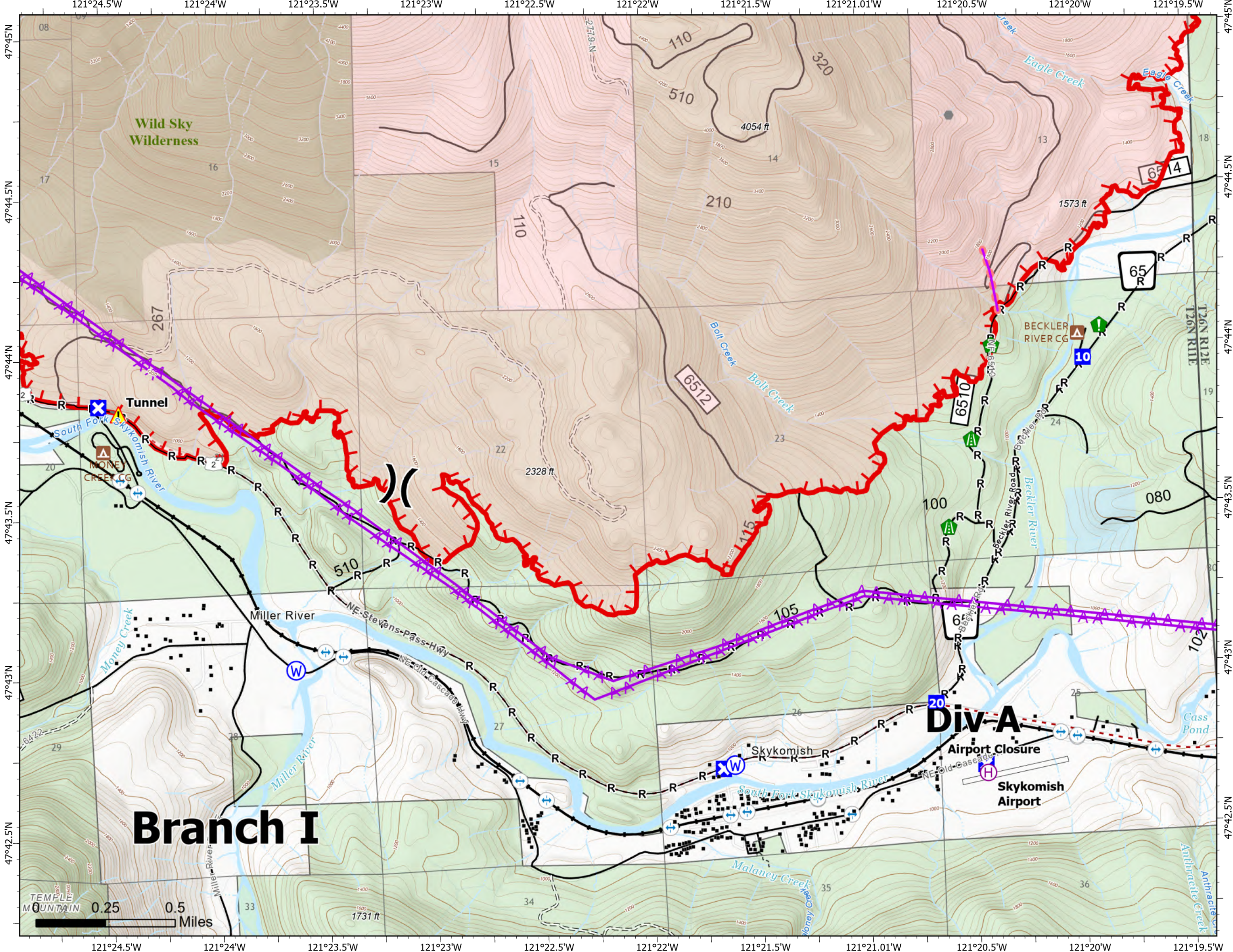
09/21/2022

10,193 acres at 09/19/2022 @1952



Page 12 of 14

- | | |
|--------------------------|----------------------------|
| ⊕ Helibase | --- Trail |
| ⌘ Division Break | ▭ Runway |
| ■ Drop Point | ▭ State |
| ⊠ Closure | ▭ US Forest Service (USFS) |
| ● Other | ▭ Private |
| 🛠 Road Repair | ⬆ Campground |
| 🌳 Resource Location | ⚙ Bridges |
| 🌳 Culvert | 🚂 Railroads |
| 🏠 Tunnel | — Open Roads |
| 🌊 Water Source | — Closed Roads |
| 🏠 structures | — Decommissioned Roads |
| — Completed Road as Line | --- Trail |
| — Other | ▭ Runway |
| 🚫 Aerial Hazard | ▭ county |
| 🚫 Retardant Drop | ▭ Wilderness |
| 🔴 Uncontained | |

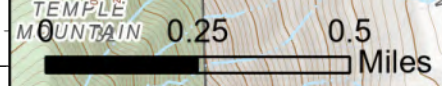


Branch I

Div-A
 Airport Closure
 Skykomish Airport



Map updated:
9/20/2022 2058



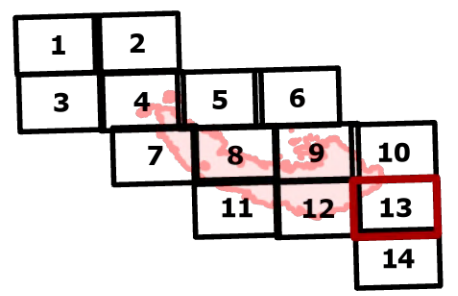
IAP

Bolt Creek

WA-NWS-000150

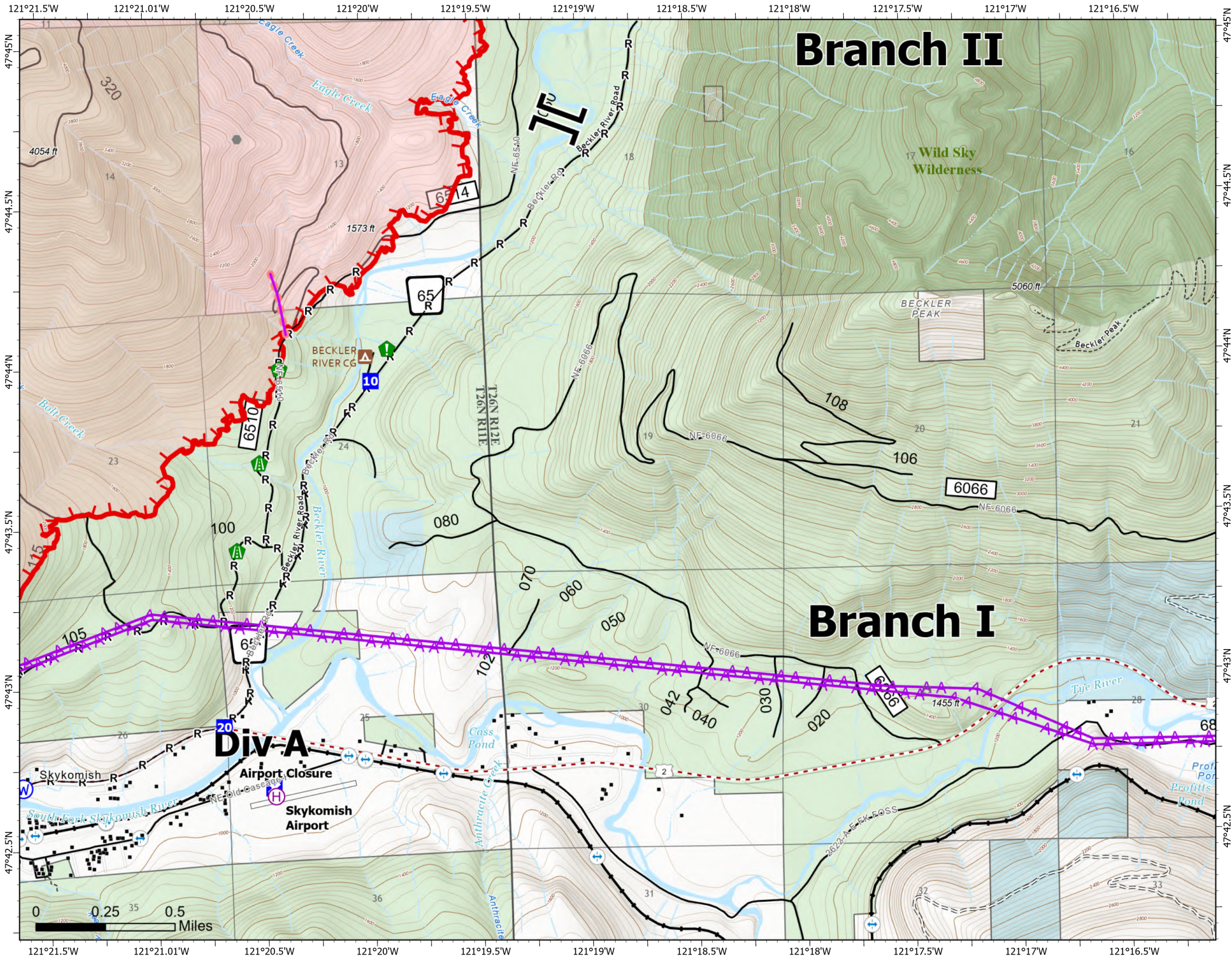
09/21/2022

10,193 acres at 09/19/2022 @1952



Page 13 of 14

- | | |
|------------------------|--------------------------|
| Helibase | Runway |
| Branch Break | State |
| Drop Point | US Forest Service (USFS) |
| Closure | Private |
| Other | Campground |
| Road Repair | Bridges |
| Resource Location | Railroads |
| Culvert | Open Roads |
| Water Source | Closed Roads |
| structures | Decommissioned Roads |
| Completed Road as Line | Trail |
| Aerial Hazard | Runway |
| Retardant Drop | county |
| Uncontained | Wilderness |
| Trail | |



Map updated: 9/20/2022 2059

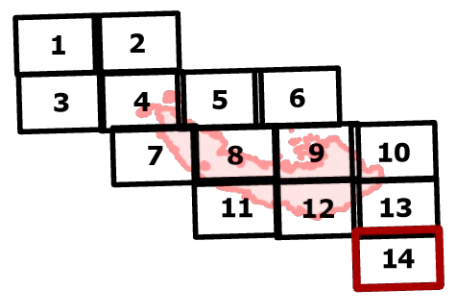
IAP

Bolt Creek

WA-NWS-000150

09/21/2022

10,193 acres at 09/19/2022 @1952

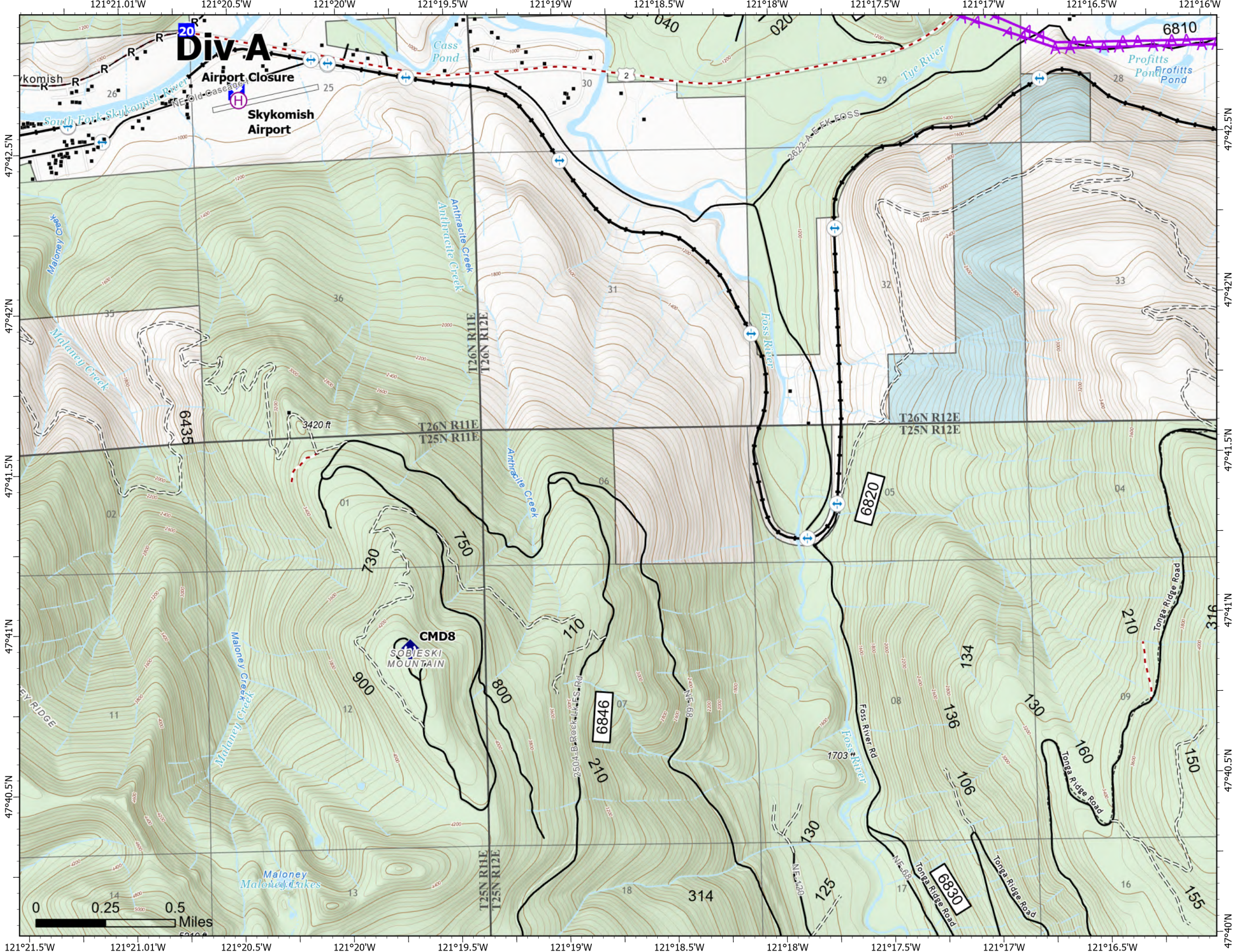


Page 14 of 14

- Helibase
- Drop Point
- Closure
- Repeater
- structures
- Completed Road as Line
- Aerial Hazard
- Trail
- Runway
- State
- US Forest Service (USFS)
- Private
- Bridges
- Railroads
- Open Roads
- Closed Roads
- Decommissioned Roads
- Decommissioned Roads
- Trail
- Runway
- county



Map updated:
9/20/2022 2059



Transportation

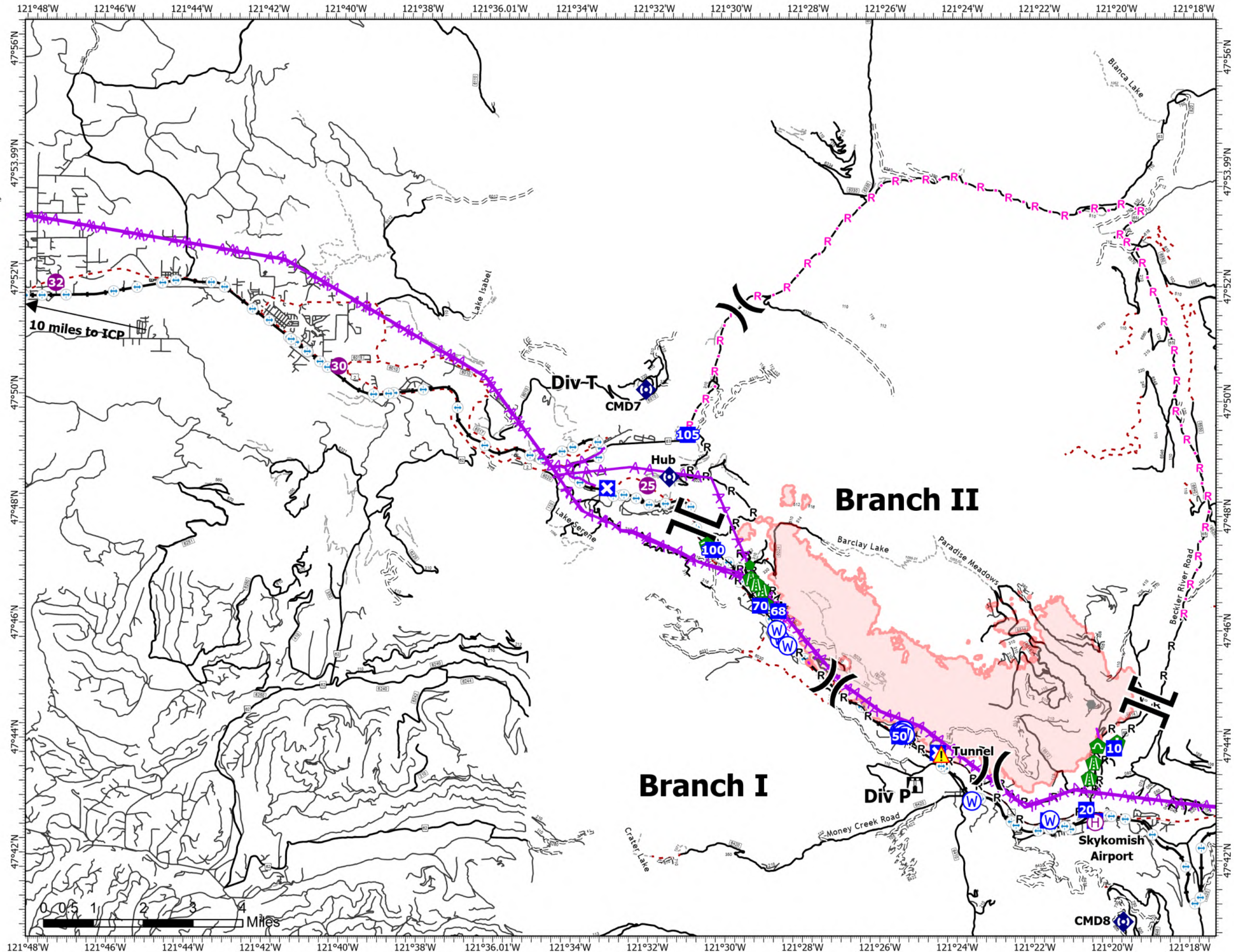
Bolt Creek

WA-NWS-000150

09/21/2022

10,193 acres at 09/19/2022 @1952

- | | |
|------------------------|-------------------------------------|
| ● Helispot | ⚡ Completed Fuel Break |
| ⊕ Helibase | — Completed Hand Line |
| ⌵ Division Break | — Completed Mixed Construction Line |
| ⌵ Branch Break | — Completed Road as Line |
| ⊠ Drop Point | — Planned Dozer Line |
| ⊠ Closure | — Planned Road as Line |
| ⊠ Lookout | — Other |
| ● Other | — Aerial Hazard |
| ● Fire Station | ● Retardant Drop |
| ● Bridge | — Secondary Hwy |
| ● Stream Crossing | — Local Road |
| ● Road Repair | — 4WD |
| ● Resource Location | — Trail |
| ● Repair Point | □ Runway |
| ● Culvert | ⚡ Bridges |
| ● Repeater | ⚡ Railroads |
| ● Tunnel | — Open Roads |
| ● Water Source | — Closed Roads |
| — Completed Burnout | — Decommissioned Roads |
| — Completed Dozer Line | — Decommissioned Roads |



Map Updated 9/20/2022 2103

