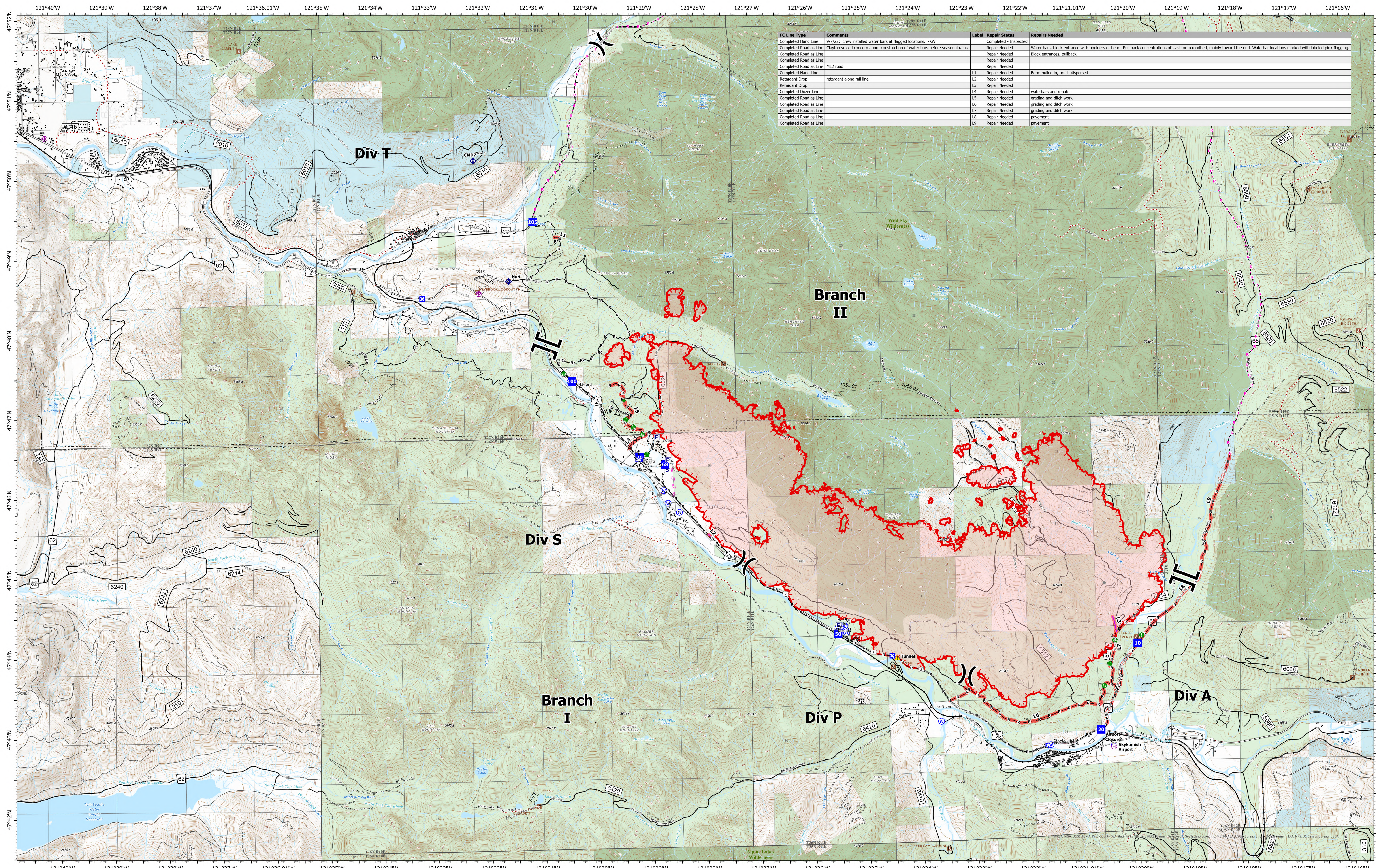


# Line Repair



FC Line Type	Comments	Label	Repair Status	Repairs Needed
Completed Hand Line	9/7/22: crew installed water bars at flagged locations. -KW		Completed - Inspected	
Completed Road as Line	Clayton voiced concern about construction of water bars before seasonal rains.		Repair Needed	Water bars, block entrance with boulders or berm. Pull back concentrations of slash onto roadbed, mainly toward the end. Waterbar locations marked with labeled pink flagging.
Completed Road as Line			Repair Needed	Block entrances, pullback
Completed Road as Line			Repair Needed	
Completed Road as Line	ML2 road		Repair Needed	
Completed Hand Line		L1	Repair Needed	Berm pulled in, brush dispersed
Retardant Drop	retardant along rail line	L2	Repair Needed	
Retardant Drop		L3	Repair Needed	
Completed Dozer Line		L4	Repair Needed	waterbars and rehab
Completed Road as Line		L5	Repair Needed	grading and ditch work
Completed Road as Line		L6	Repair Needed	grading and ditch work
Completed Road as Line		L7	Repair Needed	grading and ditch work
Completed Road as Line		L8	Repair Needed	pavement
Completed Road as Line		L9	Repair Needed	pavement

**Bolt Creek**  
**WA-NWS-000150**  
**09/21/2022**

10,193 acres at 09/19/2022 @ 1952

9/20/2022 2103

- Repair Needed
- Closure
- Repair Point
- Completed Hand Line
- Campground
- Trail
- Pump
- Lookout
- Culvert
- Completed Mixed Construction Line
- Lookout/Cabin
- county
- Water Tank
- Other
- ◆ Repeater
- Completed Road as Line
- Trailhead
- Wilderness
- Helispot
- Fire Station
- Planned Dozer Line
- Bureau of Land Management (BLM)
- Helibase
- Bridge
- Hazard
- Major Highways
- State
- Stream Crossing
- Water Source
- US Forest Service (USFS)
- Road Repair
- Completed Burnout
- Other
- Private
- Resource Location
- Completed Dozer Line
- Retardant Drop
- Decommissioned Roads
- Trans\_RoadSegment\_multipart
- Uncontained

