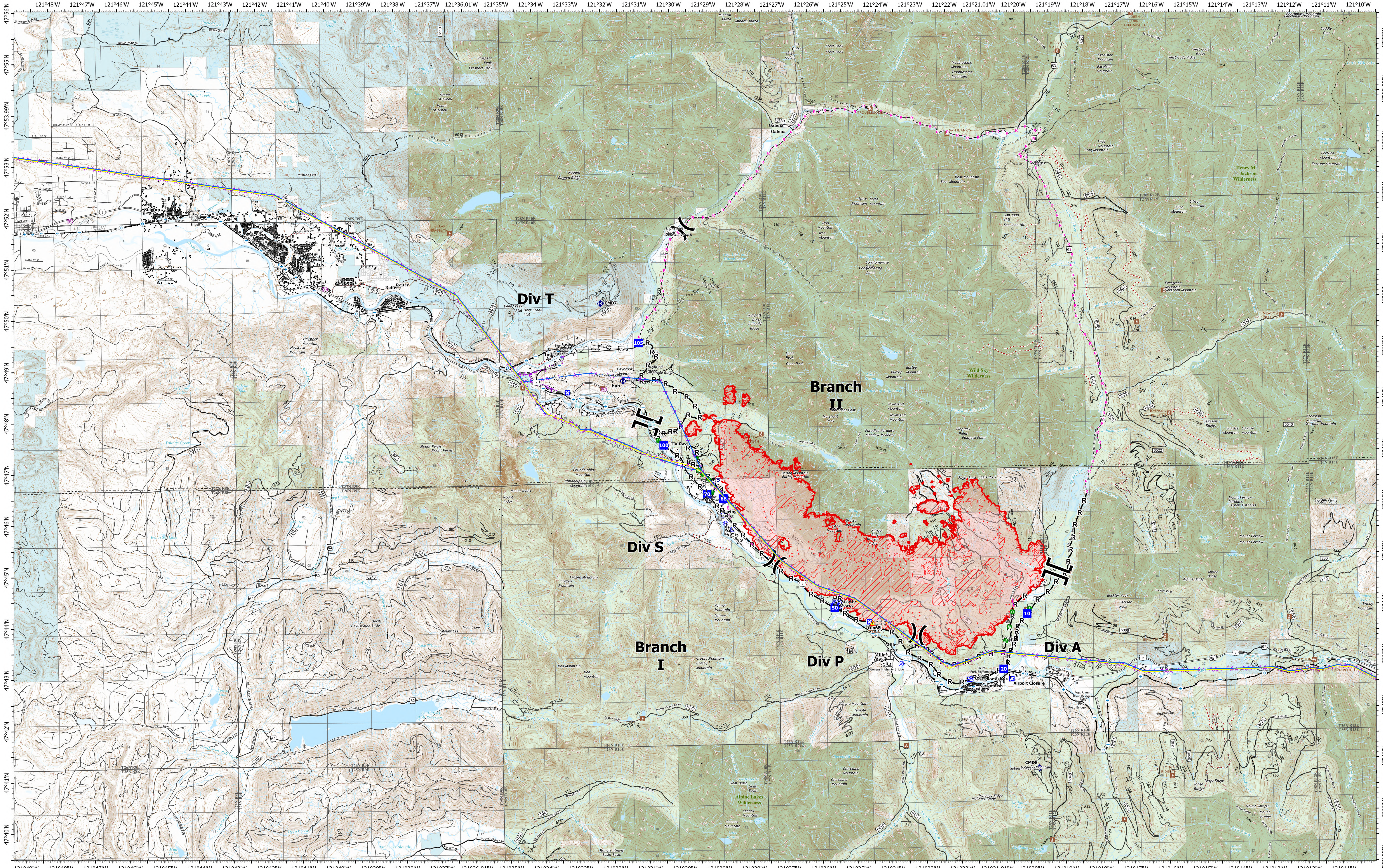


Operations



Bolt Creek
WA-NWS-000150
09/21/2022

10,193 acres at 09/19/2022 @ 1952

9/20/2022 2053

- IR Isolated Heat Source
- IR Heat Perimeter
- ▨ IR Intense Heat
- ▤ IR Scattered Heat
- ⊡ Pump
- ⊡ Water Tank
- ⊡ Division Break
- ⊡ Branch Break
- Drop Point
- ⊡ Closure
- ⊡ Lookout
- ⊡ Other
- ⊡ Fire Station
- ⊡ Bridge
- ⊡ Stream Crossing
- ⊡ Road Repair
- Resource Location
- Repair Point
- Culvert
- Repeater
- Hazard
- Water Source
- 345kv High Voltage
- 345kv High Voltage
- Planned Road as Line
- ⊡ Completed Burnout
- ⊡ Completed Dozer Line
- ⊡ Completed Fuel Break
- ⊡ Completed Hand Line
- ⊡ Completed Mixed Construction Line
- ⊡ Completed Road as Line
- Other
- ⊡ Aerial Hazard
- ⊡ Retardant Drop
- ⊡ Uncontaminated
- ⊡ Bridges
- ⊡ Campground
- ⊡ Day Use/Picnic
- ⊡ Lookout/Cabin
- ⊡ Trailhead
- ⊡ Railroads
- ⊡ Major Highways
- ⊡ Forest Service Open Roads
- ⊡ Forest Service Closed Roads
- ⊡ Forest Service Decommissioned Roads
- ⊡ Bridges
- ⊡ Railroads
- ⊡ county
- ⊡ Wilderness
- ⊡ Trail
- ⊡ Runway
- ⊡ Bureau of Land Management (BLM)
- ⊡ State
- ⊡ US Forest Service (USFS)
- ⊡ Private

