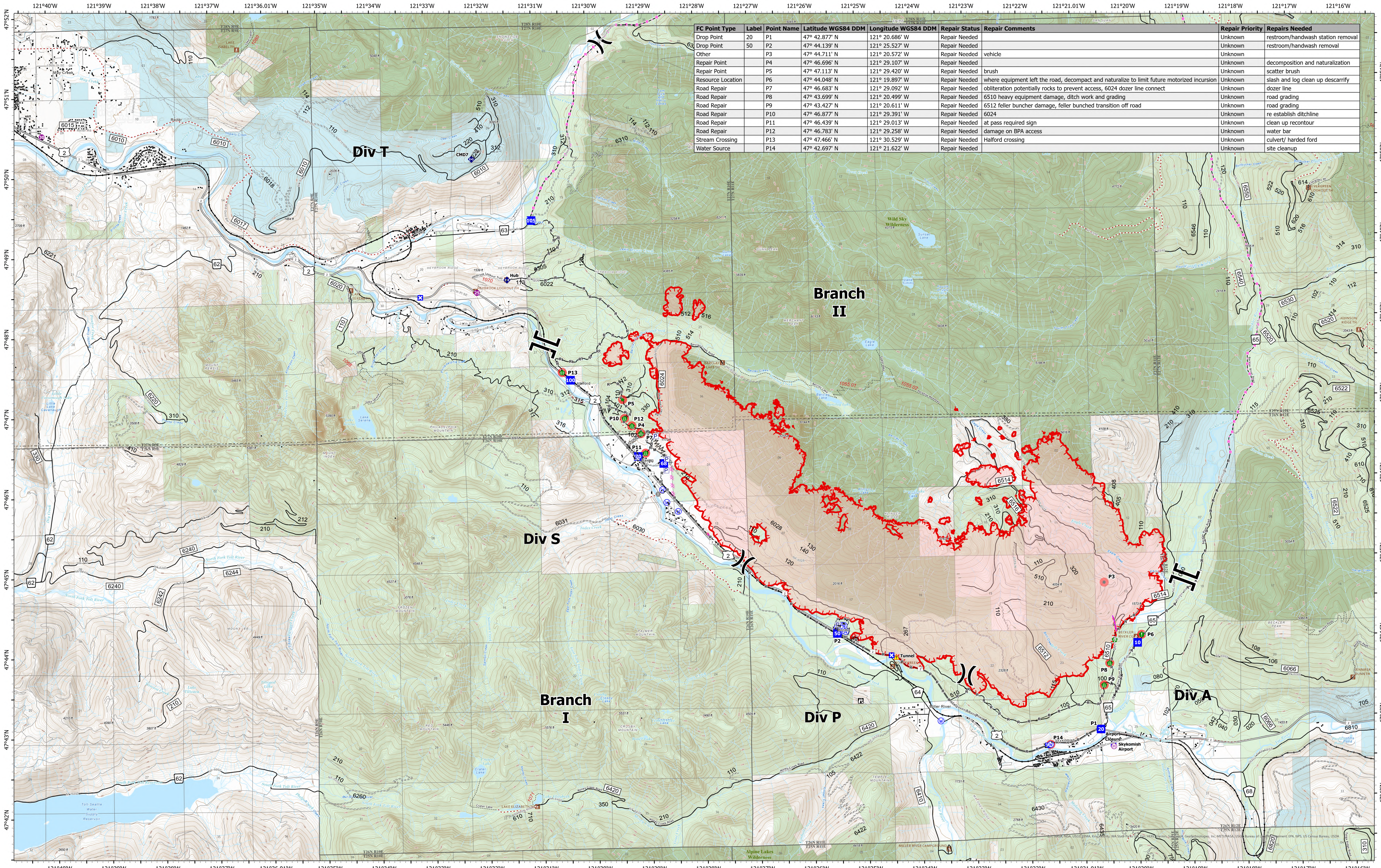


Point Repair



Bolt Creek
WA-NWS-000150
09/21/2022

10,193 acres at 09/19/2022 @ 1952

9/20/2022 2109

- Repair Needed
- Drop Point
- Resource Location
- M Completed Fuel Break
- Uncontained
- Pump
- Closure
- Repair Point
- M Completed Hand Line
- Campground
- Water Tank
- Lookout
- Culvert
- M Completed Mixed Construction Line
- Lookout/Cabin
- Helispot
- Other
- Repeater
- M Completed Road as Line
- Trailhead
- Helibase
- Fire Station
- M Planned Dozer Line
- Railroad
- Division Break
- Bridge
- M Planned Road as Line
- Major Highways
- Branch Break
- Stream Crossing
- M Other
- Open Roads
- Completed Burnout
- M Retardant Drop
- Road Repair
- M Completed Dozer Line
- Closed Roads
- M Private
- M Decommissioned Roads
- M Trail
- M Wilderness
- M Bureau of Land Management (BLM)
- M US Forest Service (USFS)

