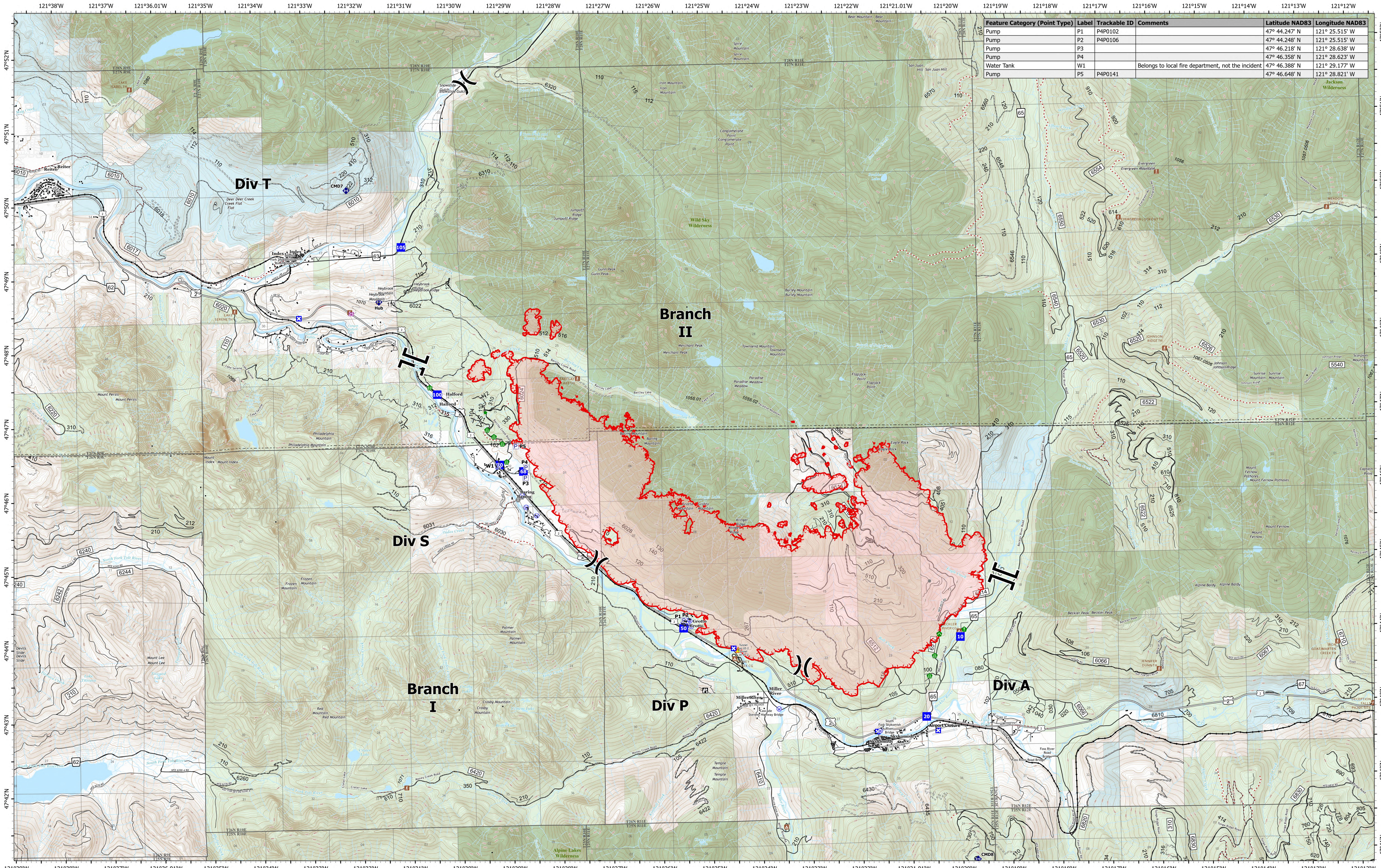


Pump Locations



Bolt Creek
WA-NWS-000150
09/20/2022

10,193 acres at 09/19/2022 @ 1952

- Pump
- Water Tank
- Division Break
- Branch Break
- Drop Point
- Closure
- Lookout
- Other
- Fire Station
- Bridge
- Stream Crossing
- Road Repair
- Resource Location
- Repair Point
- Culvert
- Repeater
- Hazard
- Water Source
- Uncontained
- Campground
- Day Use/Picnic
- Lookout/Cabin
- Trailhead
- Railroads
- Major Highways
- Forest Service Open Roads
- Forest Service Closed Roads
- Forest Service Decommissioned Roads
- US Forest Service (USFS)
- Private
- Wilderness
- Trail
- Runway
- Bureau of Land Management (BLM)
- State