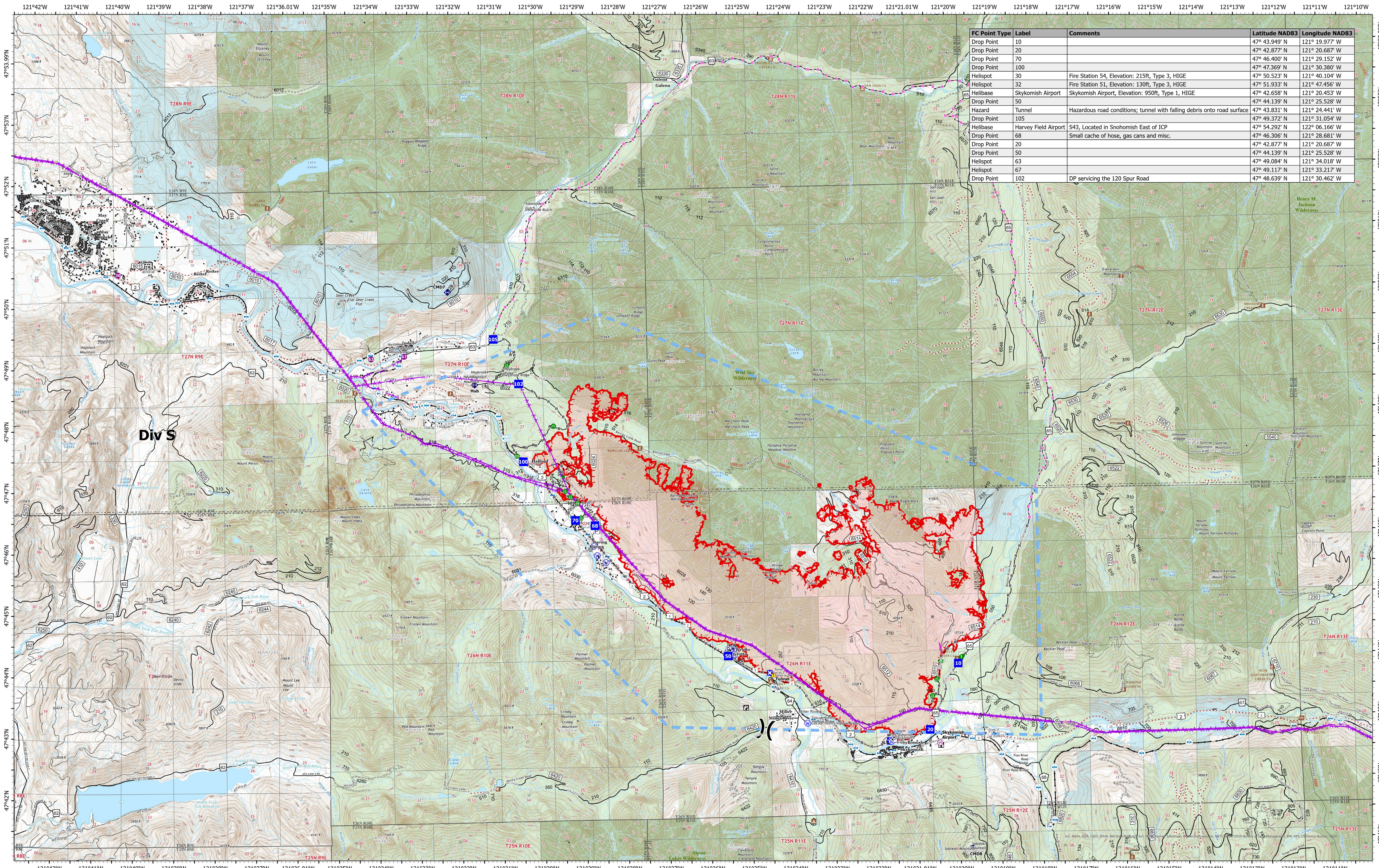


Communications



FC Point Type	Label	Comments	Latitude NAD83	Longitude NAD83
Drop Point	10		47° 43.949' N	121° 19.977' W
Drop Point	20		47° 42.877' N	121° 20.687' W
Drop Point	70		47° 46.400' N	121° 29.152' W
Drop Point	100		47° 47.369' N	121° 30.380' W
Helispot	30	Fire Station 54, Elevation: 215ft, Type 3, HIGE	47° 50.523' N	121° 40.104' W
Helispot	32	Fire Station 51, Elevation: 130ft, Type 3, HIGE	47° 51.933' N	121° 47.456' W
Helibase	Skylomish Airport	Skylomish Airport, Elevation: 950ft, Type 1, HIGE	47° 42.658' N	121° 20.453' W
Drop Point	50		47° 44.139' N	121° 25.528' W
Hazard	Tunnel	Hazardous road conditions; tunnel with falling debris onto road surface	47° 43.831' N	121° 24.441' W
Drop Point	105		47° 49.372' N	121° 31.054' W
Helibase	Harvey Field Airport	S43, Located in Snohomish East of ICP	47° 54.292' N	122° 06.166' W
Drop Point	68	Small cache of hose, gas cans and misc.	47° 46.306' N	121° 28.681' W
Drop Point	20		47° 42.877' N	121° 20.687' W
Drop Point	50		47° 44.139' N	121° 25.528' W
Helispot	63		47° 49.084' N	121° 34.018' W
Helispot	67		47° 49.117' N	121° 33.217' W
Drop Point	102	DP servicing the 120 Spur Road	47° 48.639' N	121° 30.462' W

Div S

Bolt Creek
WA-NWS-000150
10/06/2022

12,863 acres at 10/04/2022 @2100

10/6/2022 0745

- Pump
- Water Tank
- Helispot
- Helibase
- Division Break
- Medical
- Drop Point
- Closure
- Lookout
- Culvert
- Fire Station
- Bridge
- Stream Crossing
- Road Repair
- Resource Location
- Repair Point
- Other
- Repeater
- Hazard
- Water Source
- Completed Burnout
- Completed Dozer Line
- Completed Fuel Break
- Completed Hand Line
- Completed Mixed Construction Line
- Completed Road as Line
- Planned Dozer Line
- Planned Road as Line
- Other
- Aerial Hazard
- Retardant Drop
- Temporary Flight Restriction
- Uncontained
- Campground
- Day Use/Picnic
- Lookout/Cabin
- Trailhead
- Bridges
- Railroads
- Forest Service Open Roads
- Forest Service Closed Roads
- Forest Service Decommissioned Roads
- Decommissioned Roads
- Trail
- county
- Wilderness
- Bureau of Land Management (BLM)
- State
- US Forest Service (USFS)
- Private

