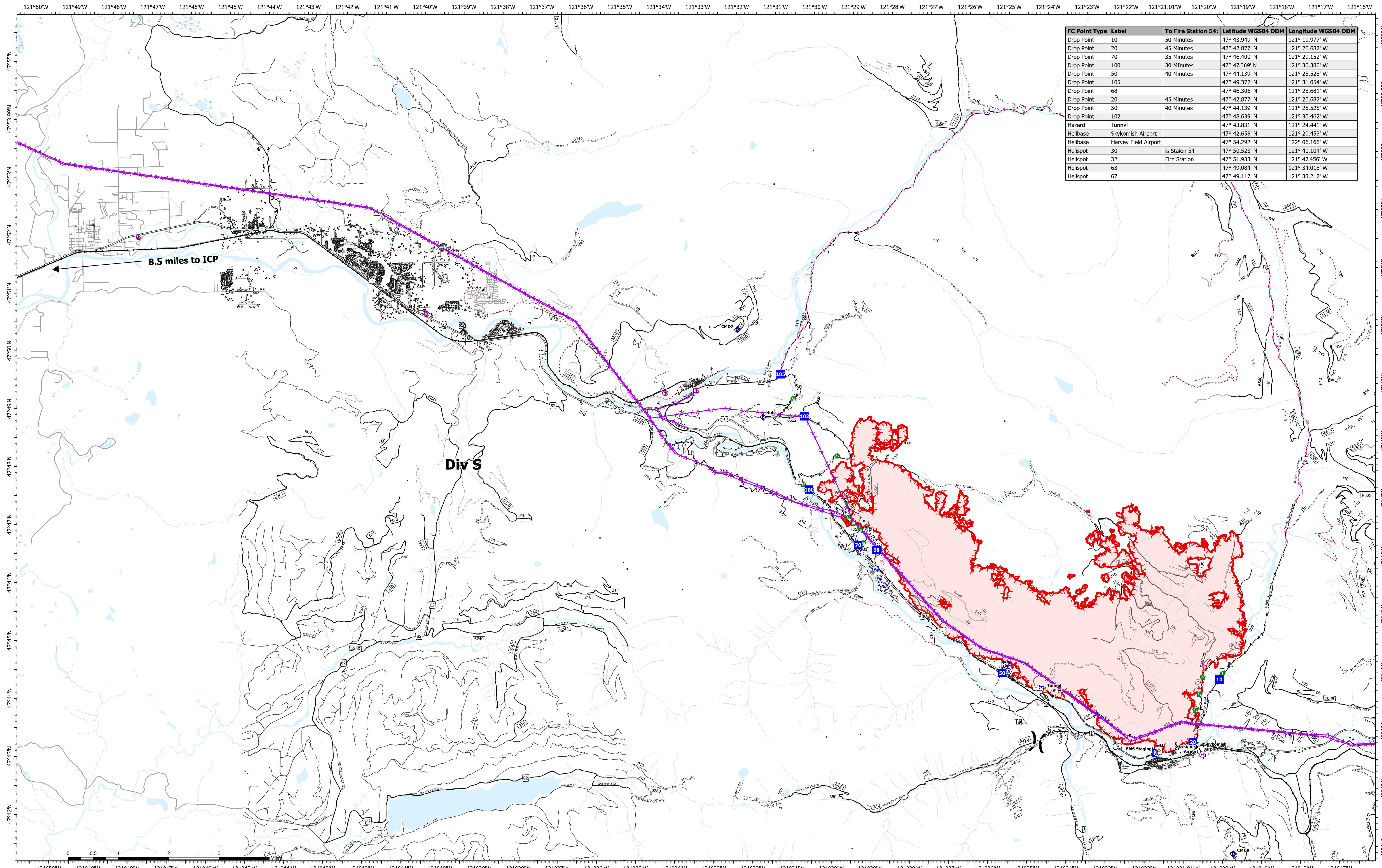


Medical Transportation



FC Point Type	Label	To Fire Station 54:	Latitude WGS84 DDM	Longitude WGS84 DDM
Drop Point	10	50 Minutes	47° 43.949' N	121° 19.977' W
Drop Point	20	45 Minutes	47° 42.877' N	121° 20.687' W
Drop Point	70	35 Minutes	47° 46.400' N	121° 29.152' W
Drop Point	100	30 Minutes	47° 47.369' N	121° 30.380' W
Drop Point	50	40 Minutes	47° 44.139' N	121° 25.528' W
Drop Point	105		47° 49.372' N	121° 31.054' W
Drop Point	68		47° 46.306' N	121° 28.681' W
Drop Point	20	45 Minutes	47° 42.877' N	121° 20.687' W
Drop Point	50	40 Minutes	47° 44.139' N	121° 25.528' W
Drop Point	102		47° 48.639' N	121° 30.462' W
Hazard	Tunnel		47° 43.831' N	121° 24.441' W
Helibase	Skykomish Airport		47° 42.658' N	121° 20.453' W
Helibase	Harvey Field Airport		47° 54.292' N	122° 06.166' W
Helispot	30	is Station 54	47° 50.523' N	121° 40.104' W
Helispot	32	Fire Station	47° 51.933' N	121° 47.456' W
Helispot	63		47° 49.084' N	121° 34.018' W
Helispot	67		47° 49.117' N	121° 33.217' W

8.5 miles to ICP

Div S

Bolt Creek
WA-NWS-000150
10/07/2022
 12,863 acres at 10/04/2022 @2100
 Map Updated:
 10/6/2022 0744

- Pump
- Water Tank
- Lookout
- Helibase
- Division Break
- Medical
- Drop Point
- Closure
- Lookout
- Other
- Fire Station
- Bridge
- Stream Crossing
- Road Repair
- Resource Location
- Repair Point
- Culvert
- Repeater
- Hazard
- Water Source
- Completed Burnout
- Completed Dozer Line
- Completed Fuel Break
- Completed Hand Line
- Completed Mixed Construction Line
- Completed Road as Line
- Planned Dozer Line
- Planned Road as Line
- Other
- Aerial Hazard
- Retardant Drop
- Uncontained
- Trail
- Railroads
- Open Roads
- Closed Roads
- Decommissioned Roads
- Major Highways

