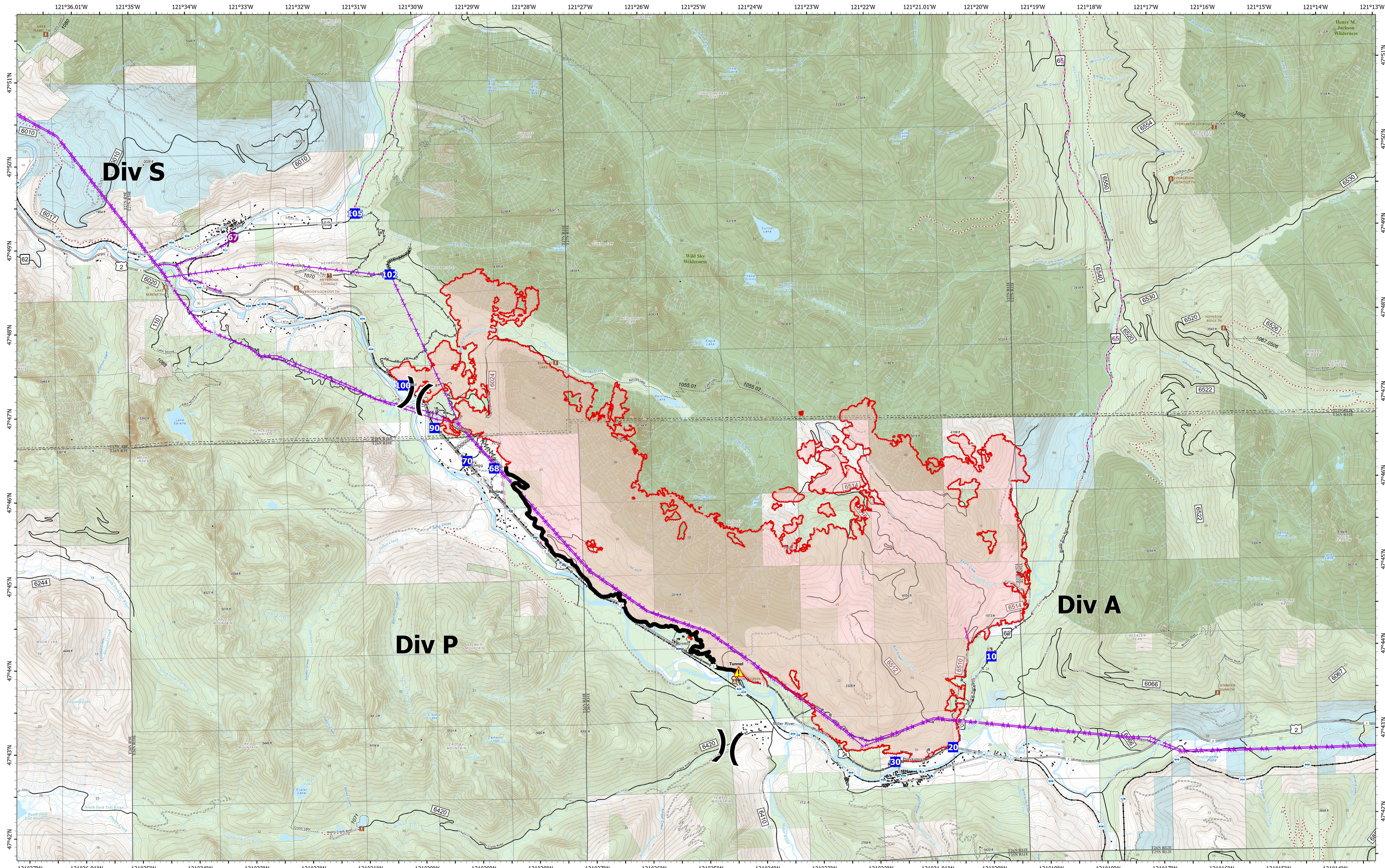


# Briefing



**Bolt Creek**  
**WA-NWS-000150**  
**10/12/2022**

13,503 acres at 10/09/2022 @2142

10/11/2022 2249

- |                  |                 |                                       |                                   |                          |
|------------------|-----------------|---------------------------------------|-----------------------------------|--------------------------|
| ● Helispot       | Uncontained     | Trailhead                             | Trail                             | US Forest Service (USFS) |
| ✕ Division Break | ⚙ Bridges       | — Railroads                           | — county                          | Private                  |
| ▲ Drop Point     | ⛺ Campground    | — Forest Service Open Roads           | — Wilderness                      | MajorHighways            |
| ⚙ Tunnel         | 🏠 Lookout/Cabin | — Forest Service Closed Roads         | — Bureau of Land Management (BLM) |                          |
| ■ Contained      |                 | — Forest Service Decommissioned Roads | — State                           |                          |