

IAP

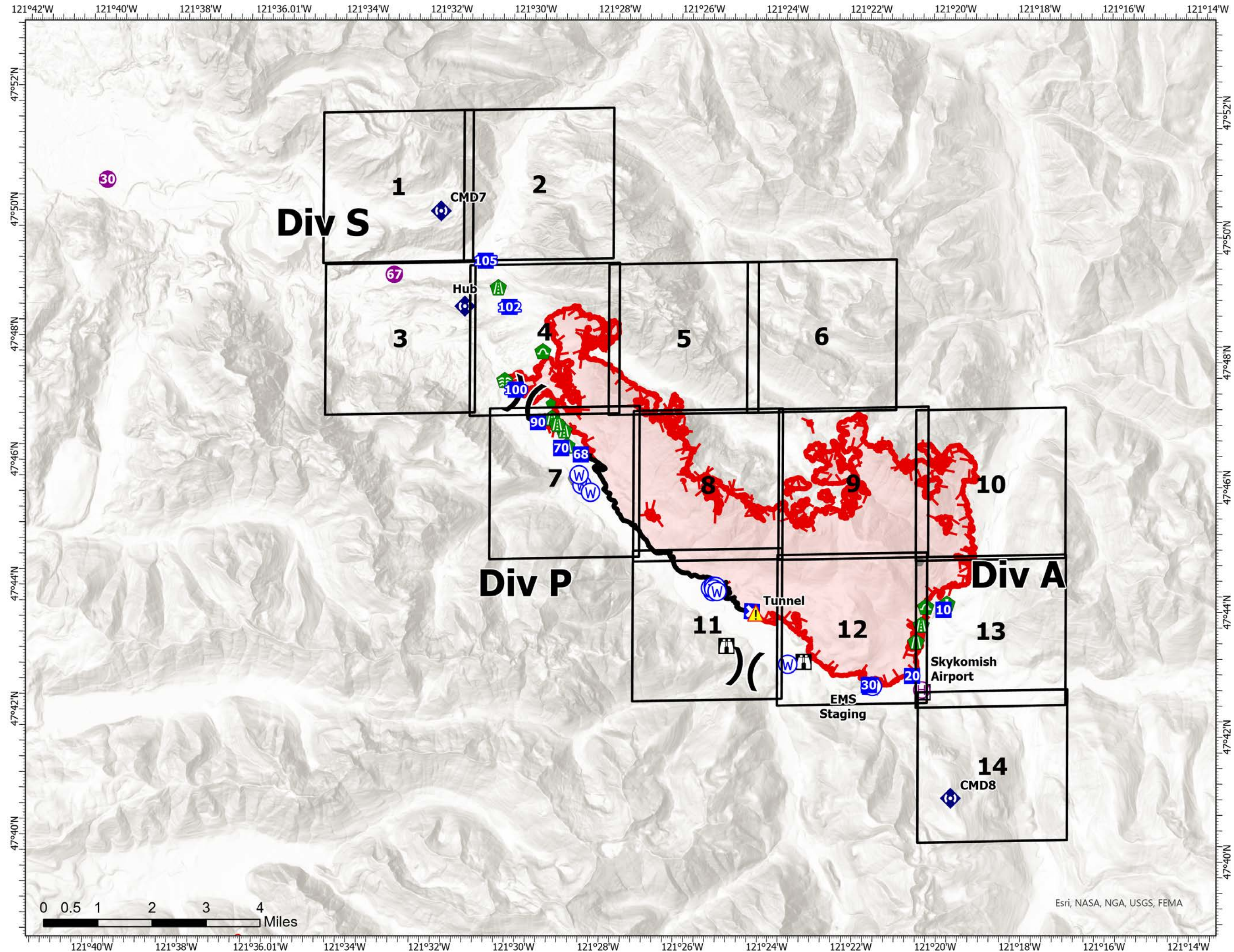
Bolt Creek

WA-NWS-000150

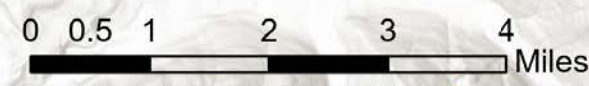
10/12/2022

13,503 acres at 10/09/2022 @2142

- Helispot
- ⊕ Helibase
-) Division Break
- + Medical
- Drop Point
- ✕ Closure
- Ⓜ Lookout
- Hot Spot - Spot Fire
- Other
- Ⓜ Fire Station
- Ⓜ Bridge
- Ⓜ Stream Crossing
- Ⓜ Road Repair
- Ⓜ Resource Location
- Ⓜ Repair Point
- Ⓜ Culvert
- Ⓜ Repeater
- Ⓜ Tunnel
- Ⓜ Water Source
- Contained
- Uncontained



Map updated:
10/11/2022 2302



Esri, NASA, NGA, USGS, FEMA

121°35.5'W 121°35'W 121°34.5'W 121°34'W 121°33.5'W 121°33'W 121°32.5'W 121°32'W 121°31.5'W 121°31'W 121°30.5'W

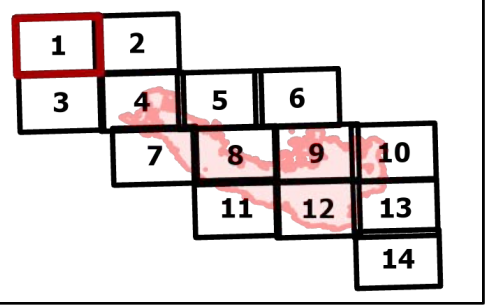
IAP

Bolt Creek

WA-NWS-000150

10/12/2022

13,503 acres at 10/09/2022 @2142

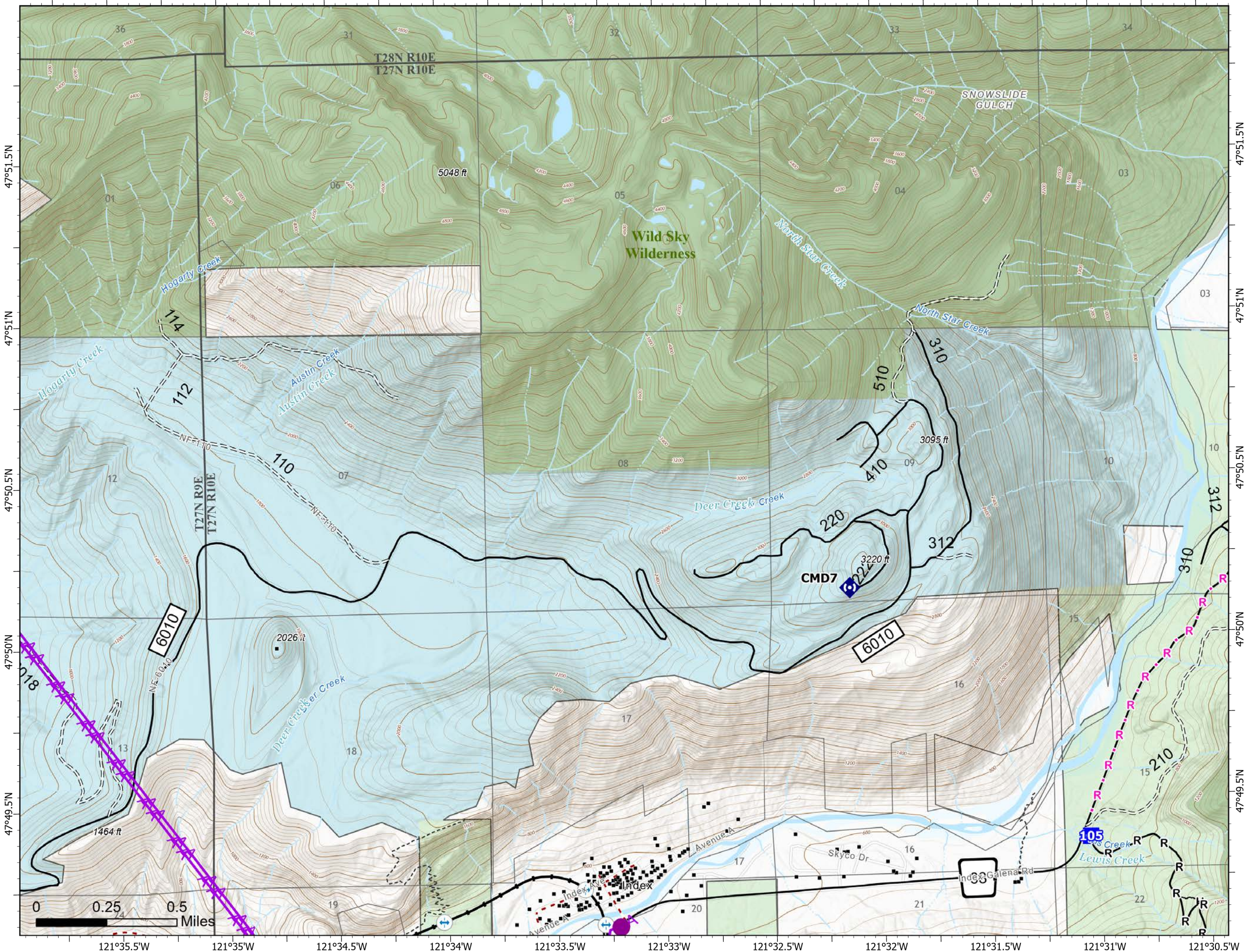


Page 1 of 14

- Helispot
- Drop Point
- Ⓜ Repeater
- structures
- Label Point
- H— Completed Hand Line
- R— Completed Road as Line
- R· Planned Road as Line
- ▲ Aerial Hazard
- - - Trail
- Ⓜ Bridges
- Ⓜ Railroads
- Open Roads
- - - Closed Roads
- - - Decommissioned Roads
- - - Trail
- - - county
- Wilderness
- State
- US Forest Service (USFS)
- Private
- Undetermined



Map updated:
10/11/2022 2304



47°51.5'N
47°51'N
47°50.5'N
47°50'N
47°49.5'N

47°51.5'N
47°51'N
47°50.5'N
47°50'N
47°49.5'N

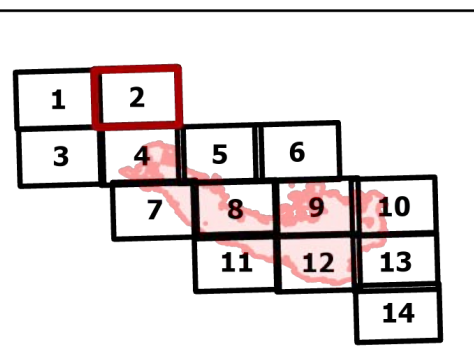
IAP

Bolt Creek

WA-NWS-000150

10/12/2022

13,503 acres at 10/09/2022 @2142

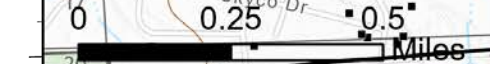
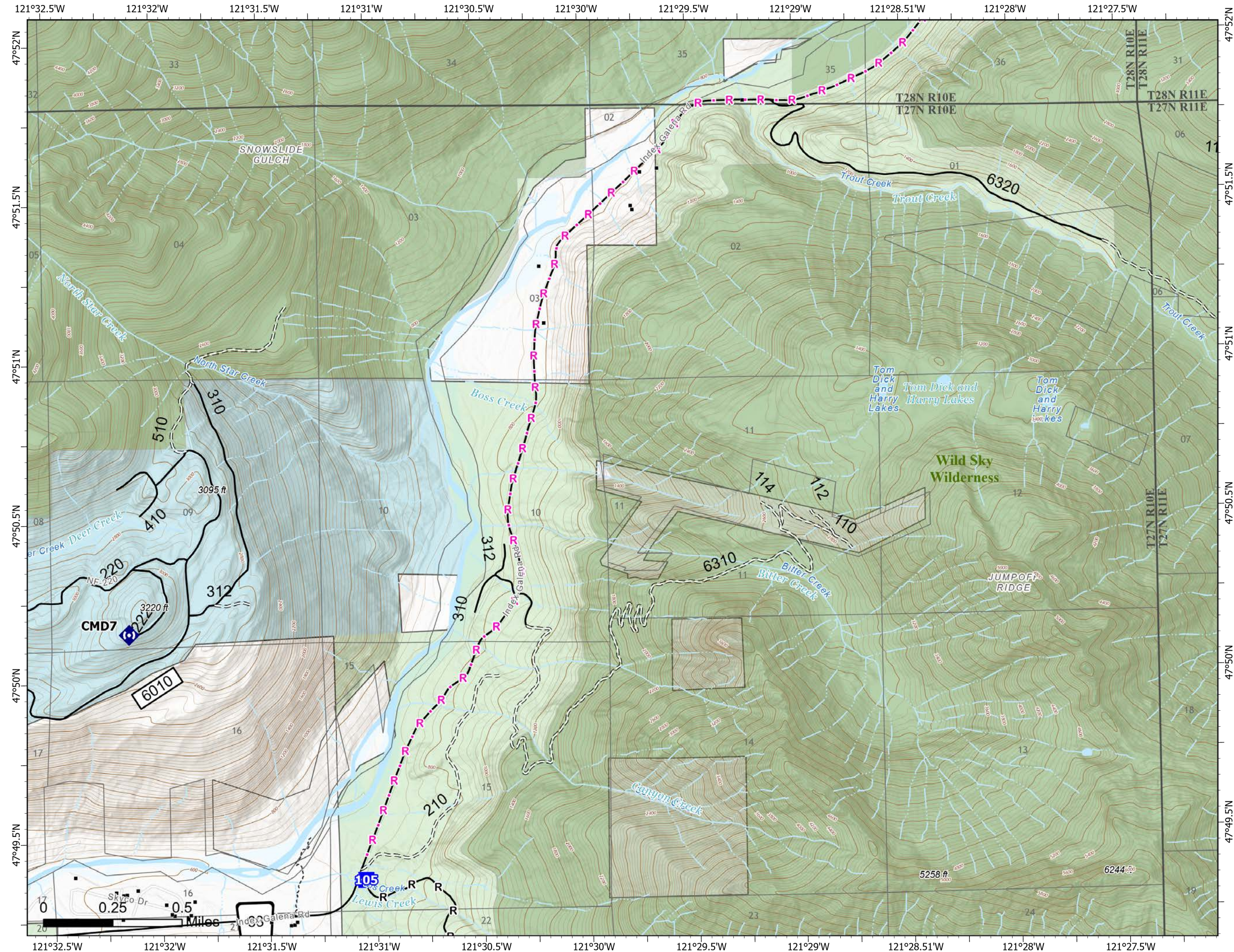


Page 2 of 14

- Drop Point
- Repeater
- structures
- Completed Hand Line
- Completed Road as Line
- Planned Road as Line
- Trail
- Open Roads
- Closed Roads
- Trail
- county
- Wilderness
- State
- US Forest Service (USFS)
- Private
- Undetermined



Map updated:
10/11/2022 2304



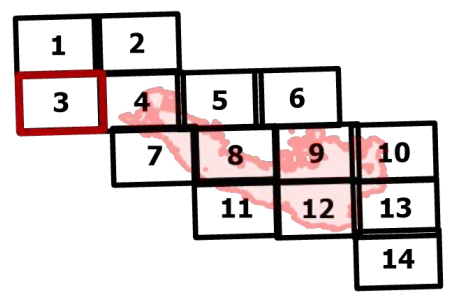
IAP

Bolt Creek

WA-NWS-000150

10/12/2022

13,503 acres at 10/09/2022 @2142

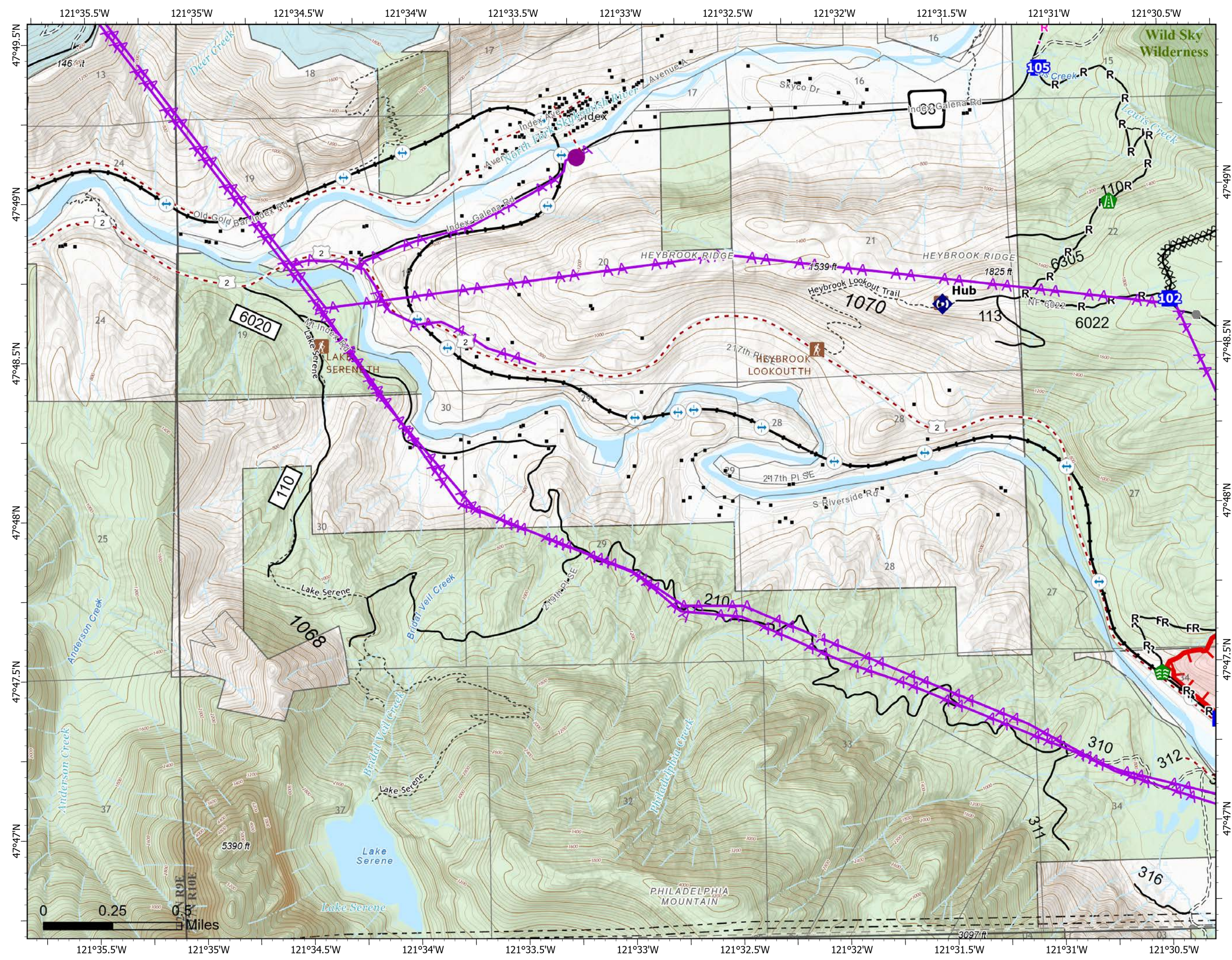


Page 3 of 14

- Helispot
- Drop Point
- Other
- Stream Crossing
- Road Repair
- Repeater
- structures
- Completed Dozer Line
- Completed Hand Line
- Completed Road as Line
- Planned Road as Line
- Aerial Hazard
- Uncontained
- Trail
- LOOKOUT/CABIN
- TRAILHEAD
- Bridges
- Railroads
- Open Roads
- Closed Roads
- Decommissioned Roads
- Trail
- county
- Wilderness
- State
- US Forest Service (USFS)
- Private
- Undetermined



Map updated:
10/11/2022 2304



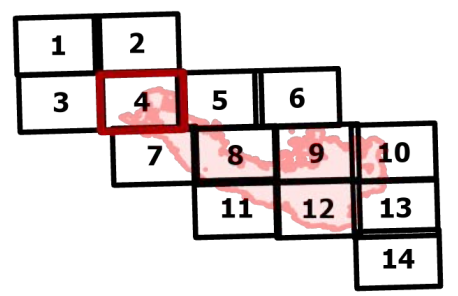
IAP

Bolt Creek

WA-NWS-000150

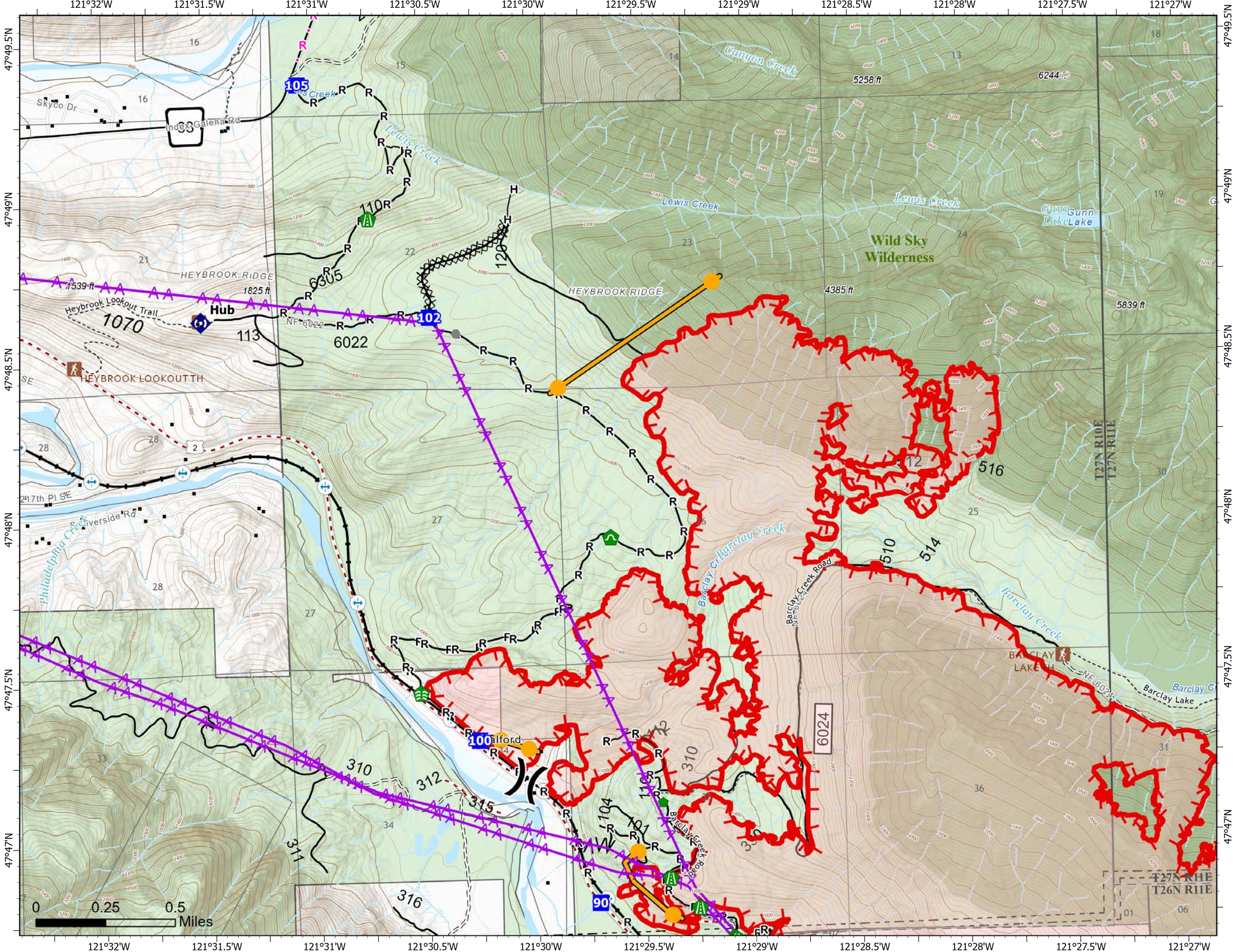
10/12/2022

13,503 acres at 10/09/2022 @2142



Page 4 of 14

- | | | |
|---|-------------------------|--------------------------|
| X | Division Break | Uncontained |
| ■ | Drop Point | Trail |
| ● | Other | LOOKOUT/CABIN |
| ⊗ | Stream Crossing | TRAILHEAD |
| ⊕ | Road Repair | Bridges |
| ⊖ | Repair Point | Railroads |
| ⊙ | Culvert | Open Roads |
| ⊚ | Repeater | Closed Roads |
| ■ | structures | Decommissioned Roads |
| ⊗ | Completed Dozer Line | Decommissioned Roads |
| ⊕ | Completed Fuel Break | Trail |
| H | Completed Hand Line | county |
| R | Completed Road as Line | Wilderness |
| R | Planned Road as Line | US Forest Service (USFS) |
| ■ | Management Action Point | Private |
| ⊗ | Aerial Hazard | Undetermined |



Map updated:
10/11/2022 2304



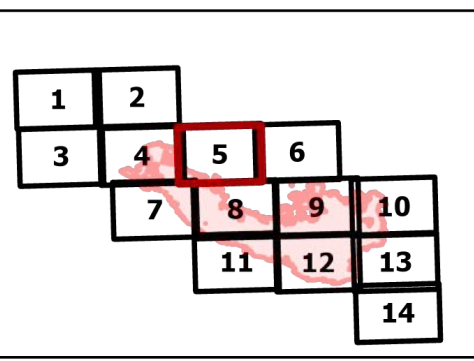
IAP

Bolt Creek

WA-NWS-000150

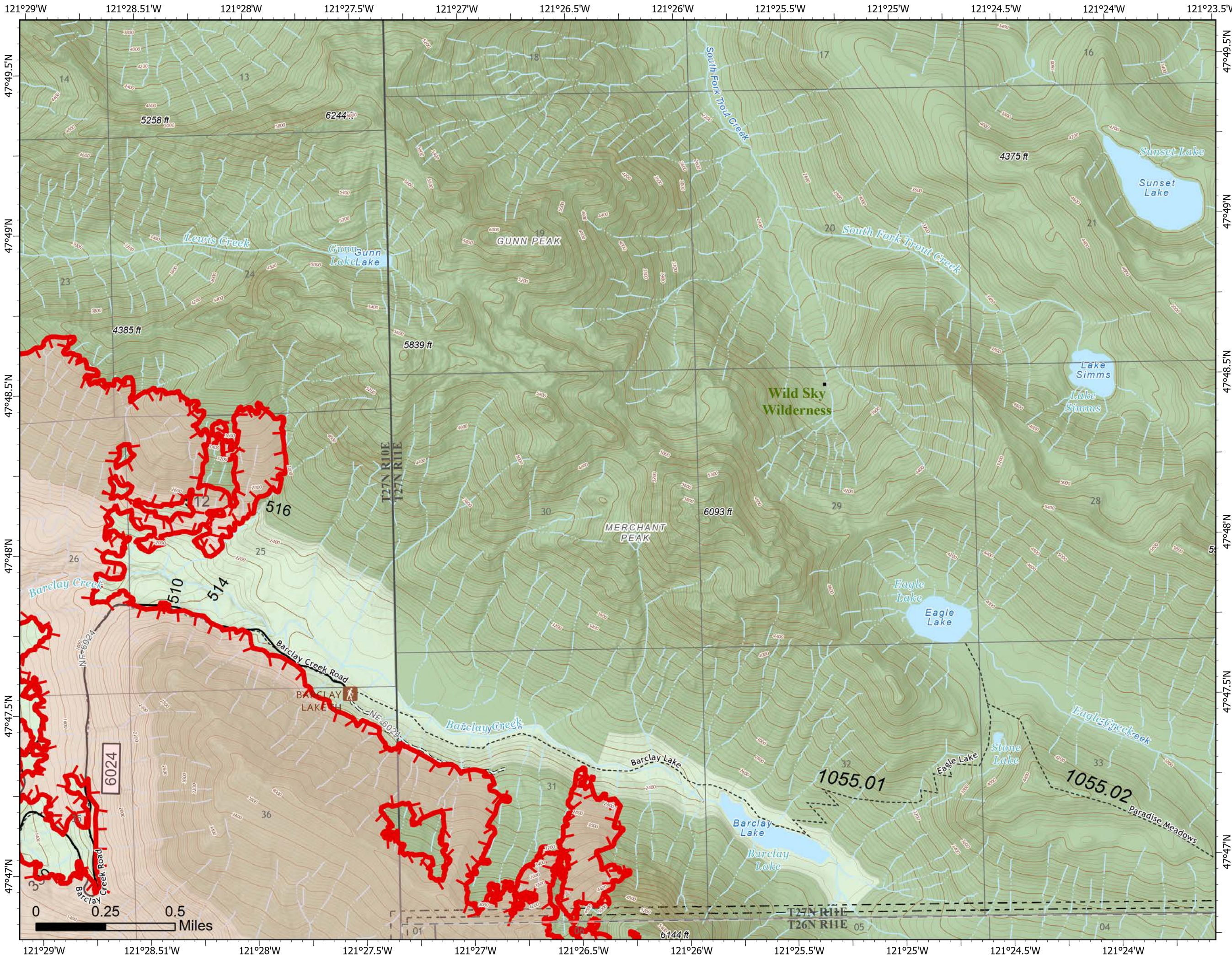
10/12/2022

13,503 acres at 10/09/2022 @2142

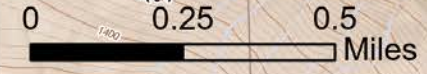


Page 5 of 14

- structures
- Uncontained
- Trail
- TRAILHEAD
- Open Roads
- Closed Roads
- Decommissioned Roads
- Trail
- county
- Wilderness
- US Forest Service (USFS)



Map updated:
10/11/2022 2305



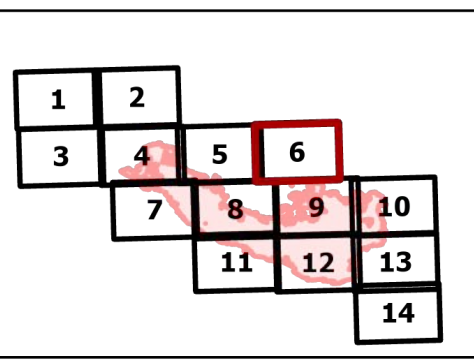
IAP

Bolt Creek

WA-NWS-000150

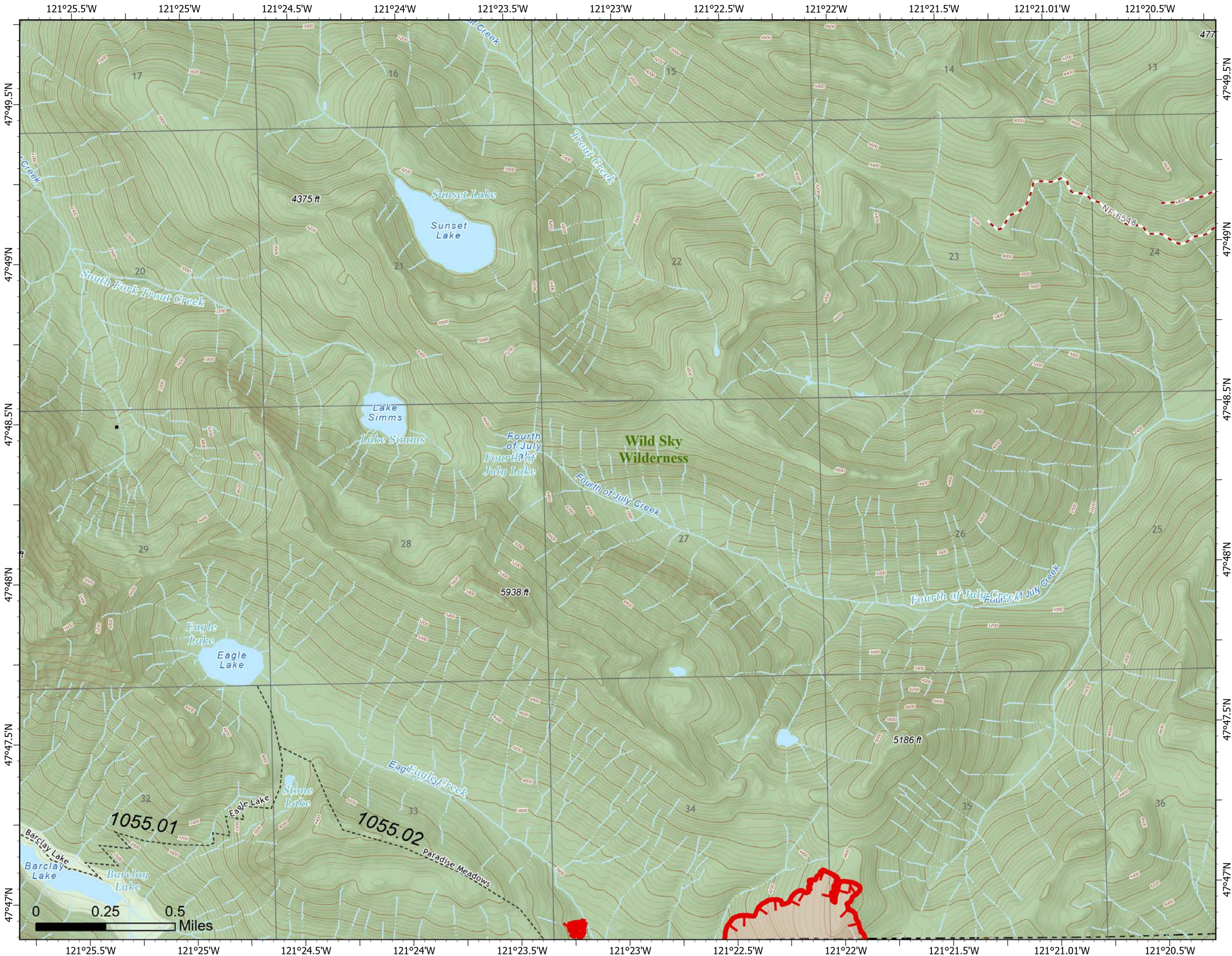
10/12/2022

13,503 acres at 10/09/2022 @2142



Page 6 of 14

-  structures
-  Uncontained
-  Trail
-  Decommissioned Roads
-  Trail
-  county
-  Wilderness
-  US Forest Service (USFS)



Map updated:
10/11/2022 2305



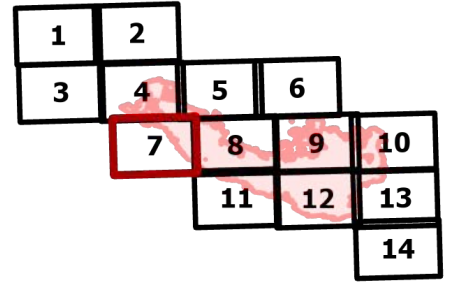
IAP

Bolt Creek

WA-NWS-000150

10/12/2022

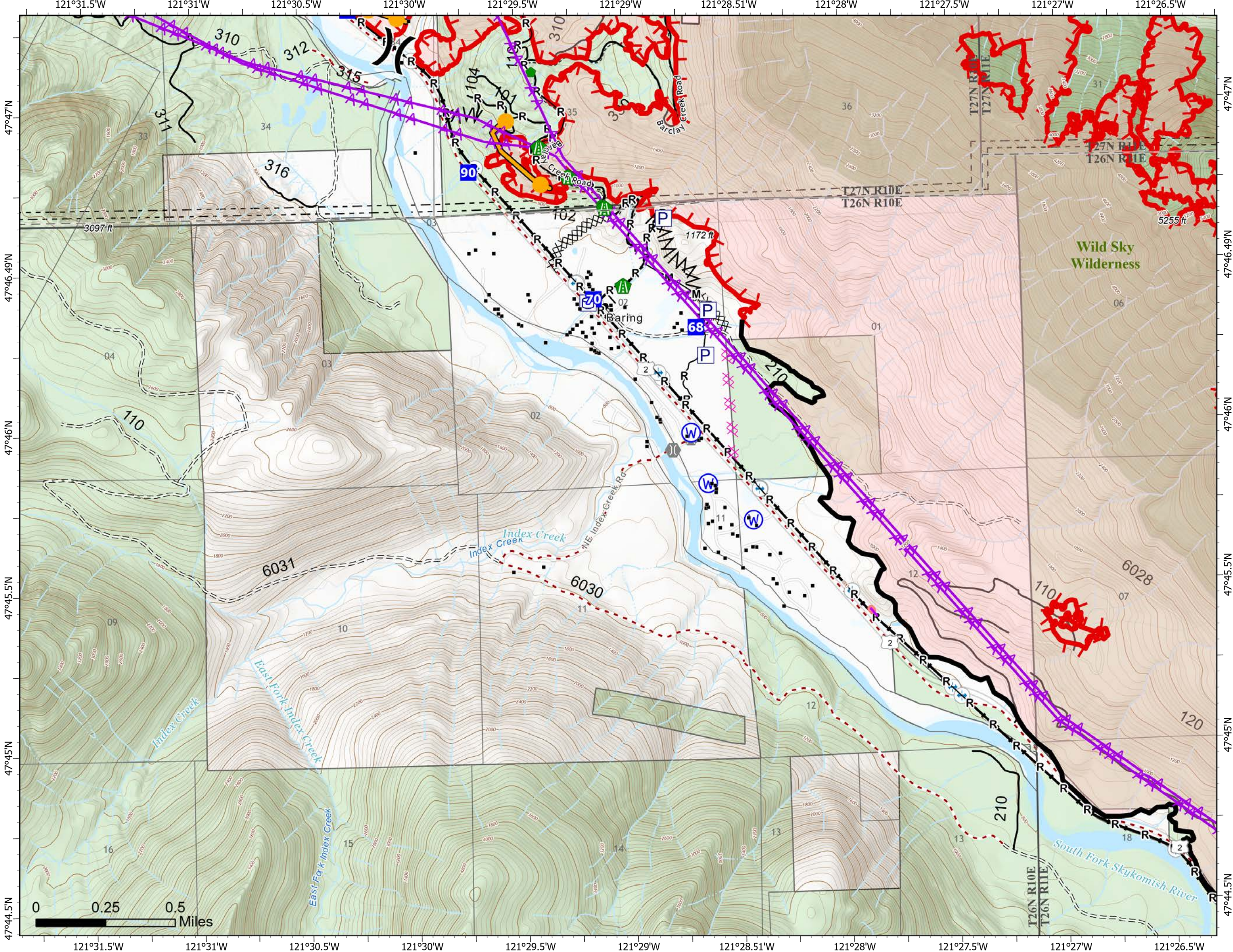
13,503 acres at 10/09/2022 @2142



- X Division Break
- Drop Point
- Fire Station
- ⌘ Bridge
- 🛠 Road Repair
- 🔧 Repair Point
- 💧 Water Source
- structures
- Ⓜ Pump
- Ⓜ Water Tank
- Completed Burnout
- Completed Dozer Line
- Completed Fuel Break
- Completed Mixed Construction Line
- Completed Road as Line
- Planned Dozer Line
- Management Action Point
- Aerial Hazard
- Retardant Drop
- Contained
- Uncontained
- Trail
- Bridges
- Railroads
- Open Roads
- Closed Roads
- Decommissioned Roads
- Decommissioned Roads
- Trail
- county
- Wilderness
- US Forest Service (USFS)
- Private



Map updated:
10/11/2022 2305



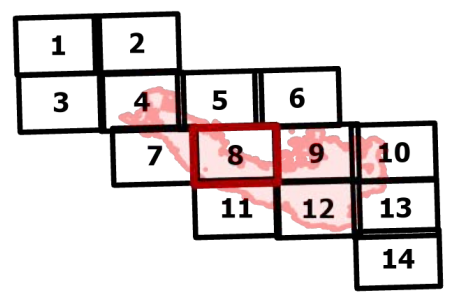
IAP

Bolt Creek

WA-NWS-000150

10/12/2022

13,503 acres at 10/09/2022 @2142

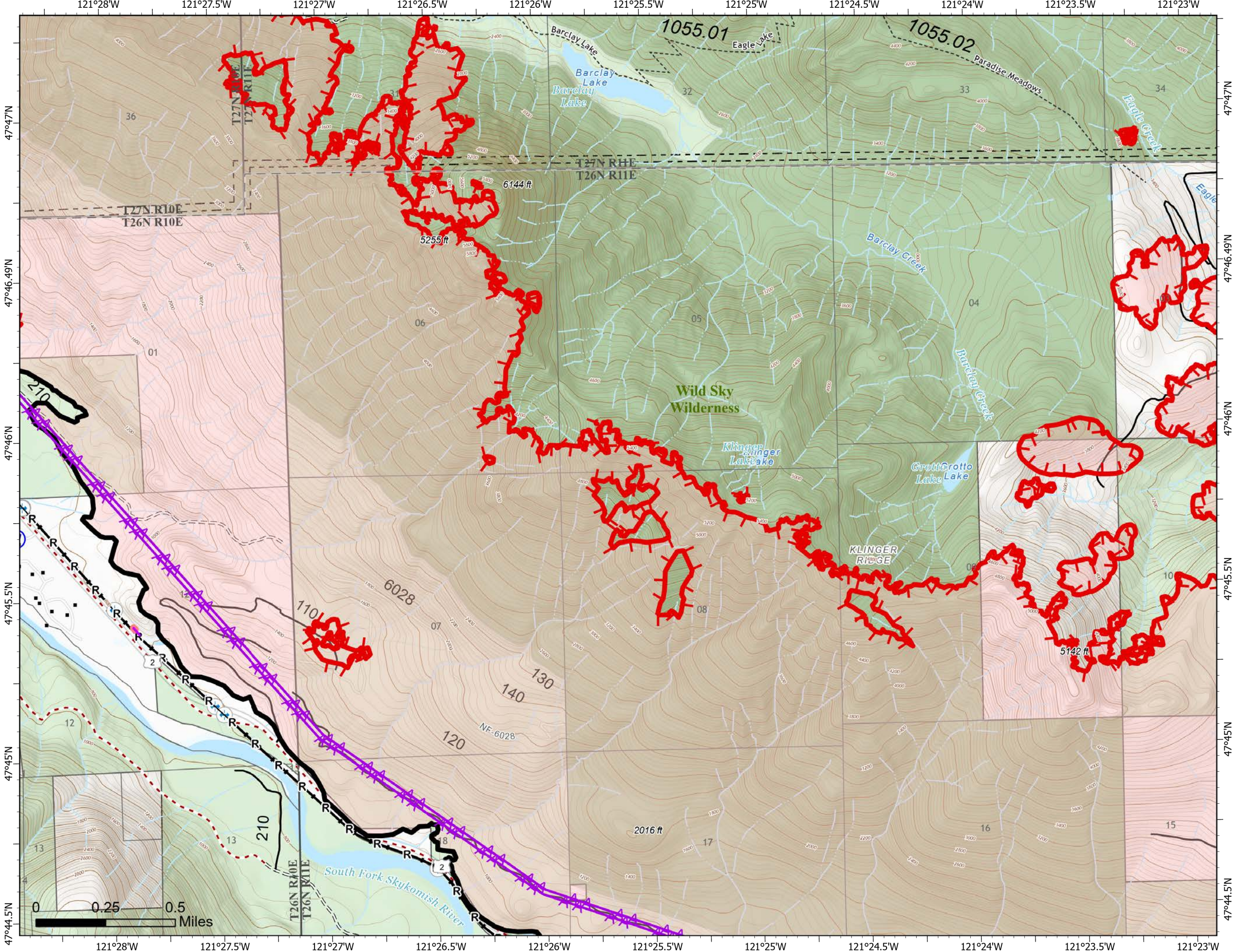


Page 8 of 14

- Water Source
- structures
- Completed Road as Line
- Aerial Hazard
- Retardant Drop
- Contained
- Uncontained
- Trail
- Bridges
- Railroads
- Open Roads
- Closed Roads
- Decommissioned Roads
- Trail
- county
- Wilderness
- US Forest Service (USFS)
- Private



Map updated:
10/11/2022 2305



IAP

Bolt Creek

WA-NWS-000150

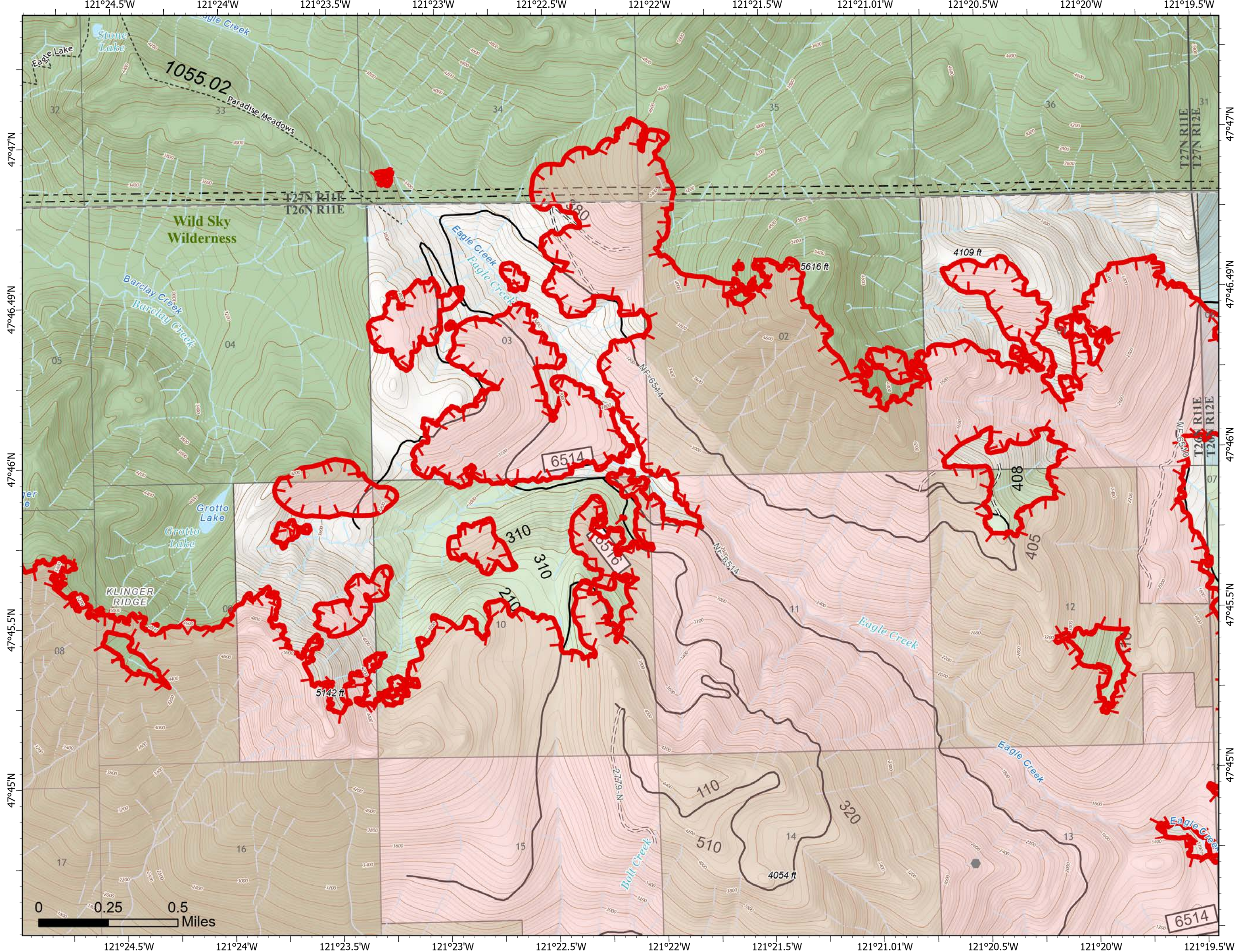
10/12/2022

13,503 acres at 10/09/2022 @2142

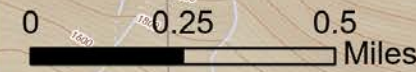
1	2				
3	4	5	6		
	7	8	9	10	
		11	12	13	
				14	

Page 9 of 14

-  Other
-  Uncontained
-  Trail
-  Open Roads
-  Closed Roads
-  Trail
-  county
-  Wilderness
-  State
-  US Forest Service (USFS)
-  Private



Map updated:
10/11/2022 2306



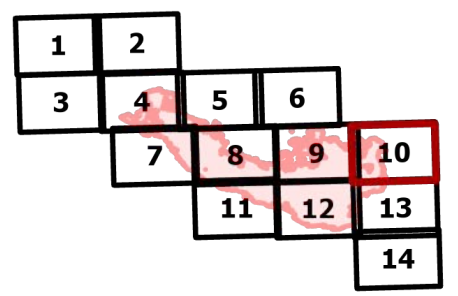
IAP

Bolt Creek

WA-NWS-000150

10/12/2022

13,503 acres at 10/09/2022 @2142

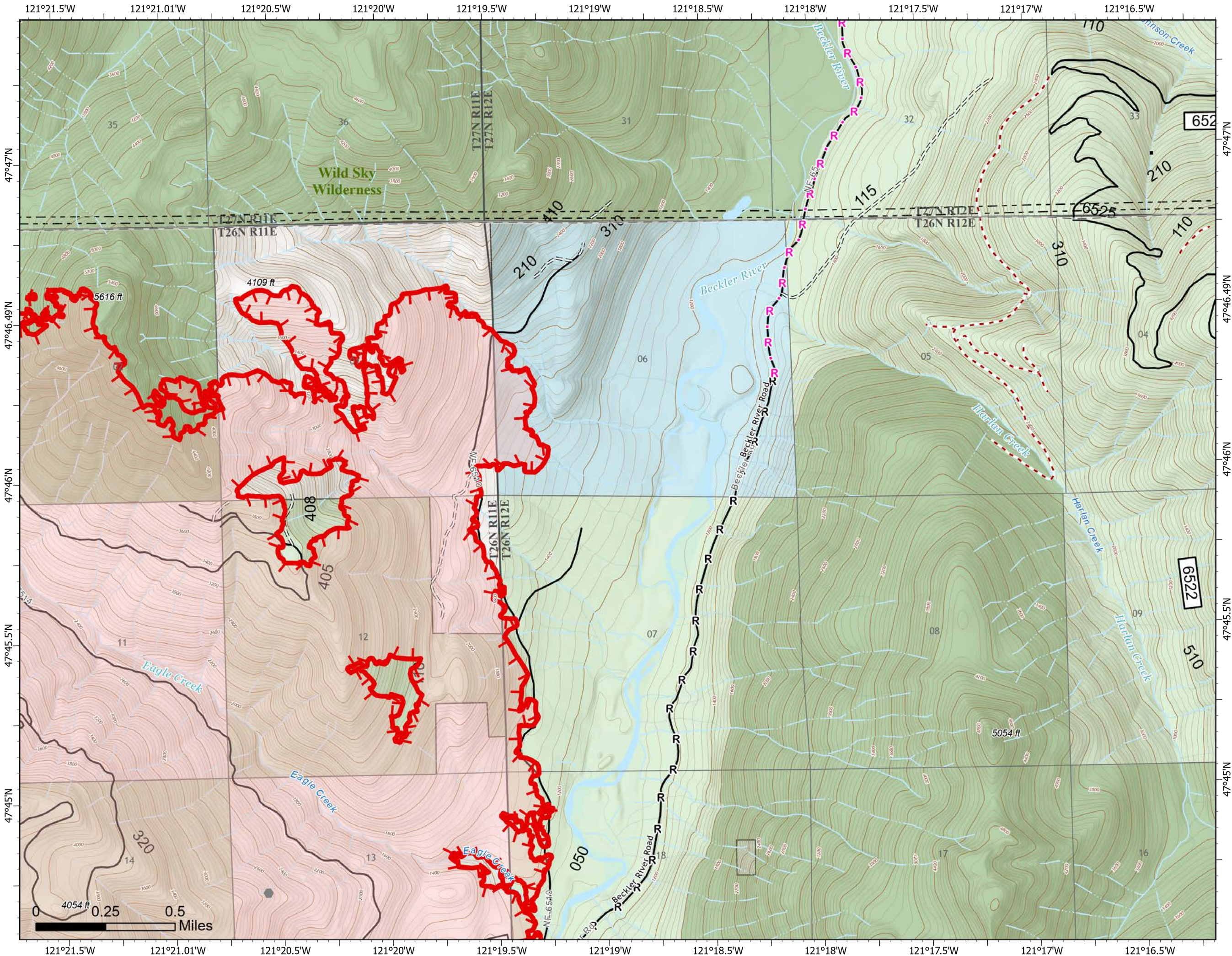


Page 10 of 14

- Other
- structures
- Label Point
- Completed Road as Line
- Planned Road as Line
- Uncontained
- Trail
- Open Roads
- Closed Roads
- Decommissioned Roads
- Trail
- county
- Wilderness
- State
- US Forest Service (USFS)
- Private



Map updated:
10/11/2022 2306



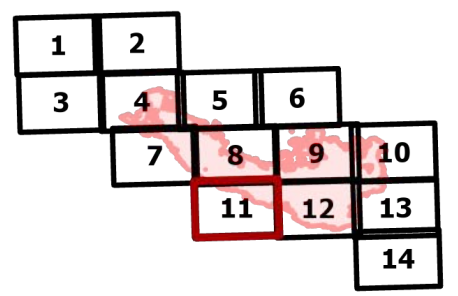
IAP

Bolt Creek

WA-NWS-000150

10/12/2022

13,503 acres at 10/09/2022 @2142

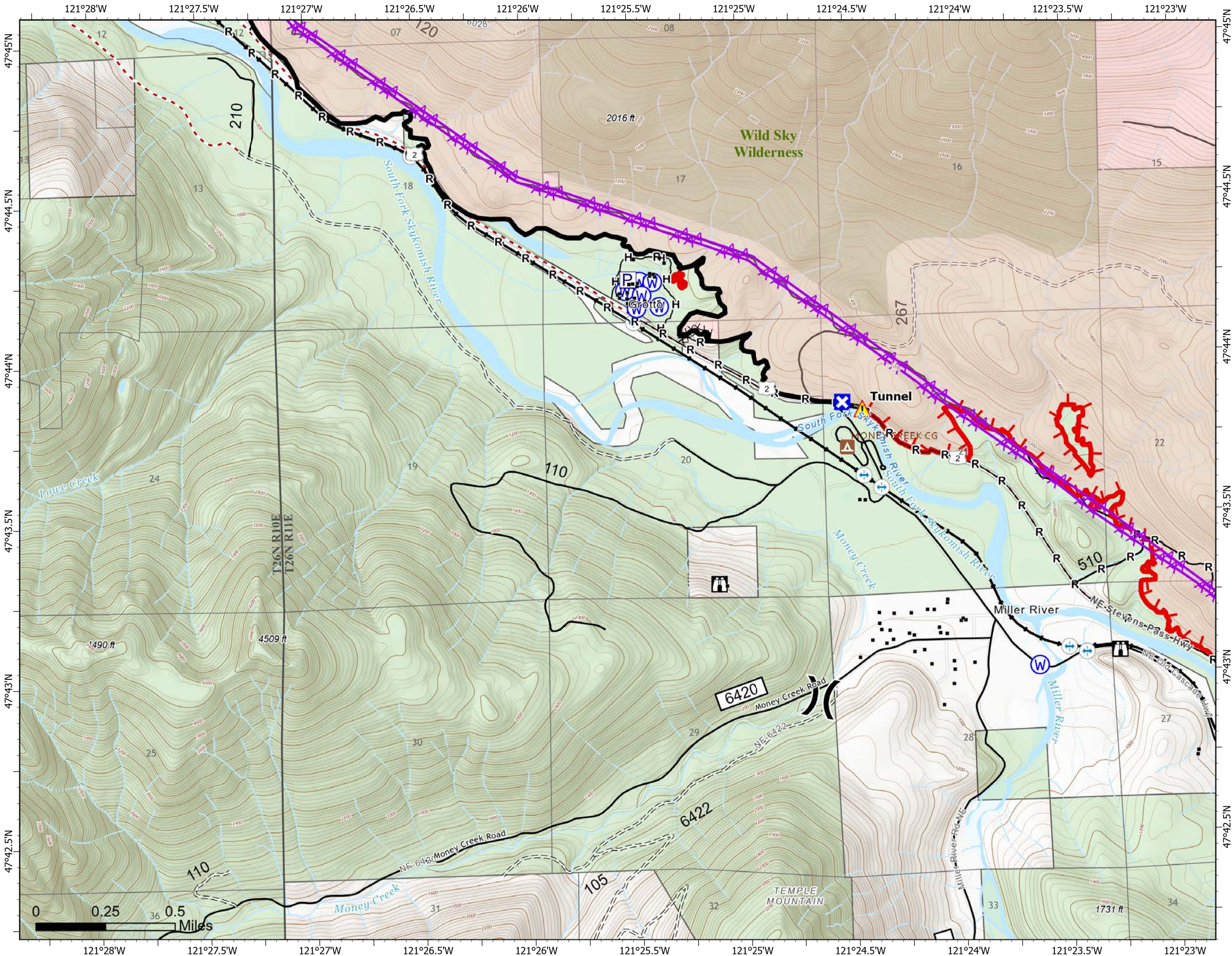


Page 11 of 14

- (X) Division Break
- [X] Closure
- [B] Lookout
- [T] Tunnel
- [W] Water Source
- [S] structures
- [P] Pump
- [X] Completed Dozer Line
- [H] Completed Hand Line
- [R] Completed Road as Line
- [---] Other
- [A] Aerial Hazard
- [C] Contained
- [U] Uncontained
- [---] Trail
- [A] Campground
- [B] Bridges
- [R] Railroads
- [---] Open Roads
- [---] Closed Roads
- [---] Decommissioned Roads
- [---] Trail
- [---] county
- [---] Wilderness
- [---] US Forest Service (USFS)
- [---] Private



Map updated:
10/11/2022 2306



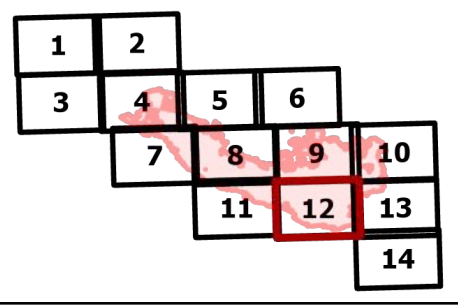
IAP

Bolt Creek

WA-NWS-000150

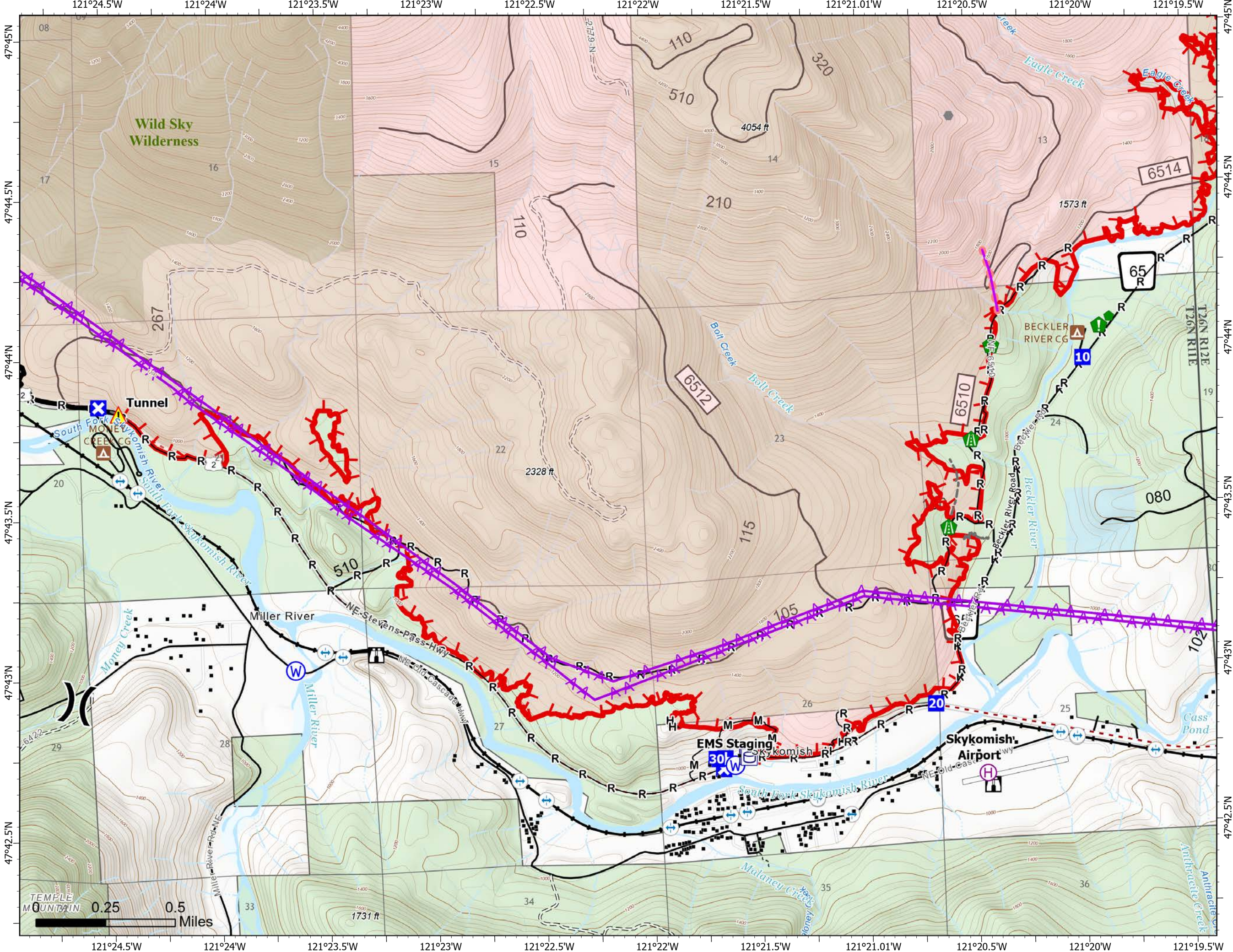
10/12/2022

13,503 acres at 10/09/2022 @2142



Page 12 of 14

- | | |
|-----------------------------------|--------------------------|
| Heliport | Aerial Hazard |
| Division Break | Retardant Drop |
| Medical | Contained |
| Drop Point | Uncontained |
| Closure | Trail |
| Lookout | Runway |
| Other | Campground |
| Road Repair | Bridges |
| Resource Location | Railroads |
| Repair Point | Open Roads |
| Culvert | Closed Roads |
| Tunnel | Decommissioned Roads |
| Water Source | Trail |
| structures | Runway |
| Pump | county |
| Water Tank | Wilderness |
| Completed Hand Line | State |
| Completed Mixed Construction Line | US Forest Service (USFS) |
| Completed Road as Line | Private |
| Other | |



Map updated:
10/11/2022 2307



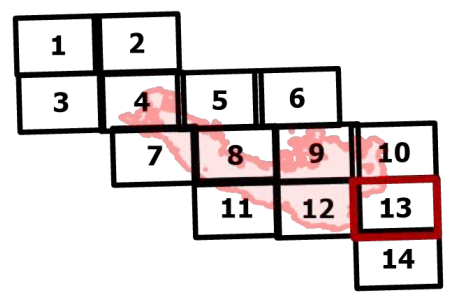
IAP

Bolt Creek

WA-NWS-000150

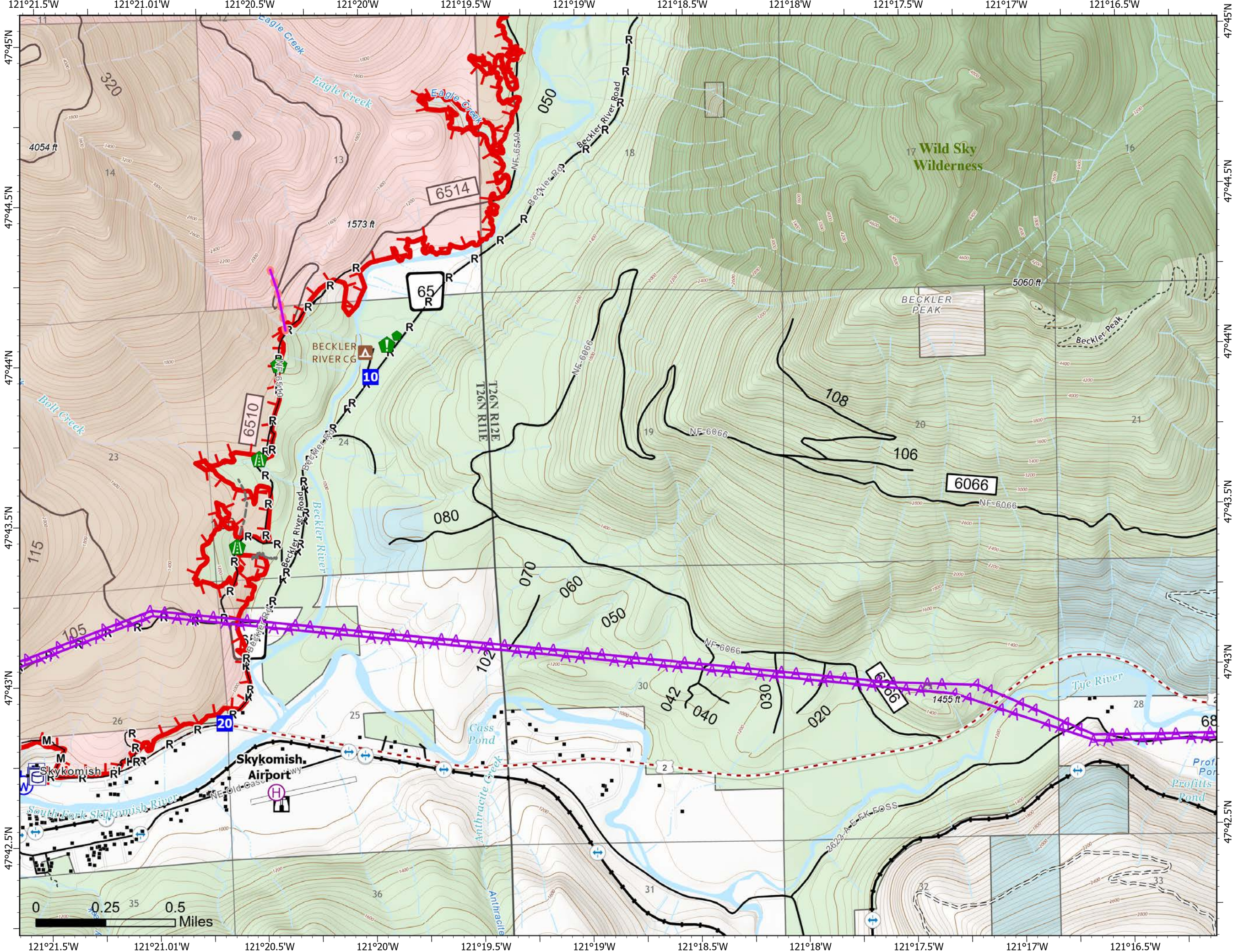
10/12/2022

13,503 acres at 10/09/2022 @2142



Page 13 of 14

- Heliport
- Medical
- Drop Point
- Closure
- Lookout
- Other
- Road Repair
- Resource Location
- Repair Point
- Culvert
- Water Source
- structures
- Label Point
- Pump
- Water Tank
- Completed Hand Line
- Completed Mixed Construction Line
- Completed Road as Line
- Other
- Aerial Hazard
- Retardant Drop
- Uncontained
- Trail
- Runway
- Campground
- Bridges
- Railroads
- Open Roads
- Closed Roads
- Decommissioned Roads
- Trail
- Runway
- county
- Wilderness
- State



Map updated:
10/11/2022 2307



Transportation

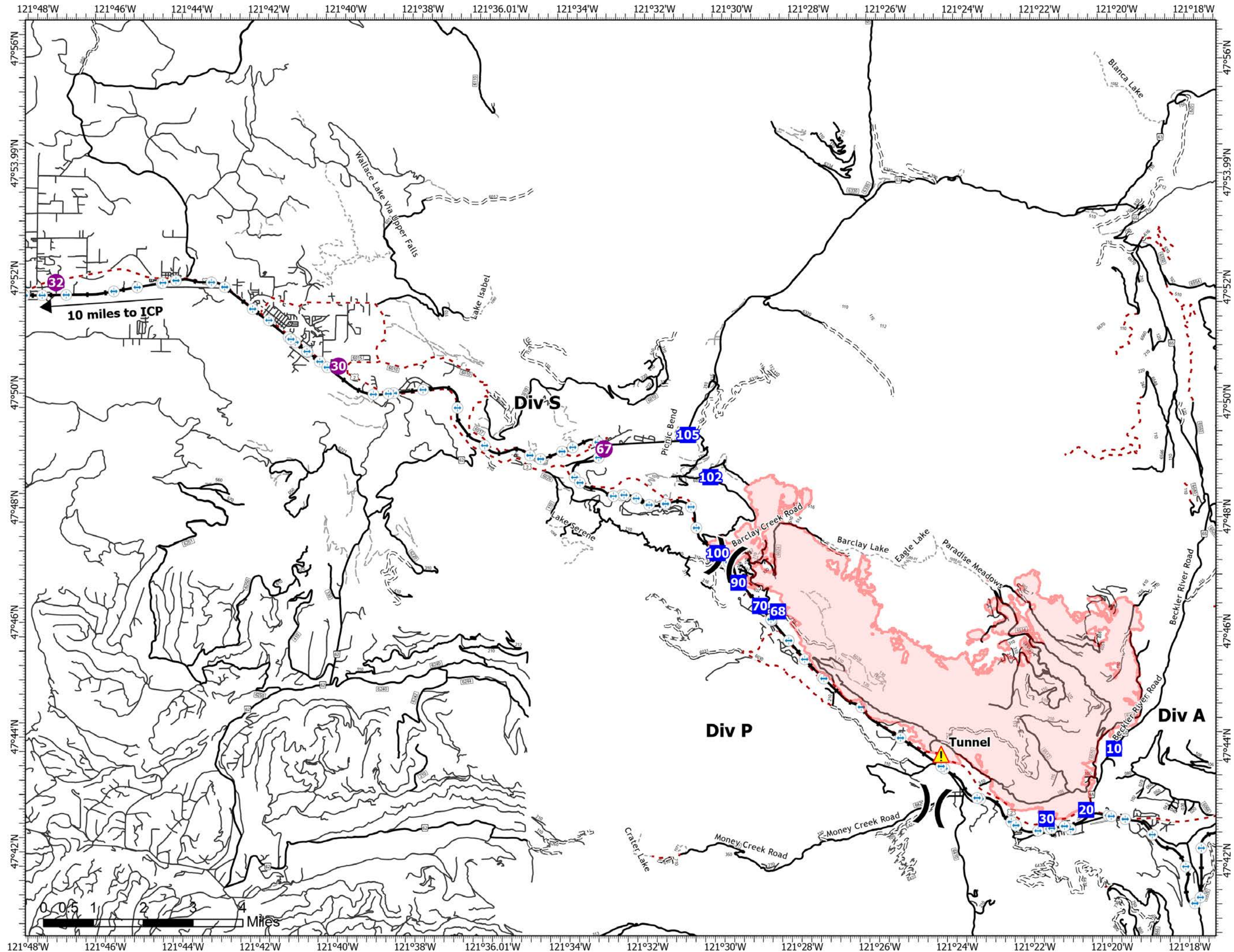
Bolt Creek

WA-NWS-000150

10/12/2022

13,503 acres at 10/09/2022 @2142

- Helispot
- ⌘ Division Break
- Drop Point
- ▲ Tunnel
- Secondary Hwy
- Local Road
- - - 4WD
- · - · - Trail
- Runway
- ⊕ Bridges
- Railroads
- Open Roads
- = = = Closed Roads
- - - Decommissioned Roads
- · - · - Decommissioned Roads



Map Updated
10/11/2022 2314

