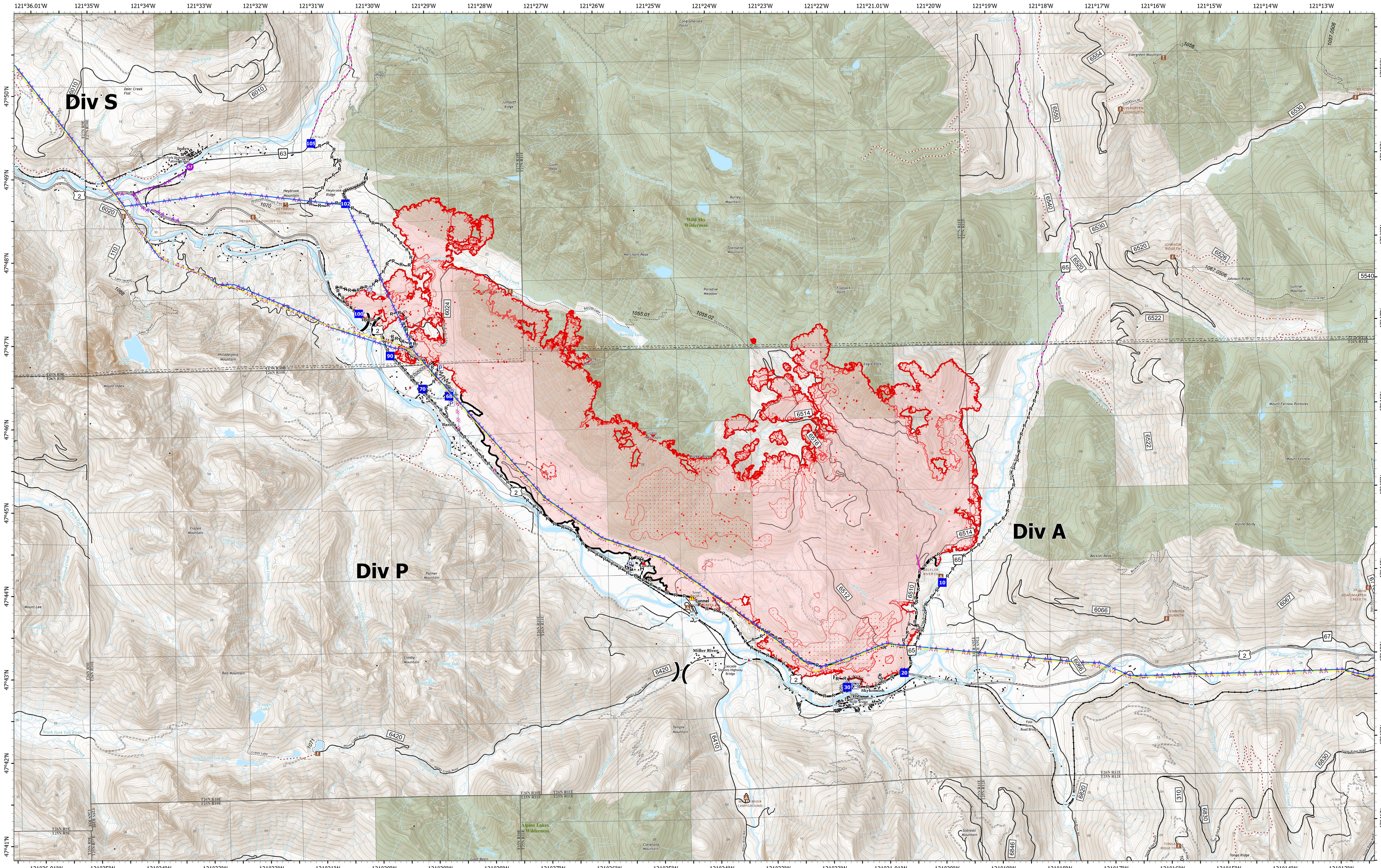


Operations

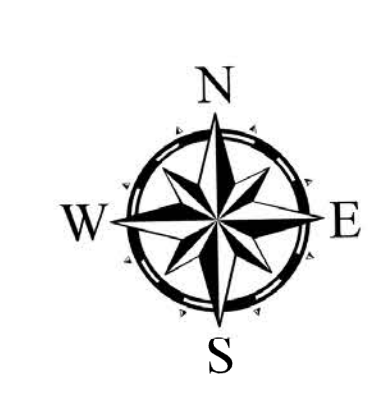


Bolt Creek
WA-NWS-000150
10/12/2022

13,503 acres at 10/09/2022 @2142

10/12/2022 0917

- | | | | | | |
|--|---|---|---|---|---|
| <ul style="list-style-type: none"> ● IR Isolated Heat Source ● Possible IR Heat Source □ IR Heat Perimeter □ IR Intense Heat □ IR Scattered Heat ⊠ Pump ⊠ Water Tank ⊠ Division Break ● Hellsport | <ul style="list-style-type: none"> ▲ Drop Point — 345kv High Voltage — 345kv High Voltage — Completed Burnout — Completed Dozer Line — Completed Fuel Break — Completed Hand Line — Completed Mixed Construction Line | <ul style="list-style-type: none"> — Completed Road as Line — Planned Dozer Line — Planned Road as Line — Other — Aerial Hazard — Retardant Drop — Contained — Uncontained — Bridges | <ul style="list-style-type: none"> ⊠ Campground ⊠ Lookout/Cabin ⊠ Trailhead ⊠ Railroads ⊠ Major Highways — Forest Service Open Roads — Forest Service Closed Roads — Forest Service Decommissioned Roads ⊠ Bridges | <ul style="list-style-type: none"> — Railroads — Wilderness — Bureau of Indian Affairs (BIA) — Bureau of Land Management (BLM) — Bureau of Reclamation (BOR) — Department of Defense (DOD) — Local Government — National Park Service (NPS) | <ul style="list-style-type: none"> — Other Federal — State — US Fish and Wildlife Service (USFWS) — US Forest Service (USFS) — Private |
|--|---|---|---|---|---|



0 0.42 0.85 1.7 Miles

