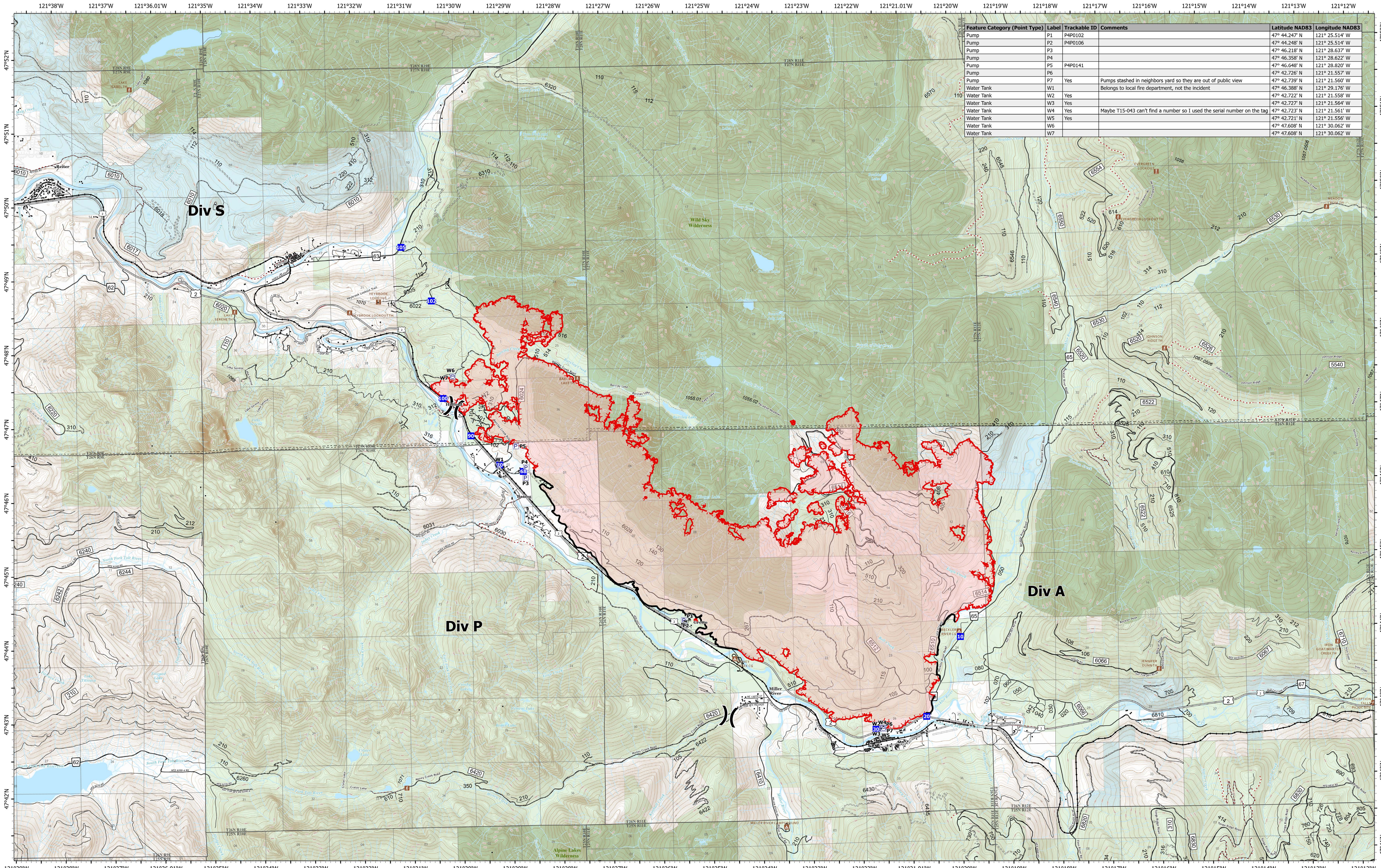


# Pump Locations



**Bolt Creek**  
**WA-NWS-000150**  
**10/12/2022**

13,503 acres at 10/09/2022 @2142

10/12/2022 0915

- Pump
  - X Water Tank
  - X Division Break
  - Drop Point
  - Contained
- Uncontained
  - Campground
  - Day Use/Picnic
  - Lookout/Cabin
  - Trailhead
- Railroads
  - Major Highways
  - Forest Service Open Roads
  - Forest Service Closed Roads
  - Forest Service Decommissioned Roads
- Railroads
  - county
  - Wilderness
  - Trail
  - Bureau of Land Management (BLM)
- State
  - US Forest Service (USFS)
  - Private