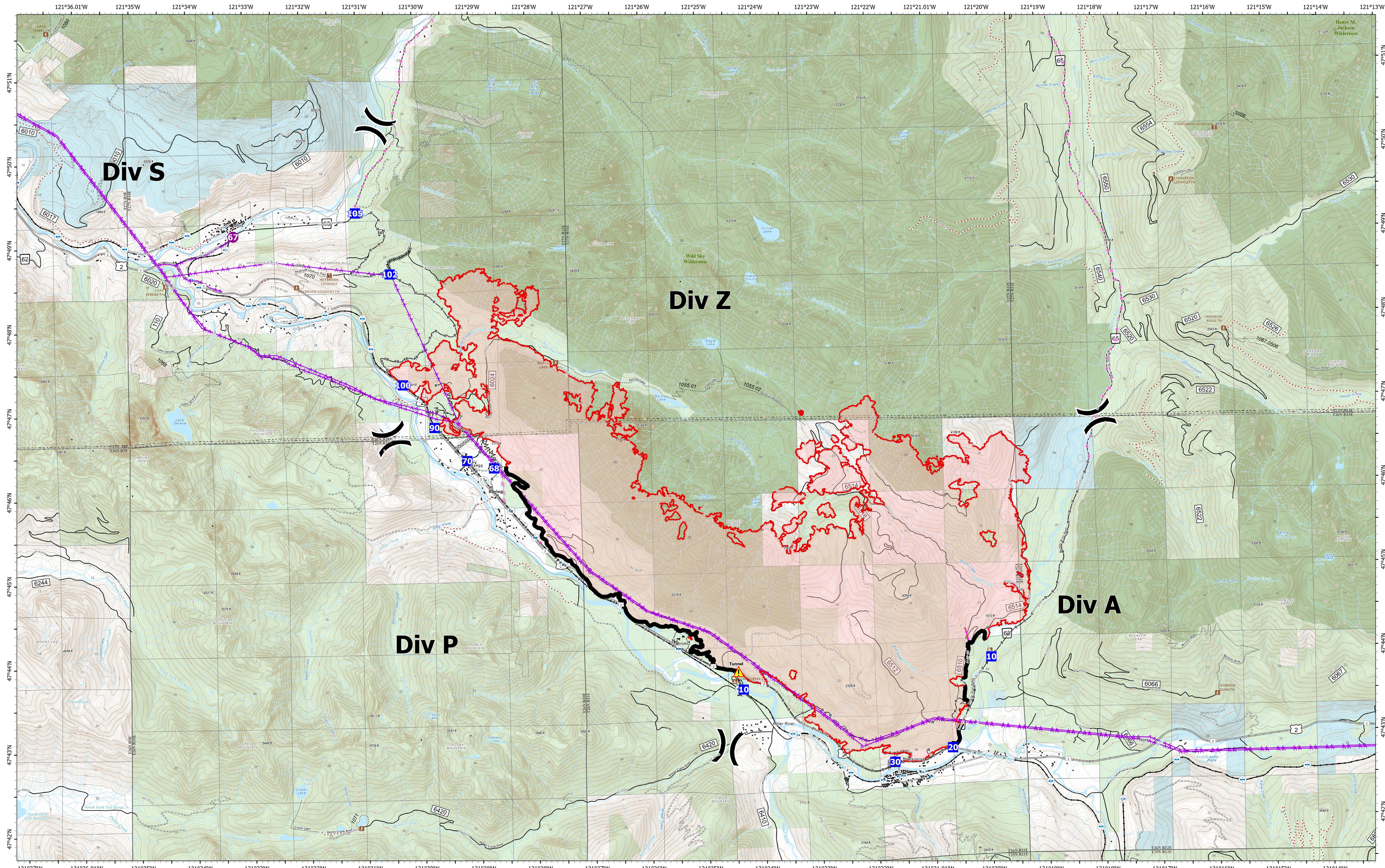


# Briefing



**Bolt Creek**  
**WA-NWS-000150**  
**10/13/2022**

13,748 acres at 10/11/2022 @1956

10/12/2022 2024

- |                  |                 |                                       |                                   |                          |
|------------------|-----------------|---------------------------------------|-----------------------------------|--------------------------|
| ● Helispot       | Uncontained     | Trailhead                             | Trail                             | US Forest Service (USFS) |
| ⌘ Division Break | ⌘ Bridges       | ⌘ Railroads                           | ⌘ county                          | Private                  |
| ▲ Drop Point     | ⌘ Campground    | ⌘ Forest Service Open Roads           | ⌘ Wilderness                      | MajorHighways            |
| ⌘ Tunnel         | ⌘ Lookout/Cabin | ⌘ Forest Service Closed Roads         | ⌘ Bureau of Land Management (BLM) |                          |
| ■ Contained      |                 | ⌘ Forest Service Decommissioned Roads | ⌘ State                           |                          |