

IAP

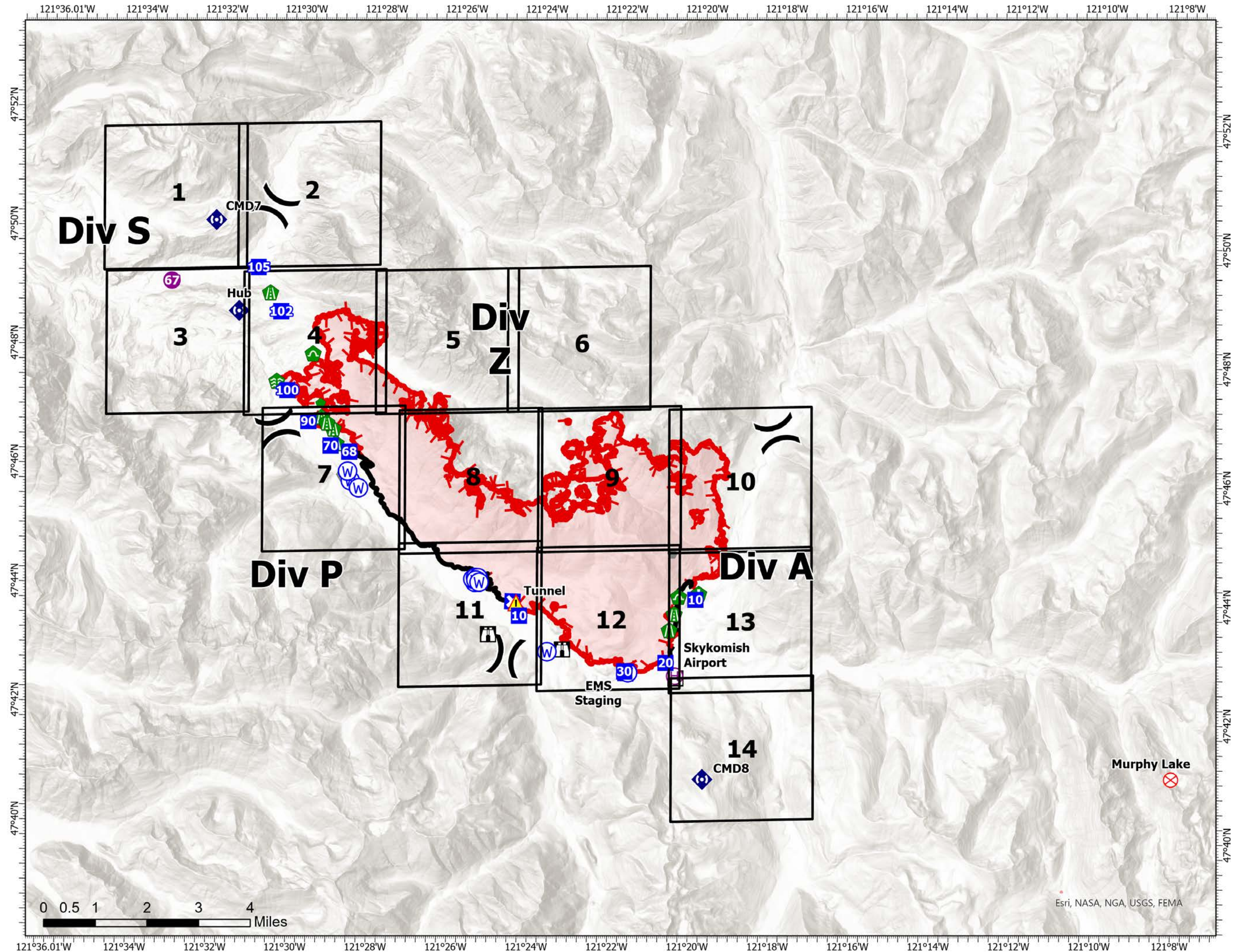
Bolt Creek

WA-NWS-000150

10/13/2022

13,748 acres at 10/11/2022 @1956

- Helispot
- ⊕ Helibase
-) Division Break
- + Medical
- Drop Point
- ⊠ Closure
- Ⓜ Lookout
- ⊗ Fire Origin
- Other
- Ⓜ Fire Station
- Ⓜ Bridge
- Ⓜ Stream Crossing
- Ⓜ Road Repair
- Ⓜ Resource Location
- Ⓜ Repair Point
- Ⓜ Culvert
- Ⓜ Repeater
- Ⓜ Tunnel
- Ⓜ Water Source
- ▬ Contained
- └ Uncontained
- ⊗ Fire Origin



Map updated:
10/12/2022 2008

Esri, NASA, NGA, USGS, FEMA

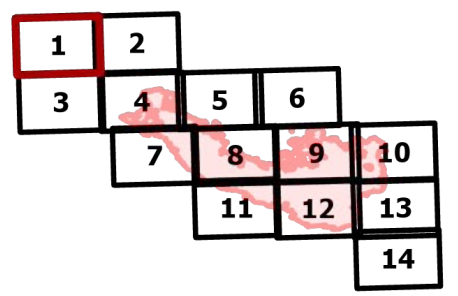
IAP

Bolt Creek

WA-NWS-000150

10/12/2022

13,748 acres at 10/11/2022 @1956

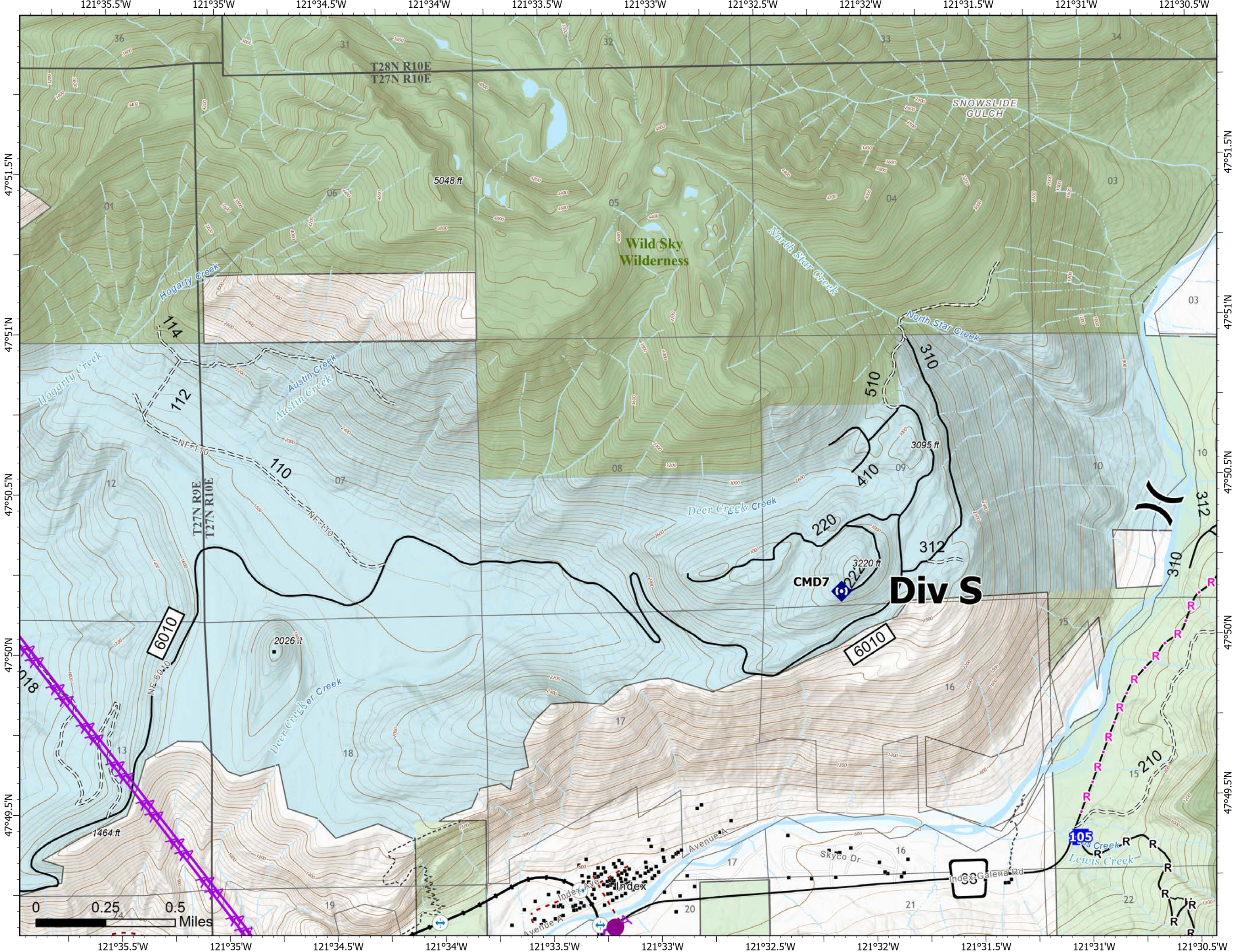


Page 1 of 14

- Helispot
- Division Break
- Drop Point
- Repeater
- structures
- Label Point
- Completed Hand Line
- Completed Road as Line
- Planned Road as Line
- Aerial Hazard
- Trail
- Bridges
- Railroads
- Open Roads
- Closed Roads
- Decommissioned Roads
- Trail
- county
- Wilderness
- State
- US Forest Service (USFS)
- Private
- Undetermined



Map updated:
10/12/2022 2030



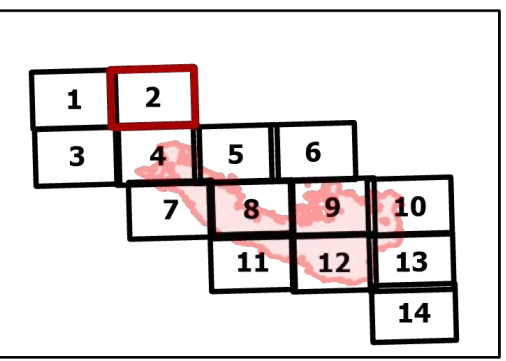
IAP

Bolt Creek

WA-NWS-000150

10/12/2022

13,748 acres at 10/11/2022 @1956

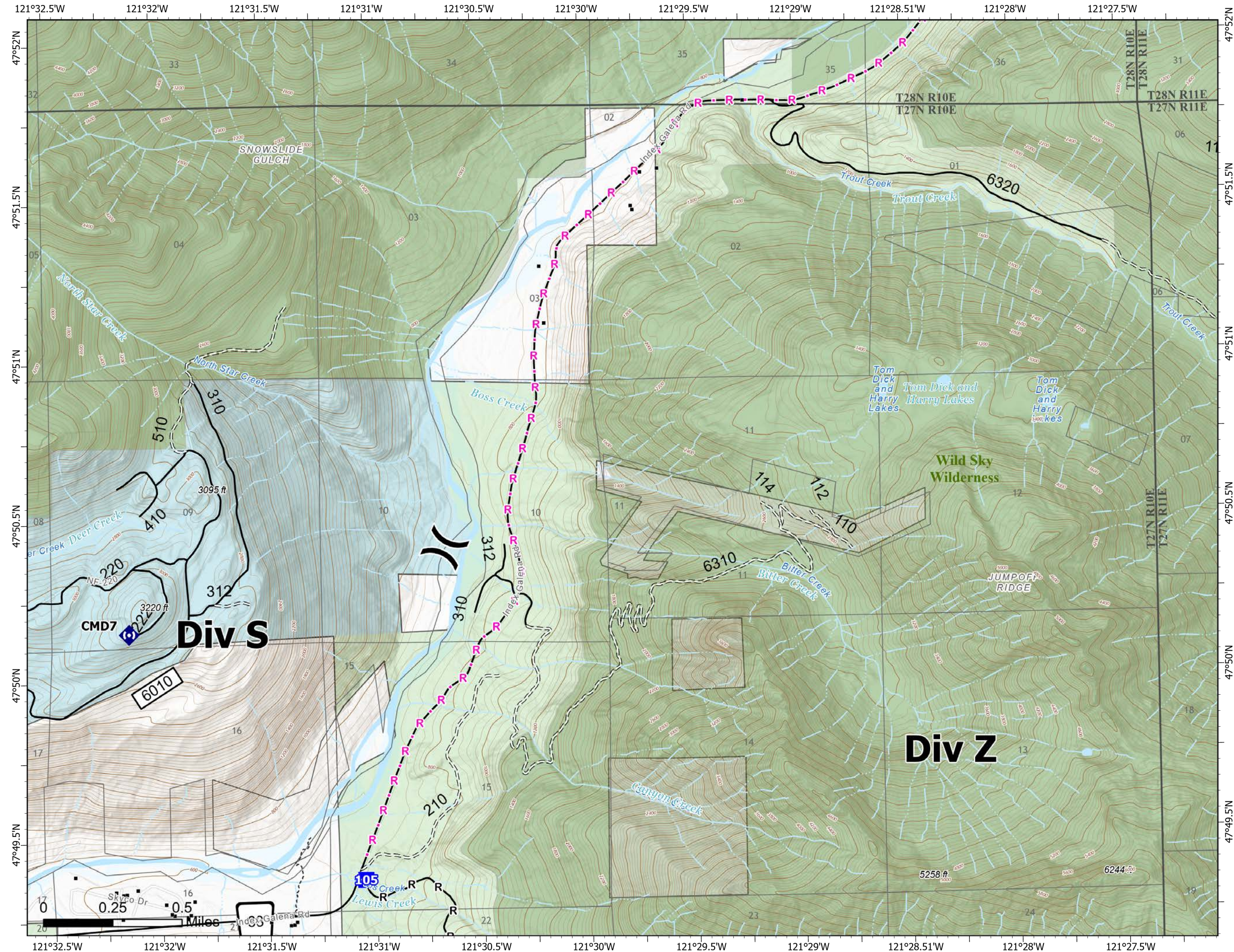


Page 2 of 14

- (X) Division Break
- Drop Point
- Ⓜ Repeater
- structures
- Completed Hand Line
- Completed Road as Line
- Planned Road as Line
- Trail
- Open Roads
- == Closed Roads
- Trail
- - - county
- Wilderness
- State
- US Forest Service (USFS)
- Private
- Undetermined



Map updated:
10/12/2022 2030



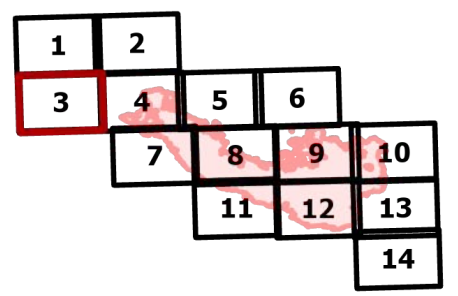
IAP

Bolt Creek

WA-NWS-000150

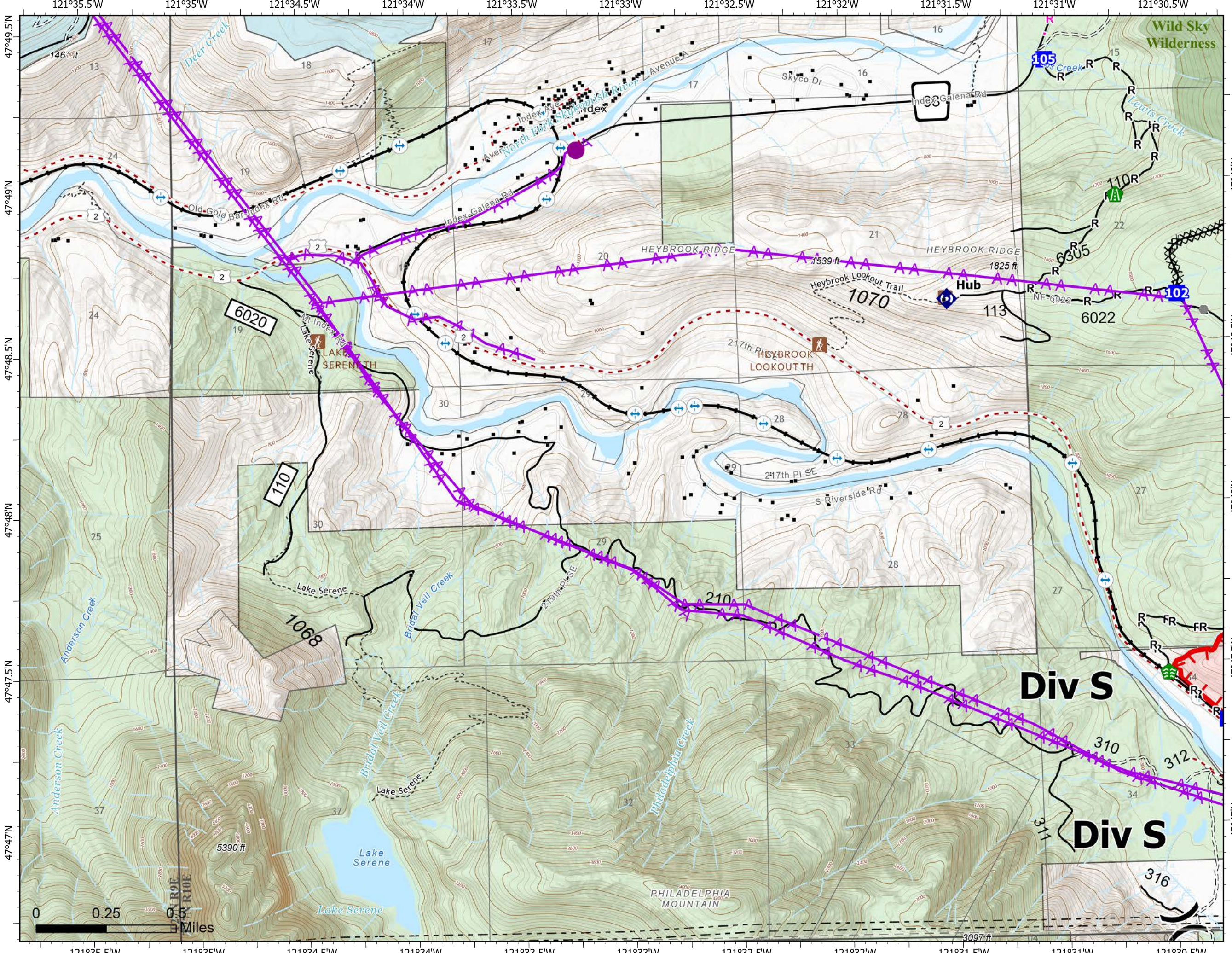
10/12/2022

13,748 acres at 10/11/2022 @1956



Page 3 of 14

- | | |
|------------------------|--------------------------|
| Helispot | LOOKOUT/CABIN |
| Division Break | TRAILHEAD |
| Drop Point | Bridges |
| Other | Railroads |
| Stream Crossing | Open Roads |
| Road Repair | Closed Roads |
| Repeater | Decommissioned Roads |
| structures | Trail |
| Completed Dozer Line | county |
| Completed Hand Line | Wilderness |
| Completed Road as Line | State |
| Planned Road as Line | US Forest Service (USFS) |
| Aerial Hazard | Private |
| Uncontained | Undetermined |
| Trail | |



Map updated:
10/12/2022 2030



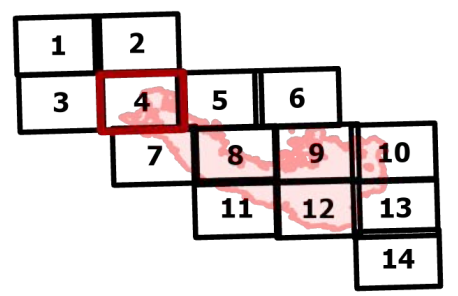
IAP

Bolt Creek

WA-NWS-000150

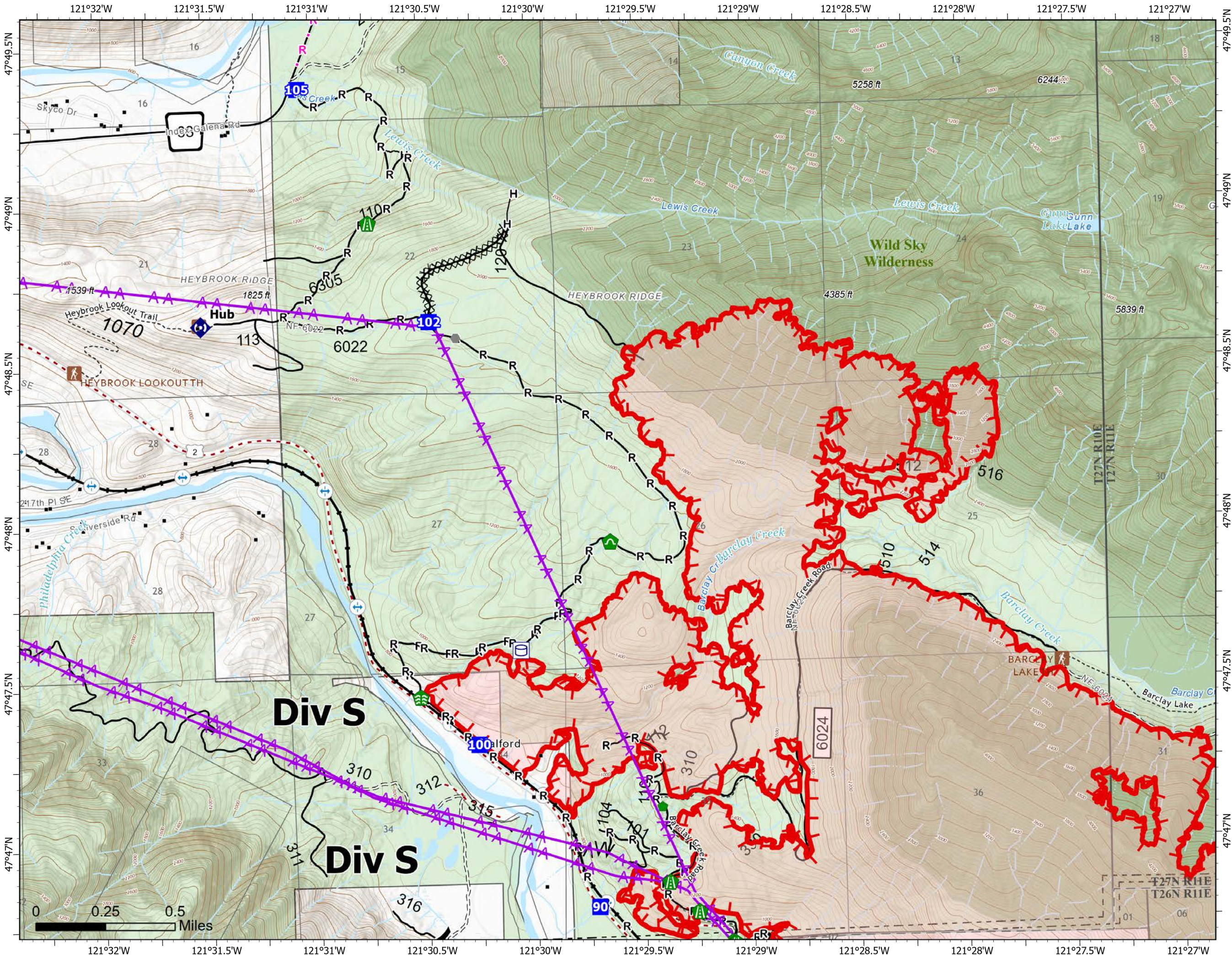
10/12/2022

13,748 acres at 10/11/2022 @1956



Page 4 of 14

- | | | | |
|---|------------------------|---|--------------------------|
| X | Division Break | ■ | Uncontained |
| ■ | Drop Point | — | Trail |
| ● | Other | 🏠 | LOOKOUT/CABIN |
| 🌳 | Stream Crossing | 🚶 | TRAILHEAD |
| 🛠 | Road Repair | 🚗 | Bridges |
| 🔧 | Repair Point | 🚂 | Railroads |
| 🌳 | Culvert | — | Open Roads |
| 📡 | Repeater | — | Closed Roads |
| 🏠 | structures | — | Decommissioned Roads |
| 🚰 | Water Tank | — | Decommissioned Roads |
| ⊗ | Completed Dozer Line | — | Trail |
| ⊗ | Completed Fuel Break | — | county |
| H | Completed Hand Line | 🌲 | Wilderness |
| R | Completed Road as Line | 🌲 | US Forest Service (USFS) |
| R | Planned Road as Line | 🏠 | Private |
| — | Aerial Hazard | 🏠 | Undetermined |



Map updated:
10/12/2022 2031



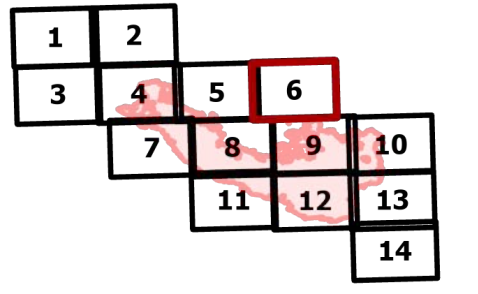
IAP

Bolt Creek

WA-NWS-000150

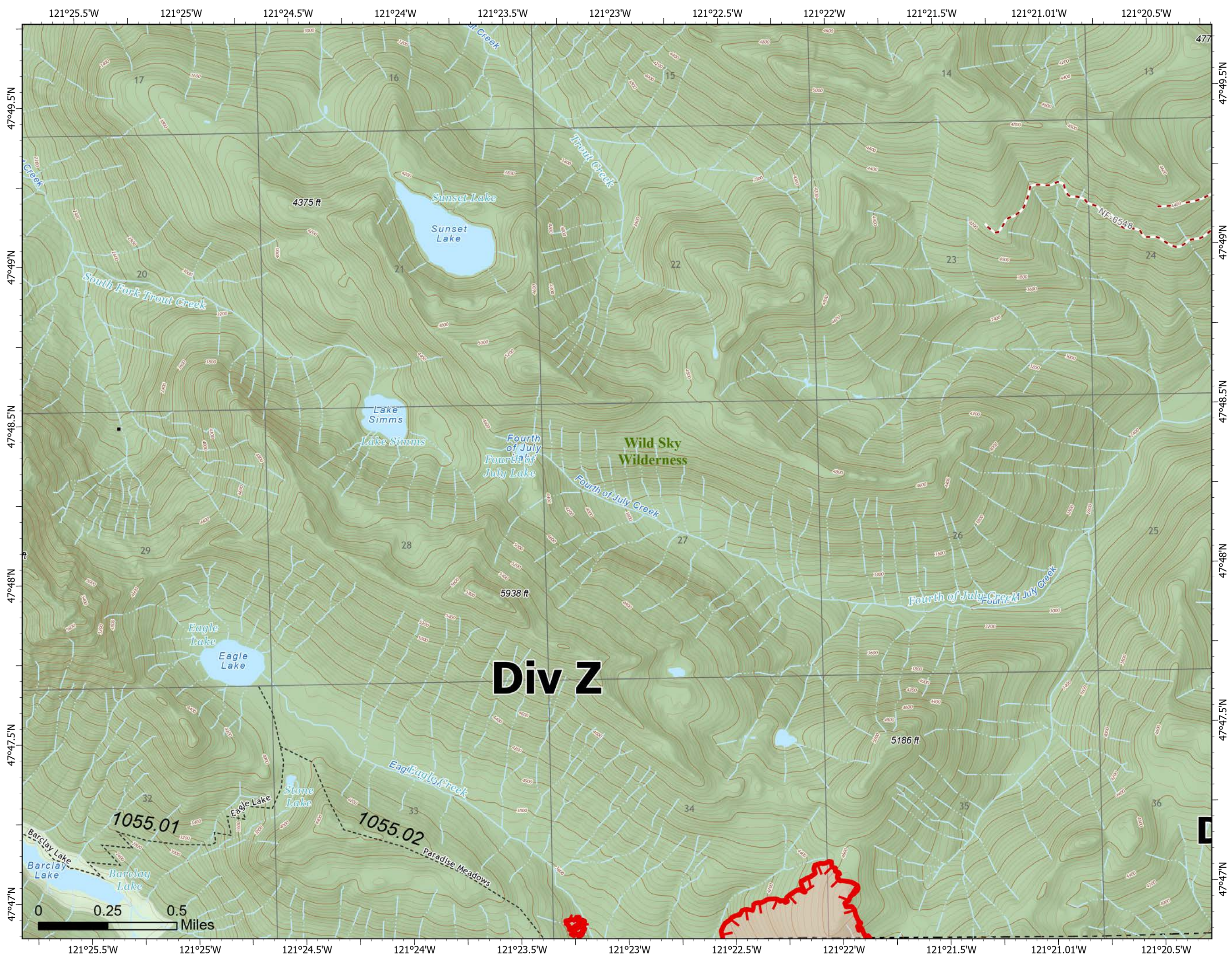
10/12/2022

13,748 acres at 10/11/2022 @1956



Page 6 of 14

-  structures
-  Label Point
-  Uncontained
-  Trail
-  Decommissioned Roads
-  Trail
-  county
-  Wilderness
-  US Forest Service (USFS)



Map updated:
10/12/2022 2031



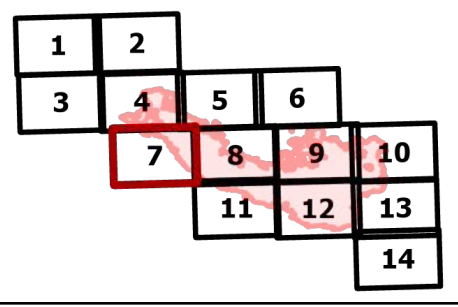
IAP

Bolt Creek

WA-NWS-000150

10/12/2022

13,748 acres at 10/11/2022 @1956

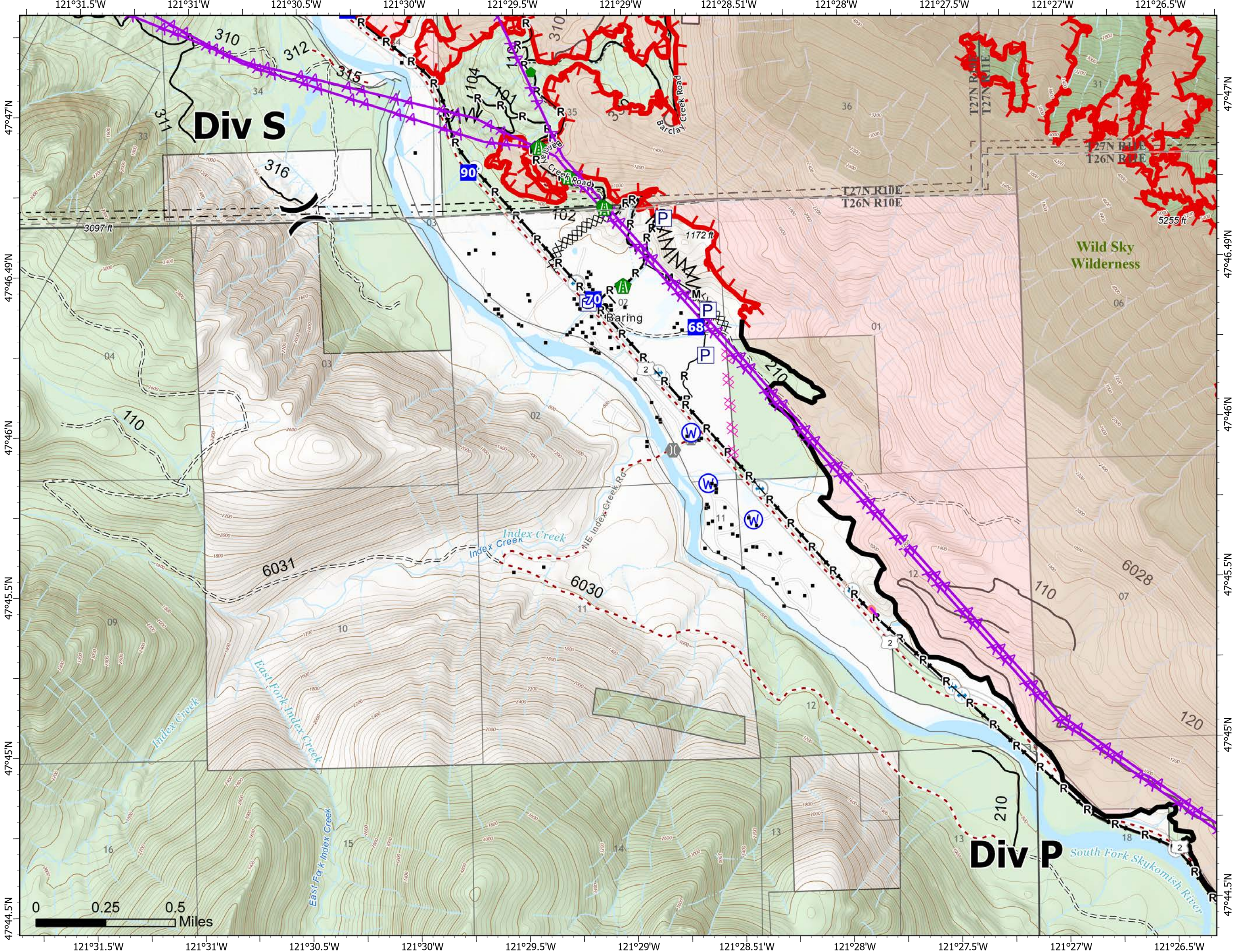


Page 7 of 14

- X Division Break
- Drop Point
- Fire Station
- ⌒ Bridge
- 🛠 Road Repair
- 🔧 Repair Point
- 💧 Water Source
- 🏠 structures
- 📦 Pump
- 🛢 Water Tank
- Completed Burnout
- ⊗ Completed Dozer Line
- ⚡ Completed Fuel Break
- ⚙ Completed Mixed Construction Line
- Completed Road as Line
- Planned Dozer Line
- 🔴 Aerial Hazard
- 🔴 Retardant Drop
- 🔴 Contained
- 🔴 Uncontained
- 👤 Trail
- 🌉 Bridges
- 🚂 Railroads
- Open Roads
- Closed Roads
- Decommissioned Roads
- Decommissioned Roads
- 👤 Trail
- 🏠 county
- 🌲 Wilderness
- 🌲 US Forest Service (USFS)
- 🏠 Private



Map updated:
10/12/2022 2031



121°28'W 121°27.5'W 121°27'W 121°26.5'W 121°26'W 121°25.5'W 121°25'W 121°24.5'W 121°24'W 121°23.5'W 121°23'W

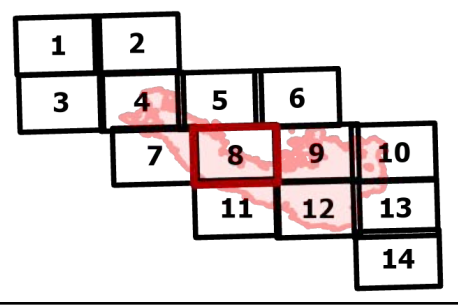
IAP

Bolt Creek

WA-NWS-000150

10/12/2022

13,748 acres at 10/11/2022 @1956

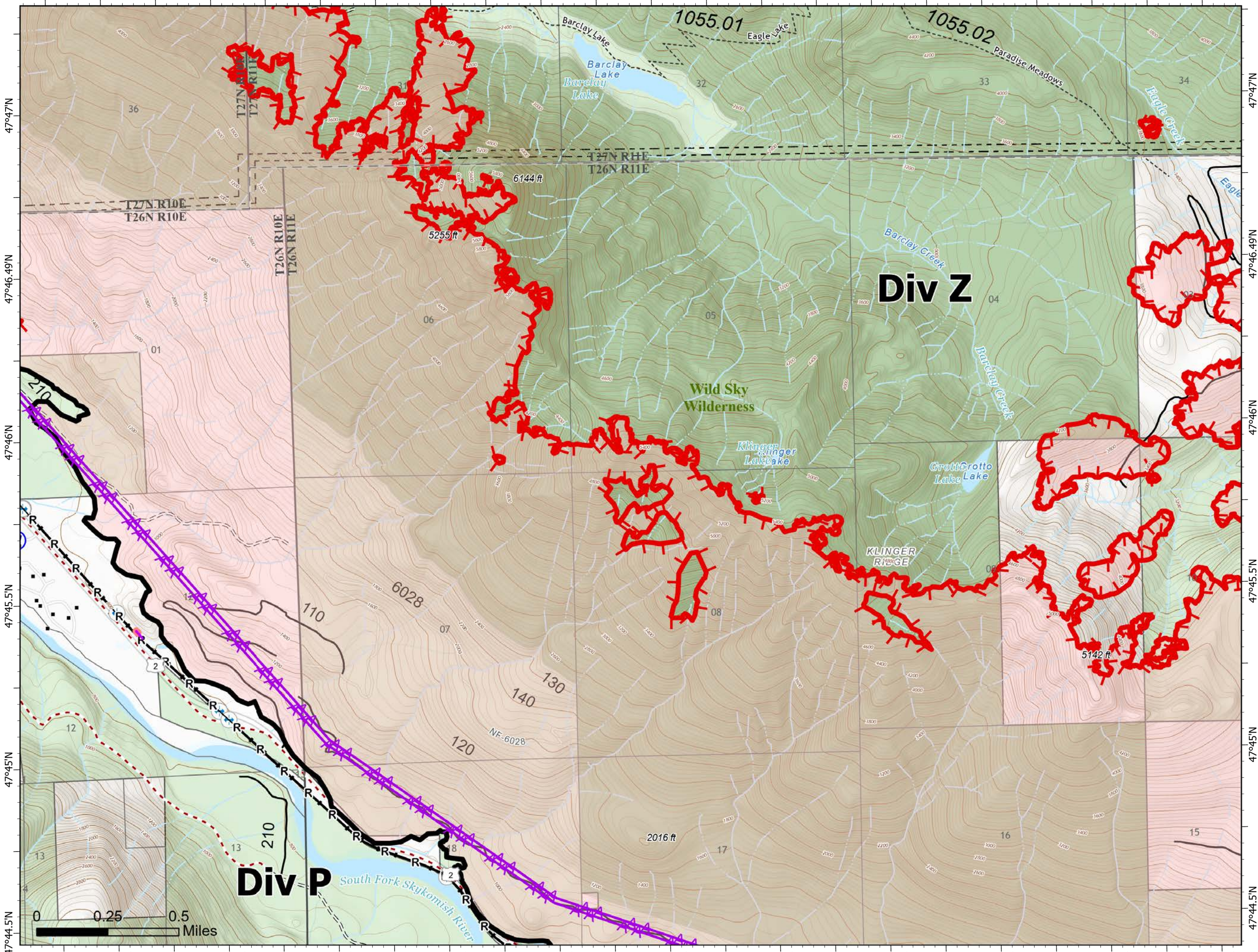


Page 8 of 14

- Water Source
- structures
- Completed Road as Line
- Aerial Hazard
- Retardant Drop
- Contained
- Uncontained
- Trail
- Bridges
- Railroads
- Open Roads
- Closed Roads
- Decommissioned Roads
- Trail
- county
- Wilderness
- US Forest Service (USFS)
- Private



Map updated:
10/12/2022 2032



121°28'W 121°27.5'W 121°27'W 121°26.5'W 121°26'W 121°25.5'W 121°25'W 121°24.5'W 121°24'W 121°23.5'W 121°23'W

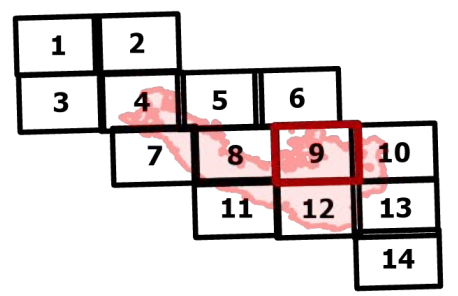
IAP

Bolt Creek

WA-NWS-000150

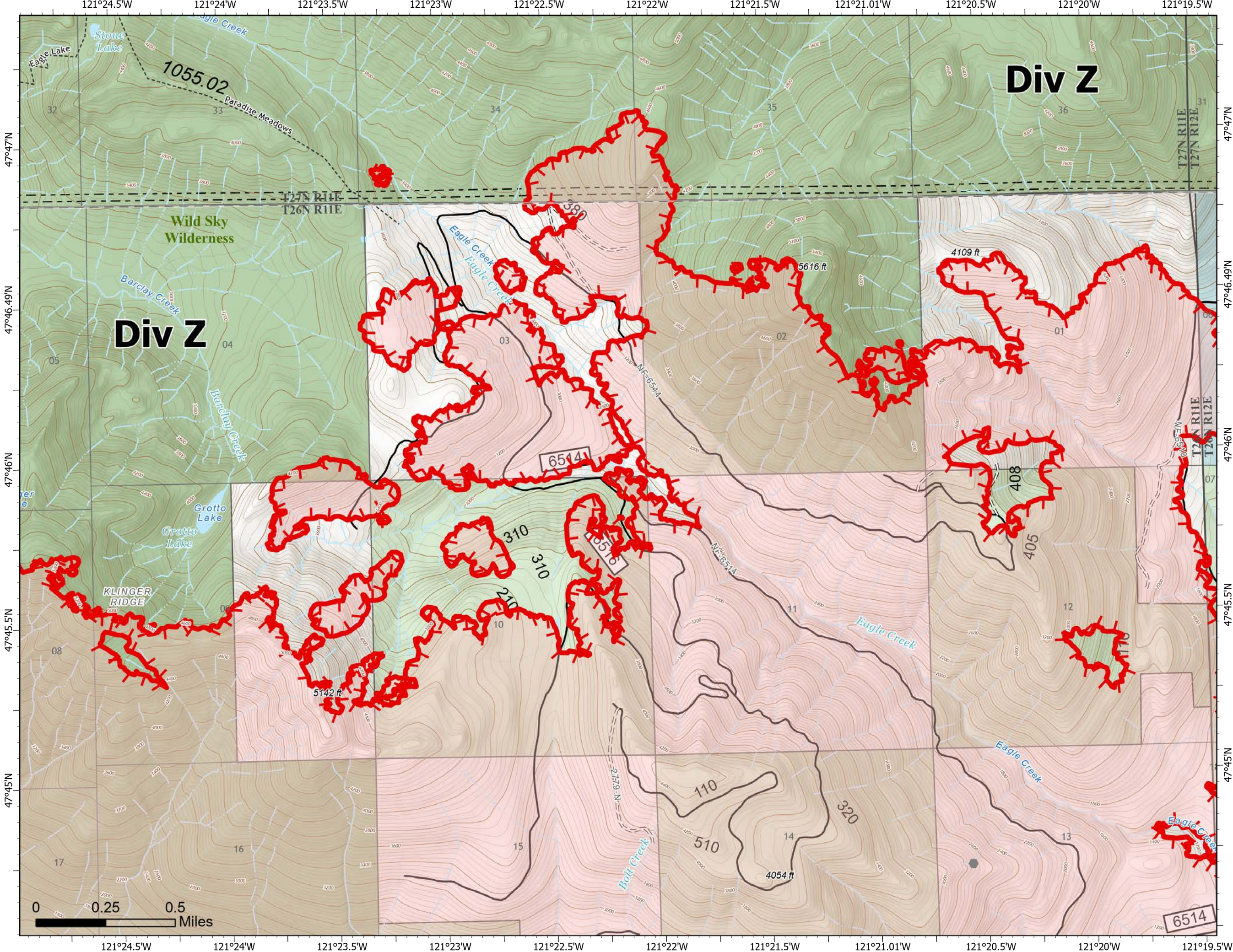
10/12/2022

13,748 acres at 10/11/2022 @1956



Page 9 of 14

- Other
- Uncontained
- Trail
- Open Roads
- Closed Roads
- Trail
- county
- Wilderness
- State
- US Forest Service (USFS)
- Private



Map updated:
10/12/2022 2032



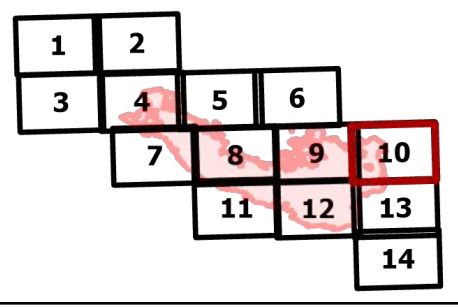
IAP

Bolt Creek

WA-NWS-000150

10/12/2022

13,748 acres at 10/11/2022 @1956

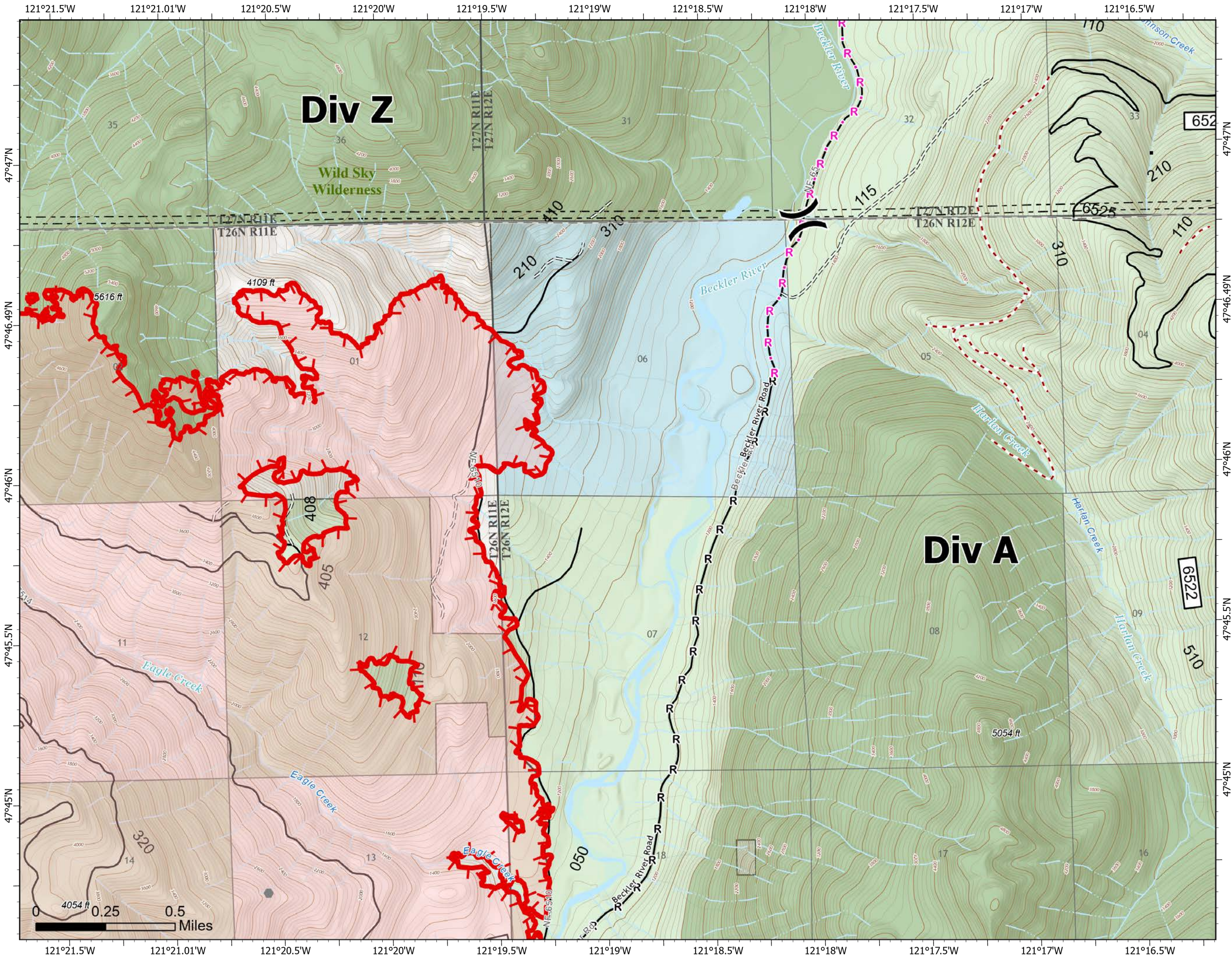


Page 10 of 14

- (X) Division Break
- Other
- structures
- Label Point
- Completed Road as Line
- Planned Road as Line
- Uncontained
- Trail
- Open Roads
- == Closed Roads
- - - Decommissioned Roads
- Trail
- - - county
- Wilderness
- State
- US Forest Service (USFS)
- Private



Map updated:
10/12/2022 2032



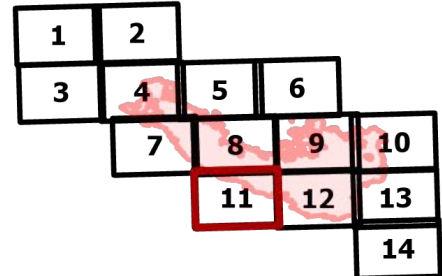
IAP

Bolt Creek

WA-NWS-000150

10/12/2022

13,748 acres at 10/11/2022 @1956

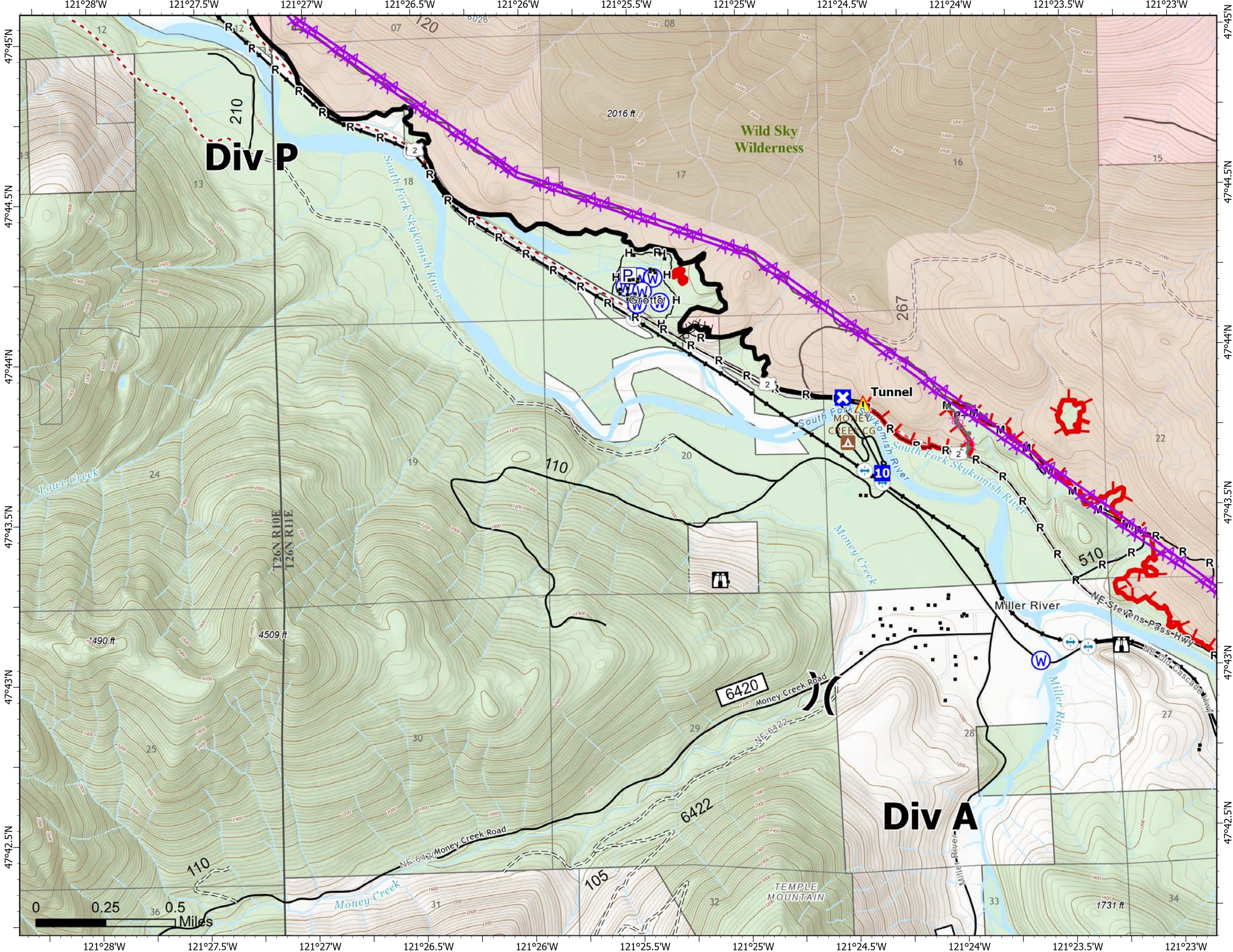


Page 11 of 14

- X Division Break
- Drop Point
- ⊠ Closure
- ⚠ Lookout
- ⚠ Tunnel
- Ⓜ Water Source
- structures
- Ⓜ Pump
- XX Completed Dozer Line
- H Completed Hand Line
- M Completed Mixed Construction Line
- P Completed Plow Line
- R Completed Road as Line
- Planned Dozer Line
- Other
- Aerial Hazard
- Contained
- Uncontained
- Ⓜ Trail
- Ⓜ Campground
- Ⓜ Bridges
- Ⓜ Railroads
- Open Roads
- Closed Roads
- Decommissioned Roads
- Ⓜ Trail
- Ⓜ county
- Wilderness
- US Forest Service (USFS)
- Private



Map updated:
10/12/2022 2033



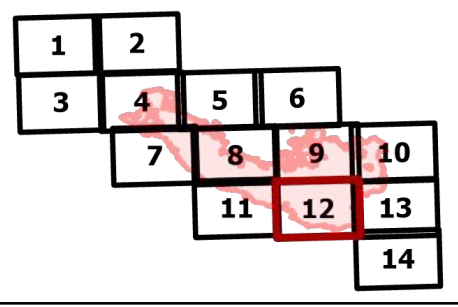
IAP

Bolt Creek

WA-NWS-000150

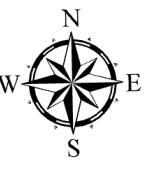
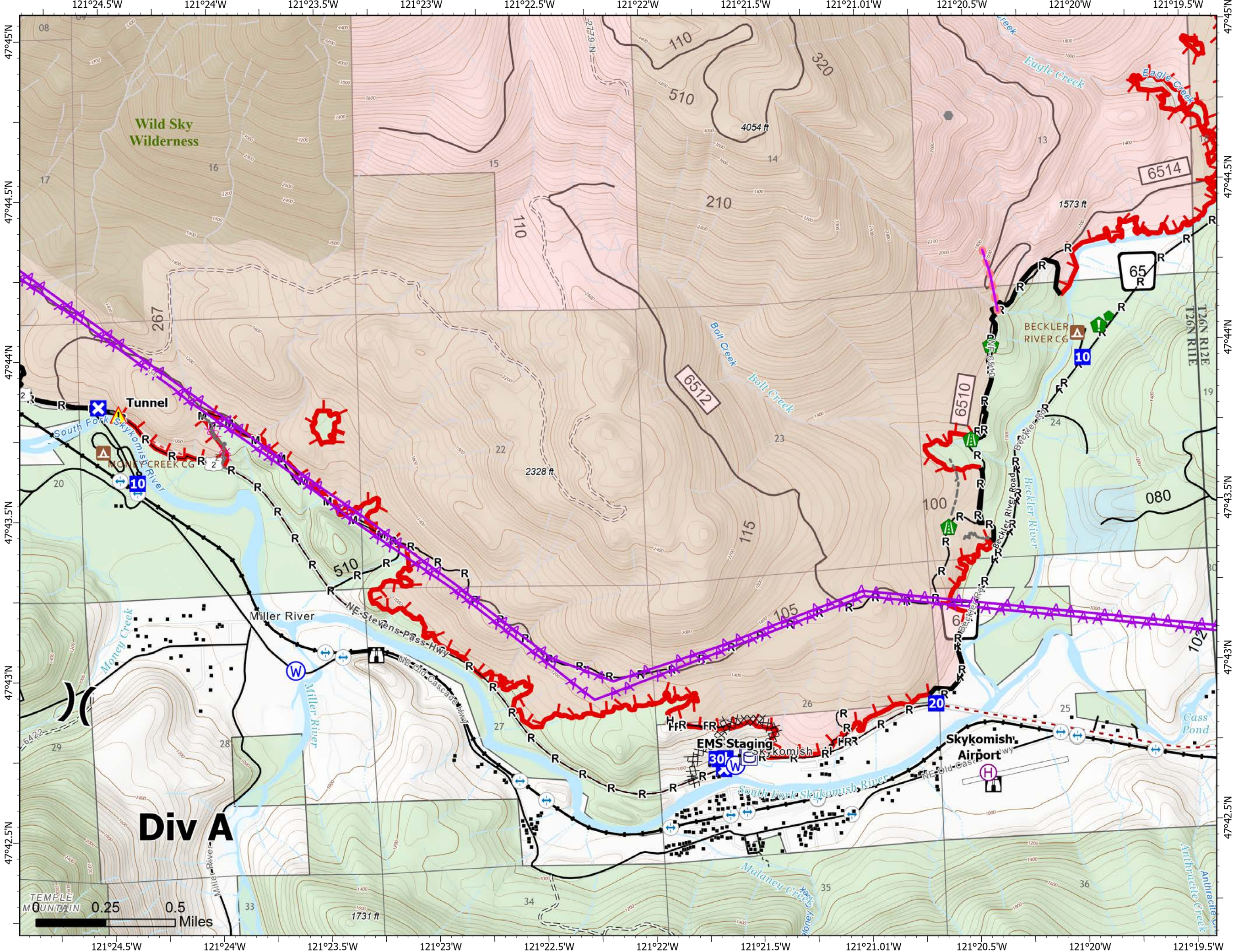
10/12/2022

13,748 acres at 10/11/2022 @1956



Page 12 of 14

- | | |
|-----------------------------------|--------------------------|
| Heli-base | Planned Dozer Line |
| Division Break | Other |
| Medical | Aerial Hazard |
| Drop Point | Retardant Drop |
| Closure | Contained |
| Lookout | Uncontained |
| Other | Trail |
| Road Repair | Runway |
| Resource Location | Campground |
| Repair Point | Bridges |
| Culvert | Railroads |
| Tunnel | Open Roads |
| Water Source | Closed Roads |
| structures | Decommissioned Roads |
| Pump | Trail |
| Water Tank | Runway |
| Completed Dozer Line | county |
| Completed Hand Line | Wilderness |
| Completed Mixed Construction Line | State |
| Completed Plow Line | US Forest Service (USFS) |
| Completed Road as Line | Private |



Map updated:
10/12/2022 2033



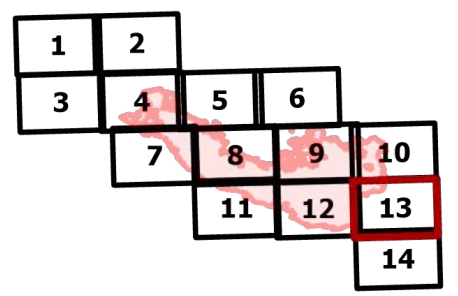
IAP

Bolt Creek

WA-NWS-000150

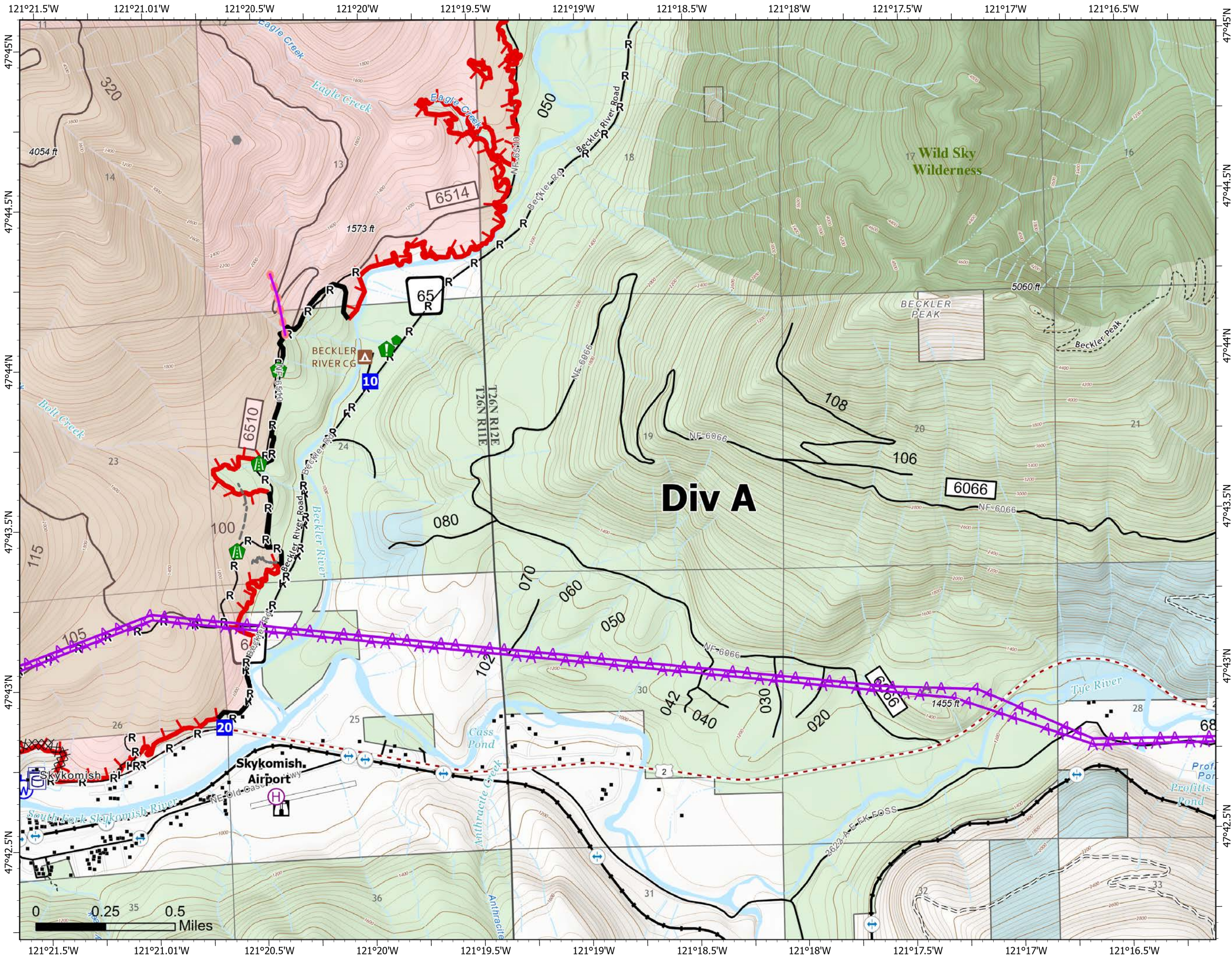
10/12/2022

13,748 acres at 10/11/2022 @1956



Page 13 of 14

- | | |
|--|--|
| | |
| | |
| | |
| | |
| | |
| | |
| | |
| | |
| | |
| | |
| | |
| | |
| | |
| | |
| | |
| | |
| | |
| | |
| | |



Map updated:
10/12/2022 2033



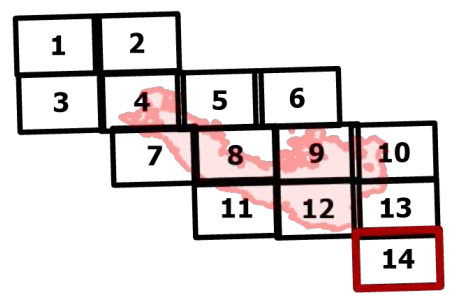
IAP

Bolt Creek

WA-NWS-000150

10/12/2022

13,748 acres at 10/11/2022 @1956

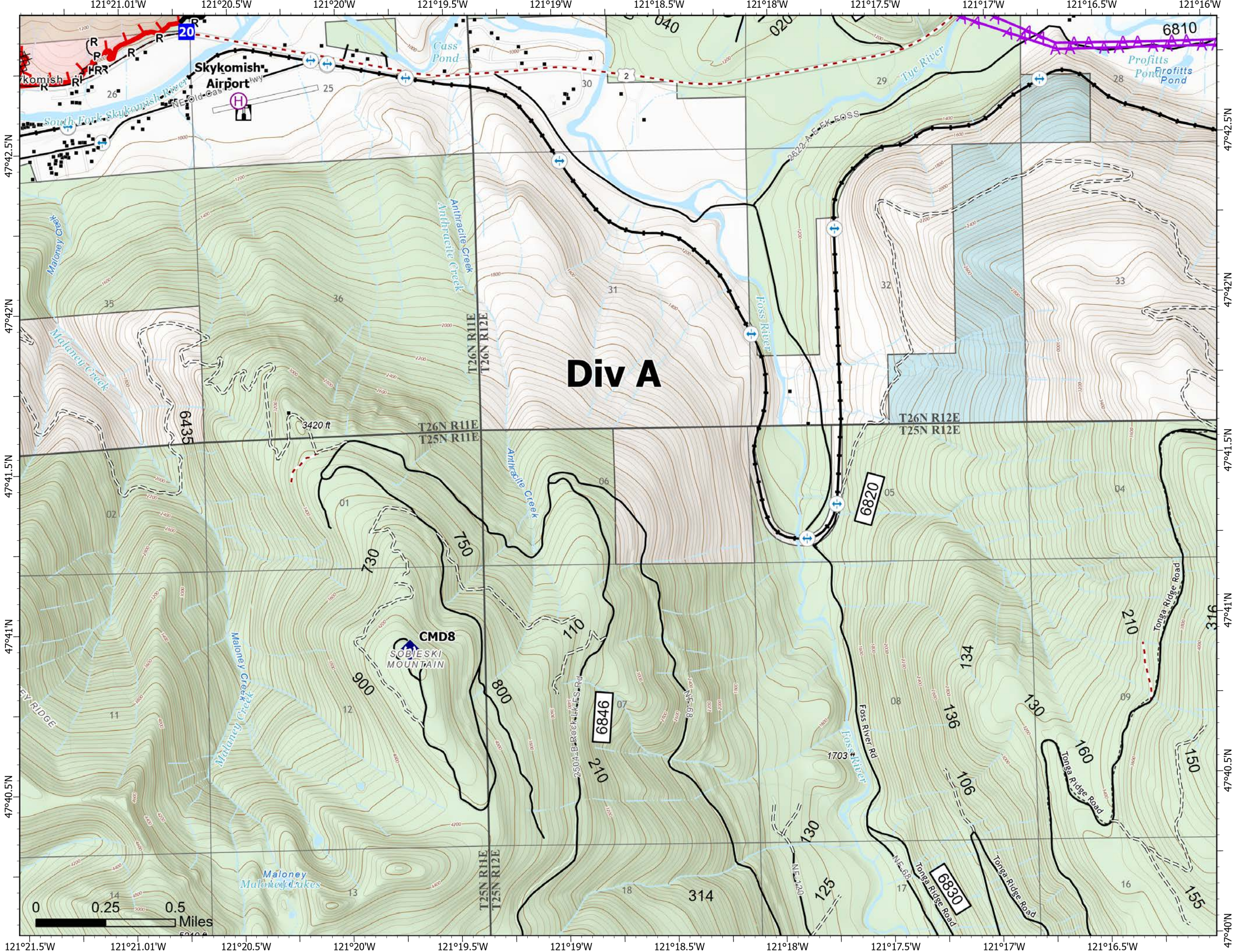


Page 14 of 14

- Helibase
- Drop Point
- Lookout
- Repeater
- structures
- Completed Dozer Line
- Completed Hand Line
- Completed Road as Line
- Aerial Hazard
- Contained
- Uncontained
- Trail
- Runway
- Bridges
- Railroads
- Open Roads
- Closed Roads
- Decommissioned Roads
- Decommissioned Roads
- Trail
- Runway
- county
- State
- US Forest Service (USF)
- Private



Map updated:
10/12/2022 2034



Transportation

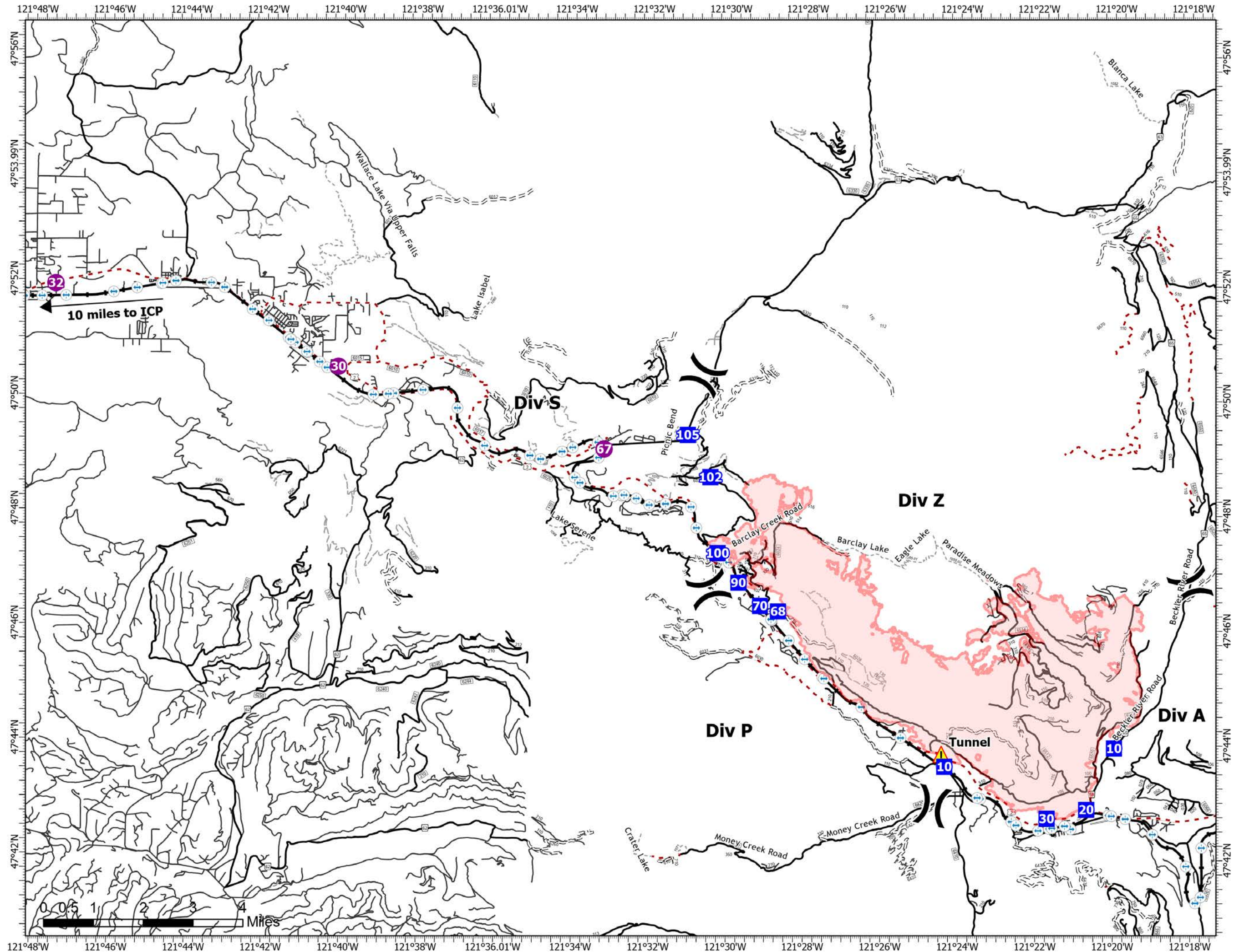
Bolt Creek

WA-NWS-000150

10/12/2022

13,748 acres at 10/11/2022 @1956

- Helispot
- ⌘ Division Break
- Drop Point
- ▲ Tunnel
- Secondary Hwy
- Local Road
- - - 4WD
- · - · - Trail
- Runway
- ⊕ Bridges
- Railroads
- Open Roads
- = = = Closed Roads
- - - Decommissioned Roads
- · - · - Decommissioned Roads



SE WASHINGTON
ALL HAZARDOUS
TYPE 3
INTER-AGENCY TEAM

Map Updated
10/12/2022 2026

0 0.5 1 2 3 4 Miles