

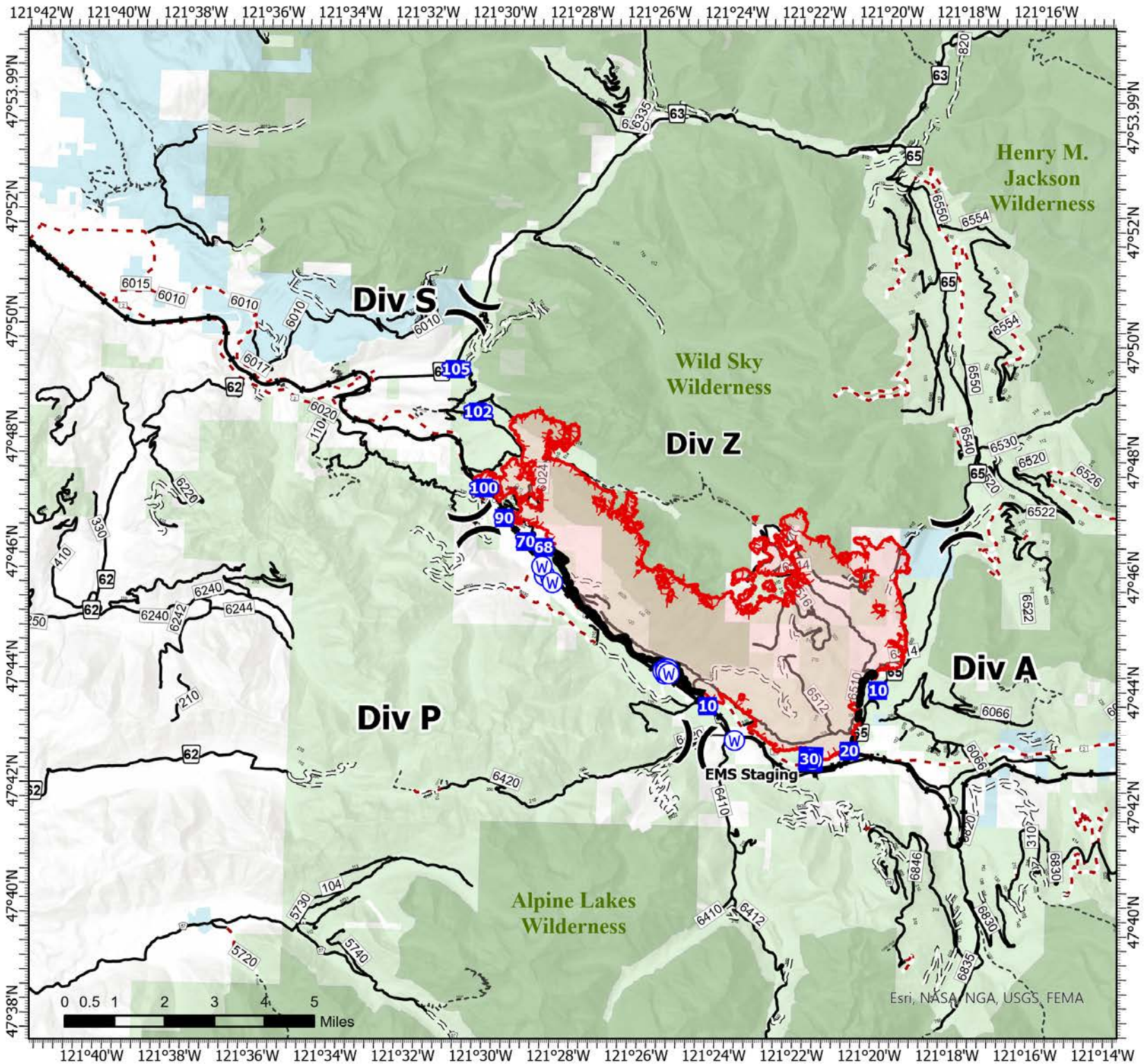
# IAP

## Bolt Creek

### WA-NWS-000150

#### 10/13/2022

13,748 acres at 10/11/2022 @1956



- (X) Division Break
- ⊕ Medical
- Drop Point
- ⊙ Water Source
- ▬ Contained
- ▬ Uncontained
- Bureau of Land Management (BLM)
- State
- US Forest Service (USFS)
- Private
- Undetermined
- ⚡ Railroads
- ▬ Open Roads
- ▬ Closed Roads
- ▬ Decommissioned Roads
- ▬ Decommissioned Roads
- ▬ Trail
- Wilderness



Map updated:  
10/12/2022 2119



Esri, NASA, NGA, USGS, FEMA