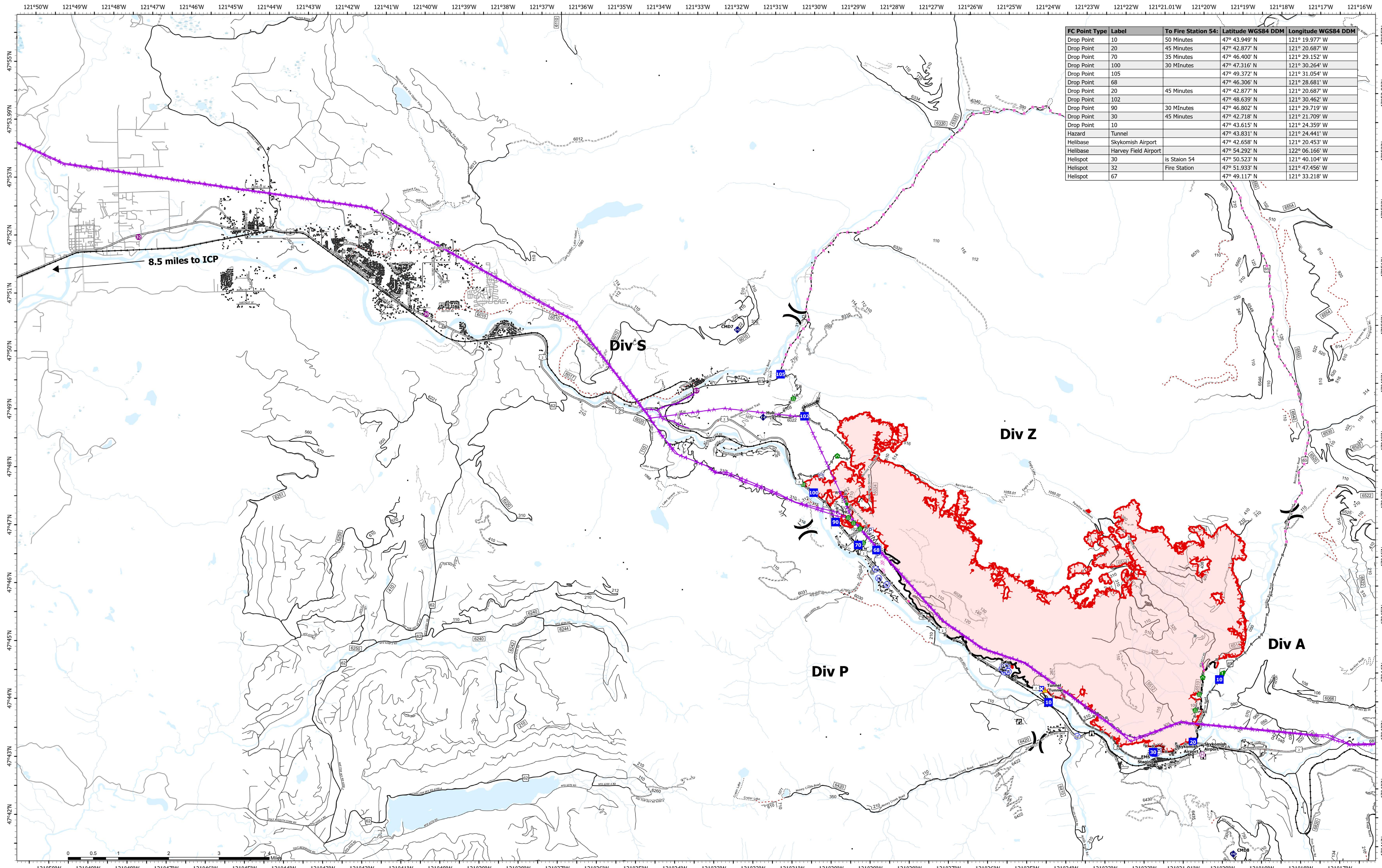


# Medical Transportation



FC Point Type	Label	To Fire Station 54:	Latitude WGS84 DDM	Longitude WGS84 DDM
Drop Point	10	50 Minutes	47° 43.949' N	121° 19.977' W
Drop Point	20	45 Minutes	47° 42.877' N	121° 20.687' W
Drop Point	70	35 Minutes	47° 46.400' N	121° 29.152' W
Drop Point	100	30 Minutes	47° 47.316' N	121° 30.264' W
Drop Point	105		47° 49.372' N	121° 31.054' W
Drop Point	68		47° 46.306' N	121° 28.681' W
Drop Point	20	45 Minutes	47° 42.877' N	121° 20.687' W
Drop Point	102		47° 48.639' N	121° 30.462' W
Drop Point	90	30 Minutes	47° 46.802' N	121° 29.719' W
Drop Point	30	45 Minutes	47° 42.718' N	121° 21.709' W
Drop Point	10		47° 43.615' N	121° 24.359' W
Hazard	Tunnel		47° 43.831' N	121° 24.441' W
Helibase	Skykomish Airport		47° 42.658' N	121° 20.453' W
Helibase	Harvey Field Airport		47° 54.292' N	122° 06.166' W
Helispot	30	Is Station 54	47° 50.523' N	121° 40.104' W
Helispot	32	Fire Station	47° 51.933' N	121° 47.456' W
Helispot	67		47° 49.117' N	121° 33.218' W

**Bolt Creek**  
**WA-NWS-000150**  
**10/13/2022**  
 13,748 acres at 10/11/2022 @1956  
 Map Updated:  
 10/12/2022 2059

- Pump
- Water Tank
- Lookout
- Fire Station
- Helibase
- Division Break
- Medical
- Drop Point
- Closure
- Lookout
- Other
- Repeater
- Bridge
- Stream Crossing
- Road Repair
- Resource Location
- Repair Point
- Culvert
- Hazard
- Water Source
- Completed Burnout
- Completed Dozer Line
- Completed Fuel Break
- Completed Hand Line
- Completed Mixed Construction Line
- Completed Plow Line
- Completed Road as Line
- Planned Dozer Line
- Planned Road as Line
- Other
- Aerial Hazard
- Retardant Drop
- Contained
- Uncontained
- Trail
- Railroads
- Open Roads
- Closed Roads
- Decommissioned Roads
- Major Highways

