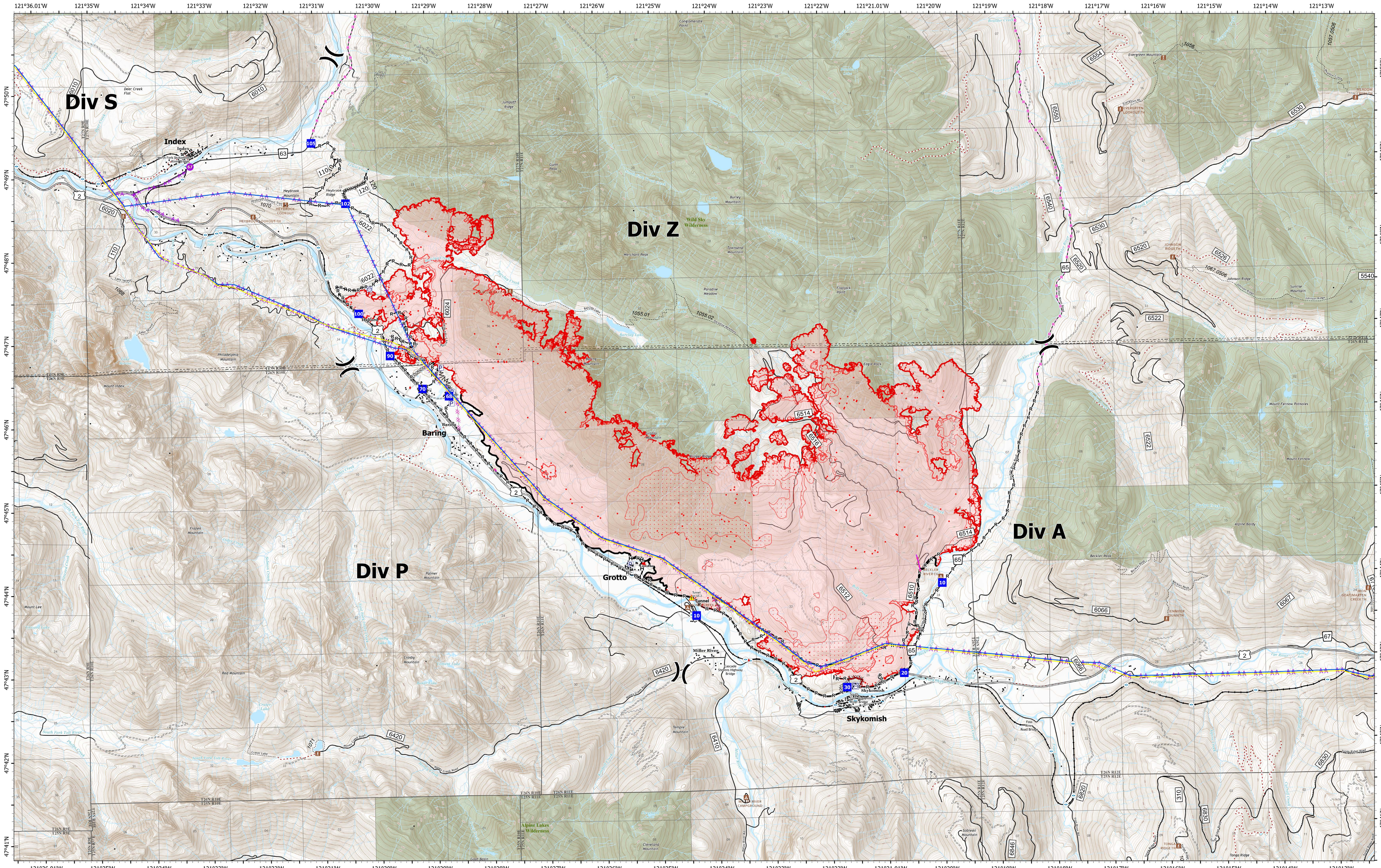


Operations



Bolt Creek
WA-NWS-000150
10/13/2022

13,748 acres at 10/11/2022 @1956

10/12/2022 2105

- | | | | | | |
|--|---|---|---|---|--|
| <ul style="list-style-type: none"> ● IR Isolated Heat Source ● Possible IR Heat Source □ IR Heat Perimeter □ IR Intense Heat □ IR Scattered Heat ⊠ Pump ⊠ Water Tank ⊠ Division Break ● Hellsport | <ul style="list-style-type: none"> ■ Drop Point — 345kv High Voltage — 345kv High Voltage — Completed Burnout — Completed Dozer Line — Completed Fuel Break — Completed Hand Line — Completed Mixed Construction Line | <ul style="list-style-type: none"> — Completed Plow Line — Completed Road as Line — Planned Dozer Line — Planned Road as Line — Other — Aerial Hazard — Retardant Drop — Contained — Uncontained | <ul style="list-style-type: none"> ⊠ Bridges ⊠ Campground ⊠ Lookout/Cabin ⊠ Trailhead ⊠ Railroads — Major Highways — Forest Service Open Roads — Forest Service Closed Roads — Forest Service Decommissioned Roads | <ul style="list-style-type: none"> ⊠ Bridges — Railroads — county — Wilderness — Bureau of Indian Affairs (BIA) — Bureau of Land Management (BLM) — Bureau of Reclamation (BOR) — Department of Defense (DOD) — Local Government | <ul style="list-style-type: none"> — National Park Service (NPS) — Other Federal — State — US Fish and Wildlife Service (USFWS) — US Forest Service (USFS) — Private |
|--|---|---|---|---|--|

