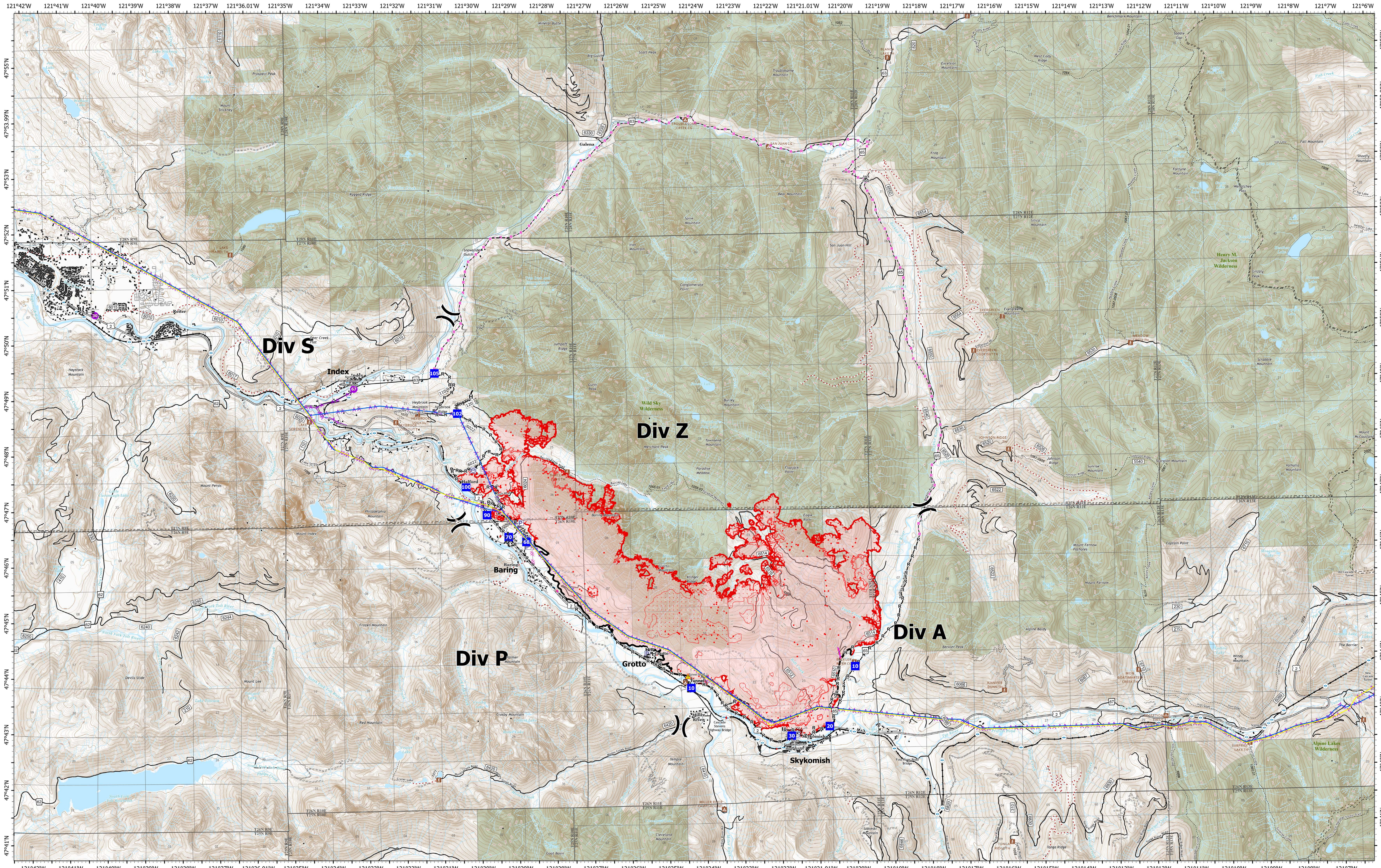


Planning

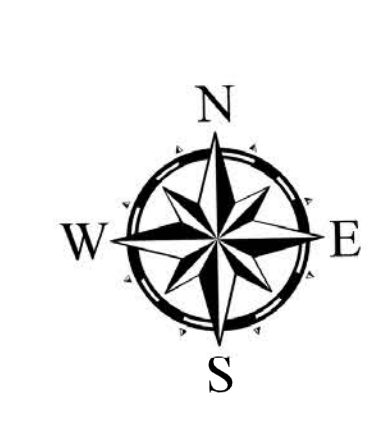


Bolt Creek
WA-NWS-000150
10/13/2022

13,748 acres at 10/11/2022 @1956

10/12/2022 2126

- | | | | | | |
|--|---|---|--|--|--|
| <ul style="list-style-type: none"> • IR Isolated Heat Source • Possible IR Heat Source ◻ IR Heat Perimeter ◻ IR Intense Heat ◻ IR Scattered Heat ⊡ Pump ⊡ Water Tank ⊡ Division Break ● Hellsport | <ul style="list-style-type: none"> ▲ Drop Point — 345kv High Voltage — Completed Burnout ⊡ Completed Dozer Line ⊡ Completed Fuel Break ⊡ Completed Hand Line ⊡ Completed Mixed Construction Line | <ul style="list-style-type: none"> — Completed Plow Line — Completed Road as Line — Planned Dozer Line — Planned Road as Line — Other — Aerial Hazard — Retardant Drop — Contained — Uncontained | <ul style="list-style-type: none"> ⊡ Bridges ⊡ Campground ⊡ Day Use/Picnic ⊡ Lookout/Cabin ⊡ Trailhead — Railroads — Major Highways — Forest Service Open Roads — Forest Service Closed Roads | <ul style="list-style-type: none"> --- Forest Service Decommissioned Roads ⊡ Bridges — Railroads ⊡ Wilderness ⊡ Bureau of Indian Affairs (BIA) ⊡ Bureau of Land Management (BLM) ⊡ Bureau of Reclamation (BOR) ⊡ Department of Defense (DOD) | <ul style="list-style-type: none"> ⊡ Local Government ⊡ National Park Service (NPS) ⊡ Other Federal ⊡ State ⊡ US Fish and Wildlife Service (USFWS) ⊡ US Forest Service (USFS) ⊡ Private |
|--|---|---|--|--|--|



0 0.5 1 2 Miles

