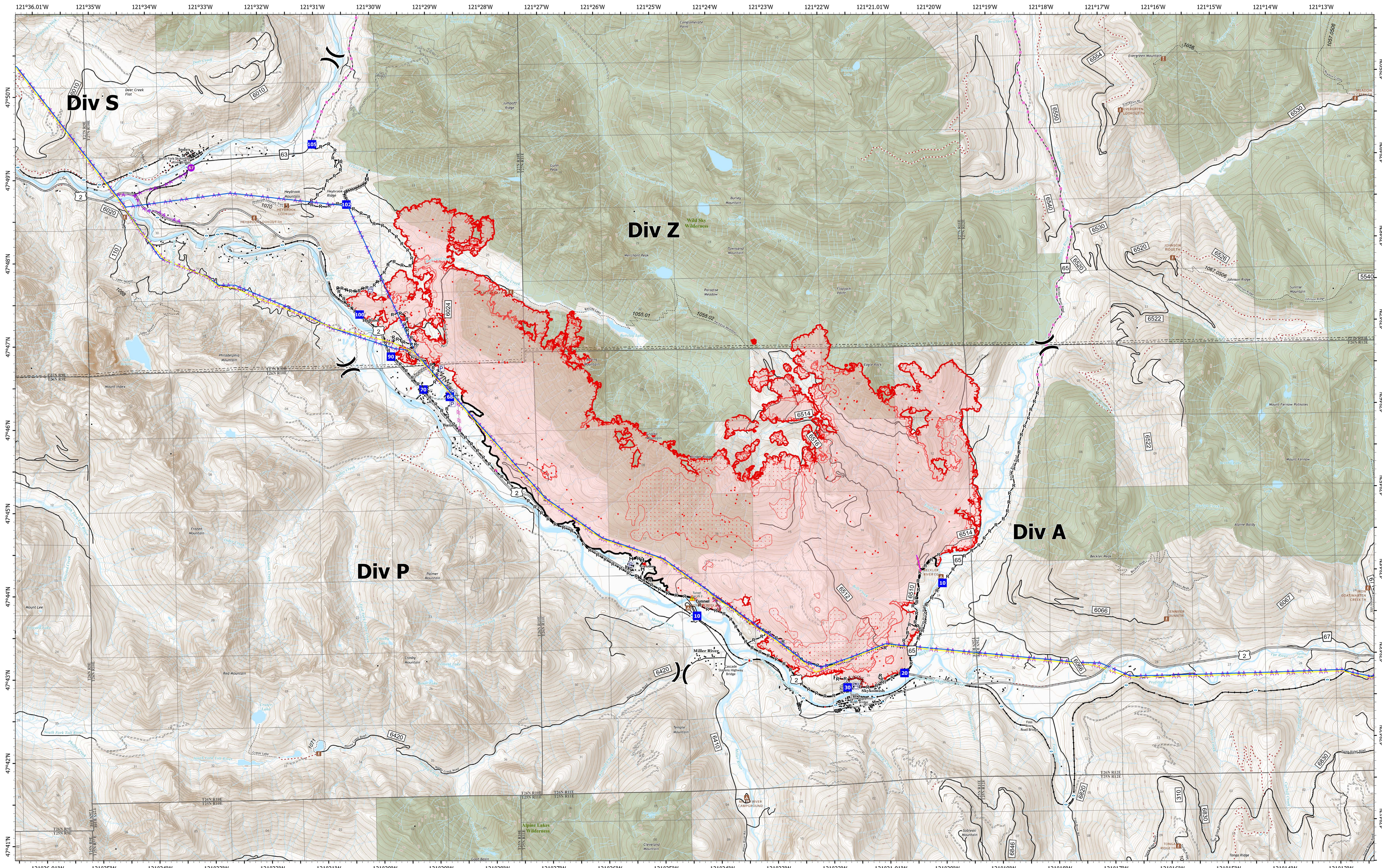


# Situation Unit

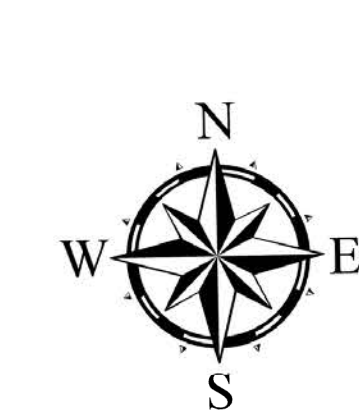


**Bolt Creek**  
**WA-NWS-000150**  
**10/13/2022**

13,748 acres at 10/11/2022 @1956

10/12/2022 2220

- |  |   |   |   |   |  |
|--|---|---|---|---|--|
| <ul style="list-style-type: none"> <li>● IR Isolated Heat Source</li> <li>● Possible IR Heat Source</li> <li>□ IR Heat Perimeter</li> <li>□ IR Intense Heat</li> <li>□ IR Scattered Heat</li> <li>⊠ Pump</li> <li>⊠ Water Tank</li> <li>⊠ Division Break</li> <li>● Hellsport</li> </ul> | <ul style="list-style-type: none"> <li>■ Drop Point</li> <li>— 345kv High Voltage</li> <li>— 345kv High Voltage</li> <li>— Completed Burnout</li> <li>— Completed Dozer Line</li> <li>— Completed Fuel Break</li> <li>— Completed Hand Line</li> <li>— Completed Mixed Construction Line</li> </ul> | <ul style="list-style-type: none"> <li>— Completed Plow Line</li> <li>— Completed Road as Line</li> <li>— Planned Dozer Line</li> <li>— Planned Road as Line</li> <li>— Other</li> <li>— Aerial Hazard</li> <li>— Retardant Drop</li> <li>— Contained</li> <li>— Uncontained</li> </ul> | <ul style="list-style-type: none"> <li>⊠ Bridges</li> <li>⊠ Campground</li> <li>⊠ Lookout/Cabin</li> <li>⊠ Trailhead</li> <li>— Railroads</li> <li>— Major Highways</li> <li>— Forest Service Open Roads</li> <li>— Forest Service Closed Roads</li> <li>— Forest Service Decommissioned Roads</li> </ul> | <ul style="list-style-type: none"> <li>⊠ Bridges</li> <li>— Railroads</li> <li>— county</li> <li>— Wilderness</li> <li>— Bureau of Indian Affairs (BIA)</li> <li>— Bureau of Land Management (BLM)</li> <li>— Bureau of Reclamation (BOR)</li> <li>— Department of Defense (DOD)</li> <li>— Local Government</li> </ul> | <ul style="list-style-type: none"> <li>— National Park Service (NPS)</li> <li>— Other Federal</li> <li>— State</li> <li>— US Fish and Wildlife Service (USFWS)</li> <li>— US Forest Service (USFS)</li> <li>— Private</li> </ul> |
|--|---|---|---|---|--|



0 0.42 0.85 1.7 Miles

