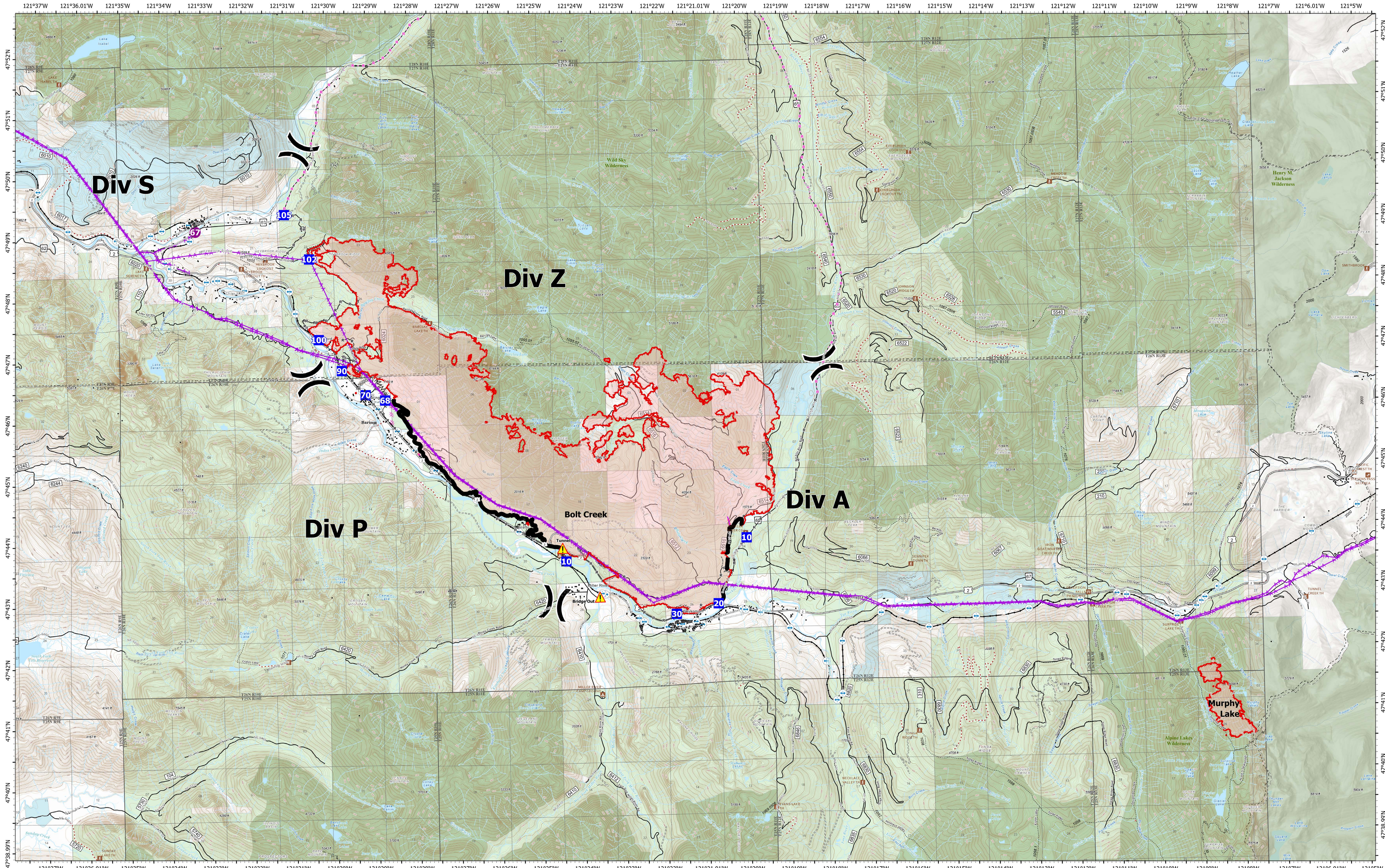


Briefing



Bolt Creek
WA-NWS-000150
 14,714 acres at 10/17/2022 @1917
10/19/2022

Murphy Lake
WA-MSF-000267
 371 acres at 10/17/2022 @1917

- Helispot
- ✕ Division Break
- ▲ Drop Point
- ⚡ Tunnel
- Contained
- Uncontained
- ⚙ Bridges
- ⛺ Campground
- 🏠 Day Use/Picnic
- 🛖 Lookout/Cabin
- ⬆ SKI AREA ALPINE
- 🚶 Trailhead
- 🚂 Railroads
- 🌲 Forest Service Open Roads
- 🚧 Forest Service Closed Roads
- 🛤 Forest Service Decommissioned Roads
- 🛤 Trail
- 🏠 county
- 🌲 Wilderness
- 🏠 Bureau of Land Management (BLM)
- 🇺🇸 State
- 🌲 US Forest Service (USFS)
- 🏠 Private
- 🛣 Major Highways



0 0.5 1 2 Miles

