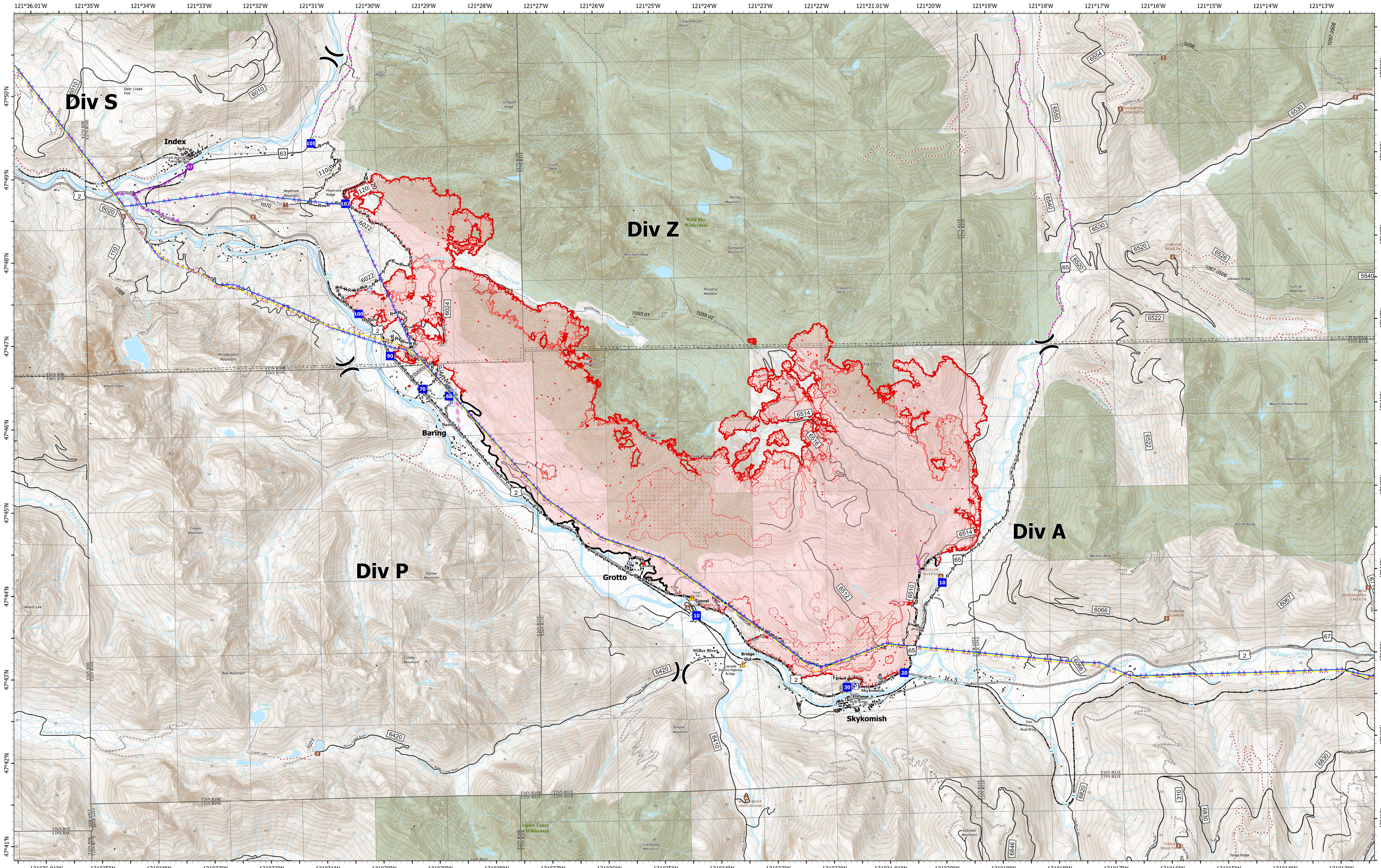


Operations

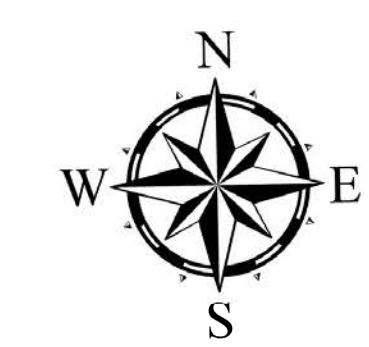


Bolt Creek
WA-NWS-000150
10/19/2022

14,714 acres at 10/17/2022 @1917

10/18/2022 1721

- | | | | | | |
|--|---|---|---|---|--|
| <ul style="list-style-type: none"> IR Isolated Heat Source IR Heat Perimeter IR Intense Heat IR Scattered Heat Other Property Pump Water Tank Division Break Hellspot | <ul style="list-style-type: none"> Drop Point 345kv High Voltage Completed Burnout Completed Dozer Line Completed Fuel Break Completed Hand Line Completed Mixed Construction Line | <ul style="list-style-type: none"> Completed Plow Line Completed Road as Line Planned Dozer Line Trailhead Road as Line Access or Improved Road Other Aerial Hazard Retardant Drop Contained | <ul style="list-style-type: none"> Uncontained Campground Lookout/Cabin Trailhead Railroads Major Highways Forest Service Open Roads Forest Service Closed Roads Forest Service Decommissioned Roads | <ul style="list-style-type: none"> Bridges Railroads county Wilderness Bureau of Indian Affairs (BIA) Bureau of Land Management (BLM) Bureau of Reclamation (BOR) Department of Defense (DOD) Local Government | <ul style="list-style-type: none"> National Park Service (NPS) Other Federal State US Fish and Wildlife Service (USFWS) US Forest Service (USFS) Private |
|--|---|---|---|---|--|



0 0.42 0.85 1.7 Miles

