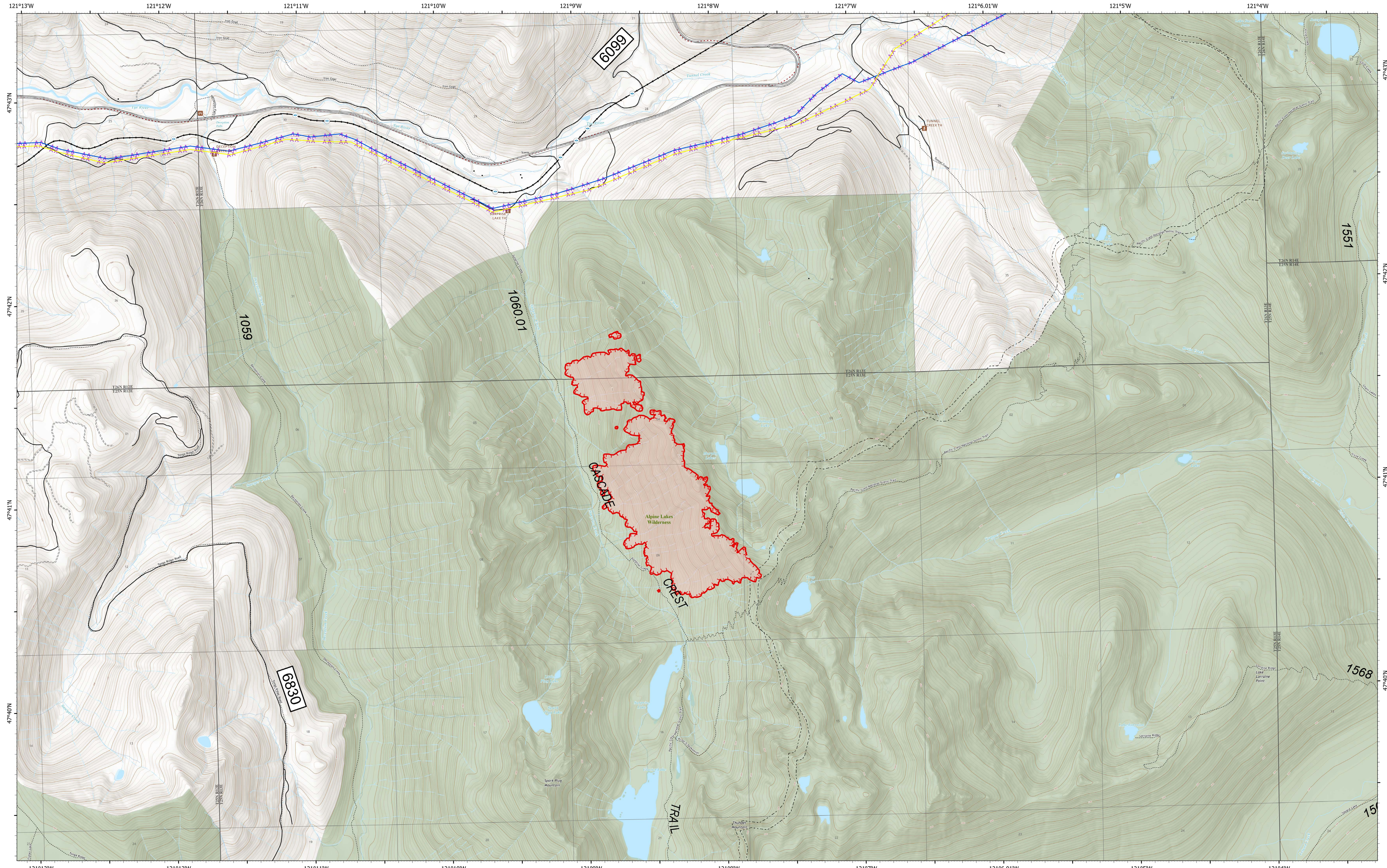


Situation Unit



Murphy Lake
WA-MSF-000267

10/19/2022

371 acres at 10/17/2022 @1917

10/18/2022 1720

- | | | | |
|--------------------|-------------------------------------|---------------------------------|--------------------------------------|
| 345kv High Voltage | Major Highways | Wilderness | Other Federal |
| 345kv High Voltage | Forest Service Open Roads | Bureau of Indian Affairs (BIA) | State |
| Aerial Hazard | Forest Service Closed Roads | Bureau of Land Management (BLM) | US Fish and Wildlife Service (USFWS) |
| Uncontained | Forest Service Decommissioned Roads | Bureau of Reclamation (BOR) | US Forest Service (USFS) |
| Day Use/Picnic | Bridges | Department of Defense (DOD) | Private |
| Trailhead | Railroads | Local Government | |
| Railroads | county | National Park Service (NPS) | |

