

Ops - Division X

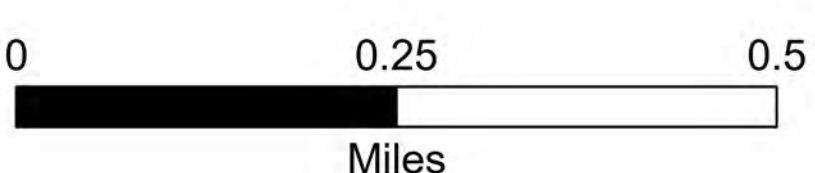
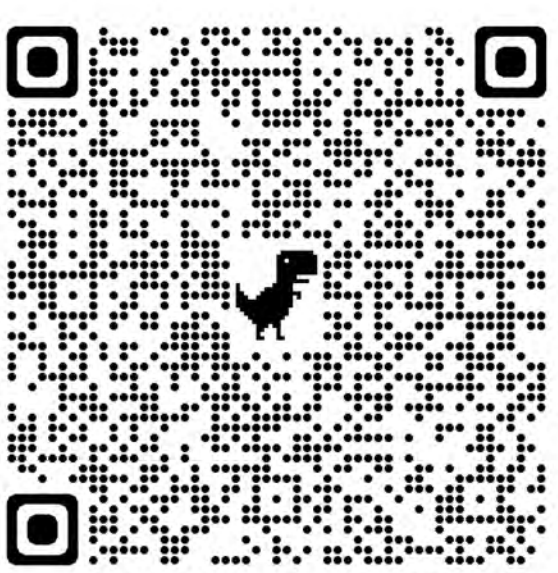
Boulder Mountain
WA-NES-001858
9/10/2022

1,900 Acres
Acres from IR on 9/9/22 2136

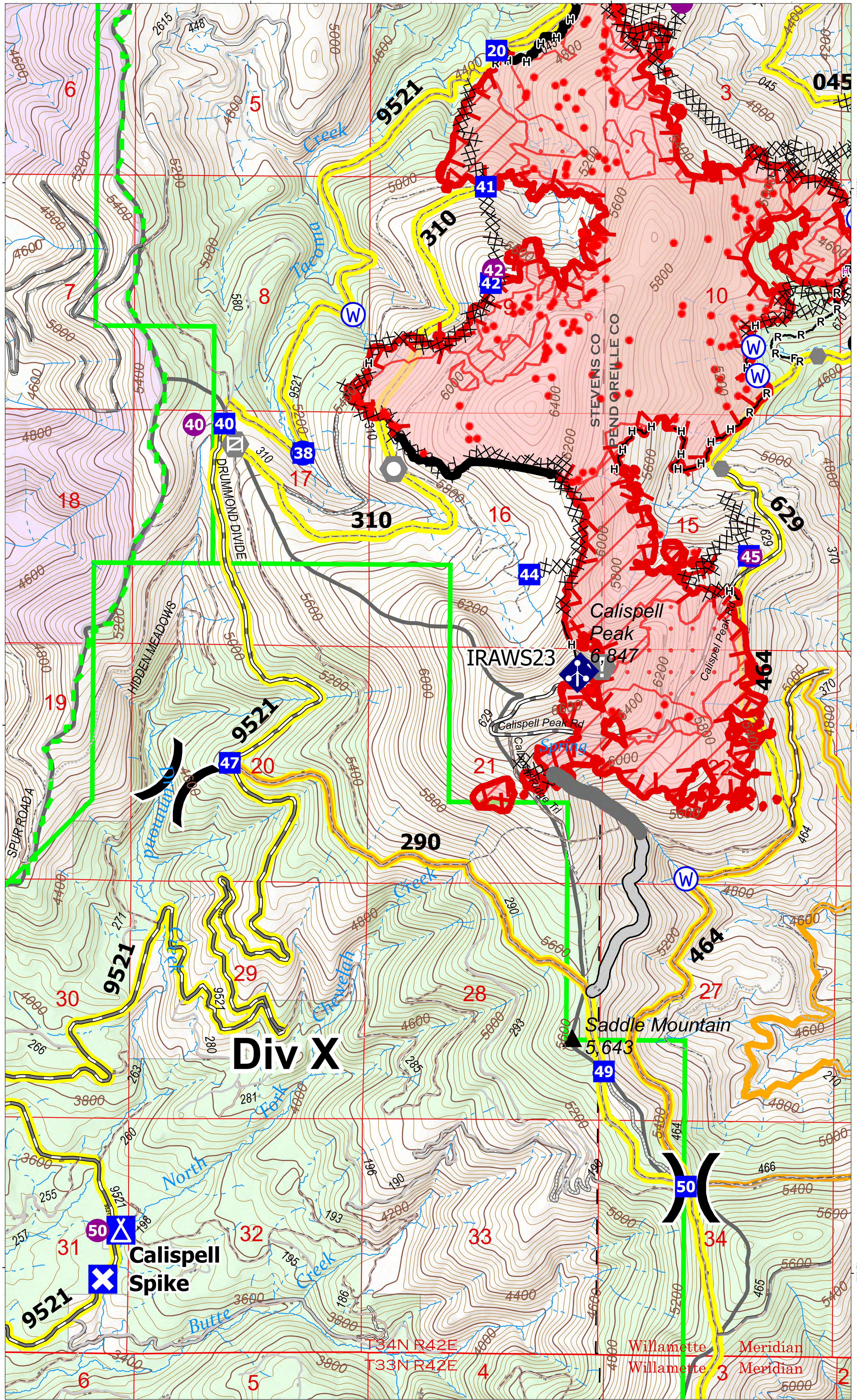
- Drop Point
- Closure
- Camp
- Helispot
- Division Break
- Value at Risk
- Other
- Landmark
- Gate
- Mobile Weather Unit
- Repeater
- Water Source
- IR Isolated Heat Source
- Completed Dozer Line
- Completed Hand Line
- Completed Road as Line
- Planned Hand Line
- Access or Improved Road
- Other
- Temporary Flight Restriction
- Stimson Road Brushing
- Contained
- Uncontained
- IR Heat Perimeter
- IR Intense Heat
- IR Scattered Heat
- Wildfire Daily Fire Perimeter
- Road - Closed
- Road - Light Duty - Dirt
- Road - Light Duty - Gravel
- Road - Light Duty - Unspecified Composition
- Road - Unimproved
- Forest Service Land
- U.S. Fish Wildlife Service Lands
- State Boundary Fill



Team 7



9/10/2022 0401
North American 1983 Datum, Lat,Long Grid



Div X

Saddle Mountain
5,643

Calispell Peak
6,847

Calispell Spike

Willamette Meridian
Willamette 3 Meridian

117°32'W

117°30'W