

# Ops - Division X

Boulder Mountain  
WA-NES-001858

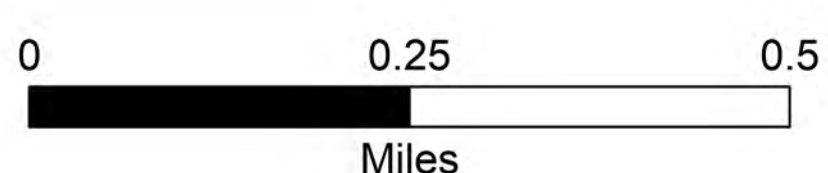
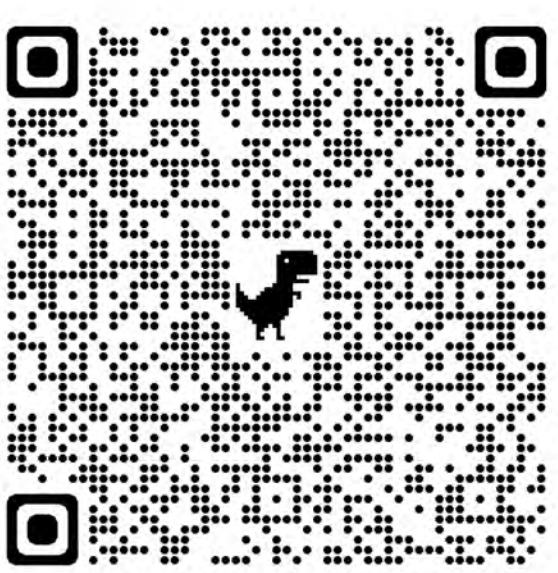
9/11/2022

2,076 acres  
Acres from IR on 09/10/2022 2156

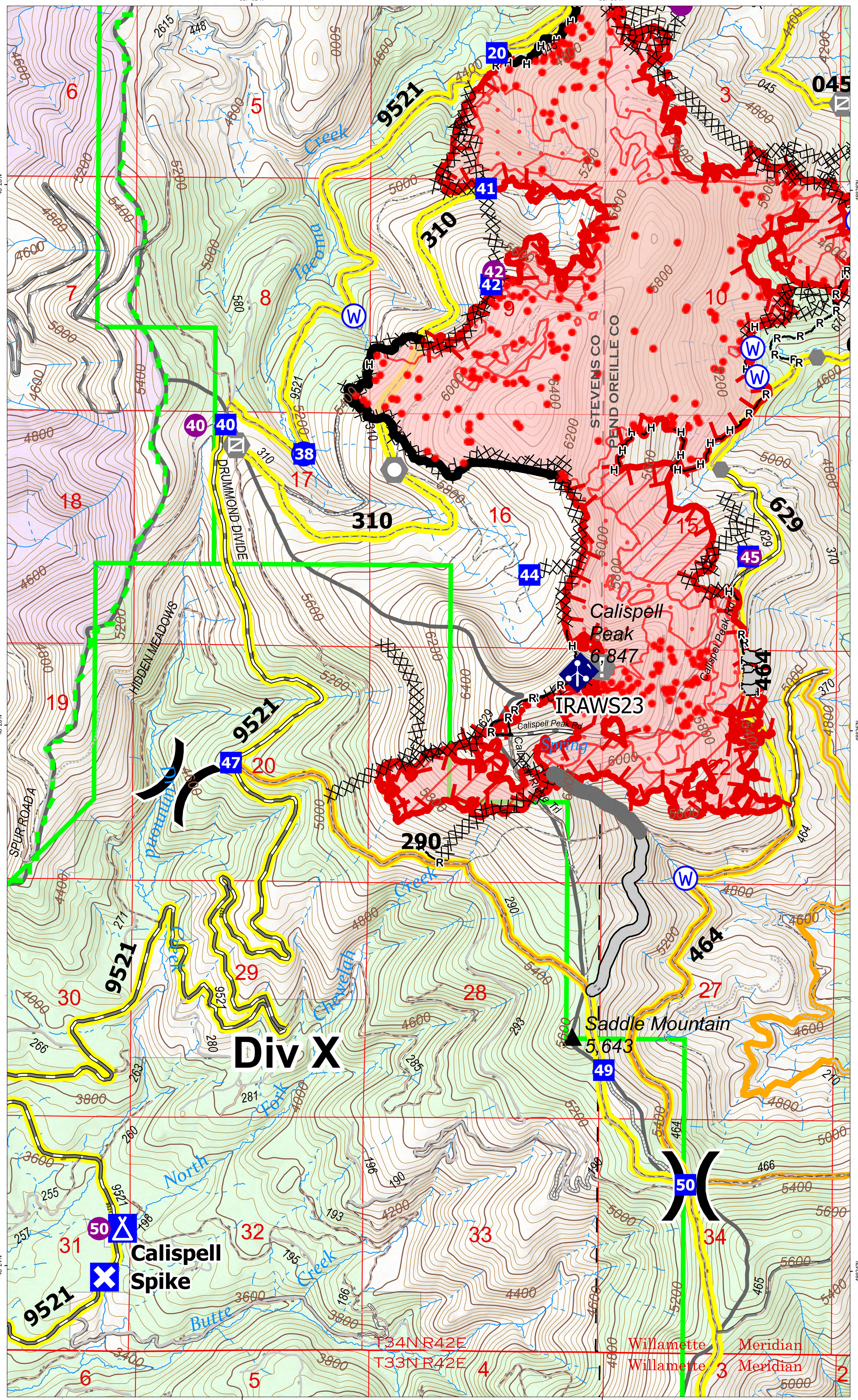
- Drop Point
- Closure
- Camp
- Helispot
- Division Break
- Value at Risk
- Other
- Landmark
- Gate
- Mobile Weather Unit
- Repeater
- Water Source
- IR Isolated Heat Source
- Completed Dozer Line
- Completed Hand Line
- Completed Road as Line
- Access or Improved Road
- Other
- Temporary Flight Restriction
- Stimson Road Brushing
- Contained
- Uncontained
- IR Heat Perimeter
- IR Intense Heat
- IR Scattered Heat
- Wildfire Daily Fire Perimeter
- Road - Closed
- Road - Light Duty - Dirt
- Road - Light Duty - Gravel
- Road - Light Duty - Unspecified Composition
- Road - Unimproved
- Forest Service Land
- U.S. Fish Wildlife Service Lands
- State Boundary Fill



Team 7



9/11/2022 0359  
North American 1983 Datum, Lat,Long Grid



## Div X

### Calispell Spike

### Saddle Mountain

### IRAWS23

### Calispell Peak

### STEVENS CO PEND OREILLE CO

T34N R42E  
T33N R42E

Willamette Meridian  
Willamette 3 Meridian