

Pilot Map

Boulder Mountain
WA-NES-0001858
9/11/2022

- Retardant_Avoidance_R06_EDW
- Incident Command Post
- Drop Point
- Camp
- Dip Site
- Helispot
- Division Break
- Value at Risk
- Landmark
- Gate
- Culvert
- Water Source
- Wildfire Daily Fire Perimeter
- Access or Improved Road
- Other
- Temporary Flight Restriction

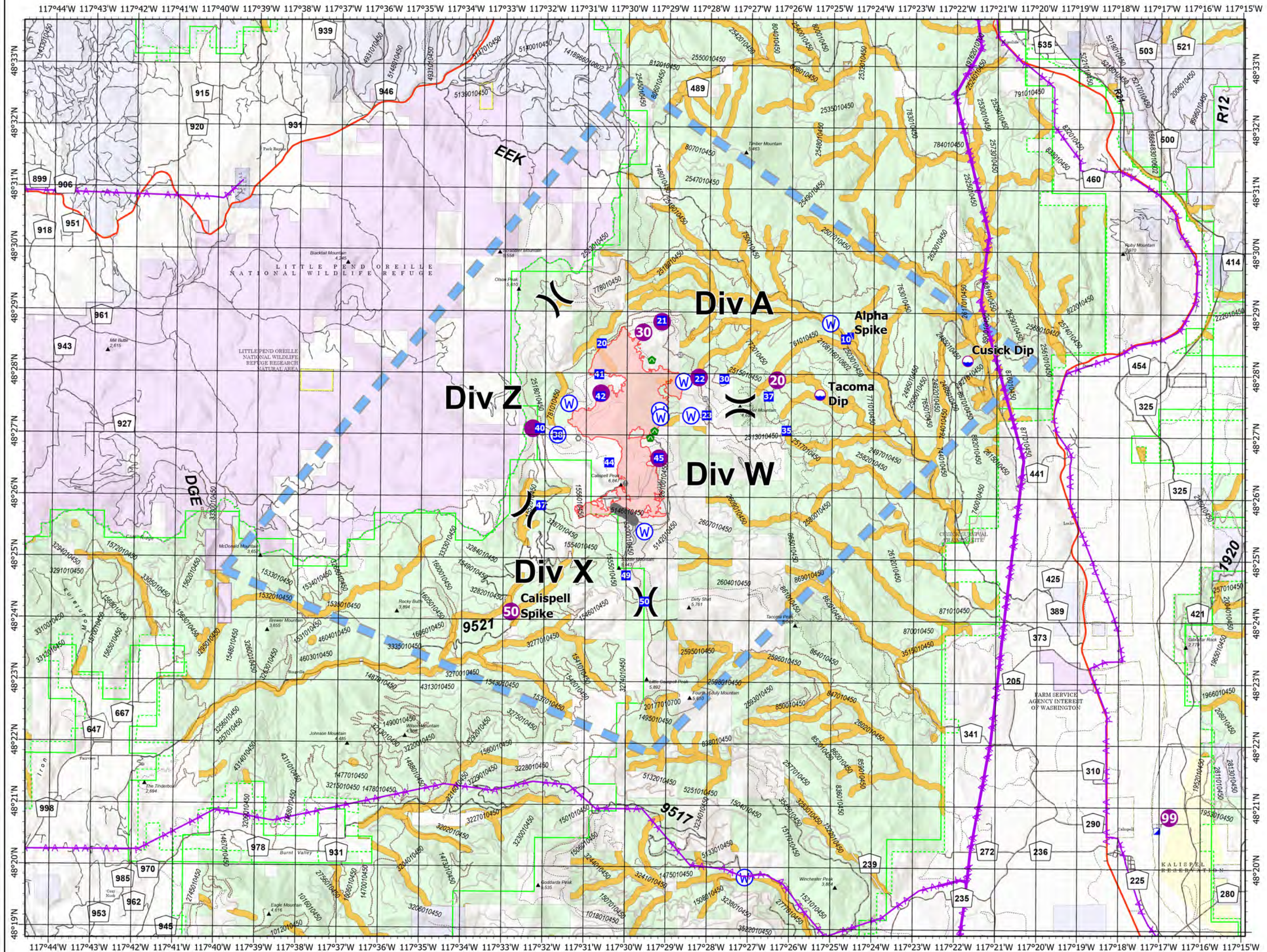


Team 7



0 0.5 1 2 3 Miles

9/11/2022 0442
North American 1983 Datum, Lat/Long Grid



FC Point Type	Label	Latitude	Longitude
Camp	Alpha Spike	48° 28.643'	117° 24.566'
Camp	Callispell Spike	48° 24.142'	117° 32.673'
Dip Site	Cusick Dip	48° 28.240'	117° 21.710'
Dip Site	Tacoma Dip	48° 27.680'	117° 25.300'
Drop Point	21	48° 28.872'	117° 29.163'
Drop Point	22	48° 27.941'	117° 28.247'
Drop Point	30	48° 27.932'	117° 27.633'
Drop Point	37	48° 27.652'	117° 26.552'
Drop Point	45	48° 26.643'	117° 29.218'
Drop Point	50	48° 24.316'	117° 29.545'
Drop Point	10	48° 28.585'	117° 24.680'
Drop Point	38	48° 27.011'	117° 31.692'
Drop Point	40	48° 27.118'	117° 32.129'
Drop Point	20	48° 28.500'	117° 30.636'
Drop Point	44	48° 26.569'	117° 30.434'
Drop Point	23	48° 27.342'	117° 28.058'
Drop Point	35	48° 27.101'	117° 26.111'
Drop Point	42	48° 27.657'	117° 30.656'
Drop Point	47	48° 25.867'	117° 32.087'
Drop Point	49	48° 24.739'	117° 30.003'
Drop Point	41	48° 27.998'	117° 30.690'
Helispot	45	48° 26.640'	117° 29.207'
Helispot	40	48° 27.114'	117° 32.297'
Helispot	50	48° 24.140'	117° 32.802'
Helispot	20	48° 27.917'	117° 26.347'
Helispot	30	48° 28.683'	117° 29.610'
Helispot	21	48° 28.855'	117° 29.158'
Helispot	99	48° 20.846'	117° 16.752'
Helispot	42	48° 27.690'	117° 30.643'
Helispot	22	48° 27.955'	117° 28.249'
Mobile Weather Unit	IRAWS23	48° 26.202'	117° 30.164'
Mobile Weather Unit	IRAWS24	48° 30.869'	117° 28.918'
Repeater		48° 26.215'	117° 30.147'
Water Source		48° 28.840'	117° 25.051'
Water Source		48° 27.888'	117° 28.622'
Water Source		48° 27.334'	117° 28.440'
Water Source		48° 27.523'	117° 31.420'
Water Source		48° 27.413'	117° 29.200'
Water Source		48° 27.308'	117° 29.176'
Water Source		48° 27.011'	117° 31.694'
Water Source		48° 25.451'	117° 29.556'
Water Source		48° 19.851'	117° 27.073'