

Ops - Division X

Boulder Mountain
WA-NES-001858

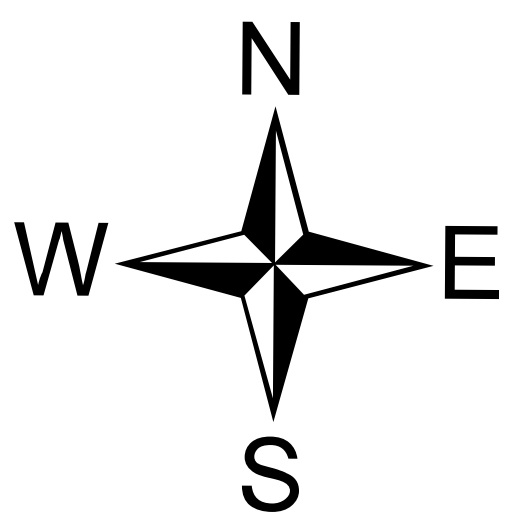
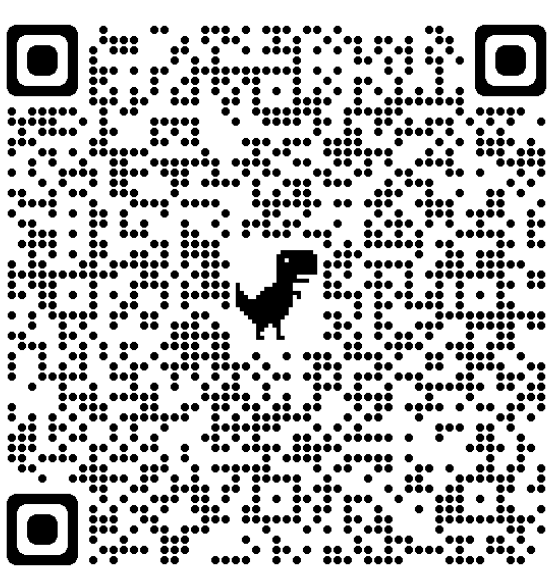
9/12/2022

2,175 acres
Acres from IR on 09/11/2022 2058

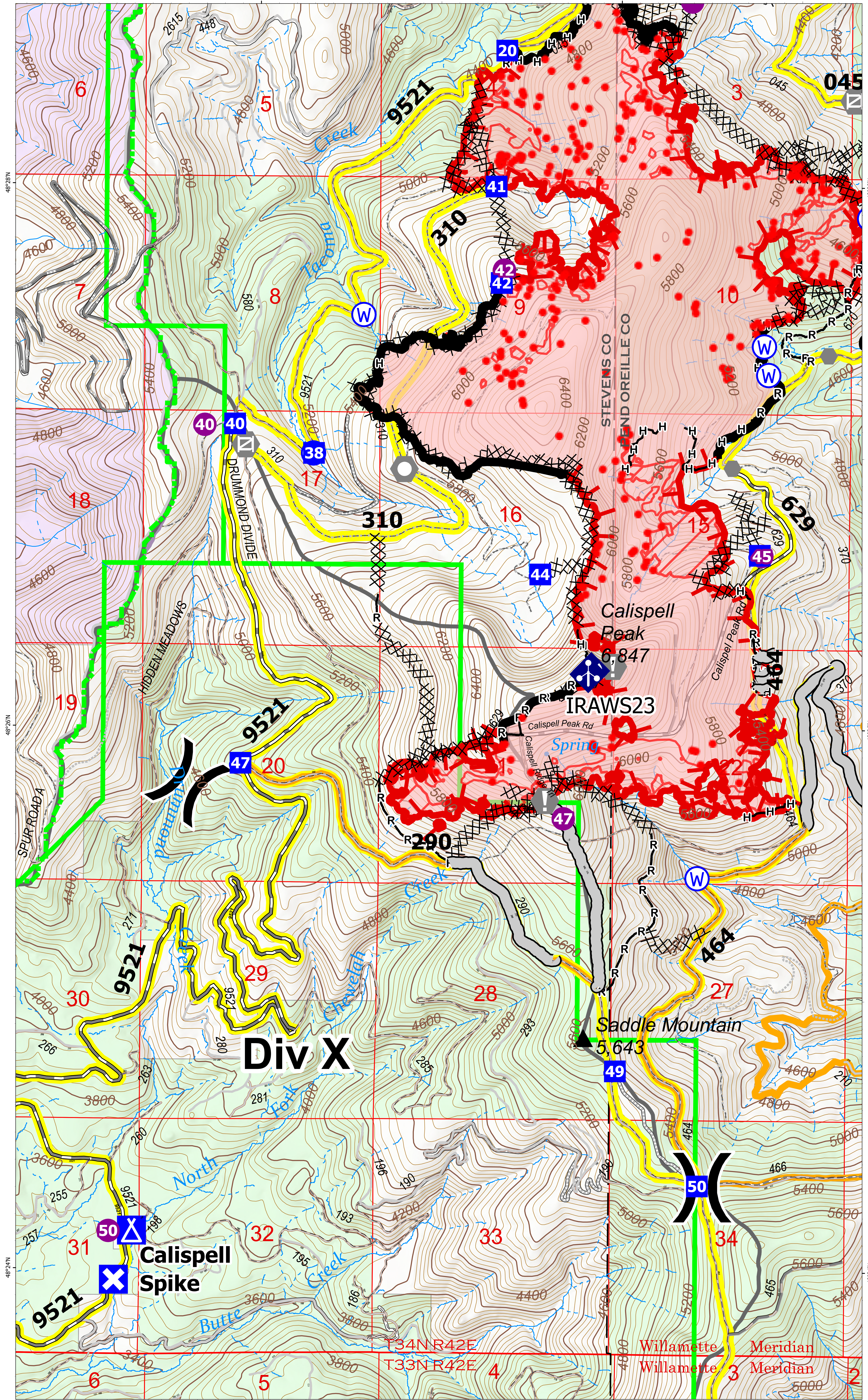
- Drop Point
- Closure
- Camp
- Helispot
- Division Break
- Value at Risk
- Other
- Landmark
- Gate
- Mobile Weather Unit
- Repeater
- Water Source
- IR Isolated Heat Source
- Completed Dozer Line
- Completed Hand Line
- Completed Road as Line
- Access or Improved Road
- Temporary Flight Restriction
- Stimson Road Brushing
- Contained
- Uncontained
- IR Heat Perimeter
- IR Intense Heat
- IR Scattered Heat
- Wildfire Daily Fire Perimeter
- Road - Closed
- Road - Light Duty - Dirt
- Road - Light Duty - Gravel
- Road - Light Duty - Unspecified Composition
- Road - Unimproved
- Forest Service Land
- U.S. Fish Wildlife Service Lands
- State Boundary Fill



Team 7



9/12/2022 0644
North American 1983 Datum, Lat,Long Grid



Div X

Calispell Spike

Calispell Peak
6,847

Saddle Mountain
5,643

IRAWS23

T34N R42E
T33N R42E

Willamette Meridian
Willamette 3 Meridian