

Air Ops

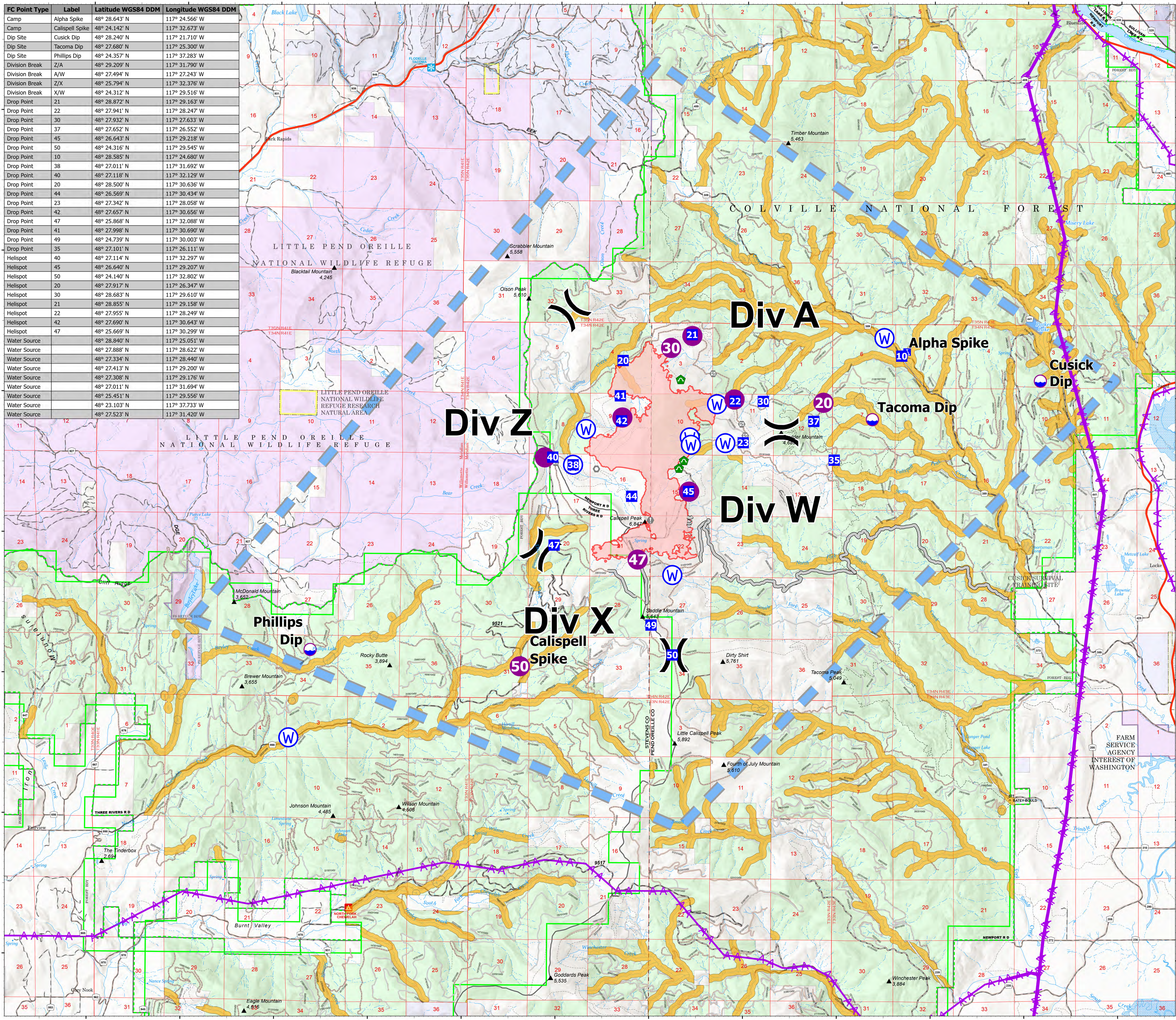
Boulder Mountain
WA-NES-001858

9/12/2022

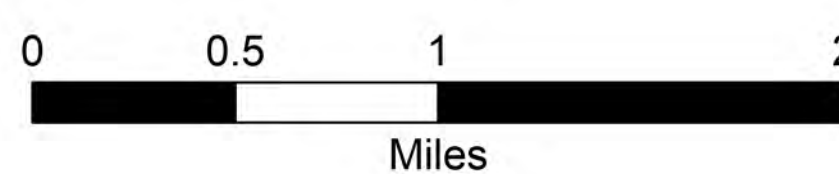
2,175 Acres

FC Point Type	Label	Latitude WGS84 DDM	Longitude WGS84 DDM
Camp	Alpha Spike	48° 28.643' N	117° 24.566' W
Camp	Calispell Spike	48° 24.142' N	117° 32.673' W
Dip Site	Cusick Dip	48° 28.240' N	117° 21.710' W
Dip Site	Tacoma Dip	48° 27.680' N	117° 25.300' W
Dip Site	Phillips Dip	48° 24.357' N	117° 37.283' W
Division Break	Z/A	48° 29.209' N	117° 31.790' W
Division Break	A/W	48° 27.494' N	117° 27.243' W
Division Break	Z/X	48° 25.794' N	117° 32.376' W
Division Break	X/W	48° 24.312' N	117° 29.516' W
Drop Point	21	48° 28.872' N	117° 29.163' W
Drop Point	22	48° 27.941' N	117° 28.247' W
Drop Point	30	48° 27.932' N	117° 27.633' W
Drop Point	37	48° 27.652' N	117° 26.552' W
Drop Point	45	48° 26.643' N	117° 29.218' W
Drop Point	50	48° 24.316' N	117° 29.545' W
Drop Point	10	48° 28.585' N	117° 24.680' W
Drop Point	38	48° 27.011' N	117° 31.692' W
Drop Point	40	48° 27.118' N	117° 32.129' W
Drop Point	20	48° 28.500' N	117° 30.636' W
Drop Point	44	48° 26.569' N	117° 30.434' W
Drop Point	23	48° 27.342' N	117° 28.058' W
Drop Point	42	48° 27.657' N	117° 30.656' W
Drop Point	47	48° 25.868' N	117° 32.088' W
Drop Point	41	48° 27.998' N	117° 30.690' W
Drop Point	49	48° 24.739' N	117° 30.003' W
Drop Point	35	48° 27.101' N	117° 29.610' W
Hellspot	40	48° 27.114' N	117° 32.297' W
Hellspot	45	48° 26.640' N	117° 29.207' W
Hellspot	50	48° 24.140' N	117° 32.802' W
Hellspot	20	48° 27.917' N	117° 26.347' W
Hellspot	30	48° 28.683' N	117° 29.610' W
Hellspot	21	48° 28.855' N	117° 29.158' W
Hellspot	22	48° 27.955' N	117° 28.249' W
Hellspot	42	48° 27.690' N	117° 30.643' W
Hellspot	47	48° 25.669' N	117° 30.299' W
Water Source		48° 28.840' N	117° 25.051' W
Water Source		48° 27.888' N	117° 28.622' W
Water Source		48° 27.334' N	117° 28.440' W
Water Source		48° 27.413' N	117° 29.200' W
Water Source		48° 27.308' N	117° 29.176' W
Water Source		48° 27.011' N	117° 31.694' W
Water Source		48° 25.451' N	117° 29.556' W
Water Source		48° 23.103' N	117° 37.733' W
Water Source		48° 27.523' N	117° 31.420' W

- Access or Improved Road
- Temporary Flight Restriction
- Wildfire Daily Fire Perimeter
- Highway
- Road - Closed
- Road - Light Duty - Dirt
- Road - Light Duty - Gravel
- Road - Light Duty - Paved
- Road - Light Duty - Unspecified Composition
- Road - Unimproved
- Trail
- Forest Service Land
- State Public Lands
- Other State Lands
- U.S. Fish Wildlife Service Lands



Team 7



9/12/2022 0341
North American 1983 Datum, Lat/Long Grid