

# Pilot Map

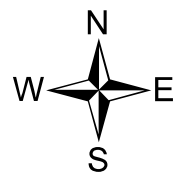
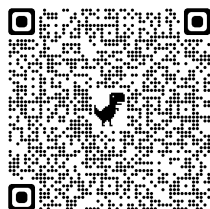
Boulder Mountain  
WA-NES-0001858

9/13/2022

- Retardant Avoidance\_R06\_EDW
- Incident Command Post
- Drop Point
- Camp
- Dip Site
- Helispot
- Division Break
- Value at Risk
- Landmark
- Gate
- Stream Crossing
- Culvert
- Water Source
- Wildfire Daily Fire Perimeter
- Completed Fuel Break
- Access or Improved Road
- Temporary Flight Restriction

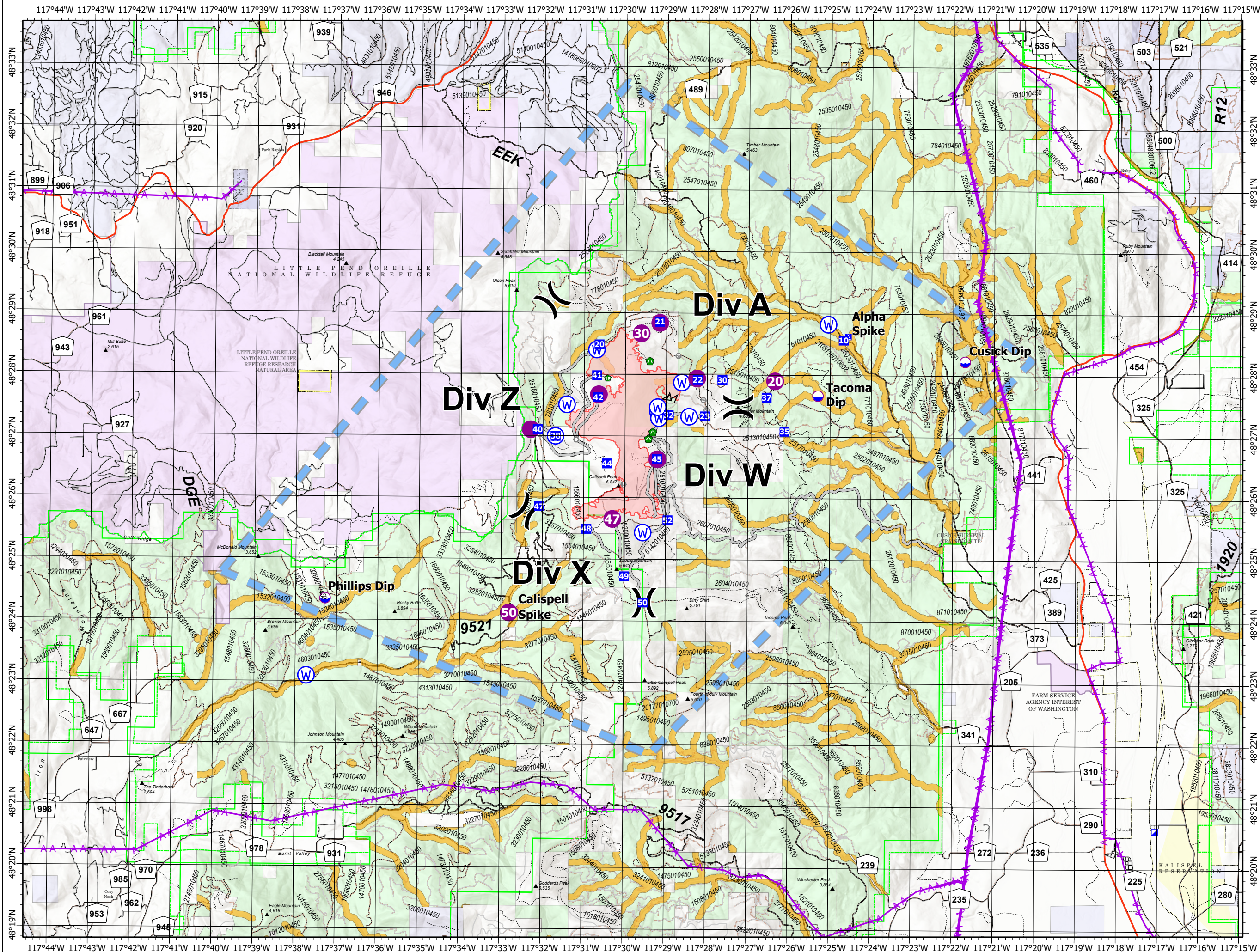


Team 7



0 0.5 1 2 3 Miles

9/12/2022 2112  
North American 1983 Datum, LatLong Grid



FC Point Type	Label	Latitude	Longitude
Camp	Alpha Spike	48° 28.643' N	117° 24.566' W
Camp	Calispell Spike	48° 24.142' N	117° 32.673' W
Dip Site	Cusick Dip	48° 28.240' N	117° 21.710' W
Dip Site	Tacoma Dip	48° 27.680' N	117° 25.300' W
Dip Site	Phillips Dip	48° 24.357' N	117° 37.283' W
Drop Point	21	48° 28.872' N	117° 29.163' W
Drop Point	22	48° 27.941' N	117° 28.247' W
Drop Point	30	48° 27.932' N	117° 27.633' W
Drop Point	37	48° 27.652' N	117° 26.552' W
Drop Point	45	48° 26.643' N	117° 29.218' W
Drop Point	50	48° 24.316' N	117° 29.545' W
Drop Point	10	48° 28.585' N	117° 24.680' W
Drop Point	38	48° 27.011' N	117° 31.692' W
Drop Point	40	48° 27.118' N	117° 32.129' W
Drop Point	20	48° 28.500' N	117° 30.636' W
Drop Point	44	48° 26.569' N	117° 30.434' W
Drop Point	23	48° 27.342' N	117° 28.059' W
Drop Point	42	48° 27.657' N	117° 30.656' W
Drop Point	47	48° 25.868' N	117° 32.088' W
Drop Point	41	48° 27.998' N	117° 30.690' W
Drop Point	49	48° 24.739' N	117° 30.003' W
Drop Point	52	48° 25.652' N	117° 28.952' W
Drop Point	32	48° 27.362' N	117° 28.939' W
Drop Point	35	48° 27.101' N	117° 26.111' W
Drop Point	48	48° 25.506' N	117° 30.928' W
Helispot	40	48° 27.114' N	117° 32.297' W
Helispot	45	48° 26.640' N	117° 29.207' W
Helispot	50	48° 24.140' N	117° 32.802' W
Helispot	20	48° 27.917' N	117° 26.347' W
Helispot	30	48° 28.683' N	117° 29.610' W
Helispot	21	48° 28.855' N	117° 29.158' W
Helispot	22	48° 27.955' N	117° 28.249' W
Helispot	42	48° 27.690' N	117° 30.643' W
Helispot	47	48° 25.669' N	117° 30.299' W
Mobile Weather Unit	IRAWS23	48° 26.202' N	117° 30.164' W
Mobile Weather Unit	IRAWS24	48° 30.869' N	117° 28.918' W
Repeater		48° 26.215' N	117° 30.147' W
Stream Crossing		48° 27.956' N	117° 30.428' W
Water Source		48° 28.840' N	117° 25.051' W
Water Source		48° 27.888' N	117° 28.622' W
Water Source		48° 27.334' N	117° 28.440' W
Water Source		48° 27.413' N	117° 29.201' W
Water Source		48° 27.308' N	117° 29.176' W
Water Source		48° 27.011' N	117° 31.694' W
Water Source		48° 25.451' N	117° 29.556' W
Water Source		48° 23.103' N	117° 37.733' W
Water Source		48° 27.523' N	117° 31.420' W
Water Source		48° 28.416' N	117° 30.700' W
Water Source		48° 27.488' N	117° 29.207' W