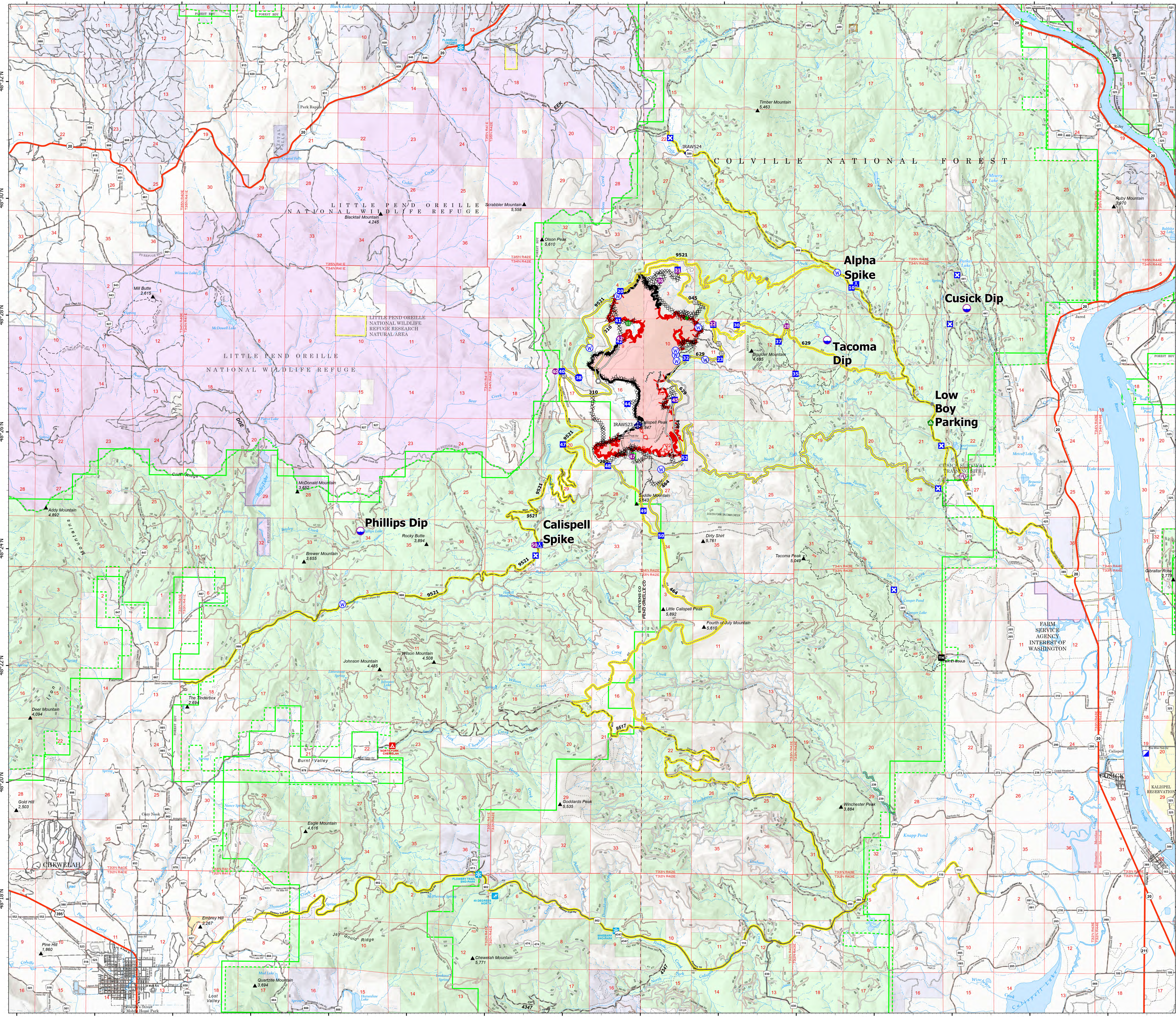


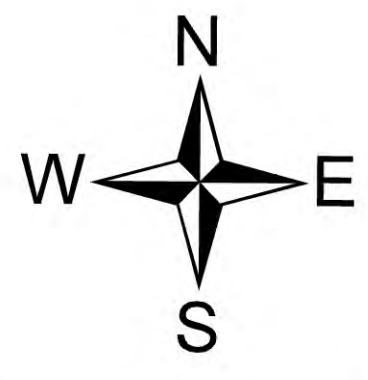
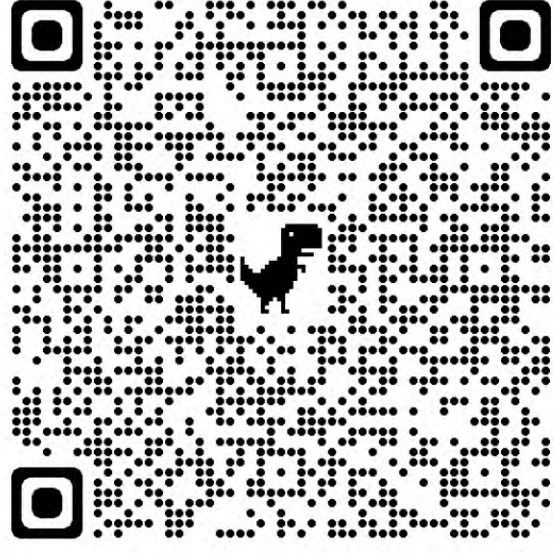
# Transportation

Boulder Mountain  
WA-NES-001858  
9/13/2022  
2,175 acres

- Incident Command Post
- Drop Point
- Closure
- Camp
- Dip Site
- Helispot
- Helibase
- Value at Risk
- Other
- Landmark
- Gate
- Stream Crossing
- Repair Point
- Landing or Log Deck
- Mobile Weather Unit
- Repeater
- Water Source
- Completed Dozer Line
- Completed Fuel Break
- Completed Hand Line
- Completed Road as Line
- Access or Improved Road
- Contained
- Uncontained
- Wildfire Daily Fire Perimeter
- Ferry
- Highway
- Road - Closed
- Road - Light Duty - Dirt
- Road - Light Duty - Gravel
- Road - Light Duty - Paved
- Road - Light Duty - Unspecified Composition
- Road - Unimproved
- Trail
- Forest Service Land
- State Public Lands
- Other State Lands
- U.S. Fish Wildlife Service Lands
- Bureau of Land Management Lands
- American Indian Land BLM
- State Boundary Fill



Team 7



9/12/2022 2138  
North American 1983 Datum, Lat/Long Grid